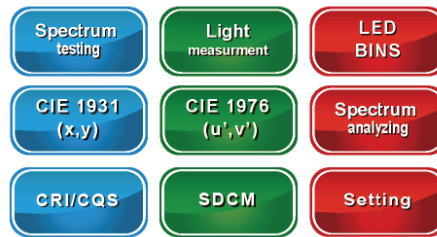


# Portable Lighting Measuring Equipment

**XT1600**



The XT1600 micro-spectrometer captures any visible light and immediately displays the full spectrum and all test data. The spectrometer features an intuitive touch panel interface and automated report generation.



XT1600

**If you need to measure:**

- > Lux – illumination value
- > Lumen – luminous flux
- > CRI – color rendering index according to CIE
- > CCT correlated color temperature
- > CRI/CQS – color rendering index/color quality scale
- > PPF – Photosynthetic Photon Flux Density, E<sub>μ</sub> MOL
- > COLOR – color coordinates according to CIE 1931 and CIE 1976

**Quality and Reliability**

Vitretek, founded in 1990, is the premier source of precision power testing and measuring equipment for industrial and consumer product development and manufacturing. Vitrek's sophisticated technology provides companies the edge in design verification and product manufacturability.

Resolution	4.2 – 5 nm FWHM
Spectral range	380 – 780 nm
Detector	Sony ILX563A CCD
Number of pixals	2048
Measurement range	1 – 200,000 lx
Integration time	1ms to 1 s
Signal – to – noise range	150:1
Spectral deviation	0.12%
Spectroradiometric accuracy	0.4%

Storage Media	1GB built-in Flash memory, optical Micro SD card 4GB
Power	Power lithium-ion battery 2600m Ah
Power consumption	~ 15W
Power supply	Input: AC 100-240V 50/60 Hz 0.1 A~0.2 A
Ambient temperature	-10 ~ 50° C
Dimensions	148.5(W) x 96(D) x 24(H) mm
Weight	550g/630g

**25**  
Years Industry  
EXPERTISE

**INDUSTRIES SERVED**

- Ballast/Driver Testing
- Lamp/LED Spot Testing
- Lighting Designers
- Fixture Verification
- Engineering Labs
- Field Tests

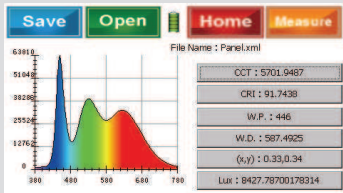
# XT1600

## Portable Lighting Measurement Equipment

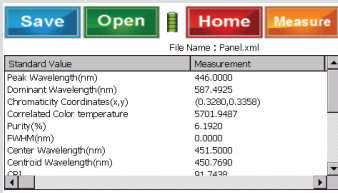
# Test Like You MEAN IT



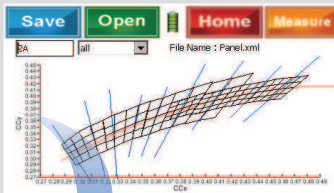
### 1. Spectrum Testing



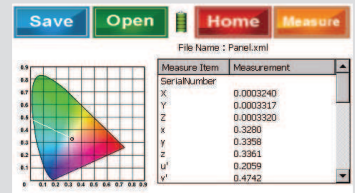
### 2. Light Measurement



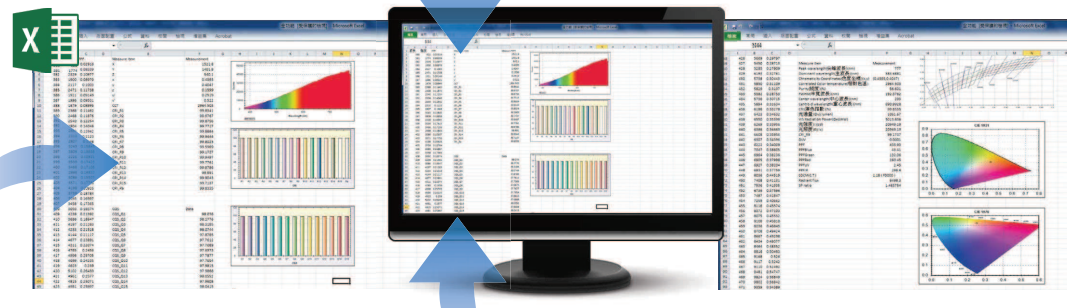
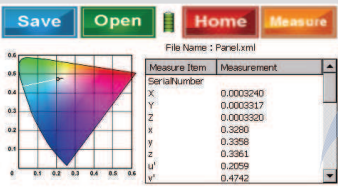
### 3. LED BINS



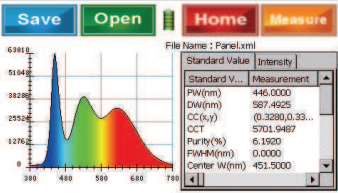
### 4. CIE 1931



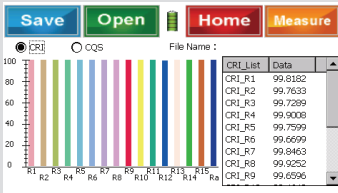
### 5. CIE 1976



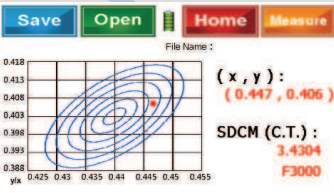
### 6. Spectrum Analyzing



### 7. CRI / CQS



### 8. SDCM



Vitrek  
12169 Kirkham Road  
Poway, CA 92164  
(858) 689-2755  
info@vitrek.com  
www.vitrek.com



## ORDERING INFORMATION

PART #	DESCRIPTION
822-XT1600	Portable micro-spectrometer

Please visit [www.vitrek.com](http://www.vitrek.com) for ordering information.