

DC POWER SUPPLY
72-7245
(MULTI-OUTPUT)

User Manual

8272-724501A0

www.valuetronics.com

Declaration of Conformity

◎ EMC

**EN 61326-1: Electrical equipment for measurement, control and laboratory use —
EMC requirements (1997+A1: 1998)**

| | |
|--|---|
| Conducted and Radiated Emissions EN 55011: 1998 | Electrostatic Discharge EN 61000-4-2: 1995+A1:1998 |
| Current Harmonic EN 61000-3-2: 1995+A1: 1998+A2: 1998 +A14: 2000 | Radiated Immunity EN 61000-4-3: 1996 |
| Voltage Fluctuation EN 61000-3-3: 1995 | Electrical Fast Transients EN 61000-4-4: 1995 |
| ----- | Surge Immunity EN 61000-4-5: 1995 |
| ----- | Conducted Susceptibility EN 61000-4-6: 1996 |
| ----- | Voltage Dips/ Interrupts EN 61000-4-11: 1994 |

◎ Safety

Low Voltage Equipment Directive 73/23/EEC & amended by 93/68/EEC

EN 61010-1 : 2001

IEC 61010-1: 2001

| SECTION | PAGE |
|--|------|
| 1. INTRODUCTION..... | 1 |
| 2. SPECIFICATIONS..... | 2 |
| 2-1 General..... | 2 |
| 2-2 Operation Mode..... | 2 |
| 2-3 Constant Voltage Operation..... | 2 |
| 2-4 Constant Current Operation..... | 3 |
| 2-5 Tracking Mode..... | 3 |
| 2-6 Meter..... | 3 |
| 2-7 Insulation..... | 3 |
| 3. THEORY OF OPERATION..... | 4 |
| 4. PANEL CONTROLS AND INDICATORS..... | 6 |
| 4-1 Front Panel..... | 8 |
| 4-2 Rear Panel..... | 10 |
| 5. OPERATION INSTRUCTION..... | 11 |
| 5-1 Precaution..... | 11 |
| 5-2 Setting Current Limit..... | 11 |
| 5-3 Constant Voltage/ Constant Current Characteristic..... | 12 |
| 5-4 Operation Mode..... | 13 |
| 6. MAINTENANCE..... | 18 |
| 6-1 Fuse Replacement..... | 18 |
| 6-2 Line Voltage Conversion..... | 18 |
| 6-3 Adjustments..... | 19 |
| 6-4 Cleaning..... | 21 |
| 6-5. Service, Repair and Calibration | 21 |

SAFETY TERMS AND SYMBOLS

Please take a moment to review these safety terms and symbols which may appear in this manual or on Equipment to prevent damage to the Function Generators.



WARNING. Warning statements identify condition or practices that could result in injury or loss of life.



CAUTION. Caution statements identify conditions or practices that could result in damage to this product or other property.



DANGER High Voltage



ATTENTION refer to Manual



Protective Conductor Terminal



(ground) Earth Terminal



Frame or Chassis Terminal

FOR UNITED KINGDOM ONLY

NOTE: This lead/appliance must only be wired by competent persons.


WARNING: THIS APPLIANCE MUST BE EARTHED

IMPORTANT: The wires in this lead are coloured in accordance with the following code:

Green/ Yellow: Earth
Blue: Neutral
Brown: Live(Phase)



As the colours of the wires in main leads may not correspond with the colours marking identified in your plug/appliance, proceed as follows:

The wire which is coloured Green & Yellow must be connected to the Earth terminal marked with the letter E or by the earth symbol  or coloured Green or Green & Yellow.

The wire which is coloured Blue must be connected to the terminal which is marked with the letter N or coloured Blue or Black.

The wire which is coloured Brown must be connected to the terminal marked with the letter L or P or coloured Brown or Red.

If in doubt, consult the instructions provided with the equipment or contact the supplier.

This cable/appliance should be protected by a suitably rated and approved HBC mains fuse : refer to the rating information on the equipment and/or user instructions for details. As a guide, cable of 0.75mm² should be protected by a 3A or 5A fuse. Larger conductors would normally require 13A types, depending on the connection method used.

Any moulded mains connector that requires removal / replacement must be destroyed by removal of any fuse & fuse carrier and disposed of immediately, as a

www.valuetronics.com in live socket. Any re-wiring must be carried out in accordance with the information detailed on this label.

1. INTRODUCTION

The regulated DC power supply series is designed to be used in applications such as powering operational amplifier, push-pull stages, logic circuit and definition systems where plus and minus voltages are required to track with an insignificant error. To represent an operation convenience, 72-7245 is two independent power supplies housed in a single package.

72-7245 consists of two identical, independent, adjustable DC power supplies. A front panel switch selects one of three operation modes of independent, series and parallel. In the independent mode, the output voltage and current of each supply are controlled separately, and each supply is isolated up to 300V from output to chassis or output to output. In the tracking mode, both outputs are automatically connected in series or parallel, and the controls of the left supply adjust the magnitudes of both the positive and negative output voltages. Because the outputs are connected in a tracking configuration, any internal disturbance in the master supply (such as drift or ripple) will cause an equal percentage change in the outputs of both the supplies.

Both power supplies are completely transistorized, well-regulated, constant voltage/constant current supplies that will provide full rated output voltage at the maximum output current or can be continuously adjusted throughout the output range. The front panel current controls can be used to establish the output current limit (overload or short circuit) when the supply is used as a constant voltage source (independent or tracking modes) and the voltage controls can be used to establish the voltage limit (ceiling) when the supply is used as a constant current source (independent mode only). The supply will automatically cross over from constant voltage to constant current operation (current limited operation in the tracking mode). Each power supply (CH1-CH2) has its own front panel meter that can measure output voltage or current. One power supply may be used as a CH1 supply controlling, and CH2 may be used for furnishing various voltages or currents for a system. When operated with the front panel mode switch in the tracking position, the instrument is automatically internally connected in auto-tracking configuration.

For audio production line, the continuous or dynamic load can be internally selected. When the connector (J111&J309) is connected to "ON" position the unit is suitable for audio power Amplifier application (Normal setting to "OFF" position).

2. SPECIFICATIONS

2-1. General

| | |
|---------------------------------|--|
| Main Supply (switch selectable) | : 100V/120V/220V $\pm 10\%$ (230V $+10\% \sim -6\%$) 50/60Hz. |
| Operation Environment | : Indoor use. Altitude up to 2000m. Ambient temperature 0°C to 40°C. Relative humidity 80% (maximum). Installation category II. Pollution degree 2. |
| Storage Temperature & Humidity | : -10°C to 70°C, 70% (maximum). |
| Accessories | : Operation Manual x1. |

Table 2-1:

| MODEL | TRACKING | | | REPLACED FUSE TYPE | | RATES INPUT | | TEST LEAD | |
|---------|--------------------|-----------|-----------|--------------------|-------------|-------------|-----|-----------|---------|
| | Independent | Series | Para | 100V/120V | 220V/230V | WATTS | VA | GTL-104 | GTL-105 |
| 72-7245 | 0~30Vx2 0~3A x2 | 60V 3A | 30V 6A | T6A 250V | T3A 250V | 350 | 450 | 2 | 0 |

| | |
|-------------|-----------------------------|
| Dimensions | : 255(W) x145(H) x265(D) mm |
| Weight (kg) | : 7.0 kg. |

2-2. Operation Mode

- (1) Independent : Two independent outputs and
Output from 0 to rating volts and 0 to rating amperes.
- (2) Series : Output from 0 to rating volts at rating amperes each.
: Output from 0 to double rating volts at rating amperes.
- (3) Parallel : Output from 0 to double rating amperes at rating volts.

2-3. Constant Voltage Operation

- (1) Output voltage range : 0 to rating voltage continuously adjustable.
- (2) Regulation : Line regulation $\leq 0.01\% + 3\text{mV}$.
: Load regulation $\leq 0.01\% + 3\text{mV}$ (rating current $\leq 3\text{A}$).
: Load regulation $\leq 0.02\% + 5\text{mV}$ (rating current $> 3\text{A}$).
: $\leq 100 \mu\text{s}$ (50% load change, minimum load 0.5A).
: $\leq 1\text{mVrms}$ (5Hz-1MHz).
: $\leq 300\text{ppm}/^\circ\text{C}$.
- (3) Recovery time
- (4) Ripple & Noise
- (5) Temperature coefficient

2-4. Constant Current Operation

- (1) Output current range : 0 to rating current continuously adjustable.
- (2) Regulation : Line regulation $\leq 0.2\% + 3\text{mA}$.
: Load regulation $\leq 0.2\% + 3\text{mA}$.
- (3) Ripple current : $\leq 3\text{mA}_{\text{rms}}$.

2-5. Tracing Operation

- (1) Parallel Operation
Regulation : Line regulation $\leq 0.01\% + 3\text{mV}$.
: Load regulation $\leq 0.01\% + 3\text{mV}$ (rating current $\leq 3\text{A}$).
 $\leq 0.02\% + 5\text{mV}$ (rating current $> 3\text{A}$).
- (2) Series Operation
Regulation : Line regulation $\leq 0.01\% + 5\text{mV}$.
: Load regulation $\leq 300\text{mV}$.
- A. Positive and Negative supply (Fig 5-4) CH2 tracking error $\leq 0.5\% + 10\text{mV}$ of t
CH1 (No load, with load add load regulation $\leq 300\text{mV}$)
- B. Single supply (Fig. 5-3)

2-6. Meter

- A. Display A : 3 digits panel meter x2 (0.5" Red LED display).
Display V : 3 digits panel meter x 2 (0.5" Green LED display).
- B. Accuracy : OUT ON $\pm (0.5\% \text{ of rdg} + 2 \text{ digits})$
- C. Voltmeter : 99.9V of full scale.
- D. Ammeter : 9.99A of full scale.

2-7. Insulation

- Between chassis and output terminal : $20\text{M}\Omega$ or above (DC 500V).
- Between chassis and AC cord : $30\text{M}\Omega$ or above (DC 500V).

3. THEORY OF OPERATION

The power supply consists of an AC input circuit and transformer; a bias supply consisting of an rectifier, filter, pre-regulator and reference voltage source; a main regulator circuit consisting of the main rectifier and filter, a series regulator, a current comparator, a voltage comparator, a reference voltage amplifier and a relay control circuit. The circuit element consists of integrated circuit U101, U102, U103, U104, U105, U108.

The circuit arrangement is shown as block diagram in Fig. 3-1. The circuitry is discussed with reference to the block diagram function description. Single phase input power is applied to transformer through the input circuit.

Auxiliary rectifier D1021-1024 provides a bias voltage, filtered by capacitor C103, C104 for the preregulator. U101, U108 that provides a regulator voltage for elements of action.

The main rectifier, a full wave bridge rectifier provides the power which is filtered by capacitor, C1021 and then regulated via a series regulator and delivers to the output.

U105 acts as a current limiter. When current is over predetermined rating it is activated and decreases the current.

U102 provides a reference voltage for U103, U105. U103 is an inverter amplifier. U104 is a comparator amplifier which compares reference voltage and feedback voltage, and then delivers to Q103, Q104, which then calibrates the output voltage.

Q113 is activated when the unit is overload. It controls Q103 current magnitude which limits the output current.

The relay control circuit provides limited power dissipation in series regulator.

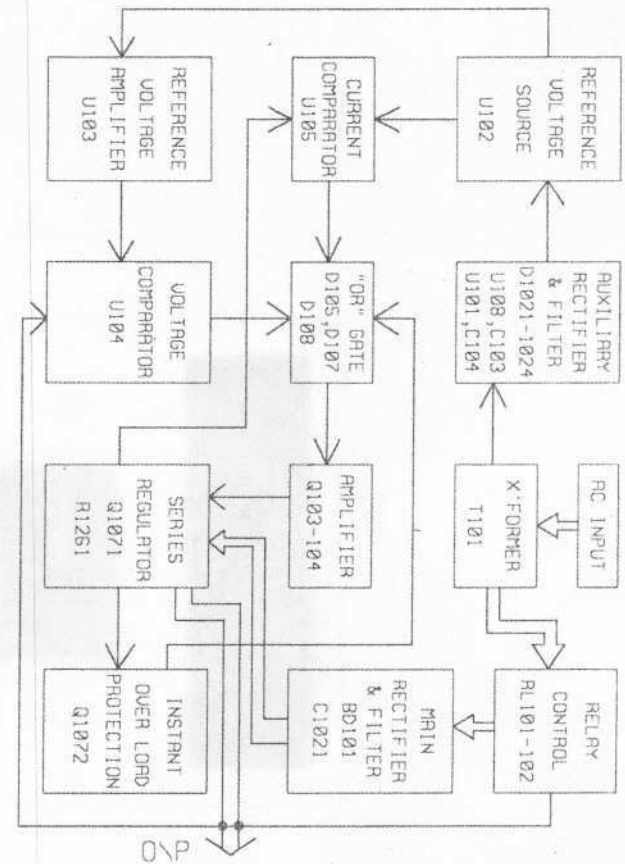


Figure 3-1 Block Diagram

4. PANEL CONTROLS AND INDICATORS

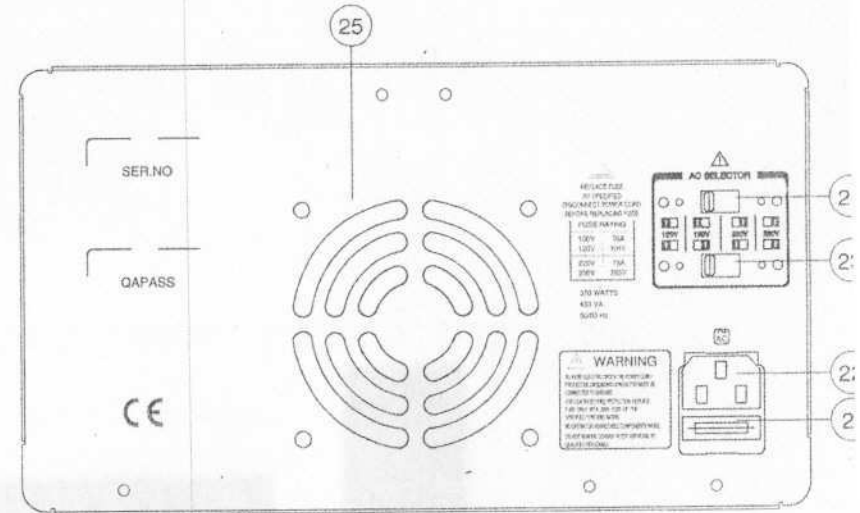
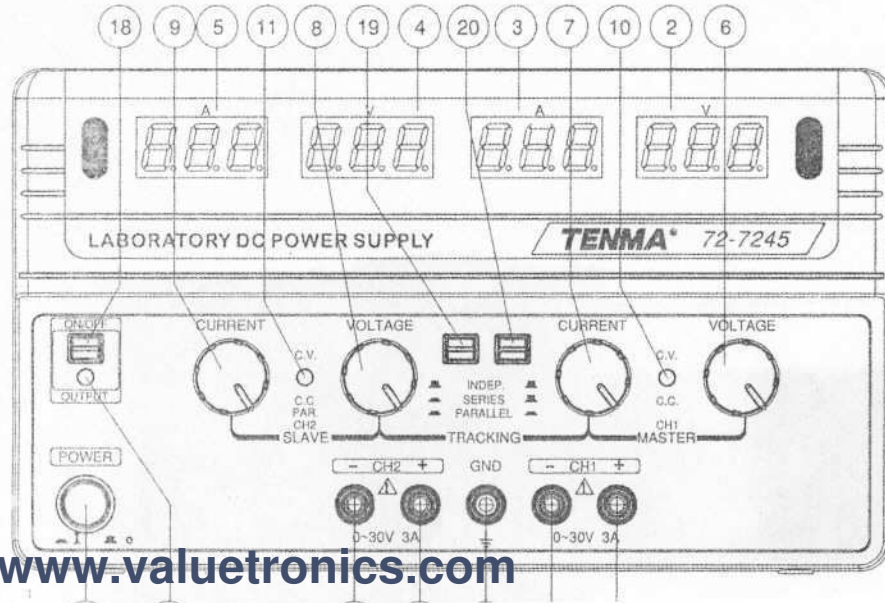


Fig. 4-2 Rear Panel

4-1. Front Panel

- (1) Power switch : ON/OFF the power input.
- (2) Meter V : Indicated the CH1 output voltage.
- (3) Meter A : Indicates the CH1 output current.
- (4) Meter V : Indicates the CH2 output voltage.
- (5) Meter A : Indicates the CH2 output current.
- (6) Voltage Control : Adjust the output voltage of the CH1 supply, and as the adjustment control for the maximum output voltage of the CH2 supply when either parallel or series tracking operation.
- (7) Current Control : Adjust the output current of the CH1 supply, and as the adjustment control for the maximum output current of the CH2 supply when either parallel or series tracking operation.
- (8) Voltage Control : Adjust the output voltage of the CH2 supply when in independent operation.
- (9) Current Control : Adjust the output current of the CH2 supply.
- (10) CV&CC Indicator : The CV light (green light) is on when the CH1 supply is in the constant voltage operation, or when both the CH1 and CH2 supplies are in the constant voltage operation in either series or parallel tracking mode.
The CC light (red light) is on when the CH1 supply is in the constant current operation.
- (11) CV&CC Indicator : The CV light (green light) is on when the CH2 supply is in the constant voltage operation.
The CC light (red light) is on when the CH2 supply is in the constant current operation or in parallel tracking mode.
- (12) Output Indicator : Switch the light on.

- (13) + output terminal : Positive polarity output terminal for the CH1 supply.
- (14) - output terminal : Negative polarity output terminal for the CH1 supply.
- (15) GND terminal : Earth and chassis ground.
- (16) + output terminal : Positive polarity output terminal for the CH2 supply.
- (17) - output terminal : Negative polarity output terminal for the CH2 supply.
- (18) Output switches : ON/OFF the output.
- (19) TRACKING & Mode Switch : Two push-button switches that select Independent mode, series tracking mode, or parallel tracking mode as follows:
- (20)
 - a. When both switches are disengaged (out), the unit is in the Independent mode and the CH1 and CH2 power supplies are completely independent from each other.
 - b. When the left switch is engaged (in) and the right switch is disengaged (out), the unit is in the Tracking series mode, maximum voltage of both supplies is set using the CH1 VOLTAGE controls (voltage at output terminals of the CH2 supply tracks the voltage at the output terminals of the CH1 SUPPLY). Also, in this mode of operation, the positive terminal (Red) of the CH2 supply is connected to the negative terminal (Black) of the CH1 supply to allow the two supplies to be used as a 0 to double rating voltage supply.
 - c. When both switches are engaged (in), the unit is in the Tracking Parallel mode, the CH1 and CH2 supplies are wired together in parallel and both the maximum current and voltage are set using the CH1 controls. The CH1 and CH2 output can be used as two individual (but tracking) power supplies or just the CH1 output can be used as a 0 to rating voltage supply with a 0 to double rating current capability.

4-2. Rear Panel

- (21) Fuse holder
- (22) Power socket
- (23) AC selects switch : Selects to permit operation from 100, 120, 220 or 230VAC, 50/60Hz line voltage by using (24) HI-LO switch.
- (24) HI-LO switch : HI position selects high voltage range (120, 230V AC inputs), LO position selects low voltage range (100, 220V AC inputs).
- (25) Cooling Fan : Ventilates the hot air out, to prevent output stage from thermo shock, and improves the temperature coefficient.

5. OPERATION INSTRUCTION

5-1. Precaution

(1) AC input

AC input should be within the range of line voltage $\pm 10\%$ (230V $+10\% \sim -6\%$) 50/60Hz.



WARNING. To avoid electrical shock, the power cord protective grounding conductor must be connected to ground.

AVERTISS: Pour éviter les chocs électriques, le fil de terre du cordon secteur doit impérativement être relié à la terre.

(2) Installation

Avoid using the supply in a place where ambient temperature exceeds 40°C. The heat sink located at the rear of the supply must have sufficient air space for radiation.



CAUTION. To avoid damaging the power supply, don't use it in a place where ambient temperature exceeds 40°C.

(3) Output voltage overshoot

Voltage between output terminals never exceeds the preset value when the power is turned on or off.

5-2. Setting Current Limit

- (1) Determine the maximum safe current for the device to be powered.
- (2) Temporarily short the (+) and (-) terminals of the power supply together with a test lead.
- (3) Rotate the VOLTAGE control away from zero sufficiently for the CC indicator to light.
- (4) Set the meter selection switch to "A" position to select the current metering mode.
- (5) Adjust the CURRENT control for the desired current limit. Read the current value on the Ammeter.
- (6) The current limit (overload protection) has now been preset. Do not change the CURRENT control setting after this step.
- (7) Remove the short between the (+) and (-) terminals and hook up for constant voltage operation.

5-3. Constant Voltage/Constant Current Characteristics

The working characteristic of these series Power Supplies is called a constant voltage/constant current automatic crossover type. This permits continuous transition from constant current to constant voltage modes in response to the load change. The intersection of constant voltage and constant current modes is called the crossover point. Fig. 5-1 shows the relationship between this crossover point and the load.

For example, if the load is such that the power supply is operating in the constant voltage mode, a regulated output voltage is provided. The output voltage remains constant as the load increases, up until the point where the present current limit is reached. At that point, the output current becomes constant and the output voltage drops in proportion to further increases in load. The point is indicated by the front panel LED indicators. The crossover point is reached when the CV indicator goes off and the CC indicator comes on.

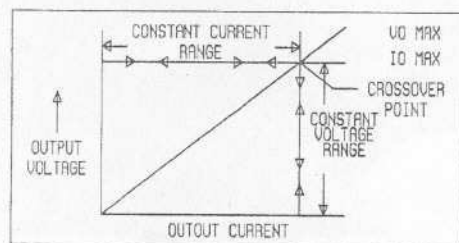


Fig. 5-1 Constant Voltage/Constant Current Characteristic

Similarly, crossover from the constant current to the constant voltage mode automatically occurs from a decrease in load. A good example of this would be seen when charging a 12 volt battery. Initially, the open circuit voltage of the power supply may be preset for 13.8 volts. A low battery will place a heavy load on the supply and it will operate in the constant current mode, which may be adjusted for a 1 amp charging rate. As the battery becomes charged, and its voltage approaches 13.8 volts, its load decreases to the point where the output voltage reaches the 13.8 volt preset value. This is the

crossover point where the power supply goes into the constant voltage mode.

5-4. Operation Mode

(1) Independent Operation

The "CH1" and "CH2" supplies each provide a 0 to rating volts output at up to rating amps. This procedure covers the use of the CH1 and CH2 supplies only when they are used independently from each other. When used in the independent operating mode, the operation controls of the two power supplies are completely independent and either supply can be used individually or both can be used simultaneously.

- Disengage both Tracking mode switches (both switches out) so that the power supply is in the independent operating mode.
- Adjust "Voltage" control and "Current" control to the desired output voltage and current.
- Turn off the power supply and the equipment to be powered during hook-up.
- Connect the positive polarity of the device being powered to the red (+) terminal of the power supply.
- Connect the negative polarity of the device being powered to the black (-) terminal of the power supply.
- Fig. 5-2 illustrates the connection procedure.

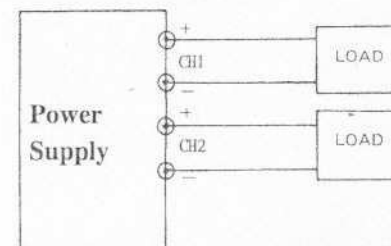


Fig. 5-2 Independent Operation

(2) Series Tracking Operation

When the series tracking mode of operation is selected, the position (Red) terminal of the CH2 supply output is internally connected to the negative (black) terminal of the CH1 supply.

In the series tracking mode, the maximum output voltage of both CH1 and CH2 supplies can be simultaneously varied with one control. The maximum CH2 supply voltage is automatically set to the same as the CH1 supply by using the CH1 VOLTAGE controls.

- A. Set the power supplies to the Tracking series mode by engaging the left Tracking switch and release the right Tracking switch.



WARNING. Voltage more than 60V DC has a lethal shock hazard to the user. Be careful when connecting power supplies in series to achieve voltages higher than 60V DC total or 60V DC between any connection and earth ground.

Note:

Simultaneously metering of both current and voltage can be obtained in the mode of operation setting one of the displays for current metering and one for voltage metering. In this case, the output voltage (across the two supplies) is actually double the displayed value. For example, if the CH1 display is set for voltage metering and the CH2 display for current metering, the output voltage across the CH1 positive (red) terminal and the CH2 negative (black) terminal would be double the reading on the CH1 LED Display (since both supplies are putting out the same voltage). The actual output current would be the value read from the CH2 LED Display (since the two supplies are wired in series, current flowing through each supply must be equal).

- B. Set the CH2 CURRENT control to the full clockwise position. The maximum current is set by using the CH1 CURREN control. Follow the instructions for "Setting current Limit" (select "CH1" or "CH2" supply independently by using the CH1 CURRENT control).

Note:

Because the supplies are being used in series, either CURRENT control can be used to set maximum current. If desired, the CH1 CURRENT control can

be used to set maximum current. If desired, the CH2 CURRENT control can be used to

adjust the maximum current value. Because current through the two supplies must be equal when they are being used in series, the lowest CURRENT control setting will set the maximum output current.

- C. Adjust the output voltage to the desired level by using the CH1 VOLTAGE controls.
- D. Turn off the power supply and the equipment to be powered during hook-up.
- E. If "single supply" operation is desired, this allows the power supply to be used as twice the voltage and rating current simply by using the negative (black) terminal of the CH2 supply and the positive (red) terminal of the CH1 supply, the configuration as shown in Fig. 5-3.

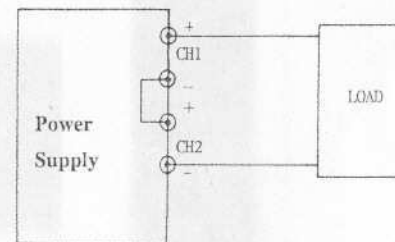


Fig. 5-3 Single Supply

- F. If the chassis or common of the equipment being powered is separated from both the positive and negative polarity power inputs, the output of the CH2 (negative) supply tracking the output of the CH1 (positive) supply, the configuration as shown in Fig. 5-4.

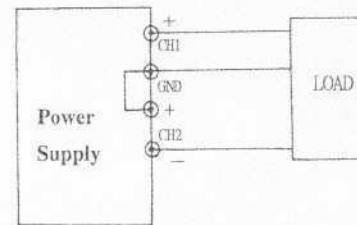


Fig. 5-4 Positive and Negative Supply

(3) Parallel Tracking Operation

In the parallel tracking mode of operation, both supplies are strapped together (in parallel). This allows for a rating voltage supply with a double rating current capability. Only the CH1 output terminals are used for parallel tracking operation. In the parallel tracking mode, the CH2 supply output voltage and current track the CH1 supply output voltage and current.

A. Set the power supplies to the Tracking Parallel mode by engaging both Tracking switches.

B. Output voltage will now be read from the CH1 VOLTAGE display. Output current is exactly double the value read from the CH1 CURRENT display (because each supply is providing the same amount of current).

C. Because both voltage and current of the CH2 supply track the CH1 supply, the maximum current and voltage are set by using the CH1 controls. Using the CH1 supply output jacks, follow the instructions for "Setting Current Limit" (5-2 Section). Remember that the actual current output at the CH1 supply output jack is double the reading on the CH2 indicator meter.

D. Adjust the output voltage to the desired level by using the CH1 VOLTAGE controls.

E. Turn off the power supply and the equipment to be powered during hook-up.

F. Connect the positive polarity of the device being powered to the red (+) terminal of the CH1 power supply.

G. Connect the negative polarity of the device being powered to the black (-) terminal of the CH1 power supply. The configuration is shown as Fig. 5-5:

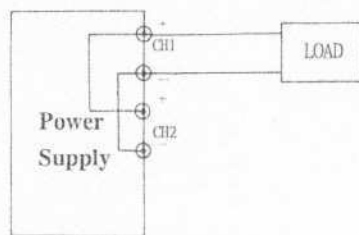


Fig. 5-5 Parallel Tracking Operation

(4) Dynamic Load Operation & Application

A. When select to dynamic load position, the max peak current is at 1.7 times rating current. The features are only applied for audio circuit of amplifier and audio production lines. Change the position of wafer J111 of CH1 and J309 of CH2 from "OFF" to "ON". Please refer to Fig.6-1 Adjustment Location.

B. For other application and testing (Safety or CE. etc.), must set the wafer at "OFF" position

(5) Output ON/OFF Action

The output ON/OFF action is controlled with a single control, the output switch is pushed on, a high single output is on and output LED is on, while the output switch is pushed off, or tracking switch is pressed, output will disable.



CAUTION: The output terminals are for use only with the equipment which has no accessible live parts. The output terminals should not be connected to any hazardous live parts.

(6) Fan Control

- 1) The fan of the power supply will not work upon power on until the temperature of the heat sink rises up to $32^{\circ}\text{C} \pm 5^{\circ}\text{C}$ after adding load to output terminal. The more the temperature of the heat sink rises, the more the rolling speed of the fan gets fast. The fastest rolling speed is when the temperature reaches to 70°C .
- 2) To avoid damaging the power supply, if the fan fails to work when the temperature reached to the appropriate value, turn off the instrument and check the cause.

6. MAINTENANCE

WARNING

The following instructions are for use by qualified personnel only. To avoid electrical shock, do not perform any servicing other than the operation instruction of the manual unless you are qualified to do so.

6-1. Fuse Replacement

If the fuse blows, the CV or CC indicators will not light and the power supply will not operate. The fuse should not normally open unless a problem has developed in the unit. Try to determine and correct the cause of the blown fuse, then replace only with a fuse of the correct rating and type. The fuse is located on the rear panel (see Fig.4-2 & Table 2-1).



WARNING: For continued fire protection, replace fuse only with 250V fuse of the specified type and rating, and disconnect power cord before replacing fuse.

AVERTISS: Pour une protection contre les risques d'incendie, remplacer le fusible exclusivement par un modèle aux caractéristiques équivalentes.

6-2. Line Voltage Conversion

The primary winding of the power transformer is tapped to permit operation from 100, 120, 220, or 230VAC, 50/60Hz line voltage. Conversion from one line voltage to another is done by change AC selects switch as shown in Fig. 4-2.

The rear panel identifies the line voltage to which the unit was factory set. To convert to a different line voltage, perform the following procedure:

- (1) Make sure the power cord is unplugged.
- (2) Change the AC selects switch to the desired line voltage position.
- (3) A change in line voltage may also require a corresponding change of fuse value. Install the correct fuse value as listed on rear panel.

6-3. Adjustments

This unit was accurately adjusted at the factory before shipment. Readjustment is recommended only if repairs have been made in a circuit affecting adjustment accuracy or if you have a reason to believe the unit is out of adjustment. The recommended calibration device is a multimeter with an accuracy of $\pm 0.1\%$ DCV or better.

If readjustment is required, use the following procedure. The location of the adjustments is shown in Fig. 6-1.

(1) Independent Adjustment

- A. Disengage both Tracking mode switches (both switches out) so that the power supply is in the independent operating mode.
- B. Connect a 4-1/2 digital multimeter with an accuracy of $\pm 0.1\%$ DCV to measure the DC voltage at the output terminals of the CH1 (CH2) supply.
- C. Set the CH1 (CH2) VOLTAGE control to maximum (fully clockwise).
- D. Adjust trimmer potentiometer (VR101 CH1, VR301 CH2) on the circuit board (located on the right side of the supply) for a reading as close to rating voltage $\times 1.05$ (on the multimeter) as possible.
- E. Set output on by adjusting the trimmer potentiometer (VR801 CH2, VR201 CH1) from the CH1 (CH2) voltage indicator circuit board (located on the meter or A/D converter board) for a reading of rate voltage $\times 1.05$ on the CH1 (CH2).
- F. Connect the external multimeter across the CH1 (CH2) SUPPLY output terminals to read the output current (so that the meter causes a short circuit across the terminals) and adjust the CH1 (CH2) CURRENT control so that rating amps is read on the multimeter.
- G. Set output on by adjusting the trimmer potentiometer (VR901 CH2, VR701 CH1) so that the CH1(CH2) meter also reads rating amps.
- H. Rotate the CH1(CH2) current control fully clockwise (maximum).
- I. Adjust VR103 on the CH1 (VR303 CH2) supply circuit board (located on the right side of the supply) to obtain an output current of rating amps $\times 1.05$ (read on the meter or LED display).

(2) Series Tracking Adjustment

- A. Set the supply to Tracking series mode by engaging the left Tracking switch and releasing the right tracking switch.
- B. Set the CH2 CURRENT control to midrange and set the CH1 supply voltage controls to minimum (fully counterclockwise).

- C. Connect the multimeter to the CH1 SUPPLY outputs and measure the voltage.
- D. Disconnect the multimeter from the CH1 supply outputs and connect it across the CH2 supply outputs.
- E. Adjust trimmer potentiometer VR306 on the circuit board (located on the right side of the supply) to obtain the exact same reading for the CH2 supply output as was preset at the CH1 supply output (e.g., if the minimum CH1 supply output voltage is -10.00mV adjust VR306 to obtain an output voltage as close to -10.00mV at the CH2 supply as possible).
- F. Set the CH2 CURRENT control to midrange and set the CH1 supply voltage controls to maximum (fully clockwise).
- G. Connect the multimeter to the CH1 supply outputs and measure the voltage.
- H. Disconnect the multimeter from the CH1 supply outputs and connect it across the CH2 supply outputs.
- I. Set output on by adjusting VR501 (located at the left of the lower front panel circuit board, VOLTAGE/CURRENT CONTROL potentiometer board) until the voltage read from the multimeter is the same as it was across the CH1 output terminals. Return the multimeter to the CH1 output terminals and verify that the output voltage is identical. If not, repeat this step.

(3) Parallel Tracking Adjustment

- A. Disengage both Tracking mode switches (both switches out) so that the power supply is in the independent operating mode.
- B. Set the CH1 supply VOLTAGE and CURRENT controls to minimum (fully counterclockwise).
- C. Connect the multimeter across the CH1 supply output terminals and measure the output current.
- D. Set the CH1 supply VOLTAGE control to midrange and adjust the CURRENT control to obtain an output current of rating amps (read on

- E. Engaged both Tracking mode switches (both switches in), so that the power supply is in the parallel operating mode.
- F. Set the CH2 supply CURRENT control to maximum (fully clockwise) and set the VOLTAGE control to midrange.
- G. Set output on by adjusting the trimmer potentiometer VR502 on the circuit board (located on the right side of the supply) to obtain an output current of double rating amps on the multimeter.

6-4. Cleaning

To clean the power supply, use a soft cloth dampened in a solution of mild detergent and water. Do not spray cleaner directly onto the instrument, since it may leak into the cabinet and cause damage. Do not use chemicals containing benzene, benzene, toluene, xylene, acetone, or similar solvents. Do not use abrasive cleaners on any portion of the instrument.

6-5. Service, Repair and Calibration

For Service, Repair and calibration please contact your local Tenma distributor or go to <http://www.tenma.com>

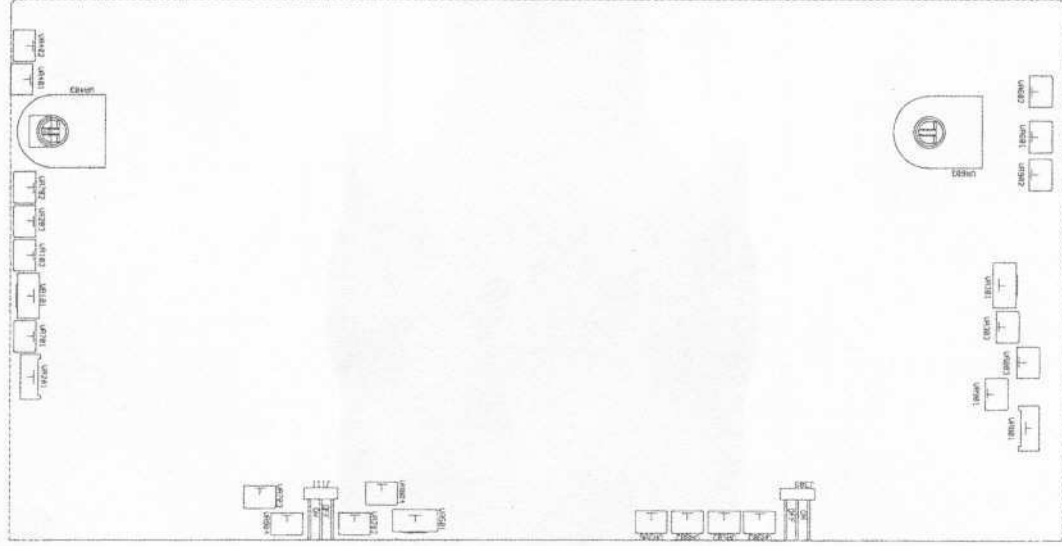


Fig. 6-1. Adjustment Location