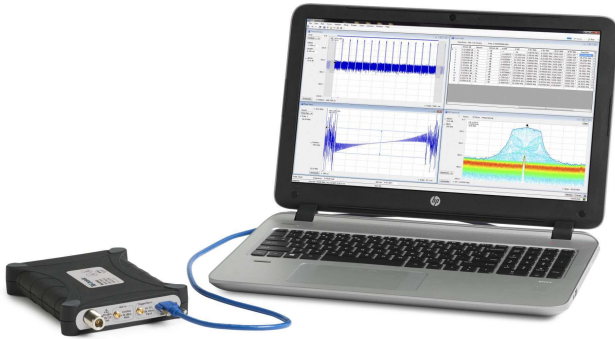


## Spectrum Analyzer

### RSA306B and RSA306B-SMA USB Real Time Spectrum Analyzer Datasheet



The RSA306B uses your PC and Tektronix SignalVu-PC™ RF Signal Analysis Software to provide real time spectrum analysis, streaming capture and deep signal analysis capabilities for signals from 9 kHz to 6.2 GHz, all in a low-cost, highly portable package that is ideal for field, factory, or academic use.

#### Key performance specifications

- 9 kHz to 6.2 GHz frequency range covers a broad range of analysis needs
- +20 dBm to -160 dBm measurement range
- Mil-Std 28800 Class 2 environmental, shock and vibration specifications for use in harsh conditions
- Fast sweeps (2 per second) over entire 6.2 GHz span for quick detection of unknown signals
- Acquisition bandwidth of 40 MHz enables wideband vector analysis of modern standards
- Minimum signal duration as short as 15 µsec captured with 100% probability of intercept

#### Key features

- Full-featured spectrum analysis capability with included Tektronix SignalVu-PC™ software
- 17 spectrum and signal analysis measurement displays enable dozens of measurement types
- Options for mapping, modulation analysis, WLAN, LTE, and Bluetooth standards support, pulse measurements, playback of recorded files, signal survey, and frequency/phase settling
- EMC/EMI pre-compliance and troubleshooting - CISPR detectors, predefined standards, limit lines, easy accessory setup, ambient capture, failure analysis, and report generation
- DataVu-PC software enables multi-unit recording in variable bandwidths

- Real time Spectrum/Spectrogram display to minimize time spent on transient and interference hunting
- Application programming interface (API) included for Microsoft Windows and Linux environments
- MATLAB instrument driver for use with Instrument Control Toolbox
- Streaming capture records long-term events
- Three year warranty

#### Applications

- Academics/education
- Maintenance, installation and repair in the factory or field
- Value-conscious design and manufacturing
- Interference hunting

#### The RSA306B: a new class of instrument

The RSA306B offers full-featured spectrum analysis and deep signal analysis at a price unmatched by any previous offering. Using the latest in commercial interfaces and available computing power, the RSA306B separates signal acquisition from measurement, dramatically lowering the cost of instrument hardware. Data analysis, storage and replay is performed on your personal computer, tablet or laptop. Managing the PC separately from the acquisition hardware makes computer upgrades easy, and minimizes IT management issues.

#### The RSA306B-SMA: for RF Sensor applications

The RSA306B-SMA is a derivative of the RSA306B USB Spectrum Analyzer with the following customer-driven enhancements, enabling convenient integration within custom systems and enclosures:

- Type-SMA RF input connector replacing the Type-N connector
- Optionally available without the protective case (NO SHELL)
- Optionally available with custom mounting hardware (MKIT) available for mounting the no-case chassis in custom enclosures.

### SignalVu-PC™ software and an API for deep analysis and fast programmatic interaction

The RSA306B operates with SignalVu-PC, a powerful program that is the basis of Tektronix performance signal analyzers. SignalVu-PC offers a deep analysis capability previously unavailable in value-priced solutions. Real-time processing of the DPX spectrum/spectrogram is enabled in your PC, further reducing the cost of hardware. Customers who need programmatic access to the instrument can choose either the SignalVu-PC programmatic interface or use the included application programming interface (API) that provides a rich set of commands and measurements for Windows and Linux. A MATLAB driver for the API is available, enabling operation with MATLAB and the Instrument Control Toolbox.

### DataVu-PC for multi-instrument recording and analysis of large recordings

DataVu-PC software can control two spectrum analyzers simultaneously with independent settings. This allows you to monitor a wide span, while recording at up to 40 MHz bandwidth at any frequency in the range of the instrument. Once recorded, DataVu-PC can find and mark signals of interest based on amplitude and frequency-mask characteristics, eliminating the need for manual inspection of long recordings. Pulse measurements are available on up to 2,000,000 pulses.

### Measurements included in SignalVu-PC base version

Basic functionality of the free SignalVu-PC program is far from basic. The table below summarizes the measurements included in the free SignalVu-PC software.

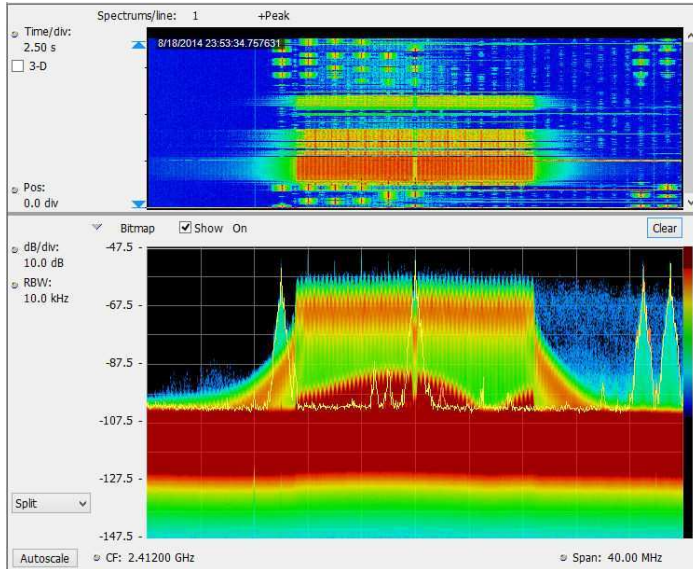
General signal analysis	
Spectrum analyzer	Spans from 1 kHz to 6.2 GHz  Three traces plus math and spectrogram trace  Five markers with power, relative power, integrated power, power density and dBc/Hz functions
DPX Spectrum/Spectrogram	Real time display of spectrum with 100% probability of intercept of 15 µsec signals in up to 40 MHz span
Amplitude, frequency, phase vs. time, RF I and Q vs. time	Basic vector analysis functions
Time Overview/Navigator	Enables easy setting of acquisition and analysis times for deep analysis in multiple domains
Spectrogram	Analyze and re-analyze your signal with a 2-D or 3-D waterfall display

Table continued...

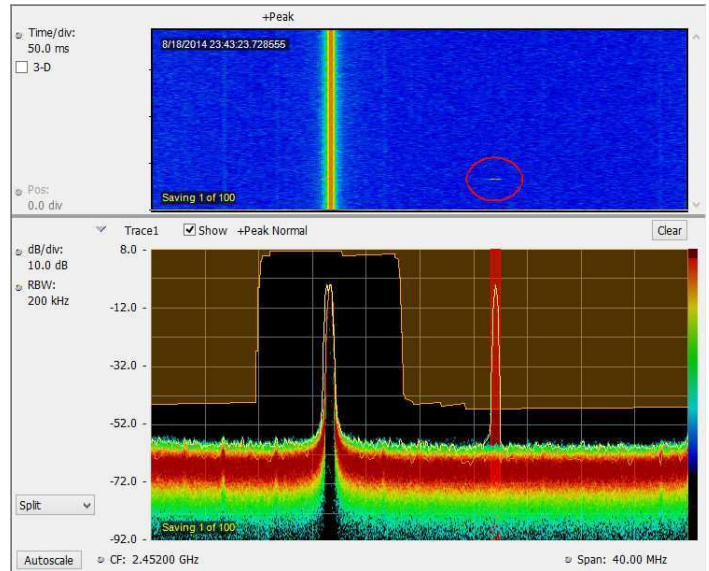
AM/FM listening	Hear, and record to file, FM and AM signals
<b>Analog modulation analysis</b>	
AM, FM, PM analysis	Measures key AM, FM, PM parameters
<b>RF measurements</b>	
Spurious measurement	User-defined limit lines and regions provide automatic spectrum violation testing across the entire range of the instrument; Four traces can be saved and recalled; CISPR Quasi-Peak and Average detectors available with option SVQP
Spectrum emission mask	User-defined or standards-specific masks
Occupied Bandwidth	Measures 99% power, -xdB down points
Channel Power and ACLR	Variable channel and adjacent/alternate channel parameters
MCPR	Sophisticated, flexible multi-channel power measurements
CCDF	Complementary Cumulative Distribution Function plots the statistical variations in signal level

### The RSA306B with SignalVu-PC offers basic and advanced measurements for field and lab

See what you've never seen before: The 40 MHz real time bandwidth of the RSA306B combined with the processing power of SignalVu-PC shows you every signal, even down to 15  $\mu$ s in duration when a high performance PC is used. The following image shows a WLAN transmission (green and orange), and the narrow signals that repeat across the screen are a Bluetooth access probe. The spectrogram (upper part of the screen) clearly separates these signals in time to show any signal collisions.

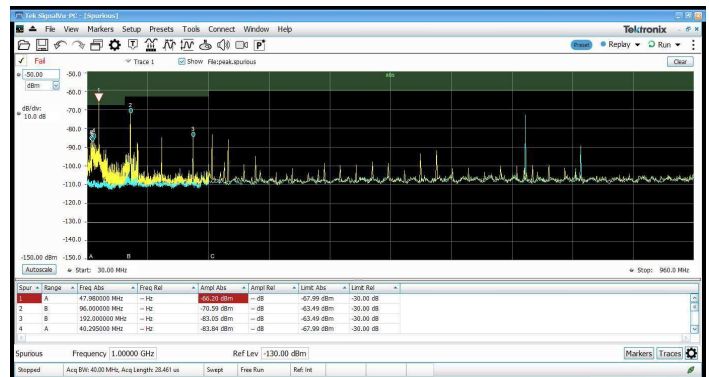


Monitoring has never been easier. Spectrum mask testing captures detail of transients found in the frequency domain, such as intermittent interference. Mask testing can be set to stop acquisition, save acquisition, save a picture, and send an audible alert. The following image shows a spectrum mask (in orange on the spectrum display) created to monitor a band of frequencies for violations. A single transient of 125  $\mu$ s duration has occurred that violated the mask, with the violation shown in red. The transient is clearly seen on the spectrogram above the red violation area (circled).



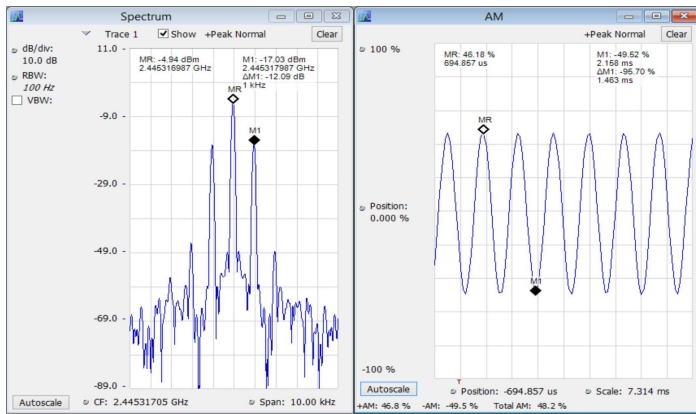
EMI pre-compliance and diagnostic measurements are easy with the RSA306B and SignalVu-PC. Transducer, antenna, preamplifier, and cable gain/loss can be entered and stored in correction files, and the standard spurious measurement feature of SignalVu-PC can be used to establish limit lines for your test. The following illustration shows a test from 30MHz to 960 MHz against the FCC Part 15 Class A limit shown shaded. The blue trace is the capture of Ambient. Violations are recorded in the results table below the graph. CISPR quasi peak and average detectors can be added with option SVQP.

The EMC pre-compliance solution can be added with option EMCVU. It supports many predefined limit lines. It also adds a wizard for easy setup of recommended antennas, LISN, and other EMC accessories with a one-button push. When using the new EMC-EMI display, you can accelerate the test by applying the time consuming quasi peak only on failures. This display also provides a push-button ambient measurement. The Inspect tool lets you measure frequencies of interest locally, removing the need for scanning.



Analysis of AM and FM signals is standard in SignalVu-PC. The following screen shot shows a 1 kHz tone amplitude modulating a carrier to 48.9% total AM. Markers are used on the spectrum display to measure the modulation sideband at 1 kHz offset, 12.28 dB down from

the carrier. The same signal is simultaneously viewed in the modulation display, showing AM versus time, with +Peak, -Peak and Total AM measurements. Advanced measurements for analog audio modulation including SINAD, THD and modulation rate are available in Option SVA.

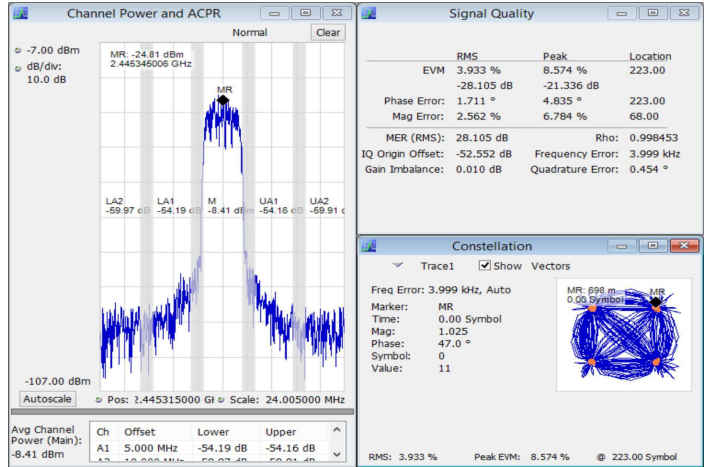


### SignalVu-PC application-specific licenses

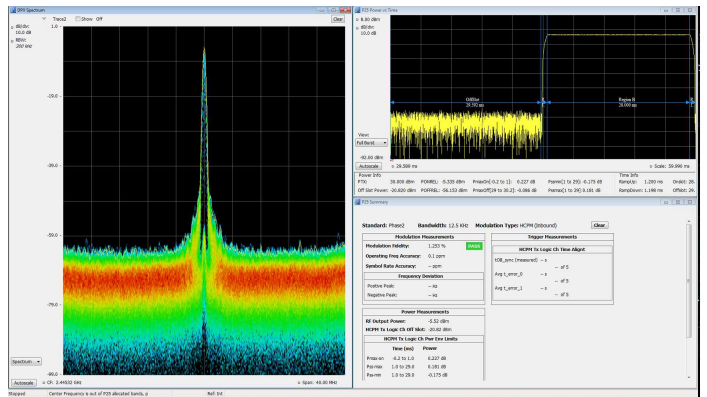
SignalVu-PC offers a wealth of application-oriented measurement and analysis licenses including:

- General-purpose modulation analysis (27 modulation types including 16/32/64/256 QAM, QPSK, O-QPSK, GMSK, FSK, APSK)
- EMC/EMI analysis with CISPR peak, quasi-peak, and average detectors
- P25 analysis of phase I and phase 2 signals
- WLAN analysis of 802.11a/b/g/j/p, 802.11n, 802.11ac
- LTE™ FDD and TDD Base Station (eNB) Cell ID & RF measurements
- Bluetooth® analysis of Basic Rate, Low Energy, and Bluetooth 5. Some support of Enhanced Data Rate
- Mapping and signal strength
- Pulse analysis
- AM/FM/PM/Direct Audio Measurement including SINAD, THD
- Playback of recorded files, including complete analysis in all domains
- Signal Classification and Survey

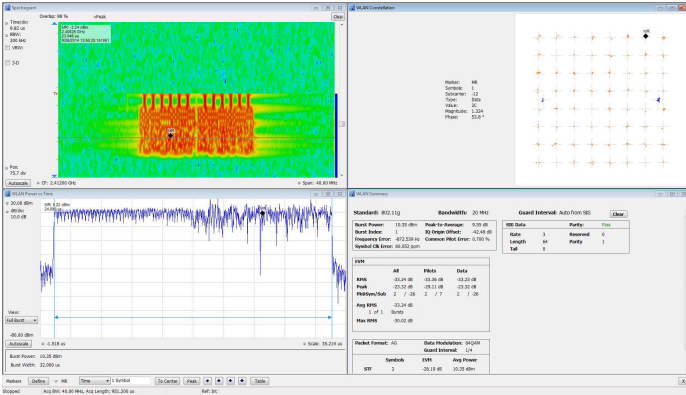
Modulation analysis application SVM enables multiple displays of modulation quality. The following screen shot shows the standard Channel Power/ACLR measurement combined with a constellation display and vector signal quality measurements on a QPSK signal.



SignalVu-PC application SV26 enables quick, standards-based transmitter health checks on APCO P25 signals. The following image shows a Phase II signal being monitored for anomalies with the spectrum analyzer while performing transmitter power, modulation and frequency measurements.

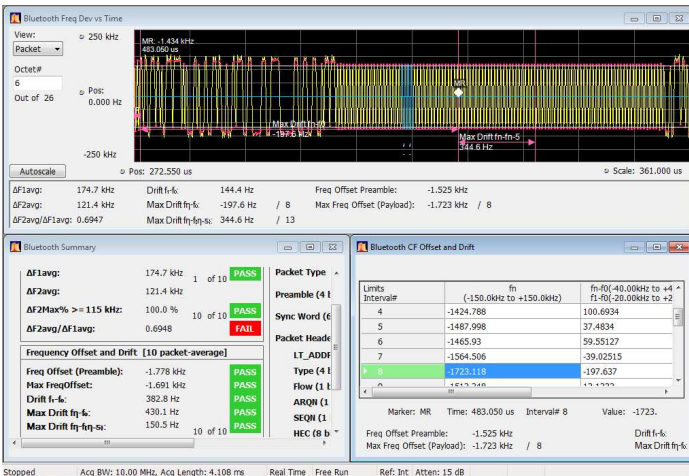


Sophisticated WLAN measurements are easy. On the 802.11g signal shown below, the spectrogram shows the initial pilot sequence followed by the main signal burst. The modulation is automatically detected as 64 QAM for the packet and displayed as a constellation. The data summary indicates an EVM of -33.24 dB RMS, and burst power is measured at 10.35 dBm. SignalVu-PC applications are available for 802.11a/b/j/g/p, 802.11n and 802.11ac to 40 MHz bandwidth.

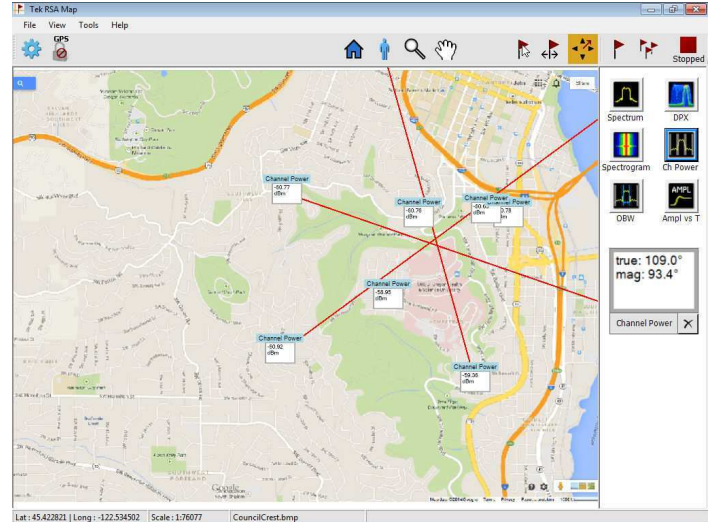


Two new options have been added to help with Bluetooth SIG standard-base transmitter RF measurements in the time, frequency and modulation domains. Option SV27 supports Basic Rate and Low Energy Transmitter measurements defined by RF.TS.4.2.0 and RF-PHY.TS.4.2.0 Test Specification. It also demodulates and provides symbol information for Enhanced Data Rate packets. Option SV31 supports Bluetooth 5 standards (LE 1M, LE 2M, LE Coded) and measurements defined in the Core Specification. Both options also decode the physical layer data that is transmitted and color-encode the fields of packet in the Symbol Table for clear identification.

Pass/Fail results are provided with customizable limits. Measurement below shows deviation vs. time, frequency offset and drift and a measurement summary with Pass/Fail results.



The SignalVu-PC MAP application enables interference hunting and location analysis. Locate interference with an azimuth function that lets you draw a line or an arrow on a mapped measurement to indicate the direction your antenna was pointing when you take a measurement. You can also create and display measurement labels.



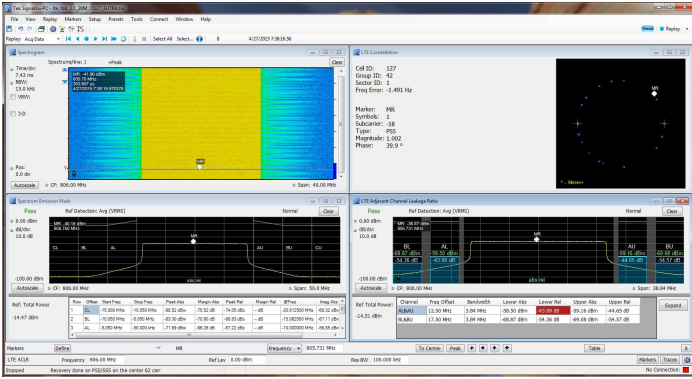
Application SV28 enables the following LTE base station transmitter measurements:

- Cell ID
- Channel Power
- Occupied Bandwidth
- Adjacent Channel Leakage Ratio (ACLR)
- Spectrum Emission Mask (SEM)
- Transmitter Off Power for TDD
- Reference Signal (RS) Power

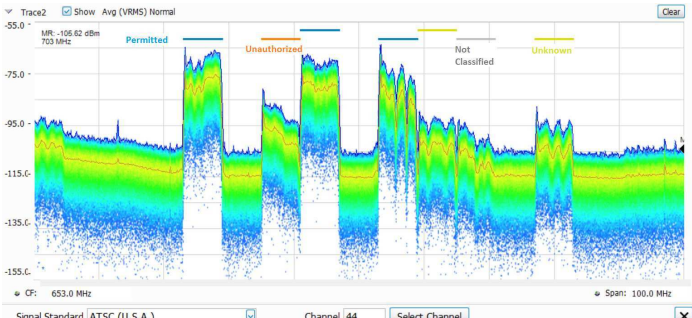
There are four presets to accelerate pre-compliance testing and determine the Cell ID. These presets are defined as Cell ID, ACLR, SEM, Channel Power and TDD Toff Power. The measurements follow the definition in 3GPP TS Version 12.5 and support all base station categories, including picocells and femtocells. Pass/Fail information is reported and all channel bandwidths are supported.

The Cell ID preset displays the Primary Synchronization Signal (PSS) and the Secondary Synchronization Signal (SSS) in a Constellation diagram. It also provides Frequency Error.

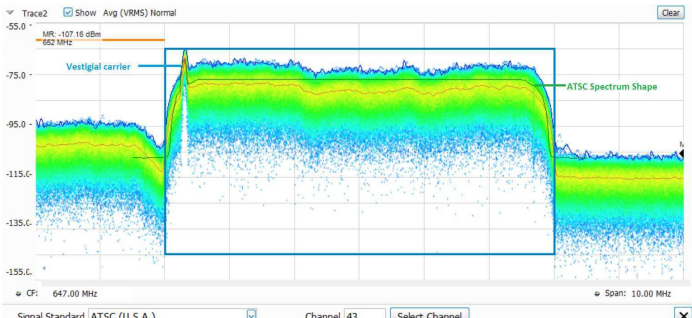
The ACLR preset measures the E-UTRA and the UTRA adjacent channels, with different chip rates for UTRA. ACLR also supports Noise Correction based on the noise measured when there is no input. Both ACLR and SEM will operate in swept mode (default) or in faster single acquisition (real-time) when the measurement bandwidth required is less than 40 MHz.



The signal classification application (SV54) enables expert systems guidance to aid the user in classifying signals. It provides graphical tools that allow you to quickly create a spectral region of interest, enabling you to classify and sort signals efficiently. The spectral profile mask, when overlaid on top of a trace, provides signal shape guidance, while frequency, bandwidth, channel number, and location are displayed allowing for quick checks. WLAN, GSM, W-CDMA, CDMA, Bluetooth standard and enhanced data rate, LTE FDD and TDD, and ATSC signals can be quickly and simply classified. Databases can be imported from your H500/RSA2500 signal database library for easy transition to the new software base.



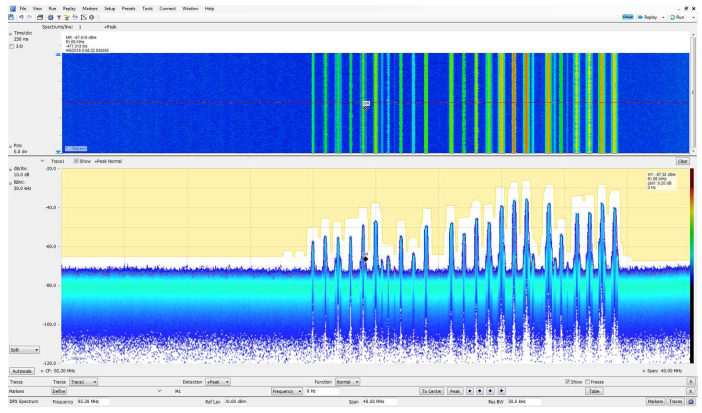
Above is a typical signal survey. This survey is of a portion of the TV broadcast band, and 7 regions have been declared as either Permitted, Unknown, or Unauthorized, as indicated by the color bars for each region.



In this illustration, a single region has been selected. Since we have declared this to be an ATSC video signal, the spectrum mask for the ATSC signal is shown overlaid in the region. The signal is a close match to the spectrum mask, including the vestigial carrier at the lower side of the signal, characteristic of ATSC broadcasts.

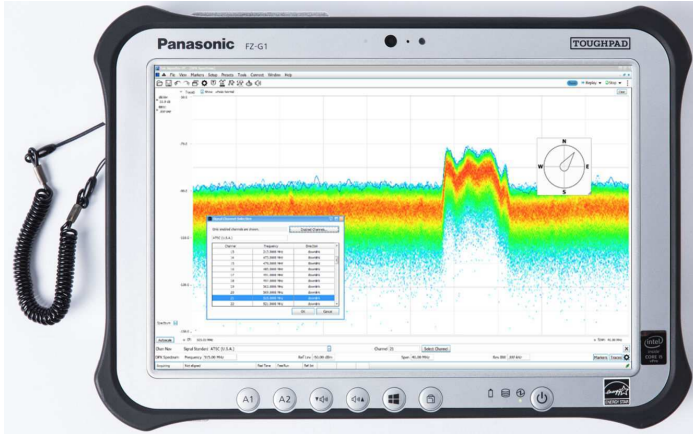
SignalVu-PC with mapping can be used to manually indicate the azimuth of a measurement made in the field, greatly aiding in triangulation efforts. The addition of a smart antenna able to report its direction to SignalVu-PC automates this process. Automatically plotting the azimuth/bearing of a measurement during interference hunting can greatly speed the time spent searching for the source of interference. Tektronix offers the Alaris DF-A0047 handheld direction finding antenna with frequency coverage from 20 MHz -8.5 GHz (optional 9 kHz-20 MHz) as part of a complete interference hunting solution. Azimuth information and the selected measurement is automatically recorded on the SignalVu-PC Map just by releasing the control button on the antenna. Full specifications for the DF-A0047 antenna are available in a separate antenna datasheet available on [www.Tektronix.com](http://www.Tektronix.com).

Playback of recorded signals can reduce hours of watching and waiting for a spectral violation to minutes at your desk reviewing recorded data. Recording length is limited only by storage media size and recording is a basic feature included in SignalVu-PC. SignalVu-PC application SV56 Playback allows for complete analysis by all SignalVu-PC measurements, including DPX Spectrogram. Minimum signal duration specifications are maintained during playback. AM/FM audio demodulation can be performed. Variable span, resolution bandwidth, analysis length, and bandwidth are all available. Frequency mask testing can be performed on recorded signals up to 40 MHz in span, with actions on mask violation including beep, stop, save trace, save picture, and save data. Portions of the playback can be selected and looped for repeat examination of signals of interest. Playback can be skip-free, or time gaps can be inserted to reduce review time. A Live Rate playback ensures fidelity of AM/FM demodulation and provides a 1:1 playback vs. actual time. Clock time of the recording is displayed in the spectrogram markers for correlation to real world events. In the illustration below, the FM band is being replayed, with a mask applied to detect spectral violations, simultaneous with listening to the FM signal at the center frequency of 92.3 MHz.



## Instrument controller for USB spectrum analyzers

For field operations, a complete solution requires a Windows Tablet or laptop for instrument operation, record keeping and communication. Tektronix recommends the Panasonic FZ-G1 tablet computer for controlling the RSA306B and as a standalone unit.



The Panasonic FZ-G1 tablet computer is sold separately and is available for purchase from Panasonic at <https://na.panasonic.com/us/computers-tablets-handhelds/tablets/tablets/toughpad-fz-g1> and a variety of third party vendors. Tektronix recommends the FZ-G1 over other tablets because of its performance, portability, and ruggedized form-factor and it has been tested to work with all USB RSA products.

### Key specifications of the instrument controller

- Windows 10 Pro 64-bit operating system
- Intel® Core i5-6300U vPro™ 2.4-3.0 GHz Processor
- 8GB RAM
- 256 GB Solid State Drive
- 10.1" (25.6 cm) Daylight-readable screen
- 10-point Multi Touch+ Digitizer screen plus included pen interface
- USB 3.0 + HDMI Ports, 2<sup>nd</sup> USB Port
- Wi-Fi, Bluetooth® and 4G LTE Multi Carrier Mobile Broadband with Satellite GPS

## Specifications

All specifications are guaranteed unless noted otherwise.

### Frequency

RF input frequency range 9 kHz to 6.2 GHz

#### Frequency reference accuracy

Initial accuracy at calibration  $\pm 3$  ppm + aging (after 20 minute warmup at 18 °C to 28 °C ambient)  
 Accuracy, typical  $\pm 20$  ppm + aging (after 20 minute warm up at -10 °C to 55 °C ambient)  
 Aging, typical  $\pm 3 \times 10^{-6}$  (1<sup>st</sup> year),  $\pm 1 \times 10^{-6}$ /year thereafter

#### External frequency reference input

Input frequency range 10 MHz  $\pm 10$  Hz  
 Input level range -10 dBm to +10 dBm sinusoid  
 Impedance 50  $\Omega$

#### Center frequency resolution

Block IQ samples 1 Hz  
 Streamed ADC samples 500 kHz

### Amplitude

RF input impedance 50  $\Omega$

RF input VSWR (typical)  $\leq 1.8:1$  (10 MHz to 6200 MHz, reference level  $\geq +10$  dBm)  
 (Equivalent Return Loss:  $\geq 11$  dB)

#### Maximum RF input level without damage

DC voltage  $\pm 40 V_{DC}$   
 Reference level  $\geq -10$  dBm +23 dBm (continuous or peak)  
 Reference level  $< -10$  dBm +15 dBm (continuous or peak)

#### Maximum RF input operating level

The maximum level at the RF input for which the instrument will meet its measurement specifications.

Center frequency  $< 22$  MHz (low-frequency path) +15 dBm  
 Center frequency  $\geq 22$  MHz (RF path) +20 dBm

#### Amplitude accuracy at all center frequencies

Center frequency	Warranted (18 °C to 28 °C)	Typical (95% confidence) (18 °C to 28 °C)	Typical (-10 °C to 55 °C)
9 kHz - < 3 GHz	$\pm 1.2$ dB	$\pm 0.8$ dB	$\pm 1.0$ dB
Table continued...			



Center frequency	Warranted (18 °C to 28 °C)	Typical (95% confidence) (18 °C to 28 °C)	Typical (-10 °C to 55 °C)
≥ 3 GHz - 6.2 GHz	±1.65 dB	±1.0 dB	±1.5 dB

Reference level +20 dBm to -30 dBm, alignment run prior to testing.

Applies to corrected IQ data, with signal to noise ratios > 40 dB.

The above specifications apply when operated and stored at the average factory calibration absolute humidity conditions (8 grams of water per cubic meter of air). Additional humidity specifications are provided in the Specifications and Performance Verification Technical Reference.

## Intermediate frequency and acquisition system

IF bandwidth 40 MHz

ADC sample rate and bit width 112 Ms/s, 14 bits

Real-time IF acquisition data (uncorrected) 112 Ms/s, 16-bit integer real samples  
 40 MHz BW, 28 ±0.25 MHz Digital IF, uncorrected. Corrected values are stored with saved files  
 Block streaming data at an average rate of 224 MB/s

### Block baseband acquisition data (corrected)

Maximum acquisition time 1 second  
 Bandwidths ≤ 40 / (2<sup>N</sup>) MHz, 0 Hz Digital IF, N ≥ 0  
 Sample rates ≤ 56 / (2<sup>N</sup>) Msps, 32-bit float complex samples, N ≥ 0

Channel amplitude flatness Reference level +20 dBm to -30 dBm, alignment run before testing. Applies to corrected IQ data, with signal to noise ratios >40 dB.

Center frequency range	Warranted	Typical
<b>18 °C to 28 °C</b>		
24 MHz to 6.2 GHz	±1.0 dB	±0.4 dB
22 MHz to 24 MHz	±1.2 dB	±1.0 dB
<b>-10 °C to 55 °C</b>		
24 MHz to 6.2 GHz	---	±0.5 dB
22 MHz to 24 MHz	---	±2.5 dB

## Trigger

### Trigger/sync input

Voltage range TTL, 0.0 V – 5.0 V  
 Trigger level, positive-going threshold voltage 1.6 V minimum; 2.1 V maximum  
 Trigger level, negative-going threshold voltage 1.0 V minimum; 1.35 V maximum  
 Impedance 10 kΩ

### IF power trigger

Threshold range 0 dB to -50 dB from reference level, for trigger levels > 30 dB above the noise floor

Type Rising or falling edge  
 Trigger re-arm time ≤100 μs

### Noise and distortion

**Displayed Average Noise Level (DANL)** Reference level = -50 dBm, input terminated with 50 Ω load, log-average detection (10 averages). SignalVu-PC Spectrum measurements with Span > 40 MHz may use LF or RF path in the first segment of the spectrum sweep.

Center frequency	Frequency range	DANL (dBm/Hz)	DANL (dBm/Hz), typical
< 22 MHz (LF path)	100 kHz - 42 MHz	≤-130	-133
≥ 22 MHz (RF path)	2 MHz - <5 MHz	≤-145	≤-148
	5 MHz - <1.0 GHz	≤-161	≤-163
	1.0 GHz - <1.5 GHz	≤-160	≤-162
	1.5 GHz - <2.5 GHz	≤-157	≤-159
	2.5 GHz - <3.5 GHz	≤-154	≤-156
	3.5 GHz - <4.5 GHz	≤-152	≤-155
	4.5 GHz - 6.2 GHz	≤-149	≤-151

**Phase noise** Phase noise measured with 1 GHz CW signal at 0 dBm.  
 The following table entries are in dBc/Hz units.

Offset	Center frequency				
	1 GHz	10 MHz (typical)	1 GHz (typical)	2.5 GHz (typical)	6 GHz (typical)
1 kHz	≤-84	≤-115	≤-89	≤-78	≤-83
10 kHz	≤-84	≤-122	≤-87	≤-84	≤-85
100 kHz	≤-88	≤-126	≤-93	≤-92	≤-95
1 MHz	≤-118	≤-127	≤-120	≤-114	≤-110

### Residual spurious response, typical

(Reference level ≤ -50 dBm, RF input terminated with 50 Ω load)

**CF range 9 kHz - < 1 GHz** < -100 dBm  
**CF range 1 GHz - < 3 GHz** < -95 dBm  
**CF range 3 GHz - 6.2 GHz** < -90 dBm  
**With these exceptions for LO related spurs** < -80 dBm: 2080-2120 MHz  
 < -80 dBm: 3895-3945 MHz  
 < -85 dBm: 4780-4810 MHz

**Residual FM** < 10 Hz<sub>p-p</sub> (95% confidence)

### 3<sup>RD</sup> order IM distortion

Two CW signals, 1 MHz separation, each input signal level 5 dB below the reference level setting at the RF input Reference level at -15 dBm disables Preamp; reference level at -30 dBm enables Preamp.

**Center frequency 2130 MHz** ≤ -63 dBc at reference level -15 dBm, 18 °C to 28 °C  
 ≤ -63 dBc, at reference level -15 dBm, -10 °C to 55 °C, typical

40 MHz to 6.2 GHz, typical  
 ≤ -63 dBc, at reference level -30 dBm, typical  
 < -58 dBc at reference level = -10 dBm  
 < -50 dBc at reference level = -50 dBm

**3<sup>RD</sup> order intercept (TOI)**

Center frequency 2130 MHz  
 ≥ +13 dBm at reference level -15 dBm, 18 °C to 28 °C  
 ≥ +13 dBm, at reference level -15 dBm, -10 °C to 55 °C, typical  
 ≥ -2 dBm, at reference level -30 dBm, typical

40 MHz to 6.2 GHz, typical  
 +14 dBm at reference level -10 dBm  
 -30 dBm at reference level -50 dBm

**2<sup>ND</sup> harmonic distortion, typical**  
 < -55 dBc, 10 MHz to 300 MHz, reference level = 0 dBm  
 < -60 dBc, 300 MHz to 3.1 GHz, reference level = 0 dBm  
 < -50 dBc, 10 MHz to 3.1 GHz, reference level = -40 dBm  
 Exception: < -45 dBc in the range 1850-2330 MHz

**2<sup>ND</sup> harmonic intercept (SHI)**  
 +55 dBm, 10 MHz to 300 MHz, reference level = 0 dBm  
 +60 dBm, 300 MHz to 3.1 GHz, reference level = 0 dBm  
 +10 dBm, 10 MHz to 3.1 GHz, reference level = -40 dBm (Exception: +5 dBm in the range 1850-2330 MHz)

**Input related spurious response (SFDR)**

Input frequencies at ≤ 6.2 GHz and 18 - 28 °C

Level	Center frequency range
Spurious responses due to the following mechanisms: RFx2*LO1, 2RFx2*LO1, RFx3LO1, RFx5LO1, RF to IF feedthrough, IF2 image	
≤ -60 dBc	≤ 6200 MHz
Spurious responses due to 1st IF images (RFxLO1)	
≤ -60 dBc	< 2700 MHz
≤ -50 dBc	2700 - 6200 MHz

With these exceptions at ≤ 6.2 GHz and 18 - 28 °C, typical

Type	Level	Center frequency range
IF feedthrough	≤ -45 dBc	1850 - 2700 MHz
1st IF image	≤ -55 dBc	1850 - 1870 MHz
	≤ -35 dBc	3700 - 3882 MHz
	≤ -35 dBc	5400 - 5700 MHz
2nd IF image	≤ -50 dBc	22 - 1850 MHz
	≤ -50 dBc	4175 - 4225 MHz
RFx2LO	≤ -50 dBc	4750 - 4810 MHz
2RFx2LO	≤ -50 dBc	3900 - 3840 MHz
RFx3LO	≤ -45 dBc	4175 - 4225 MHz

Spurious responses due to ADC images at 18 - 28 °C

Level	Center frequency range
≤ -60 dBc	Offset from center frequency > 56 MHz
Table continued...	

Level	Center frequency range
≤ -50 dBc	56 MHz ≥ offset from center frequency ≥ 36 MHz

Local oscillator feedthrough to input connector < -75 dBm at reference level = -30 dBm

### Audio output

Audio output (from SignalVu-PC or application programming interface)

Types	AM, FM
IF bandwidth range	Five selections, 8 kHz – 200 kHz
Audio output frequency range	50 Hz – 10 kHz
PC audio output	16 bits at 32 ks/s
Audio file output format	.wav format, 16 bit, 32 ks/s

### SignalVu-PC base performance summary

#### SignalVu-PC/RSA306B key characteristics

Maximum span	40 MHz real-time 9 kHz - 6.2 GHz swept
Maximum acquisition time	2.0 s
Minimum IQ resolution	17.9 ns (acquisition BW = 40 MHz)
Tuning Tables	Tables that present frequency selection in the form of standards-based channels are available for the following. Cellular standards families: AMPS, NADC, NMT-450, PDC, GSM, CDMA, CDMA-2000, 1xEV-DO WCDMA, TD-SCDMA, LTE, WiMax  Unlicensed short range: 802.11a/b/j/g/p/n/ac, Bluetooth  Cordless phone: DECT, PHS  Broadcast: AM, FM, ATSC, DVBT/H, NTSC  Mobile radio, pagers, other: GMRS/FRS, iDEN, FLEX, P25, PWT, SMR, WiMax

#### Signal Strength display

Signal strength indicator	Located at right side of display
Measurement bandwidth	Up to 40 MHz, dependent on span and RBW setting
Tone type	Variable frequency based on received signal strength

#### Spectrum and Spurious display

Traces	Three traces + 1 math trace + 1 trace from spectrogram for Spectrum display; four traces for Spurious display
Trace functions	Normal, Average (VRMS), Max Hold, Min Hold, Average of Logs
Detector	Average (VRMS), Average (of logs), CISPR peak, +Peak, Sample for Spectrum only -Peak; when Option SVQP is enabled, CISPR Quasi Peak and Average
Spectrum trace length	801, 2401, 4001, 8001, 10401, 16001, 32001, and 64001 points
RBW range	1.18 Hz to 8 MHz for Spectrum display

**DPX spectrum display**

**Spectrum processing rate (RBW = auto, trace length 801)** ≤10,000 spectrums per second (span independent)

**DPX bitmap resolution** 201 pixels vertical x 801 pixels horizontal

**DPX Spectrogram minimum time resolution<sup>1</sup>** 1 ms  
 ≤10,000 per second (span independent)

**Marker information** Amplitude, frequency, signal density

**Minimum signal duration for 100% probability of intercept (POI), typical<sup>1</sup>**

Minimum signal duration for 100% POI	Test controller
27	Dell Desktop (Windows® 10 Enterprise, Intel® Core™ i7-4790 CPU, 3.6GHz, 8GB RAM, 256GB SSD)
34	Dell Desktop (Windows® 7 Enterprise, Intel® Core™ i7-2600 CPU, 3.4GHz, 8GB RAM, 256GB SSD)
36	Dell Desktop Latitude E6430 (Windows® 10 Enterprise, Intel® Core™ i7-3520M CPU, 2.9GHz, 8GB RAM, 750GB HD)
35	Dell Laptop Precision M4700 (Windows® 8 Enterprise, Intel® Core™ i7-3520M CPU, 2.9GHz, 8GB RAM, 750GB HD)
37	Panasonic ToughPad SAPL-TP-04 (Windows® 7 Pro, Intel® Core™ i5-5300U CPU, 2.3GHz, 8GB RAM, 256GB SSD)

**Span range (continuous processing)** 1 kHz to 40 MHz

**Span range (swept)** Up to maximum frequency range of instrument

**Dwell time per step** 50 ms to 100 s

**Trace processing** Color-graded bitmap, +Peak, -Peak, average

**Trace length** 801, 2401, 4001, 10401

**RBW range** 1 kHz to 4.99 MHz

**Full span sweep speed**

- 1 MHz** 16.5 GHz/sec
- 100 kHz** 16.5 GHz/sec
- 10 kHz** 13.7 GHz/sec
- 1 kHz** 1.9 GHz/sec

**Related information:** Measured using a Panasonic Toughpad FZ-G1, Intel® Core™ i5-5300U 2.3GHz Processor, 8GB RAM, 256GB SSD, Windows®7 Pro. Spectrum display only measurement on screen.

<sup>1</sup> Due to the non-deterministic execution time of programs running under the Microsoft Windows™ OS, this specification may not be met when the host PC is heavily loaded with other processing tasks.

**DPX spectrogram display**

Trace detection	+Peak, -Peak, Average( $V_{RMS}$ )
Trace length, memory depth	801 (60,000 traces) 2401 (20,000 traces) 4001 (12,000 traces)
Time resolution per line	1 ms to 6400 s, user selectable

**Analog modulation analysis (standard)**

<b>AM demodulation accuracy, typical</b>	$\pm 2\%$ 0 dBm input at center, carrier frequency 1 GHz, 1 kHz/5 kHz input/modulated frequency, 10% to 60% modulation depth 0 dBm input power level, reference level = 10 dBm
<b>FM demodulation accuracy, typical</b>	$\pm 3\%$ 0 dBm input at center, carrier frequency 1 GHz, 400 Hz/1 kHz input/modulated frequency 0 dBm input power level, reference level = 10 dBm
<b>PM demodulation accuracy, typical</b>	$\pm 1\%$ of measurement bandwidth 0 dBm input at center, carrier frequency 1 GHz, 1 kHz/5 kHz input/modulated frequency 0 dBm input power level, reference level = 10 dBm

**SignalVu-PC application licenses****AM/FM/PM and direct audio measurement (SVAXx-SVPC)**

<b>Carrier frequency range (for modulation and audio measurements)</b>	( $1/2 \times$ audio analysis bandwidth) to maximum input frequency
<b>Maximum audio frequency span</b>	10 MHz
<b>FM measurements (Mod. index &gt;0.1)</b>	Carrier Power, Carrier Frequency Error, Audio Frequency, Deviation (+Peak, -Peak, Peak-Peak/2, RMS), SINAD, Modulation Distortion, S/N, Total Harmonic Distortion, Total Non-harmonic Distortion, Hum and Noise
<b>AM measurements</b>	Carrier Power, Audio Frequency, Modulation Depth (+Peak, -Peak, Peak-Peak/2, RMS), SINAD, Modulation Distortion, S/N, Total Harmonic Distortion, Total Non-harmonic Distortion, Hum and Noise
<b>PM measurements</b>	Carrier Power, Carrier Frequency Error, Audio Frequency, Deviation (+Peak, -Peak, Peak-Peak/2, RMS), SINAD, Modulation Distortion, S/N, Total Harmonic Distortion, Total Non-harmonic Distortion, Hum and Noise
<b>Direct audio measurements</b>	Signal power, Audio frequency (+Peak, -Peak, Peak-Peak/2, RMS), SINAD, Modulation distortion, S/N, Total harmonic distortion, Total non-harmonic distortion, Hum and Noise (Direct audio measurements are limited to >9 kHz by input frequency)
<b>Audio filters</b>	Low pass, kHz: 0.3, 3, 15, 30, 80, 300, and user-entered up to $0.9 \times$ audio bandwidth High pass, Hz: 20, 50, 300, 400, and user-entered up to $0.9 \times$ audio bandwidth Standard: CCITT, C-Message De-emphasis ( $\mu$ s): 25, 50, 75, 750, and user-entered File: User-supplied .TXT or .CSV file of amplitude/frequency pairs. Maximum 1000 pairs

<b>Performance characteristics, typical</b>	Conditions: Unless otherwise stated, performance is given for: Modulation rate = 5 kHz AM depth: 50% PM deviation 0.628 Radians			
	<b>FM</b>	<b>AM</b>	<b>PM</b>	<b>Conditions</b>
Carrier power accuracy	Refer to instrument amplitude accuracy			
Carrier frequency accuracy	$\pm 7 \text{ Hz} + (\text{transmitter frequency} \times \text{ref. freq. error})$	Refer to instrument frequency accuracy	$\pm 2 \text{ Hz} + (\text{transmitter frequency} \times \text{ref. freq. error})$	
Depth of modulation accuracy	NA	$\pm 0.5\%$	NA	
Deviation accuracy	$\pm (2\% \times (\text{rate} + \text{deviation}))$	NA	$\pm 3\%$	
Rate accuracy	$\pm 0.2 \text{ Hz}$	$\pm 0.2 \text{ Hz}$	$\pm 0.2 \text{ Hz}$	
Residual THD	0.5%	0.5%	NA	
Residual SINAD	49 dB 40 dB	56 dB	42 dB	

**Pulse measurements (SVPxx-SVPC)**

**Measurements (nominal)**

Pulse-Ogram™ waterfall display of multiple segmented captures, with amplitude vs time and spectrum of each pulse. Pulse frequency, Delta Frequency, Average on power, Peak power, Average transmitted power, Pulse width, Rise time, Fall time, Repetition interval (seconds), Repetition interval (Hz), Duty factor (%), Duty factor (ratio), Ripple (dB), Ripple (%), Droop (dB), Droop (%), Overshoot (dB), Overshoot (%), Pulse- Ref Pulse frequency difference, Pulse- Ref Pulse phase difference, Pulse-Pulse frequency difference, Pulse- Pulse phase difference, RMS frequency error, Max frequency error, RMS phase error, Max phase error, Frequency deviation, Phase deviation, Impulse response (dB), Impulse response (time), Time stamp.

**Minimum pulse width for detection, typical**

150 ns

**Average ON power at 18 °C to 28 °C, typical**

$\pm 1.0 \text{ dB} + \text{absolute amplitude accuracy}$   
For pulses of 300 ns width or greater, duty cycles of .5 to .001, and S/N ratio  $\geq 30 \text{ dB}$

**Duty factor, typical**

$\pm 0.2\%$  of reading  
For pulses of 450 ns width or greater, duty cycles of .5 to .001, and S/N ratio  $\geq 30 \text{ dB}$

**Average transmitted power, typical**

$\pm 1.0 \text{ dB} + \text{absolute amplitude accuracy}$   
For pulses of 300 ns width or greater, duty cycles of .5 to .001, and S/N ratio  $\geq 30 \text{ dB}$

**Peak pulse power, typical**

$\pm 1.5 \text{ dB} + \text{absolute amplitude accuracy}$   
For pulses of 300 ns width or greater, duty cycles of .5 to .001, and S/N ratio  $\geq 30 \text{ dB}$

**Pulse width, typical**

$\pm 0.25\%$  of reading  
For pulses of 450 ns width or greater, duty cycles of .5 to .001, and S/N ratio  $\geq 30 \text{ dB}$

**General purpose digital modulation analysis (SVMxx- SVPC)**

<b>Modulation formats</b>	BPSK, QPSK, 8PSK, 16QAM, 32QAM, 64QAM, 128QAM, 256QAM, $\pi/2$ DBPSK, DQPSK, $\pi/4$ DQPSK, D8PSK, D16PSK, SBPSK, OQPSK, SOQPSK, 16-APSK, 32-APSK, MSK, GFSK, CPM, 2FSK, 4FSK, 8FSK, 16FSK, C4FM
<b>Analysis period</b>	Up to 163,500 samples
<b>Measurement filter</b>	Root Raised Cosine, Raised Cosine, Gaussian, Rectangular, IS-95 TX_MEA, IS-95 Base TXEQ_MEA, None
<b>Reference Filter</b>	Gaussian, Raised Cosine, Rectangular, IS-95 REF, None
<b>Filter rolloff factor</b>	$\alpha$ : 0.001 to 1, in 0.001 steps
<b>Measurements</b>	Constellation, Demod I&Q vs. Time, Error Vector Magnitude (EVM) vs. Time, Eye Diagram, Frequency Deviation vs. Time, Magnitude Error vs. Time, Phase Error vs. Time, Signal Quality, Symbol Table, Trellis Diagram
<b>Maximum symbol rate</b>	240 M symbols/s Modulated signal must be contained entirely within the acquisition bandwidth
<b>Adaptive equalizer</b>	Linear, Decision-Directed, Feed-Forward (FIR) equalizer with coefficient adaptation and adjustable convergence rate. Supports modulation types BPSK, QPSK, OQPSK, DQPSK, $\pi/2$ DBPSK, $\pi/4$ DQPSK, 8PSK, D8SPK, D16PSK, 16/32/64/128/256-QAM, 16/32-APSK
<b>QPSK Residual EVM (center frequency = 2 GHz), typical mean</b>	1.1 % (100 kHz symbol rate) 1.1 % (1 MHz symbol rate) 1.2 % (10 MHz symbol rate) 2.5 % (30 MHz symbol rate) 400 symbols measurement length, 20 Averages, normalization reference = maximum symbol magnitude
<b>256 QAM Residual EVM (center frequency = 2 GHz), typical mean</b>	0.8 % (10 MHz symbol rate) 1.5 % (30 MHz symbol rate) 400 symbols measurement length, 20 Averages, normalization reference = maximum symbol magnitude

**WLAN Measurements, 802.11a/b/g/ j/p (SV23xx-SVPC)**

<b>Measurements</b>	WLAN power vs. time; WLAN symbol table; WLAN constellation; spectrum emission mask; error vector magnitude (EVM) vs. symbol (or time), vs subcarrier (or frequency); mag error vs symbol (or time), vs. subcarrier (or frequency); phase error vs symbol (or time), vs. subcarrier (or frequency); channel frequency response vs. symbol (or time), vs. subcarrier (or frequency); spectral flatness vs. symbol (or time), vs. subcarrier (or frequency)
<b>Residual EVM - 802.11a/g/j /p (OFDM), 64-QAM, typical</b>	2.4 GHz, 20 MHz BW: -38 dB 5.8 GHz, 20 MHz BW: -38 dB Input signal level optimized for best EVM, average of 20 bursts, $\geq 16$ symbols each
<b>Residual EVM - 802.11b, CCK-11, typical</b>	2.4 GHz, 11 Mbps: 2.0 % Input signal level optimized for best EVM, average of 1,000 chips, BT = .61

**WLAN Measurements 802.11n (SV24xx-SVPC)**

<b>Measurements</b>	WLAN power vs. time; WLAN symbol table; WLAN constellation; spectrum emission mask; error vector magnitude (EVM) vs. symbol (or time), vs subcarrier (or frequency); mag error vs symbol (or time), vs. subcarrier (or frequency); phase error vs symbol (or time), vs. subcarrier (or frequency); channel frequency response vs. symbol (or time), vs. subcarrier (or frequency); spectral flatness vs. symbol (or time), vs. subcarrier (or frequency)
---------------------	--





Measurement range: Nominal channel frequency  $\pm 100$  kHz

**Initial Carrier Frequency Tolerance (ICFT) (BR and LE), typical mean** Measurement uncertainty (at 0 dBm):  $<1$  kHz  $2 +$  instrument frequency uncertainty  
Measurement range: Nominal channel frequency  $\pm 100$  kHz

**Carrier Frequency Drift (BR and LE), typical mean** Supported measurements: Max freq. offset, drift  $f_1 - f_0$ , max drift  $f_n - f_0$ , max drift  $f_n - f_{n-5}$  (BR and LE 50  $\mu$ s)  
Measurement uncertainty:  $<2$  kHz  $+$  instrument frequency uncertainty  
Measurement range: Nominal channel frequency  $\pm 100$  kHz

**In-band emissions (ACPR) (BR and LE)** Level uncertainty: refer to instrument amplitude and flatness specification

**LTE Downlink RF measurements (SV28xx-SVPC)**

**Standard Supported** 3GPP TS 36.141 Version 12.5  
**Frame Format supported** FDD and TDD  
**Measurements and Displays Supported** Adjacent Channel Leakage Ratio (ACLR), Spectrum Emission Mask (SEM), Channel Power, Occupied Bandwidth, Power vs. Time showing Transmitter OFF power for TDD signals and LTE constellation diagram for Primary Synchronization Signal and Secondary Synchronization Signal with Cell ID, Group ID, Sector ID, RS (Reference Signal) Power and Frequency Error.  
**ACLR with E-UTRA bands (typical, with noise correction)** 1st Adjacent Channel 60 dB  
2nd Adjacent Channel 62 dB

**EMC pre-compliance and troubleshooting (EMCVUxx-SVPC)**

**Standards** EN55011, EN55012, EN55013, EN55014, EN55015, EN55025, EN55032, EN60601, DEF STAN, FCC Part 15, FCC Part18, MIL-STD 461G  
**Features** EMC-EMI display, Wizard to setup accessories and limit lines, Inspect, Harmonic Markers, Level Target, Compare Traces, Measure Ambient, Report generation, Re-measure Spot  
**Detectors** +Peak, Avg, Avg (of logs), Avg (VRMS), CISPR QuasiPeak, CISPR Peak, CISPR Average, CISPR Average of Logs, MIL +Peak, DEF STAN Avg, DEF STAN Peak  
**Limit lines** Up to 3 Limit Lines with corresponding margins  
**Resolution BW** Set per standard or user definable  
**Dwell time** Set per standard or user definable  
**Report format** PDF, HTML, MHT,RTF, XLSX, Image File format  
**Accessory type** Antenna, Near Field Probe, Cable, Amplifier, Limiter, Attenuator, Filter, Other  
**Correction format** Gain/Loss Constant, Gain/loss table, Antenna Factor  
**Traces** Save/recall up to 5 traces, Math trace (trace1 minus trace2), Ambient trace

**Mapping (MAPxx-SVPC)**

**Supported map types** Pitney Bowes MapInfo (\*.mif), Bitmap (\*.bmp), Open Street Maps (.osm)  
**Saved measurement results** Measurement data files (exported results)  
**Map file used for the measurements** Google Earth KMZ file

**Recallable results files (trace and setup files)** MapInfo-compatible MIF/MID files

**Playback of recorded signals (SV56)**

**Playback file type** R3F recorded by RSA306, RSA500, or RSA600  
**Recorded file bandwidth** 40 MHz  
**File playback controls** General: Play, stop, exit playback Location: Begin/end points of playback settable from 0-100%  
 Skip: Defined skip size from 73 μs up to 99% of file size  
 Live rate: Plays back at 1:1 rate to recording time  
 Loop control: Play once, or loop continuously

**Memory requirement** Recording of signals requires storage with write rates of 300 MB/sec. Playback of recorded files at live rates requires storage with read rates of 300 MB/sec.

**Inputs, outputs, interfaces, power consumption**

**RF input** Type N, female (RSA306B)  
 SMA, female (RSA306B-SMA)

**External frequency reference input** SMA, female

**Trigger/sync input** SMA, female

**Status indicator** LED, dual color red/green

**USB device port** USB 3.0 - Micro-B, can mate with locking thumbscrews

**Power consumption** Per USB 3.0 SuperSpeed requirements: 5.0 V, ≤ 900 mA (nominal)

**Physical characteristics**

Dimensions	RSA306B	RSA306B-SMA (NO SHELL)	RSA306B-SMA (With SHELL)
<b>Height</b>	31.9 mm (1.25 in)	23.37 mm (0.92 in)	31.9 mm (1.25 in)
<b>Width</b>	190.5 mm (7.5 in)	176.5 mm (6.95 in)	178.56 mm (7.03 in)
<b>Depth</b>	139.7 mm (5.5 in)	120.9 mm (4.76 in)	140.97 mm (5.55 in)

**Weight** RSA306B: 750 g (1.65 lbs)  
 RSA306B-SMA (with SHELL): 701.5 g (1.55 lbs)  
 RSA306B-SMA (NO SHELL): 571.5 g (1.26 lbs)

**Regulatory**

**Regional certifications** Europe: EN61326  
 Australia/New Zealand: AS/NZS 2064

**EMC emissions** EN61000-3-2, EN61000-3-3, EN61326-2-1

**EMC immunity** EN61326-1/2, IEC61000-4-2/3/4/5/6/8/11

## Environmental performance

### Temperature

<b>Operating</b>	-10 °C to +55 °C (+14 °F to +131 °F)
<b>Nonoperating</b>	-51 °C to +71 °C (-60 °F to +160 °F)

### Humidity (operating)

5% to 75%  $\pm$ 5% relative humidity (RH) from +30 °C to +40 °C (+86 °F to 104 °F)  
5% to 45% RH above +40 °C to +55 °C (+86 °F to +131 °F)

### Altitude

<b>Operating</b>	Up to 9,144 meters (30,000 feet)
<b>Nonoperating</b>	15,240 meters (50,000 feet)

### Dynamics<sup>2</sup>

<b>Mechanical shock, operating</b>	Half-sine mechanical shocks, 30 g peak amplitude, 11 $\mu$ s duration, three drops in each direction of each axis (18 total)
<b>Random vibration, nonoperating</b>	0.030 g <sup>2</sup> /Hz, 10-500 Hz, 30 minutes per axis, three axes (90 minutes total)

### Handling and transit<sup>2</sup>

<b>Bench handling, operating</b>	Per MIL-PRF-28800F Class 2 operating: Rotational-edge-drops of appropriate edges on appropriate sides of the equipment
<b>Transit drop, nonoperating</b>	Per MIL-PRF-28800F Class 2 nonoperating: Transit drops onto six faces and four corners of the equipment, from a height of 30 cm (11.8 in.) for a total of 10 impacts

<sup>2</sup> Not guaranteed when plastic case is removed (e.g. RSA306B-SMA NO SHELL)

## Ordering information

### Models

RSA306B	USB real time spectrum analyzer, 9 kHz - 6.2 GHz, 40 MHz acquisition bandwidth. The RSA306B requires a PC with Windows 7, Windows 8/8.1, or Windows 10, 64-bit operating system. A USB 3.0 connection is required for operation of the RSA306B. 8 GB RAM and 20 GB free drive space is required for installation of SignalVu-PC. For full performance of the real time features of the RSA306B, an Intel Core i7 4th generation processor is required. Processors of lower performance can be used, with reduced real-time performance. Storage of streaming data requires that the PC be equipped with a drive capable of streaming storage rates of 300 MB/sec.
RSA306B-SMA (SHELL)	
RSA306B-SMA (NO SHELL)	

### SignalVu-PC application-specific licenses

SignalVu-PC-SVE requires the Microsoft Windows 7, 8/8.1, or 10, 64-bit operating system. The base software is free, included with the instrument, and is also available to download from [www.tektronix.com/downloads](http://www.tektronix.com/downloads).

A variety of optional, licensed applications are available for purchase for SignalVu-PC. These licenses can be associated with and stored on either your PC or any RSA300 series, RSA500 series, RSA600 series, and RSA7100A spectrum analyzers. Licenses can be purchased as an option to your hardware, or separately as a Node-locked or a Floating license.

Contact your local Tektronix Account Manager to purchase a license. If your purchased license is not ordered as an option to your instrument, you will receive an email with a list of the applications purchased and the URL to the Tektronix Product License Web page, where you will create an account and can then manage your licenses using the Tektronix Asset Management System (AMS): <http://www.tek.com/products/product-license>.

AMS provides an inventory of the license(s) in your account. It enables you to check out or check in a license and view the history of licenses.

Optional applications are enabled by one of the following license types:

License type	Description
Node locked license (NL) purchased as an option to your instrument	<p>This license is initially assigned to a specific host id, which can be either a PC or an instrument. It can be reassociated to either a PC or another spectrum analyzer two times using Tek AMS.</p> <p>When associated with an instrument, this license is factory-installed on that instrument at the time of manufacture. It will be recognized by any PC operating with SignalVu-PC when the instrument is connected. However, the licensed application is deactivated from the PC if the licensed instrument is disconnected.</p> <p>This is the most common form of licensing, as it simplifies management of your applications.</p>
Node locked license (NL) purchased separately	<p>This license is initially assigned to a specific host id, which can be either a PC or an instrument. It can be reassociated to either a PC or another spectrum analyzer two times using Tek AMS.</p> <p>This license is delivered via email and is associated with either your PC or with an instrument when you install the license.</p> <p>This license should be purchased when you want your license to stay on your PC, or if you have an existing USB instrument on which you would like to install a license.</p>
Floating license (FL) purchased separately	<p>This license can be moved between different host ids, which can be either PCs or instruments. It can be reassociated to either a PC or another spectrum analyzer two times using Tek AMS.</p> <p>This license is delivered via email and is associated with either your PC or with an instrument when you install the license.</p> <p>This is the most flexible license and is recommended in applications where the license needs to be moved frequently.</p>

In December 2015, the license policy and nomenclature was changed for SignalVu-PC and its options.

The legacy system is no longer supported and all customers are asked to transition to the new Tektronix license management system (TekAMS) going forward. Contact Tektronix sales or technical support for transferring previously purchased legacy license(s) to the new license file system.

The following SignalVu-PC application licenses are available and add functionality and value to your measurement solution. The new license structure and the old options are shown below.

Legacy SignalVu-PC option	New application license	License type	Description
SVA	SVANL-SVPC	Node-locked	AM/FM/PM/Direct Audio analysis
	SVAFL-SVPC	Floating	
SVT	SVTNL-SVPC	Node-locked	Settling Time (frequency and phase) measurements
	SVTFL-SVPC	Floating	
SVM	SVMNL-SVPC	Node-locked	General Purpose Modulation analysis to work with analyzer of acquisition bandwidth ≤40 MHz, 5/6 Series B MSO, or MDO4000B/C
	SVMFL-SVPC	Floating	
SVP	SVPNL-SVPC	Node-locked	Pulse Analysis to work with analyzer of acquisition bandwidth ≤40 MHz, 5/6 Series B MSO, or MDO4000B/C
	SVPFL-SVPC	Floating	
SVO	SVONL-SVPC	Node-locked	Flexible OFDM analysis
	SVOFL-SVPC	Floating	
SV23	SV23NL-SVPC	Node-locked	WLAN 802.11a/b/g/j/p measurement to work with analyzer
	SV23FL-SVPC	Floating	
SV24	SV24NL-SVPC	Node-locked	WLAN 802.11n measurement (requires SV23)
	SV24FL-SVPC	Floating	
SV25	SV25NL-SVPC	Node-locked	WLAN 802.11ac measurements to work with analyzer of acquisition bandwidth ≤40 MHz, 5/6 Series B MSO, or MDO4000B/C (requires SV23 and SV24)
	SV25FL-SVPC	Floating	
SV26	SV26NL-SVPC	Node-locked	APCO P25 measurement
	SV26FL-SVPC	Floating	
SV27	SV27NL-SVPC	Node-locked	Bluetooth® measurement to work with analyzer of acquisition bandwidth ≤40 MHz
	SV27FL-SVPC	Floating	
Not available in legacy license.	SV31NL-SVPC	Node-locked	Bluetooth® 5 measurements (requires SV27)
	SV31FL-SVPC	Floating	
MAP	MAPNL-SVPC	Node-locked	Mapping
	MAPFL-SVPC	Floating	
Not available in legacy license.	SV54NL-SVPC	Node-locked	Signal survey and classification
	SV54FL-SVPC	Floating	
SV56	SV56NL-SVPC	Node-locked	Playback of recorded files
	SV56FL-SVPC	Floating	
SV60	SV60NL-SVPC	Node-locked	Return loss, VSWR, cable loss, and distance to fault (requires option 04 on RSA500A/600A)
	SV60FL-SVPC	Floating	

Table continued...

Legacy SignalVu-PC option	New application license	License type	Description
CON	CONNL-SVPC	Node-locked	SignalVu-PC connection to the 5 or 6 Series B MSO Oscilloscopes (requires opt. SV-RFVT) or MDO4000B/C Oscilloscopes
	CONFL-SVPC	Floating	
SV2C	SV2CNL-SVPC	Node-locked	WLAN 802.11a/b/g/j/p/n/ac and Connect to 5/6 Series B MSO (with opt. SV-RFVT) or MDO4000B/C to work with analyzer of acquisition bandwidth $\leq 40$ MHz
	SV2CFL-SVPC	Floating	
SV28	SV28NL-SVPC	Node-locked	LTE Downlink RF measurement to work with analyzer of acquisition bandwidth $\leq 40$ MHz
	SV28FL-SVPC	Floating	
Not available in legacy license.	SVQPNL-SVPC	Node-locked	EMI CISPR detectors
	SVQPFL-SVPC	Floating	
Not available in legacy license.	EMCVUNL-SVPC	Node-locked	EMC pre-compliance and troubleshooting (includes EMI CISPR detectors)
	EMCVUFL-SVPC	Floating	
SignalVu-PCEDU	EDUFL-SVPC	Floating	Education-only version of all modules for SignalVu-PC

## Tablet

The Panasonic FZ-G1 Toughbook tablet controller is recommended for use with the RSA306B for portable field applications. The Windows 10 version of the tablet is available for purchase from Panasonic at <https://na.panasonic.com/us/computers-tablets-handhelds/tablets/tablets/toughbook-g1> and other third party Web sites.

## Standard accessories

174-6796-xx	USB 3.0 locking cable (1 M)
063-4543-xx	SignalVu-PC software, documentation, USB key
071-3323-xx	Printed safety/installation manual (English)

## Warranties

RSA306B	3 years
RSA306B-SMA (SHELL)	3 years
RSA306B-SMA (NO SHELL)	3 years

## Service options for RSA306B and RSA306B-SMA

Opt. C3	Calibration Service 3 Years
Opt. C5	Calibration Service 5 Years
Opt. D1	Calibration Data Report
Opt. D3	Calibration Data Report 3 Years (with Opt. C3)
Opt. D5	Calibration Data Report 5 Years (with Opt. C5)
Opt. R3	Repair Service 3 Years (including warranty)
Opt. R5	Repair Service 5 Years (including warranty)

## RSA306B-SMA hardware options

NO SHELL	RSA306B-SMA sold without the black plastic outer shell
SHELL	RSA306B-SMA sold with the black plastic outer shell
MKIT	Mounting kit for mounting the RSA306B-SMA (NO SHELL option only). Available to customers in US and Canada only. Includes 6 qty standoffs, M-F, .312 HEX. 4-40 threading and medium thread locker.

## Recommended accessories

### Cables

174-6949-00	USB 3.0 locking cable, 0.5 m (half-length compared to USB cable shipped with the unit)
012-1738-00	Cable, 50 Ohm, 40 Inch, Type-N(m) to Type-N(M)
012-0482-00	Cable, 50 $\Omega$ , BNC (m) 3 foot (91 cm)

### Adapters

103-0045-00	Adapter, Coaxial, 50 Ohm Type-N(m) to Type BNC(f)
013-0410-00	Adapter, Coaxial, 50 Ohm Type-N (f) to Type-N (f)
013-0411-00	Adapter, Coaxial, 50 Ohm Type-N (m) to Type-N (f)
013-0412-00	Adapter, Coaxial, 50 Ohm, Type-N(m) to Type-N(m)
013-0402-00	Adapter, Coaxial, 50 Ohm Type-N (m) to Type-N 7/16(m)
013-0404-00	Adapter, Coaxial, 50 Ohm Type-N(m) to Type-7/16 (f)
013-0403-00	Adapter, Coaxial, 50 Ohm Type-N(m) to Type DIN 9.5(m)
013-0405-00	Adapter, Coaxial, 50 Ohm Type-N(m) to Type-DIN 9.5(f)
013-0406-00	Adapter, Coaxial, 50 Ohm Type-N(m) to Type-SMA(f)
013-0407-00	Adapter, Coaxial, 50 Ohm Type-N(m) to Type-SMA(m)
013-0408-00	Adapter, Coaxial, 50 Ohm Type-N(m) to Type-TNC(f)
013-0409-00	Adapter, Coaxial, 50 Ohm Type-N(m) to Type-TNC(m)

### Attenuators and 50/75 $\Omega$ pads

013-0422-00	Pad, 50/75 Ohm, Minimum Loss, Type-N(m) 50 Ohm to Type-BNC(f) 75 Ohm
013-0413-00	Pad, 50/75 Ohm, Minimum Loss, Type-N(m) 50 Ohm to Type-BNC(m) 75 Ohm
013-0415-00	Pad, 50/75 Ohm, Minimum Loss, Type-N(m) 50 Ohm to Type-F(m) 75 Ohm



015-0787-00	Pad, 50/75 Ohm, Minimum Loss, Type-N(m) 50 Ohm to Type-F(f) 75 Ohm
015-0788-00	Pad, 50/75 Ohm, Minimum Loss, Type-N(m) 50 Ohm to Type-N(f) 75 Ohm
011-0222-00	Attenuator, Fixed, 10 dB, 2 W, DC-8 GHz, Type-N(f) to Type-N(f)
011-0223-00	Attenuator, Fixed, 10 dB, 2 W, DC-8 GHz, Type-N(m) to Type-N(f)
011-0224-00	Attenuator, Fixed, 10 dB, 2 W, DC-8 GHz, Type-N(m) to Type-N(m)
011-0228-00	Attenuator, Fixed, 3 dB, 2 W, DC-18 GHz, Type-N(m) to Type-N(f)
011-0225-00	Attenuator, Fixed, 40 dB, 100 W, DC-3 GHz, Type-N(m) to Type-N(f)
011-0226-00	Attenuator, Fixed, 40 dB, 50 W, DC-8.5 GHz, Type-N(m) to Type-N(f)
<b>Antennas</b>	
119-6609-00	Flexible whip antenna, BNC-Male connector, PVC-coated, approximately 8 inches length. Center of sensitivity approximately 136 MHz, passband 5-1080 MHz
DF-A0047 <sup>3</sup>	Directional Antenna, 20-8500 MHz, with electronic compass and preamp, available from <a href="http://www.alarisantennas.com">www.alarisantennas.com</a>
DF-A0047-01 <sup>3</sup>	Frequency range extension for DF-A0047 directional antenna, 9 kHz-20 MHz, available only from <a href="http://www.alarisantennas.com">www.alarisantennas.com</a>
DF-A0047-C1 <sup>3</sup>	Includes DF-A0047 antenna and DF-A0047-01 extension, available only from <a href="http://www.alarisantennas.com">www.alarisantennas.com</a>
016-2107-00 <sup>3</sup>	Transit case for DF-A0047 and DF-A0047-01, comes standard with purchase of DF-A0047, separately available only from <a href="http://www.alarisantennas.com">www.alarisantennas.com</a>
119-6594-00	Yagi Antenna, 825-896 MHz, Forward Gain (over half-wave dipole): 10 dB
119-6595-00	Yagi Antenna, 895-960 MHz, Forward Gain (over half-wave dipole): 10 dB
119-6596-00	Yagi Antenna, 1710-1880 MHz, Forward Gain (over half-wave dipole): 10.2 dB
119-6597-00	Yagi Antenna, 1850-1990 MHz, Forward Gain (over half-wave dipole): 9.3 dB
119-6970-00	Magnetic mount antenna, 824 MHz to 2170 MHz (requires adapter 103-0449-00)
<b>EMC accessories</b>	
EMI-NF-PROBE	Near Field Probe set (Tekbox TBPS01)
<b>Filters, probes, demonstration board</b>	
119-7246-00	Pre-filter, general purpose, 824 MHz to 2500 MHz, Type-N (f) connector
119-7426-00	Pre-filter, general purpose, 2400 MHz to 6200 MHz, Type-N (f) connector
119-4146-00	EMCO E/H-field probes. N-BNC adapter (103-0045-00) and 3 foot BNC cable (012-0482-00) recommended for use with probe kit
E/H field probes, lower cost alternative	Available from Beehive <a href="http://www.beehive-electronics.com/">www. http://beehive-electronics.com/</a> (N-BNC adapter (103-0045-00) and 3 foot BNC cable (012-0482-00) recommended for use with probe kit)
011-0227-00	Bias-T, type N(m) RF, type N(f) RF+DC, BNC(f) Bias, 1 W, 0.5 A, 2.5 MHz-6 GHz



<sup>3</sup> Not available in China, Japan, New Zealand, Australia, Korea, Russia, Belarus, Kazakhstan



Bluetooth®



Tektronix is registered to ISO 9001 and ISO 14001 by SRI Quality System Registrar.

Product(s) complies with IEEE Standard 488.1-1987, RS-232-C, and with Tektronix Standard Codes and Formats.

Product Area Assessed: The planning, design/development and manufacture of electronic Test and Measurement instruments.

Bluetooth is a registered trademark of Bluetooth SIG, Inc.

LTE is a trademark of ETSI.

ASEAN / Australasia (65) 6356 3900  
 Belgium 00800 2255 4835\*  
 Central East Europe and the Baltics +41 52 675 3777  
 Finland +41 52 675 3777  
 Hong Kong 400 820 5835  
 Japan 81 (120) 441 046  
 Middle East, Asia, and North Africa +41 52 675 3777  
 People's Republic of China 400 820 5835  
 Republic of Korea +822 6917 5084, 822 6917 5080  
 Spain 00800 2255 4835\*  
 Taiwan 886 (2) 2656 6688

Austria 00800 2255 4835\*  
 Brazil +55 (11) 3759 7627  
 Central Europe & Greece +41 52 675 3777  
 France 00800 2255 4835\*  
 India 000 800 650 1835  
 Luxembourg +41 52 675 3777  
 The Netherlands 00800 2255 4835\*  
 Poland +41 52 675 3777  
 Russia & CIS +7 (495) 6647564  
 Sweden 00800 2255 4835\*  
 United Kingdom & Ireland 00800 2255 4835\*

Balkans, Israel, South Africa and other ISE Countries +41 52 675 3777  
 Canada 1 800 833 9200  
 Denmark +45 80 88 1401  
 Germany 00800 2255 4835\*  
 Italy 00800 2255 4835\*  
 Mexico, Central/South America & Caribbean 52 (55) 56 04 50 90  
 Norway 800 16098  
 Portugal 80 08 12370  
 South Africa +41 52 675 3777  
 Switzerland 00800 2255 4835\*  
 USA 1 800 833 9200

\* European toll-free number. If not accessible, call: +41 52 675 3777

**For Further Information.** Tektronix maintains a comprehensive, constantly expanding collection of application notes, technical briefs and other resources to help engineers working on the cutting edge of technology. Please visit [www.tek.com](http://www.tek.com).

Copyright © Tektronix, Inc. All rights reserved. Tektronix products are covered by U.S. and foreign patents, issued and pending. Information in this publication supersedes that in all previously published material. Specification and price change privileges reserved. TEKTRONIX and TEK are registered trademarks of Tektronix, Inc. All other trade names referenced are the service marks, trademarks, or registered trademarks of their respective companies.

15 Apr 2021 37W-60375-10  
[www.tek.com](http://www.tek.com)

