



Industry Standard Network Performance Analysis System

SmartBits[®] 2000

Product Overview

Spirent Communications' SmartBits 2000 (SMB-2000) has become the industry standard for measuring the performance limits of everything from an emerging technology in a development lab to the largest enterprise network. The SMB-2000 is widely used to test a variety of network devices and complex network configurations, including 10/100 Mbps Ethernet, Gigabit Ethernet, ATM, and Frame Relay.

Each SMB-2000 chassis can be configured with any combination of up to 20 single-port SmartCards. SMB-2000 test systems are completely scalable and may be grouped to support 640 ports with local or remote control over the Internet.

The SMB-2000 is Designed for:

- Network Equipment Manufacturers: Perform comprehensive performance analysis for engineering, production, and QA testing.
- Evaluation Labs: Test and certify different devices from various manufacturers to benchmark their performance.
- Telcos and ISPs: Perform end-to-end testing to check for trouble spots and weaknesses.
- Enterprise Users: Test end-to-end performance to monitor throughput and prevent overload.

SMB-2000 Features

- Accommodates a comprehensive set of powerful, technology-based SmartCards for Ethernet, ATM, and Frame Relay.
- Bundled with three PC-based software applications for comprehensive performance analysis (SmartWindow[™], SmartLib[™], and SmartApplications[™]).

- Supports a 10 Mbps Ethernet connection to a host PC.
- Provides remote control through the Internet. Can also be controlled via an RS-232 port.
- Provides GPS Support. You can remotely synchronize the timing mechanism of multiple chassis by using the external GPS kit. This allows accurate measurement of one-way latency and jitter, 100-ns accuracy time stamps, and system start/stop.
- One workstation can control up to eight SmartBits stacks (32 chassis with a total of 640 ports) via SmartLib.
- Multiple users can simultaneously access the SMB-2000.
- Includes RJ-45 expansion-in and expansion-out jacks. Accepts external 10 MHz clock signals.
- Up to 512 chassis can be synchronously connected by using SmartBits multi-chassis extension units.

Supported Applications

- AST II[™]
- SmartApplications[™]
- SmartCableModem Test[™]
- SmartFlow[™]
- SmartLib[™] Programming Library
- SmartMulticastIP[™]
- SmartSignaling[™]
- SmartTCP[™]
- SmartVoIPQoS[™]
- SmartWindow[™]
- SmartxDSL[™]
- Turn Up Connect[™]
- VAST[™]

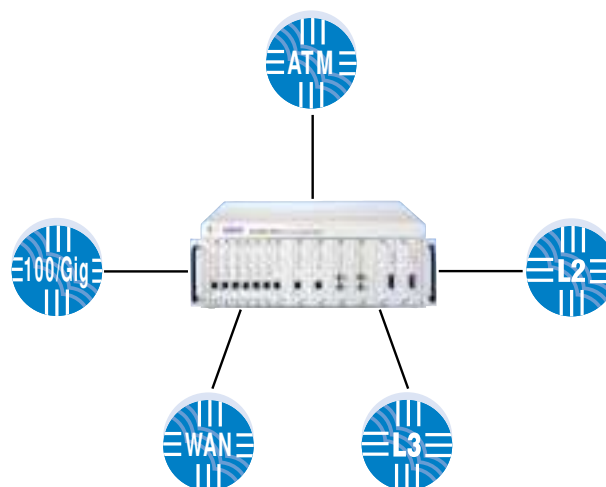
Spirent

Communications
27349 Agoura Road
Calabasas Hills, CA
91301 USA
E-mail: productinfo
@spirentcom.com

Sales Contacts:

North America
+1 800-927-2660
**Europe, Middle East,
Africa**
+33-1-6137-2250
Asia Pacific
+852-2166-8382
All Other Regions
+1 818-676-2683

www.spirentcom.com



SMB-2000 test applications



Analyze | Assure | Accelerate[™]

Supported SmartCards

Select up to 20 of the following SmartCards, in any combination, to fill the SMB-2000's 20 chassis slots. Most SmartCards require one chassis slot; ATM and Gigabit Ethernet Smart- Cards require two chassis slots each.

SmartCard	Description
AT-9xxx	ATM 1-port SmartCards (OC-3c/STM-1, OC-12c/STM-4, DS3, E1, E3, DS1, 25 Mbps)
GX-1405B	1000Base-SX Ethernet, 1-port, multi-mode, 850nm
GX-1405Bs	1000Base-LX Ethernet, 1-port, single mode, 1310nm
GX-1420B	100/1000Base Ethernet, Copper, 1-port
GX-1421A	100/1000Base-T Ethernet, GMII/MII, 1-port
ML-5710A	10Base-T Ethernet/USB, 2-port, SmartMetrics
ML-7710	10/100Base-TX Ethernet, 1-port, SmartMetrics
ML-7711/7711s	100Base-FX Ethernet, 1-port, multi-mode/single mode, SmartMetrics
SX-7210	10/100Base-TX Ethernet, MII, 1-port
SX-7410B	10/100Base-TX Ethernet, 1-port
SX-7411	100Base-FX Ethernet, 1-port
WN-3405	WAN V.35, 6/8 Mbps, Frame Relay/PPP, 1-port, SmartMetrics
WN-3415	WAN T1/FT1, Frame Relay/PPP, 1-port, SmartMetrics
WN-3420A	WAN E1/FT1, Frame Relay/PPP, 1-port, SmartMetrics
WN-3441A	WAN T1 Frame Relay/PPP, channelized 4-port, SmartMetrics
WN-3442A	WAN E1 Frame Relay/PPP, channelized 4-port, SmartMetrics
WN-3445A	WAN DS3 Frame Relay/PPP, 1-port, SmartMetrics

Requirements

- One SMB-2000 chassis and SmartCards to support the required tests.
- One Ethernet cable and one 10/100 Ethernet card installed in the PC.
- An IBM or compatible Pentium™ PC running Windows 98/2000/NT, with mouse and color monitor.

Specifications

- SmartBits chassis with 20 SmartCard slots. Controllable over the Internet or from a PC equipped with SmartWindow.
- Includes a 19" rackmount.
- Input Power: 90-264 VAC. Nominal 115 or 230 VAC, 47-63 Hz.
- Dimensions: 19"W x 6.75"H x 15"D (48.3W x 17.2H x 38.1D cm).
- Weight: 27 lbs. (12 kg) fully-loaded. Shipping weight approximately 30 lbs. (13.5 kg).
- Operating environment: 59° to 104° F (15° to 40° C); 20 to 80% relative humidity. Must have space for unimpeded airflow into the fans at the side of the chassis.
- Local stacks must be located within 1 meter of each other.

Ordering Information

SMB-2000

SmartBits 2000 (includes SmartWindow, SmartLib, and SmartApplications)

SUS-SMB

12-month Software Update Support Service (includes firmware support)



SMB-2000

Spirent Communications
 27349 Agoura Road
 Calabasas Hills, CA
 91301 USA
 E-mail: productinfo@spirentcom.com

Sales Contacts:
North America
 +1 800-927-2660
Europe, Middle East, Africa
 +33-1-6137-2250
Asia Pacific
 +852-2166-8382
All Other Regions
 +1 818-676-2683

www.spirentcom.com



©2003 Spirent Communications, Inc. All rights reserved. Specifications subject to change without notice. Spirent Communications and the Spirent logo are trademarks of Spirent plc. All other names are trademarks or registered trademarks of their respective owners and are hereby acknowledged.
 P/N 360-0010-001 Rev J, 3/03.