

REPLACEMENT COVER

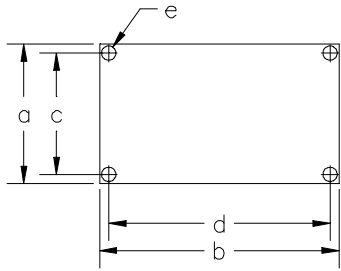


FIG. 1

MOUNTING COVER

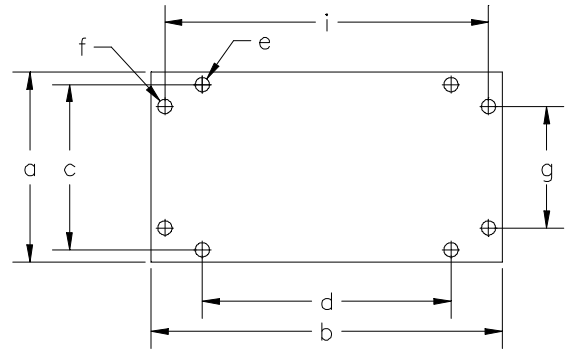


FIG. 2

REPLACEMENT COVER

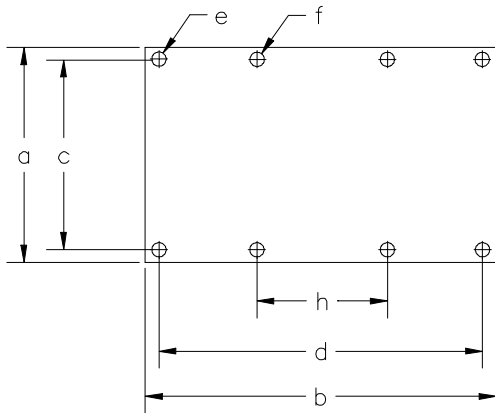


FIG. 3

MOUNTING COVER

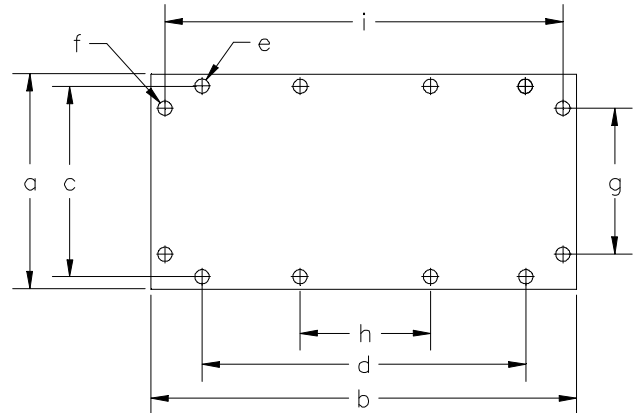


FIG. 4

Model	Fits Box Size	Fig.	Material	Material Thickness	a	b	c	d	e	f	g	h	i
4742	Miniature	1	1100-H14	.040	1.04	1.41	.843	1.22	.096				
3729	Miniature	3	6061-T6	.080	1.15	2.50	.843	2.19	.150	.100		1.22	
4245	A	1	1100-H14	.040	1.03	2.16	.843	1.97	.096				
3728	A	3	6061-T6	.080	1.15	3.25	.843	2.94	.150	.100		1.96	
4246	B	1	1100-H14	.040	1.28	2.16	1.09	1.97					
3719	B	3	6061-T6	.090	1.40	3.25	1.09	2.94	.150	.100		1.96	

All dimensions are in inches. Tolerances (except noted): .xx = ±.02" (.51 mm), .xxx = ±.005" (.127 mm).

All specifications are to the latest revisions. Specifications are subject to change without notice.

Registered trademarks are the property of their respective companies. Made in USA

6/9/99

SY/EH/LS

R:\Release\DataSheet2_Market_00\176_D_box_covers_2_01.doc

Sales: 909-469-2900 Fax: 909-629-3317
 Technical Assistance: 800-241-2060

PomonaACCESS 90176 (800) 444-6785 or (949) 253-3858
 More drawings available at www.pomonaelectronics.com

Page 1 of 2

4248	C	3	1100-H14	.080	2.50	4.12	2.25	3.87	.140			1.29	
4726	D	1	1100-H14	.063	2.48	2.99	2.25	2.63					
3958	D	2	1100-H14	.080	2.50	4.12	2.25	2.63	.125	.201	1.75		3.618
4416	E	3	1100-H14	.080	4.02	8.12	3.80	7.90	.140			2.63	
4247	F,G,H & K	3	1100-H14	.080	2.50	4.12	2.25	3.87					
3328	F,G,H & K	4	6061-T6	.080	2.50	5.25	2.25	3.87	.140	.201	1.75	1.29	3.87
4631	I	1	1100-H14	.080	4.00	4.00	3.60	3.60					
4642	I	2	1100-H14	.080	4.00	5.00	3.60	3.60	.140	.201	2.63		4.50
4658	J	1	1100-H14	.063	1.37	4.12	1.20	3.95	.096				
5198	L	1	1100-H14	.063	2.87	5.87	2.70	5.70	.096				
Model	Fits Box Size	Fig.	Material	Material Thickness	a	b	c	d	e	f	g	h	i

All dimensions are in inches. To convert to metric multiply inches by 25.4.

All dimensions are in inches. Tolerances (except noted): .xx = ±.02" (.51 mm), .xxx = ±.005" (.127 mm).

All specifications are to the latest revisions. Specifications are subject to change without notice.

Registered trademarks are the property of their respective companies. Made in USA

6/9/99

SY/EH/LS

R:\Release\DataSheet2_Market_00\176_D_box_covers_2_01.doc

Sales: 909-469-2900 Fax: 909-629-3317
Technical Assistance: 800-241-2060

PomonaACCESS 90176 (800) 444-6785 or (949) 253-3858
More drawings available at www.pomonaelectronics.com

Page 2 of 2