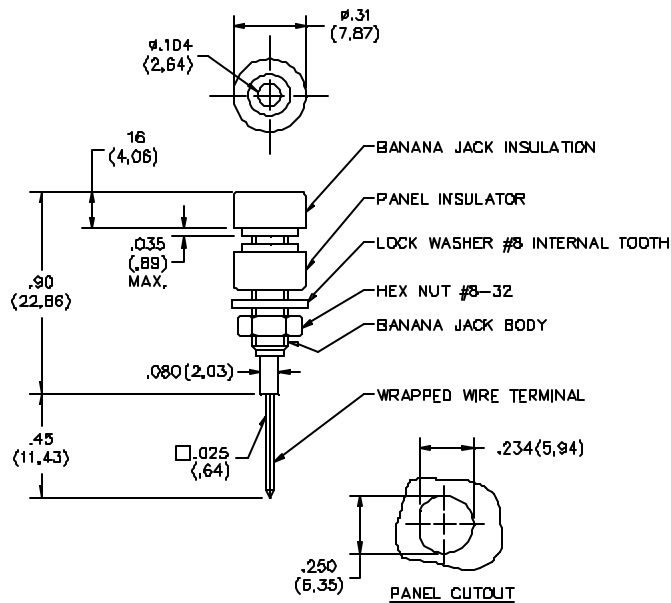


## Model 4022 Insulated Banana Jack, Miniature With Wire Wrap Terminal



### FEATURES:

- Accepts miniature banana plugs.
- Mounts in panels up to .250" thick.

### MATERIALS:

Jack: Nickel Plated Brass

Terminal: Gold Plated Phosphor Bronze

Insulation: Polycarbonate molded to Banana Jack body

Panel Insulator: Polycarbonate. Color matches color of Banana Jack insulation.

Lockwasher #8 Internal Tooth: Steel. Nickel plated per QQ-N-290 Class 2, 200/300 microinches.

Wrapped Wire Terminal: Beryllium Copper. Gold plated per MIL-G-45204, Type II Class 00 over electroless nickel per MIL-C-26074, Class 1, 200/300 microinches.

### RATINGS:

Operating Temperature: +115°C (+239°F) Max.

Operating Voltage: 1500 VDC

Current: 3 Amperes

### ORDERING INFORMATION: Model 4022-\*

Standard Colors: Available in 10 colors: -0 Black, -2 Red, -3 Orange, -4 Yellow, -5 Green, -6 Blue, -7 Violet, -8 Gray, -9 White

Sold in packages of 10 per color.

All dimensions are in inches. Tolerances (except noted): .xx = ±.02" (.51 mm), .xxx = ±.005" (.127 mm).

All specifications are to the latest revisions. Specifications are subject to change without notice.

Registered trademarks are the property of their respective companies.

Made in USA

6/9/99

SY/EH/LS

S:\Engineering\Release\DataSheets\FI\IkeDataSheet\4022\_1\_01.doc

Sales: 800-490-2361 Fax: 888-403-3360

Technical Assistance: 800-241-2060

PomonaACCESS 90223 (800) 444-6785 or (425) 446-6010

More drawings available at [www.pomonaelectronics.com](http://www.pomonaelectronics.com)

Page 1 of 1