

Keithley Rack Mount Kits Selector Guide

SELECTOR GUIDE: RACK MOUNT KITS

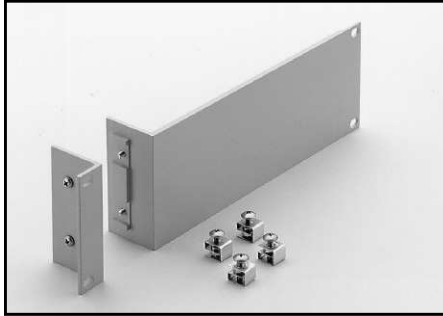
Instrument	Fixed Single	Fixed Dual	Shelf	Rear or Rail Support			
Series 2000 2182A Series 2300	Series 2500 2700 2701	6220 6221 6485	6487 6514 6517B	4288-1	4288-2	4288-5 4299-7	
Series 2100, Series 2400, 3390, 6430				4299-3	4299-4	4299-7	
Series 2260B						2260B-RMK-EIA 2260B-RMK-JIS	
Series 2268				2268-RMK-1	2268-RMK-1		
2290-5				2290-5-RMK-1	2290-5-RMK-2		
2290-10				2290-10-RMK-1	2290-10-RMK-2	4299-7	
2450, 2460, 2461, DMM7510				4299-8	4299-9 4299-10 ¹ 4299-11 ²		
Series 2600B				4299-1	4299-2		
2651A, 2657A, 708B				4299-6			
2750, System 46, System 46T							4288-7
707B				Included on 707B chassis			
Series 3700A							4288-10
4200-SCS/C or 4200-SCS/F							4200-RM
7002				7002-RMK-1			

1. Model 4299-10 mounts one Model 2450 and one Series 26XXB.

2. Model 4299-11 mounts one Model 2450 and one Series 2000, 2400, and all other 2U half-rack instruments except the Series 2200 and Series 2290 instruments.

Fixed Single Unit Rack Kit

(For mounting of one half-rack-width instrument or one full-rack-width instrument)



4288-1: For half-rack-width models. 2U (3.5 in.) high.

For use with: Series 2000, 2182A, Series 2300, 2700, 2701, 6220, 6221, 6485, 6487, 6514, 6517B, 7001.



4299-6: For full-rack-width models. 2U (3.5 in.) high.

For use with: 2651A, 2657A, 708A

4299-8: For half-rack-width models. 2U (3.5 in.) high.

For use with: 2450, 2460, 2461, DMM7510 (graphical display models only)



2290-10-RMK-1: For half-rack-width models. 2U (3.5 in.) high.

For use with: 2290-10



4299-1: For half-rack-width models. 2U (3.5 in.) high.

For use with: Series 2600B

2268-RMK-1: For half-rack-width models. 1U (1.75 in.) high.

For use with: Series 2268



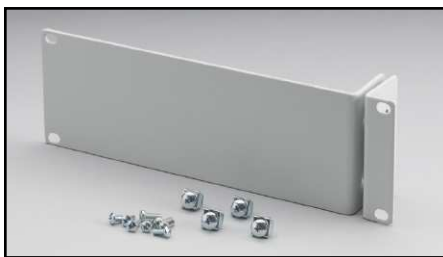
2290-5-RMK-1: For half-rack-width models. 2U (3.5 in.) high.

For use with: 2290-5



7002-RMK-1: 4U (7.0 in.) high. Full-rack model.

For use with: 7002



4299-3: For half-rack-width models. 2U (3.5 in.) high. Allows for mounting of a 2U Keysight Instrument as well.

For use with: Series 2100, Series 2400, 3390, 6430

Fixed Dual Unit Rack Kit

(For mounting two or more instruments in the width of a rack)



4288-2: For half-rack-width models.
2U (3.5 in.) high.

For use with: Series 2000, 2182A, Series 2300,
2700, 2701, 6220, 6221, 6485, 6487, 6514,
6517B, 7001



4299-4: For half-rack-width models.
2U (3.5 in.) high. Allows mounting a
2U Keithley instrument with a Keysight
instrument.

For use with: Series 2100, Series 2400,
3390, 6430

4299-9: For half-rack-width models.
2U (3.5 in.) high.

For use with: 2450, 2460, 2461, DMM7510
(graphical display models only)

4299-10: For half-rack-width models.
2U (3.5 in.) high.

For use with: 2450, 2460, 2461, DMM7510
(graphical display models only), Series 2260B

4299-11: For half-rack-width models.
2U (3.5 in.) high.

For use with: 2450, 2460, 2461, DMM7510
(graphical display models only), Series 2000,
Series 2400 or a 2U Keysight instrument

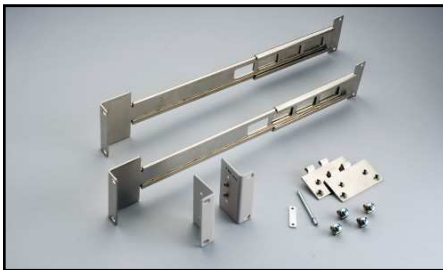
2268-RMK-2: For half-rack-width
models. 1U (1.75 in.) high.

For use with: Series 2268



2290-5-RMK-2: For half-rack-width
models. 2U (3.5 in.) high.

For use with: 2290-5



4299-2: For half-rack-width models.
2U (3.5 in.) high.

For use with: Series 2600B



2290-10-RMK-2: For half-rack-width
models. 2U (3.5 in.) high.

For use with: 2290-10

Shelf Rack Kit

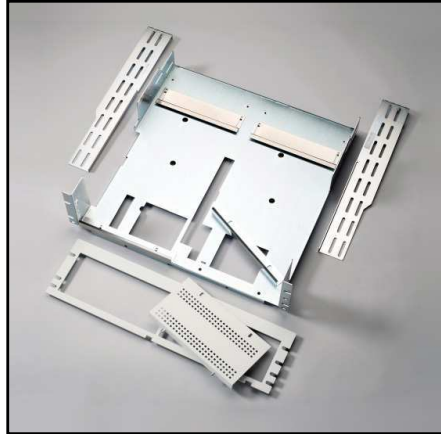
(For mounting of one or two instruments in a rack)

2260B-RMK-EIA: Supports the EIA rack standard. Allows for full-rack-width assembly configuration of sixth-, third-, and half-rack-width models. 3U (5.25 in.) high.

For use with: Series 2260B

2260B-RMK-JIS: Supports the JIS rack standard. Allows for full-rack-width assembly configuration of sixth-, third-, and half-rack-width models. 3U (5.25 in.) high.

For use with: Series 2260B



4288-5: Mounts 2U-high instruments in 3U-high rack space. 3U (5.25 in.) high.

For use with: Series 2000, 2182A, Series 2300, 2700, 2701, 6220, 6221, 6485, 6487, 6514, 6517B, 7001

4299-7 Universal Shelf Rack Kit:

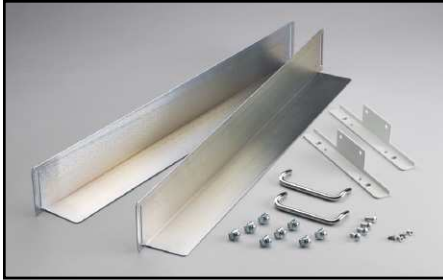
Mounts 2U-high instruments in 3U-high rack space. 3U (5.25 in.) high.

For use with: Series 2000, Series 2100, 2182A, Series 2200, Series 2300, Series 2400 (Except graphical) 2700, 2701, 6220, 6221, 6430, 6485, 6487, 6514, 6517B, 7001

RMU 2U: 3U (5.25 in.) high.

For use with: 2290-5 and 2290-10

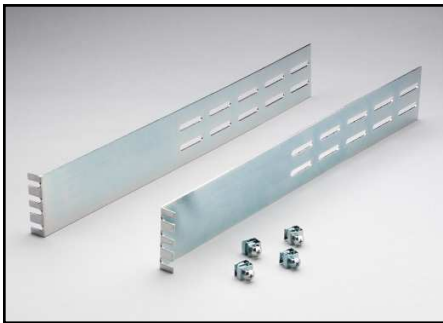
Rear/Rail Support Kts and Miscellaneous Rack Accessories



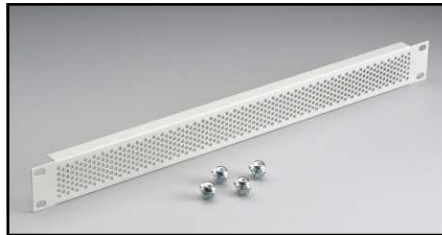
4200-RM
For use with: 4200-SCS



4288-10
For use with: Series 3700A



4288-7
For use with: 2750, System 46, System 46T



4299-5: 1U (1.75") vented panel.
For use with: Series 2600B



376-7589-xx: Cosmetic filler panel
For use with Series 2200

4200-KEY-RM
For use with: 4200-SCS

Contact Information:

Australia* 1 800 709 465
Austria 00800 2255 4835
Balkans, Israel, South Africa and other ISE Countries +41 52 675 3777
Belgium* 00800 2255 4835
Brazil +55 (11) 3759 7627
Canada 1 800 833 9200
Central East Europe / Baltics +41 52 675 3777
Central Europe / Greece +41 52 675 3777
Denmark +45 80 88 1401
Finland +41 52 675 3777
France* 00800 2255 4835
Germany* 00800 2255 4835
Hong Kong 400 820 5835
India 000 800 650 1835
Indonesia 007 803 601 5249
Italy 00800 2255 4835
Japan 81 (3) 6714 3010
Luxembourg +41 52 675 3777
Malaysia 1 800 22 55835
Mexico, Central/South America and Caribbean 52 (55) 56 04 50 90
Middle East, Asia, and North Africa +41 52 675 3777
The Netherlands* 00800 2255 4835
New Zealand 0800 800 238
Norway 800 16098
People's Republic of China 400 820 5835
Philippines 1 800 1601 0077
Poland +41 52 675 3777
Portugal 80 08 12370
Republic of Korea +82 2 6917 5000
Russia / CIS +7 (495) 6647564
Singapore 800 6011 473
South Africa +41 52 675 3777
Spain* 00800 2255 4835
Sweden* 00800 2255 4835
Switzerland* 00800 2255 4835
Taiwan 886 (2) 2656 6688
Thailand 1 800 011 931
United Kingdom / Ireland* 00800 2255 4835
USA 1 800 833 9200
Vietnam 12060128

* European toll-free number. If not accessible, call: +41 52 675 3777



Find more valuable resources at TEK.COM

Copyright © Tektronix. All rights reserved. Tektronix products are covered by U.S. and foreign patents, issued and pending. Information in this publication supersedes that in all previously published material. Specification and price change privileges reserved. TEKTRONIX and TEK are registered trademarks of Tektronix, Inc. All other trade names referenced are the service marks, trademarks or registered trademarks of their respective companies.

082517.AH 1KW-60914-0



www.valuetronics.com