

# iQA C-SERIES OPERATING MANUAL

The Intermodulation Test System For Portable Use



This document contains information which is confidential and the property of Kaelus, and which is not to be communicated to any person or company, or used in any way without the previous authorization of Kaelus.

---

an INFINIT@ company

Document Issue	IR	Description of Document Change	Date	Edited By	Authorization
A		Creation of document by Eng	23/01/2012		TN
B		CE DoC included, Step Size Corrected	11/08/2015		BN
C		Implementation of new Kaelus format	20/11/2017	SR	TL

## Precautions



### WARNING: INTERFERENCE

This instrument has been tested and found to comply with the limits for a Class A digital device, pursuant to Part 15 of the FCC Rules. These limits are designed to provide reasonable protection against harmful interference in an industrial installation. The instrument generates uses and can radiate radio frequency energy and, if not installed and used in accordance with the instructions, may cause harmful interference to radio communications. However, there is no guarantee that interference will not occur in a particular installation. If this instrument does cause harmful interference to radio or television reception, which can be determined by turning the equipment off and on, the user is encouraged to try to correct the interference by one or more of the following measures:

- Reorient or relocate the receiving antenna
- Increase the separation between the instrument and receiver
- Connect the instrument into an outlet on a circuit different from that to which the receiver is connected
- Consult the dealer or an experienced radio/TV technician for help



### WARNING: RF HAZARD

This series of instrument is capable of producing up to 50 Watts of radio frequency (RF) power in the 700 MHz to 2200 MHz frequency band. Users are reminded that proper precautions must be taken to minimize exposure to these RF fields to the recommended limits. Please pay particular care to the following areas:

- Switch off the RF power from the test equipment before removing or connecting the cables to the test port. Burns to fingers and permanent damage to eyes can result from exposure to connectors carrying high levels of RF power
- Ensure that any antennas being tested are placed so that no personnel are exposed to RF field levels in excess of the maximum exposure limits [Ref ARPANSA RPS No. 3 for Australian Users or Australia]

Also, the unit should be operated by a suitably qualified operator in order to ensure interference is not caused to other spectrum users. Radiation through an antenna requires authorization by the frequency license holder to do so.



### WARNING: HEAVY INSTRUMENT

The weight of the instrument exceeds the 18kg (40lb) guideline for manual handling by a single person (it weighs < 22.7kg/50lbs). To avoid risk of injury, an assessment should be carried out prior to handling to check individual capability, the equipment weight and the required workplace conditions, accordance with the European Directive 90/269 or equivalent National Regulations for manual handling.

### DISCLAIMER: INTERFERENCE

The instrument uses similar frequencies and power levels to several cellular telephone systems. Kaelus and its agents or distributors accept no responsibility for interference to existing communications services as a result of improper operation or misuse. If the equipment is used in a manner not specified by the manufacturer, the protection provided by the equipment may be impaired.



### WARNING: ELECTRICAL HAZARD

This equipment is supplied with a protective ground lead for AC supply safety reasons. To maintain this level of protection, the supply lead must always be connected to the supply via a socket with an earth contact. Do not remove covers as there are no user serviceable parts inside.

## GENERAL CONDITIONS OF USE

This equipment should be protected from the ingress of liquids and precipitation such as rain and snow. The equipment must be operated within the environmental conditions specified in Section 1.4. This equipment is not approved for use in hazardous atmospheres or medical applications.

## WARRANTY

Kaelus warrants all of its products and services to be free from defects in material and workmanship for a period of 60 months from first receipt into customer store. The limit of liability under this warranty shall be to repair or replace any product, or part thereof, which proves to be defective after inspection by Kaelus provided that:

- The products are returned properly packed, carriage paid, to Kaelus or their agent or distributor, at the customer's risk within the warranty period
- An adequate description of fault conditions is included with the returned products
- The products have not been misused, mishandled, overloaded, modified or repaired in anyway, or used for any purpose other than that for which they were designed

Kaelus shall be responsible for one way freight charges, from Brisbane to customer store destinations within Australia.

Repair and replacement work carried out by Kaelus on products manufactured by them, shall be warranted against the same defects re-occurring in a period of 60 months, or until the expiration of the original product warranty, which ever shall be the latter.

Kaelus shall not be liable for any direct or consequential injury, loss or damage incurred through the use, or the inability to use, any Kaelus product. Kaelus reserves the right to make design changes to Kaelus product without incurring any obligation to make the same changes to previously purchased products.

## UNPACKING

Ensure that the total number of boxes of equipment is checked off against the delivery documentation. At the same time inspect for any obvious transit damage. Should any damage be noted, notify the carrier immediately to file a transit damage claim. Do not discard any packing material until notified by the carrier or Kaelus Carefully unpack all containers and check that all items listed on the delivery documentation. Please notify Kaelus of any damaged or missing items from the shipment.

## Table of Contents

<b>1.</b>	<b>Operating Instructions</b>	<b>8</b>
1.1	Introduction	8
1.2	Functional Description	8
1.3	Features	8
1.4	Specifications	9
1.5	Construction And Layout	10
1.6	Equipment Operation – Fixed Frequency Mode	13
1.6.1	Starting the equipment	13
1.6.2	The Main Application Window	14
1.6.3	Recalling State Files	16
1.6.4	Setting up the Site Test Report	17
1.6.5	Taking an RF Measurement	18
1.6.6	Viewing a Test Report	20
1.6.7	Report Editing	23
1.6.8	Saving Reports	23
1.6.9	Switching on the Buzzer	23
1.6.10	Shutting Down the Instrument	24
1.7	Equipment Operation - Configuration Mode	25
1.7.1	Enabling the Configuration Mode	25
1.7.2	Change Configuration Mode Password	26
1.7.3	Settings	27
1.7.4	Modify a Test Tone Frequency	28
1.7.5	Modify a Test Tone Power Level	28
1.7.6	Modifying the Pass/Fail Threshold	28
1.7.7	Modify the IM Receiver Frequency	29
1.7.8	Edit Test State	30
1.7.9	Editing Test Points	31
1.7.10	Change Company Name	32
1.7.11	Applying the Factory Reset	32
1.7.12	Returning to User Mode	32

1.8	Equipment Operation - Swept Measurement Modes	32
1.8.1	Time Trace	32
1.8.2	Frequency Sweep	35
1.8.3	Spectrum Analyser Mode	38
<b>2.</b>	<b>General Detail</b>	<b>39</b>
2.1	Getting The Best From The Test Equipment	39
2.2	Safety Features	40
2.3	Accessories Kits	40
2.4	Handling And Transport	40
2.5	Cleaning The Equipment	40
2.6	Troubleshooting Guide	41
2.7	CE Declaration of Conformity	42
2.8	End of Life Statement	43
2.9	Contacts	43

## List of Figures

Figure 1	Front Panel View	10
Figure 2	External Housing	11
Figure 3	iQA Start-up Screen	13
Figure 4	Main Application Window (Default Measurement Mode)	14
Figure 5	Test State Input Window	16
Figure 6	Report Window	17
Figure 7	Test Point Label Input Screen	18
Figure 8	Default Measurement Window	19
Figure 9	Report Window	20
Figure 10	Report Browsing Window	21
Figure 11	Report Window	22
Figure 12	Report Editing Window	23
Figure 13	Shutdown Window	24
Figure 14	Configuration Mode Window	25
Figure 15	Keyboard for password input	26
Figure 16	Keypad for Power Timer input	27
Figure 17	Test Tone Warning	28
Figure 18	Calculated IM Products	29
Figure 19	Open State Screen	30
Figure 20	Changing the Test Point Label	31
Figure 21	Time Trace Measurement Window	33
Figure 22	Scaled Time Trace	34
Figure 23	Frequency Sweep Measurement Window	35
Figure 24	Frequency Step Selection Window	36
Figure 25	IM Order Selection Window	37
Figure 26	Spectrum Analyzer Measurement Window	38

# 1. Operating Instructions

## 1.1 Introduction

This manual describes the operation of the iQA (Interconnect Quality Analyzers) C-series type of portable intermodulation test instruments developed by Kaelus. The main differences between the older B-series and the new C-series instruments are as follows:

- A number of improvements were implemented to make the C-series units more robust and reliable for field use.
- The C-series instruments offer an aesthetic upgrade on the B-series instruments
- The new front panel offers a fresh, clean look. It has a recessed RF output connector with connector saver, to prolong its life
- The C-series units include upgraded front-panel PCs, allowing for better support of swept (and future) applications
- The C-series iQA also comes with RTF (Range to Fault) capability as a standard feature. The RTF feature will be discussed in more detail; in sections to follow.

In addition to significant hardware upgrades, the new application software (Version 1.6.1 and higher) includes the implementation of swept mode capability. The modes of operation included are the Time Trace, Frequency Sweep and Spectrum Analyzer modes. Units with RTF capability will have additional test modes that will be discussed in more detail; in sections to follow.

The application software upgrade is backwards-compatible on all B-series units and the majority of A-series units. Service centers will be able to advise on software upgradeability on older A-series units.

## 1.2 Functional Description

The iQA is designed to carry out reflected Passive Intermodulation (PIM) measurements in accordance with test setup one of IEC62037. PIM occurs in passive devices whenever two or more RF signals encounter non-linear electrical junctions or materials. The interference generated is mathematically related to the localized downlink frequencies and can result in a noise rise in the uplink band of one or more systems sharing the RF infrastructure. The impact of PIM on the network performance can be severe, especially for wideband systems such as CDMA, UMTS or LTE. PIM interference can lead to desensitization of the receiver causing increased dropped calls, increased access failures, pre-mature hand-offs, decreased data transmission rates and decreased system coverage and capacity. Any component in the RF path can be the source of the PIM interference including antennas, TMAs, diplexers, duplexers, surge arrestors, cables and connectors. In addition, loose mechanical connections or rusty surfaces external to the antenna system can generate PIM when subjected to high radiated RF power.

Two synthesized carriers can be set to any frequency in the transmit band. With the RF output switched on, these tones will be present at the test port and stabilized to the predefined output level. The resulting 3rd, 5th, 7th, 9th or 11th order inter modulation product is automatically calculated and the receiver is tuned to the required product. The detected voltage is processed by a microcontroller and the relevant reading shown on the display unit.

## 1.3 Features

- Highly durable, portable outdoor case
- 8.4" LCD with resistive touch screen
- Measures reflected PIM with greater than -153dBc when using two 20W carriers
- Internal detector circuits with narrow IF bandwidth provide low noise floor
- Internal carrier power monitors with ALC (Active Loop Control)
- Complete frequency agility in steps of 100 kHz to any frequency in the transmit band
- Automatic internal calculation of IM product frequencies for receiver tuning
- Onboard automatic report generation and exportation in PDF format
- All electronic systems are monitored and alarmed. This ensures that each measurement made is faultless
- The test set is capable of operating continuously into a poor VSWR load such as an open or short circuit



## 1.4 Specifications

Transmitter	
Transmit band (frequency agile over whole band)	Per product data sheet
Channel steps	100kHz
Frequency accuracy	± 5ppm (max), aging ± 1ppm (max) after first year
Power per tone (adjustable)	2 - 20W (+33 to +43dBm)
Power Accuracy/ALC Leveling (per tone)	± 0.5dB (max) across the full temperature range

Receiver	
Receiver band (100kHz steps)	Per product data sheet
Receiver noise floor	< -128dBm typical
Measurement range	-50dBm to -128dBm

System	
Measurement method	Reflected PIM
Residual PIM	< -115dBm max (< -125dBm typ)
Measurement accuracy	± 1.5dB (max)
Operating System	Windows XPE
Ports	x2 USB, x1 LAN, RF Output Port (7-16/F)

Electrical	
Mains Power	115-230V, 50/60Hz AC
AC Power	650W
Power Connector	IEC Mains Connector

Mechanical	
Dimensions	500 x 457 x 305mm
Weight	< 22.7kg
Cooling	Forced air

Environmental	
Max. Operating Temperature	-10°C to +40°C (Operating) -20°C to +60°C (Storage)
Ingress Protection (IP)	IP20 (with lid open) IP21 (with lid closed)
Relative Humidity	5% to 95% RH non-condensing
Rugged Housing	40G shock/vibrating rating
MTBF	75,000 hrs

## 1.5 Construction And Layout

The front panel and external details of the test set are shown below in Figure 1 and Figure 2 respectively. Take note that the labeling of the front panel will vary from one frequency variant to the next.



Figure 1 Front Panel View

### 1 x3 USB Ports

Used for loading state files and upgrades, and downloading reports and states. USB port # 3 is typically used for COMMS with the RTF plug-on module.

### 2. AC Power ON/OFF Switch

The green light around the AC power button will be illuminated when AC mains power is present. Pressing the AC power button will initiate the instrument's start-up procedure. During operation the instrument can be switched off by pressing this button (or by using the "Shut Down" button on the application button bar).

### 3. AC Input

IEC connector for 115V or 230V mains operation, with the fuse rated at T6.3A 250V.

### 4. LCD Touch Screen

Care should be taken at all times to prevent accidental damage to the touch screen. At no time should any item be stored within the front panel space with the lid down.

### 5. iQA Model Designator

The model designator is used to distinguish between the different iQA variants.

### 6. Monitor Port

The re-introduced monitor port is used for supplying DC to the plug-on RTF module.

### 7. Red LED (RF on indicator)

The high intensity, red LED flashes when RF power is present on the RF output Port.

## 8 RF Output Port

The RF output port is used for all measurements. On the new C-series iQAs, the RF connector is recessed into the instrument front panel, to protect the connector and to allow for a connector saver to be fitted to the instrument.

**Note:** The RJ45 LAN port has been fitted to the left-hand side of the iQA front panel. This port is to be used by service centers only.

The iQA's external housing components are identified in Figure 2 below.



Figure 2 External Housing

## 9 Lid

The lid assembly includes the following:

- **Lid Position Control:** Attached to the top of the lid, this is used to hold the lid wide open during bench-top use.
- **Lifting handle(s):** A single handle on the lid and two handles fixed on either side of the instrument allow for lifting and carrying the instrument as necessary.
- **Lid Latches:** The lid latches allow for tightly closing the lid against the main instrument case. The said latches together with the lid hinges are extremely robust and are easily able to support the bulk of the instrument's weight. Before picking up the unit, users should ensure that these latches (double action clips) are properly clipped in place when the lid is closed.

## 10 Fold-Out Legs

The fold-out legs are used to raise the front panel of the instrument when bench mounted.

## **11 Telescopic Case Handle**

The telescopic case handle allows the instrument to be towed over relatively smooth surfaces, and offers the convenience of not having to carry the bulk of the instrument's weight.

## **12 Cooling Fans**

The instrument has numerous cooling fans mounted internally to facilitate cooling. In addition there are also fans fitted to the lower sides of the enclosure (one on each side). Care should be taken to not restrict airflow when the instrument is powered on.

## **13 Rugged Polycarbonate Case**

The body of the test instrument is mounted in a solid shock-absorptive protective case, selected for its ability to withstand incidental knocks and vibrations associated with transportation to and from the BTS environment.

## **14 Wheels**

A set of wheels is recessed into the instrument case and function when the instrument is "towed" by the telescopic case handle.

## 1.6 Equipment Operation – Fixed Frequency Mode

The fixed frequency mode is the default measurement mode of the iQA. In this mode the two test frequencies remain fixed during the duration of the test. When the RF is switched on, the instantaneous PIM value will be displayed by the test equipment.

### 1.6.1 Starting the equipment

1. Connect the unit to the mains power. The green light around the AC power button will be illuminated. This indicates the presence of AC mains only.
2. Press the AC power button and the instrument will begin its start-up procedure. The user can expect the boot and start-up process to take a few seconds. The start-up screen as per Figure 3 will be shown just before the instrument's fans switch on and the application starts.

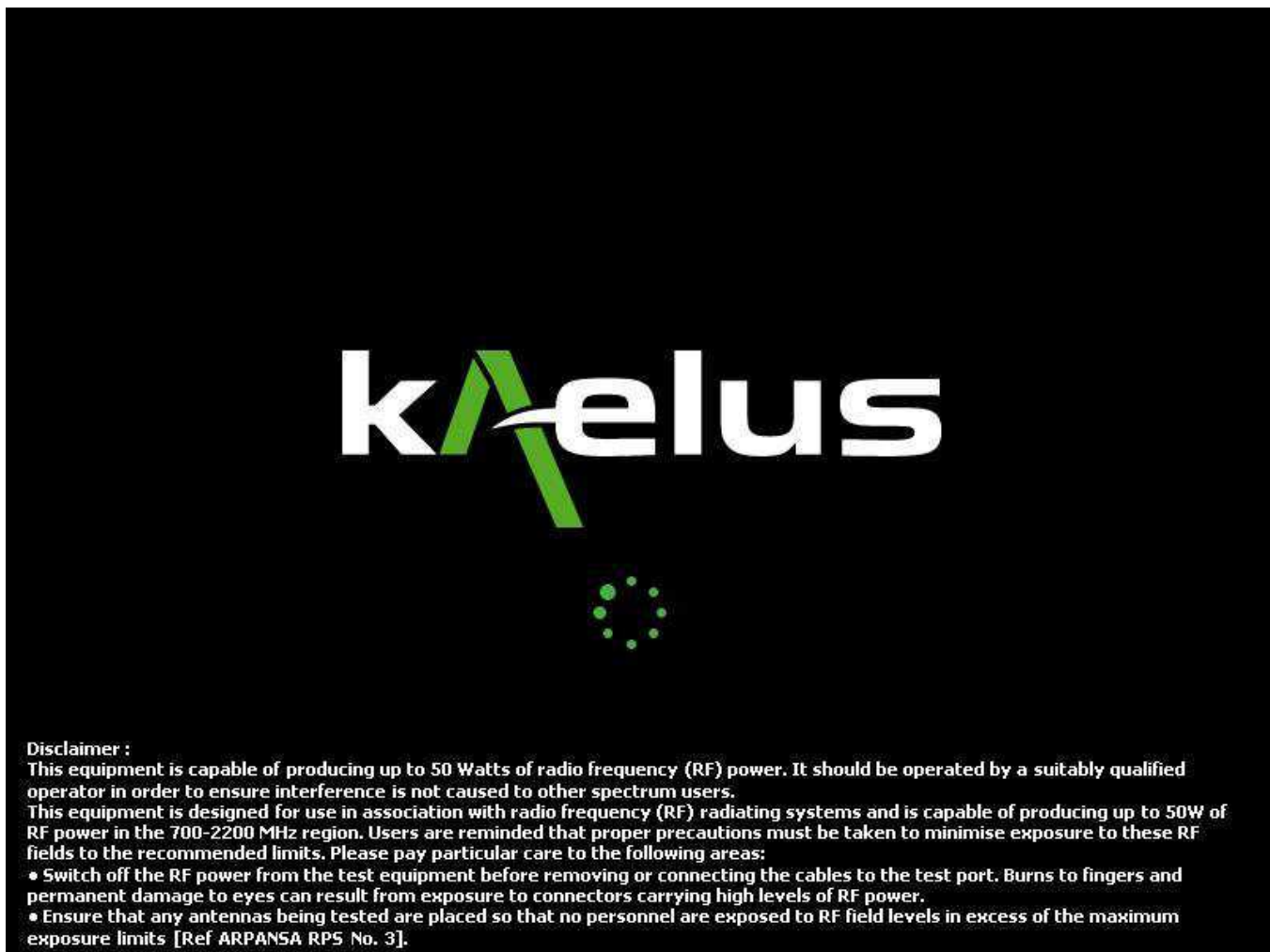


Figure 3 iQA Start-up Screen

**Note:** Users are encouraged to carefully review the safety information contained in the disclaimer on the start-up screen.



## 1.6.2 The Main Application Window

When the instrument is ready to use, it will show the main application window, in the default measurement mode.

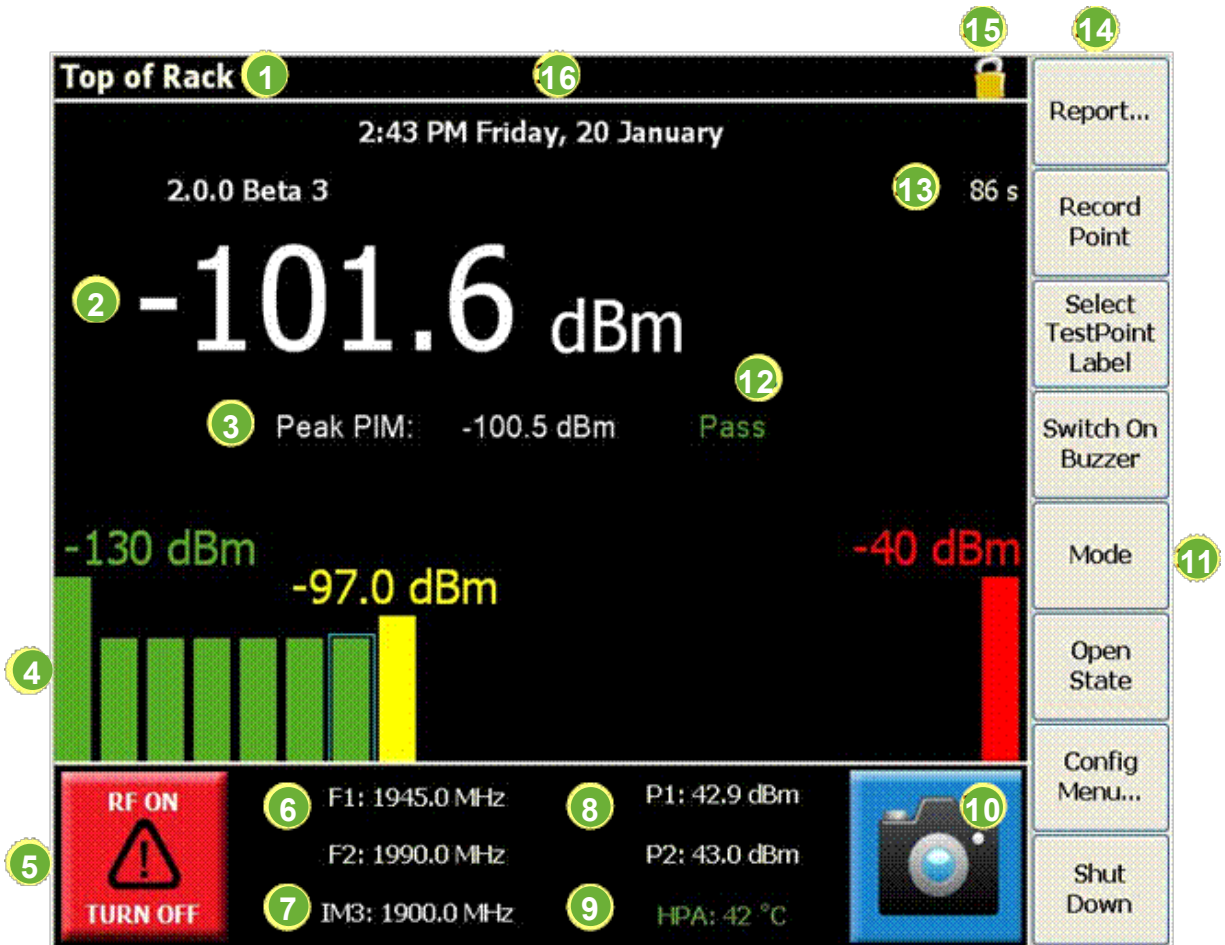


Figure 4 Main Application Window (Default Measurement Mode)

The application interface, as per the tags in the Figure 4, is discussed hereafter.

### 1 Test Point Label

The user-changeable Test Point Label appears at the top left-hand corner of the application window. This label will appear in the test report when the associated test point is recorded. The default label is “Top of Rack”.

### 2 IM Level Indicator

The IM Level Indicator shows the instantaneous IM level in numerical form. The large font size allows for easy reading of the IM level. In addition to the instantaneous IM level, the “peak” level is also displayed to the bottom-right of the instantaneous level.

### 3 Peak PIM Reading

Displays the peak PIM measurement as taken in a measurement interval.

### 4 IM Level Bar Indicator

The IM Level Bar Indicator offers an additional visual aid in showing the measured IM level and the severity thereof. In addition to showing the measurement range of the instrument, it also shows a user-adjustable IM pass/fail limit.

## 5 RF ON/OFF Button

The RF ON/OFF button is used for switching the RF either on or off. As a visual aid, this button will turn red when the RF has been switched on. In the default state (RF off) this button will be green. Additional text appears on this button to show the state of the button (RF OFF or RF ON) and what will happen when the button is pressed (TURN ON or TURN OFF).

## 6 TX Tones

TX tones are user-adjustable and can be set to any frequency within the instrument's TX band. Note though, that not all TX tone combinations will generate an IM product of the desired order, in the instrument's RX band. An error message will appear when the associated IM product does not fall within the applicable RX band and the user will have the opportunity to correct the tone placement.

## 7 IM Product

The 3rd, 5th, 7th, 9th or 11th order IM product can be manually chosen. The IM frequency is automatically calculated and takes into account the TX tone frequencies, the desired order of the IM product and the instrument's RX band.

## 8 Tone Output Powers

The default TX tone output power is 43dBm (20W) per tone, but the power is adjustable to as low as 33dBm (2W) per tone.

## 9 HPA Temperature

This temperature display area doubles as an alarm status indicator. As soon as an instrument alarm is triggered it will show an alarm message in red text in place of the temperature display. Press on the alarm message and the alarm screen will be displayed. The description of an alarm can be seen by pressing on the specific alarm indicator. The HPA temperature alarm is activated at 70°C and a soft cut-out occurs at 75°C, until temperature is restored to below 70°C.

An added feature on the application screen is the Screen Capture Button. This button will be visible when the application screen starts up. When this button is pressed a screen capture is done in a \*.png format to the D:\ drive.

## 10 Screen Capture Button

Amongst others, the screen capture feature can be used for the following:

- Graphical capturing of interference anomalies on test sites
- Graphical capturing of measurements (or traces) for training purposes
- Graphical capturing of measurements to compliment reporting

## 11 Mode Selector

The mode selector ("Next Mode") button is used for toggling between the different measurement modes. These measurement modes will be discussed in detail in sections to follow, but in summary:

- Default Mode (Fixed Frequency)

This mode is used for measuring the instantaneous IM level of a device under test. The IM level is shown in numerical form and with a corresponding IM sliding bar

- Time Trace

This mode shows a trace of the instantaneous IM level as it changes with time

- Frequency Sweep

This mode incorporates swept TX tones, for a resulting swept IM trace

- Spectrum Analyzer

This mode allows monitoring of the full RX band with TX powers on or off

## 12 Pass/Fail Limit

The Pass/Fail is a visual aid for showing when the set IM limit has been breached. The "Pass" text is green whilst the "Fail" text will be red.

## 13 Power Timer

Shows the remaining time before the output power is turned off.

## 14 Button Bar

The button bar is the main user-instrument interface.

## 15 Config Lock

The “Config Lock” icon shows whether the configuration mode is accessible or not.

## 16 Time/Date Display

User-changeable time and date display.

### 1.6.3 Recalling State Files

For quick and easy instrument configuration, a state file can be pre-loaded on a memory stick. The memory stick can be inserted into one of the USB ports and the file recalled for setting up the instrument. The setup information is stored in a \*.sta file and contains:

- Frequency information for the two test tones
- IM order selection (3rd, 5th, 7th, 9th or 11th) i.e., the frequency that the instrument's receiver will be tuned to
- Test tone RF power
- Pass/Fail thresholds
- Pre-configured test points
- Test timer setting

1. Insert the memory stick containing a state file into one of the USB interfaces.
2. Press the Open State button. A window will be displayed with a list of the states stored on the memory stick.



Figure 5 Test State Input Window

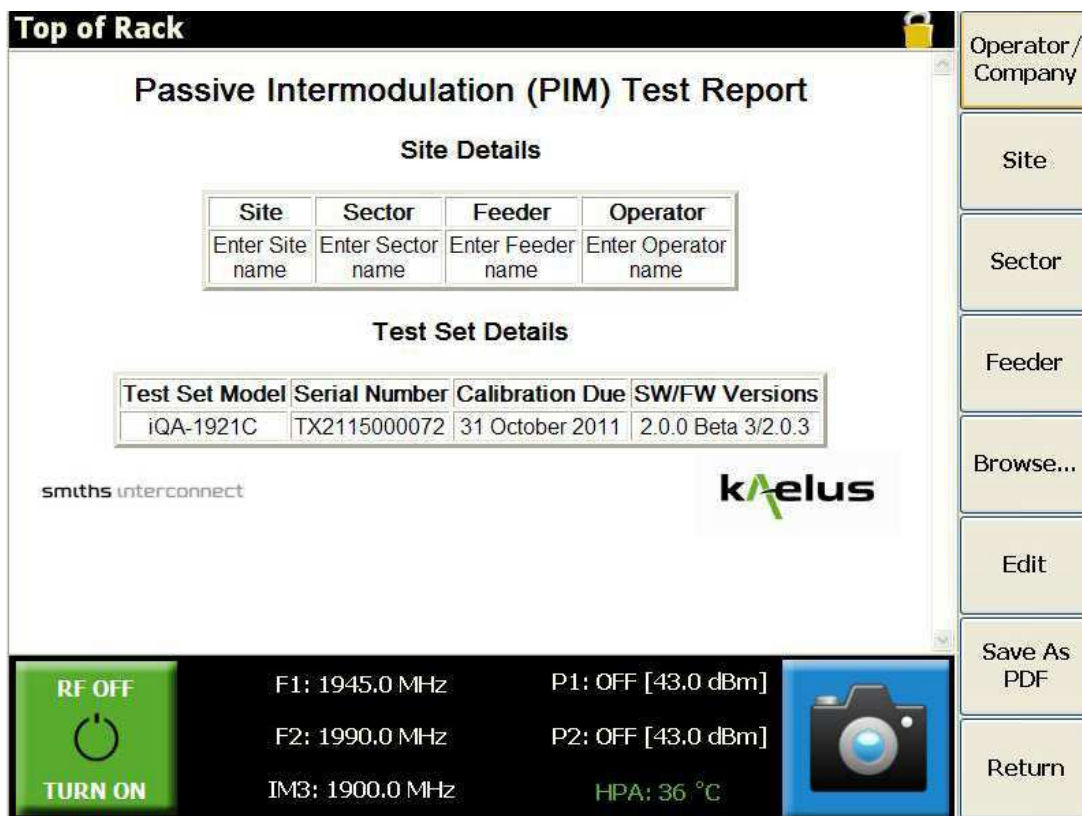
3. Select the state information required, and press OK. The instrument setup will be updated accordingly.



## 1.6.4 Setting up the Site Test Report

The site test report should be set up before any measurements are made.

1. Press the Report button. The Report window will be displayed.



**Top of Rack**


### Passive Intermodulation (PIM) Test Report


**Site Details**

Site	Sector	Feeder	Operator
Enter Site name	Enter Sector name	Enter Feeder name	Enter Operator name

**Test Set Details**


Test Set Model	Serial Number	Calibration Due	SW/FW Versions
iQA-1921C	TX2115000072	31 October 2011	2.0.0 Beta 3/2.0.3

smiths interconnect 

**RF OFF**  
  
**TURN ON**

F1: 1945.0 MHz  
F2: 1990.0 MHz  
IM3: 1900.0 MHz

P1: OFF [43.0 dBm]  
P2: OFF [43.0 dBm]  
HPA: 36 °C



**Operator/Company**

Site

Sector

Feeder

Browse...

Edit

Save As PDF

Return

**Figure 6 Report Window**

2. Press the Operator/Company Button. A keypad will be displayed.
3. Input the Operators name to be listed on the report, and press Enter.
4. Repeat the process for adding:
  - Site Name information
  - Site Sector information
  - Site Feeder information
5. Press the Return button when the report setup is complete.

## 1.6.5 Taking an RF Measurement

1. Before connecting the device under test to the Output Port, ensure that all mating surfaces are clean and free of physical defects. Ensure that the connection is adequately tightened.
2. Press the *Select Test Point Label* button. The Test Point Label window will be displayed.

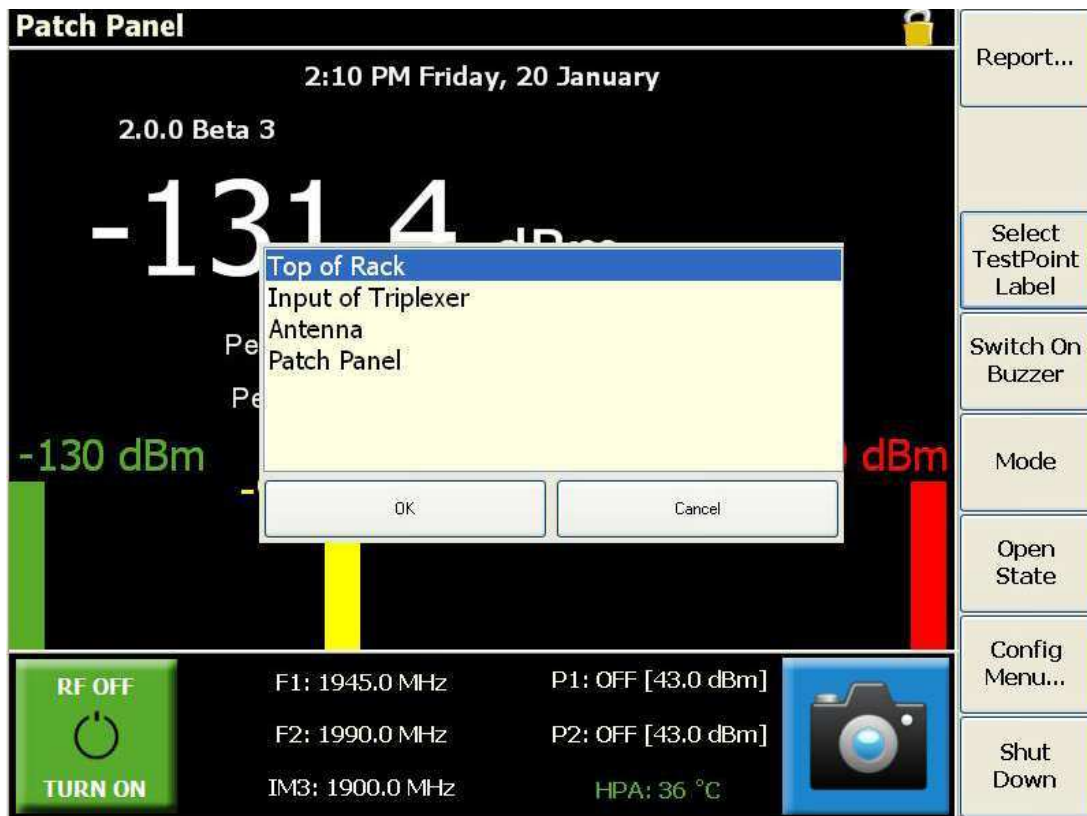


Figure 7 Test Point Label Input Screen

3. Choose the label for the point in the system at which you are doing the testing and press OK. The chosen Test Point label will be displayed at the top of the test screen, and in the report next to the associated measurements.
4. Press the green RF ON/OFF button. The button will turn RED, indicating that the RF is active. The level of the intermodulation product will be displayed on the IM level indicator and IM level bar indicator. The red RF ON LED Indicator situated immediately above the RF Output connector will flash showing RF is present. While the measurement is taking place, the instrument will take a peak measurement and indicate if the element under test has a Pass or Fail status. The 'Peak' result will, however, not be displayed until the ALC has set the output tone powers to within +/-0.5dB of the preset level.

The 'Record Test Point' button will only be visible (and active) after the peak value is displayed. The peak indication is held until the next RF power on event. Click on the Unit Indicator to toggle between dBm and dBc units.



Figure 8 Default Measurement Window

The RF power can be switched off by either of the following methods:

- Press the red **RF ON** button and it will return to green. If you want to record the peak measurement on the report before switching off the RF, press the **Record Test Point** button
- The Power Timer times out (based on the time-out period set in the configuration). Once the timer has timed out, a Save Measurement prompt is displayed. The user can save the peak result to the report by pressing **Yes**

Note: All test reports are marked with a Pass or Fail Certification stamp. The status of this stamp is determined by the results recorded when "Top of Rack" has been chosen as the test point, and a Pass will only occur when the Peak PIM reading is equal to or below the test state setting for the Pass/Fail threshold.

## 1.6.6 Viewing a Test Report

Reports are automatically saved to the **D:\Program Files\Kaelus\iQA\iQA Reports** directory, in a compressed \*.rpt format.

1. From the user screen, press the **Report** button.
2. The report screen will be displayed.

**Top of Rack**



**Passive Intermodulation (PIM) Test Report**

**Site Details**

Site	Sector	Feeder	Operator
Enter Site name	Enter Sector name	Enter Feeder name	Enter Operator name

**Test Set Details**

Test Set Model	Serial Number	Calibration Due	SW/FW Versions
iQA-1921C	TX2115000072	31 October 2011	2.0.0 Beta 3/2.0.3





RF OFF

TURN ON

F1: 1945.0 MHz  
F2: 1990.0 MHz  
IM3: 1900.0 MHz

P1: OFF [43.0 dBm]  
P2: OFF [43.0 dBm]  
HPA: 36 °C



Operator / Company  
Site  
Sector  
Feeder  
Browse...  
Edit  
Save As PDF  
Return

**Figure 9 Report Window**

Press the Browse button. The directory screen, as per Figure 10 will be displayed.

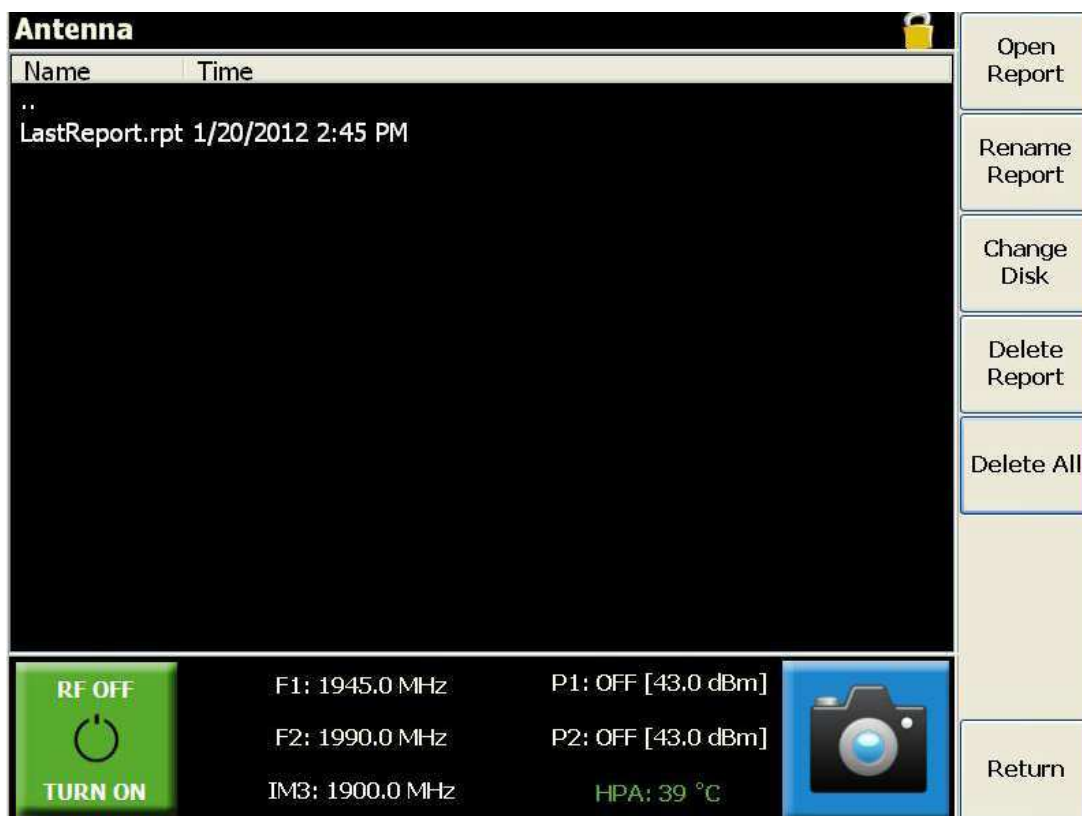


Figure 10 Report Browsing Window

Navigation in the report directory screen is done as follows:

- To move lower in the directory structure, click on '..'
  - If the report is located on another disk press the **Change Disk** button to locate it
  - To return to the report screen, press the **Return** button
  - To delete a report, select the report name and press the **Delete Report** button
3. Select the report file required, and press the **Open** button. The report will be displayed.

**D:\iQA\Reports\**
🔒

**Test Parameters**

Tone1 Frequency (MHz)	Tone2 Frequency (MHz)	IM3 Frequency (MHz)	PIM Threshold (dBm)
1945.0	1990.0	1900.0	-97.0

**Test Result**

Test Point	Time	P1 P2 (dBm)	PIM	PIM Peak	Result
Top of Rack	2012-January-20 14:44	43.0 43.0	-101.1 dBm	-100.4 dBm	Pass

**Instrument Information**

Test Set Model	Serial Number	Calibration Due	SW/FW Versions
iQA-1921C	TX2115000072	31 October 2011	2.0.0 Beta 3/2.0.3

**Test Set Details**

RF OFF

🔘

TURN ON

F1: 1945.0 MHz

F2: 1990.0 MHz

IM3: 1900.0 MHz

P1: OFF [43.0 dBm]

P2: OFF [43.0 dBm]

HPA: 38 °C

Operator/  
Company

Site

Sector

Feeder

Browse...

Edit

Save As  
PDF

Return

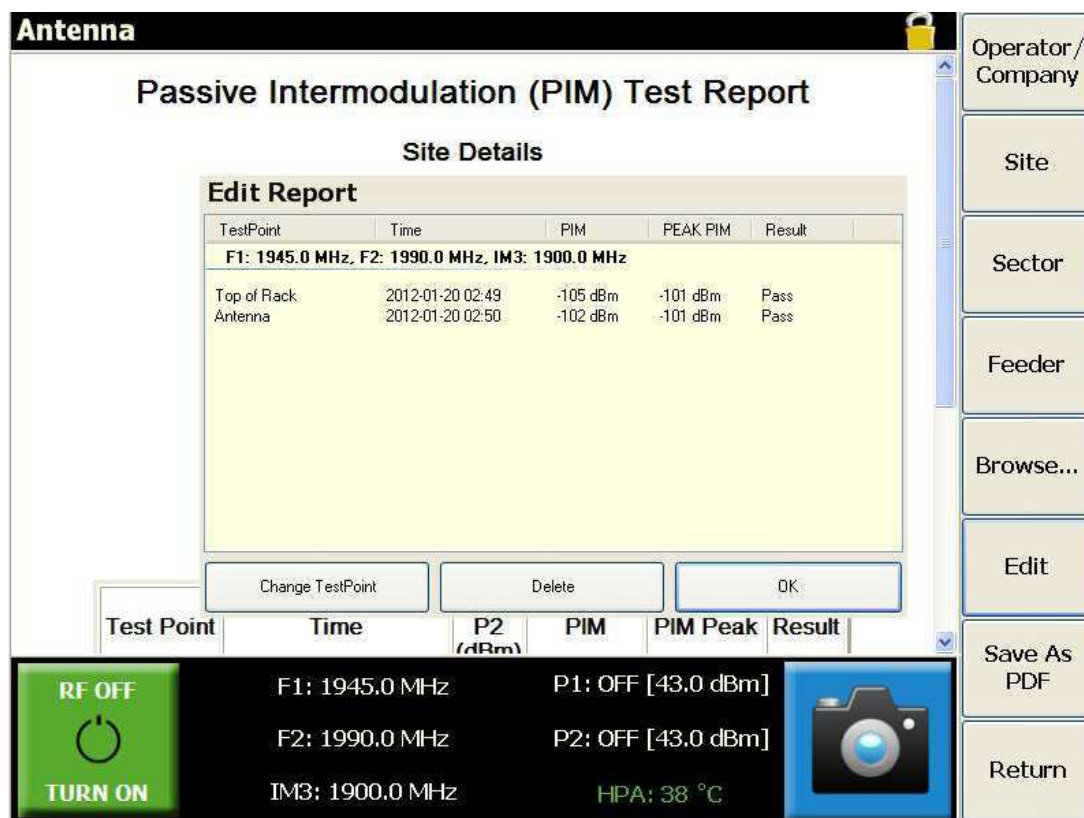
Figure 11 Report Window

4. Use the scroll bar on the right hand side to move up and down the report.
5. Press the **Return** button to go back to the main user screen.



### 1.6.7 Report Editing

A “Report Editing Button” has been added to the reporting menu. When this button is pressed, the “Edit Report” window as per Figure 12 is shown. In this window the user is allowed to select recorded points, delete them or change the test point name.



TestPoint	Time	PIM	PEAK PIM	Result
<b>F1: 1945.0 MHz, F2: 1990.0 MHz, IM3: 1900.0 MHz</b>				
Top of Rack	2012-01-20 02:49	-105 dBm	-101 dBm	Pass
Antenna	2012-01-20 02:50	-102 dBm	-101 dBm	Pass


Test Point	Time	P2 (dBm)	PIM	PIM Peak	Result
<div> <div>RF OFF</div> <div>TURN ON</div> </div> <div> F1: 1945.0 MHz  F2: 1990.0 MHz  IM3: 1900.0 MHz </div> <div> P1: OFF [43.0 dBm]  P2: OFF [43.0 dBm]  HPA: 38 °C </div> <div>  </div>					

Figure 12 Report Editing Window

### 1.6.8 Saving Reports

Test reports can be saved to a USB memory stick in PDF format. Insert the USB memory stick. Press the **Save as PDF** button to save the report in \*.pdf format on the memory stick.

### 1.6.9 Switching on the Buzzer

The iQA has an audible PIM indicator to assist the operator when they are not within viewing range of the screen. If activated, the inbuilt buzzer will emit an audible tone proportional to the PIM level (i.e. a low PIM generates a slow beep, and a high PIM will generate a faster beep). Press the **Switch On Buzzer** button to activate the audible tone. The buzzer is switched off by using the **Switch Off Buzzer** button.

### 1.6.10 Shutting Down the Instrument

1. To shut down the instrument, press the **Shut Down** button. A shut-down window will be displayed.

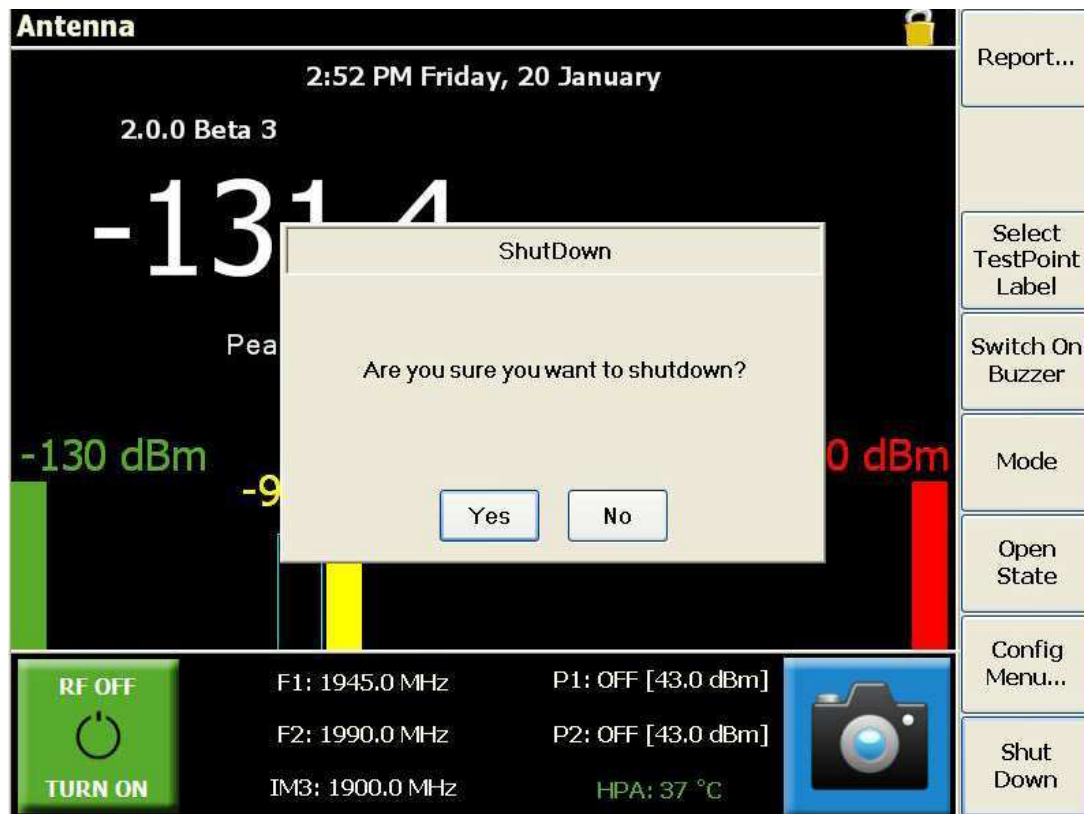


Figure 13 Shutdown Window

2. Press **Yes** to initiate the shut down procedure. The on-board computer will shut down all the internal modules automatically. The internal fans will remain active until the power cable is removed.

**Note:** Pressing the green AC Power button will prompt a windows shutdown, while pressing the shutdown button will turn off the whole unit.



## 1.7 Equipment Operation - Configuration Mode

### 1.7.1 Enabling the Configuration Mode

The setup of the instrument can be modified via password access to the configuration mode. To access the configuration mode:

1. Press the **Config Menu** button. A keyboard will be displayed.
2. Type in the password and press **Enter**. The screen will now switch to Configuration Mode, indicated by the Config Unlocked indicator at the top of the screen.



Figure 14 Configuration Mode Window

To return to User mode press the **Return** button, or the **Config Mode** indicator.

## 1.7.2 Change Configuration Mode Password

To change the password for Configuration mode access:

1. Press the **Config Password** button. A keyboard will be displayed.

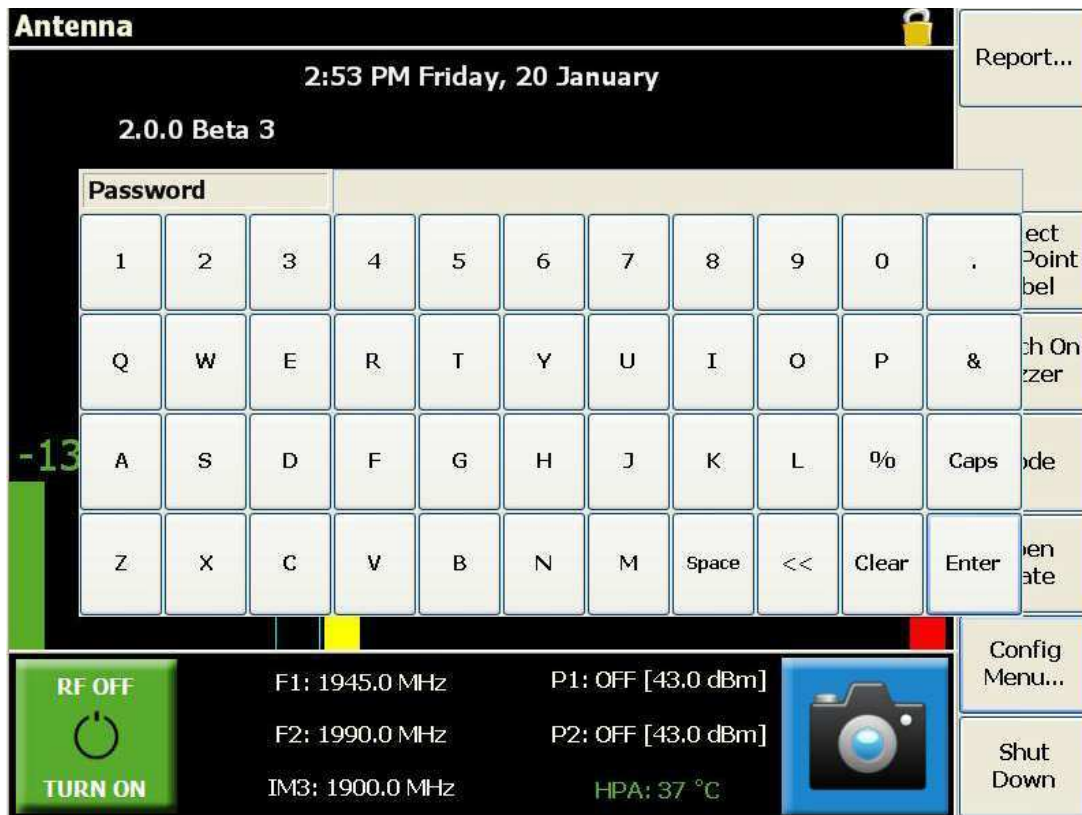


Figure 15 Keyboard for password input

2. Enter the current **Config password** and press **Enter**. A keyboard will be displayed.
3. Enter the new password and press **Enter**. A keyboard will be displayed.
4. Confirm the new password by entering it again, and press **Enter**.

### 1.7.3 Settings

The Settings window is used to adjust a number of parameters (general parameters or RTF-associated parameters).

As a general parameter, the Power Timer limit is used to control the length of time the test tones are transmitted. The timer operates in seconds, and counts down until it reaches zero, at which point the user is prompted if they would like to record the measurement to the report.

1. When the **Settings** button is pressed, a numeric keypad is displayed. (The current setting is displayed in the upper left hand corner.)



**Figure 16 Keypad for Power Timer input**

2. Input the timer period required in seconds, and press **Enter**.

In a similar fashion, the user can adjust the RL (return loss) threshold and the IM order settings, required for RTF operation. The return loss of a DUT connected to the RTF plug-on module needs to be better than the RL threshold, before RTF measurements can be made.

### 1.7.4 Modify a Test Tone Frequency

1. Press a test tone frequency field (**F1** or **F2**). A numeric keypad is displayed.
2. Input the new test tone frequency in MHz, and press **Enter**. If the user inputs a frequency that causes the IM product to be outside the instrument's receive band, a warning will be given to change the IM product ( or to change the test tone frequency).

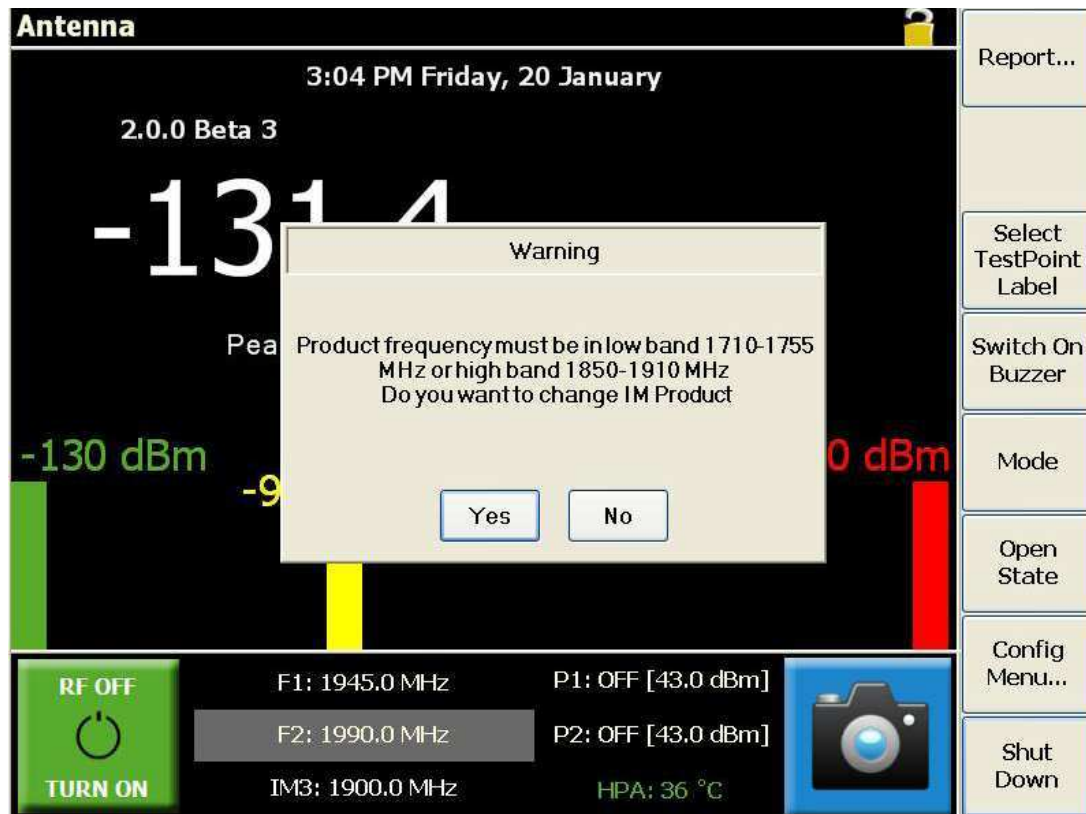


Figure 17 Test Tone Warning

### 1.7.5 Modify a Test Tone Power Level

1. Press a test tone power field (**P1** or **P2**). A numeric keypad is displayed.
2. Input the new test tone power in dBm, and press **Enter**.

### 1.7.6 Modifying the Pass/Fail Threshold

1. Press the yellow bar in the IM Level Bar indicator. A numerical key pad will be displayed.
2. Input the IM threshold level (in dBc or dBm, depending on the units the equipment is using).
3. Press **Enter**. The yellow bar will move to the new threshold level and will show a corresponding numeric tag.

### 1.7.7 Modify the IM Receiver Frequency

1. Press the **IM Product** field. The instrument will calculate the various order IM frequencies and a window will be displayed with relevant options.

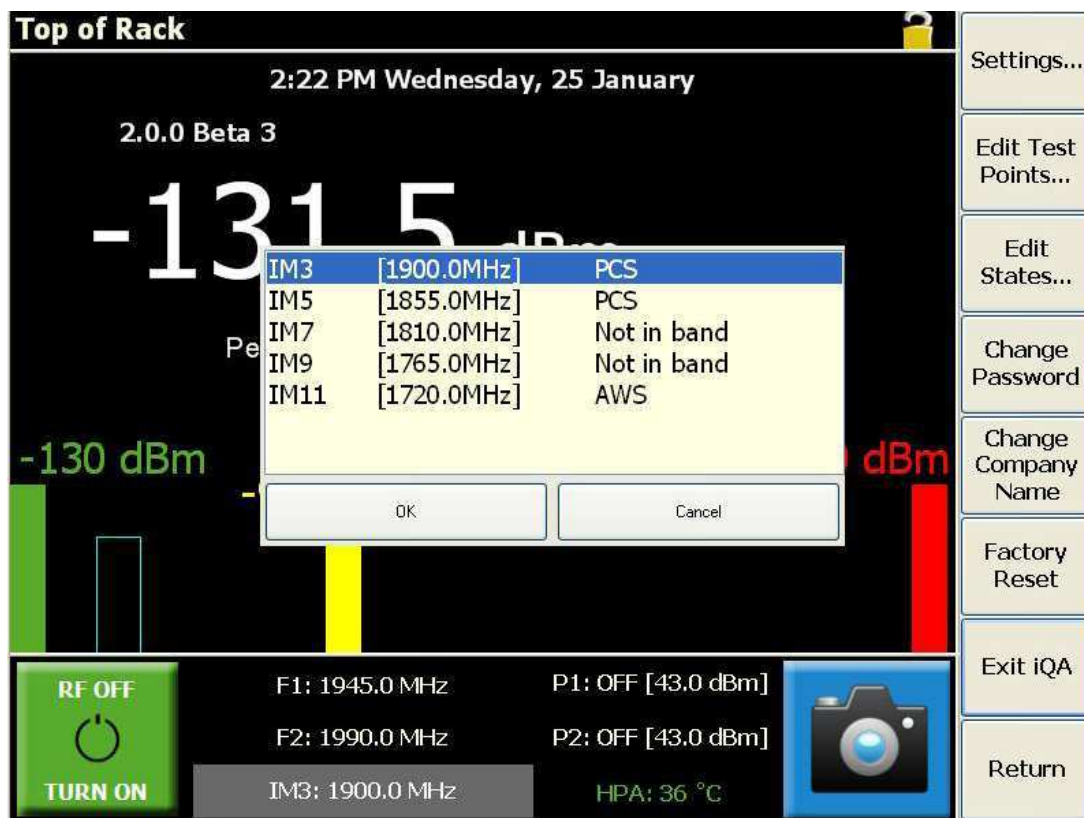


Figure 18 Calculated IM Products

2. Select the IM product to be measured and press **OK**. The IM receiver will be switched to the appropriate frequency.

### 1.7.8 Edit Test State

In Configuration mode, the user is able to create new states and recall, rename or delete states. Press the **Edit State** button and the Open State screen will be displayed.

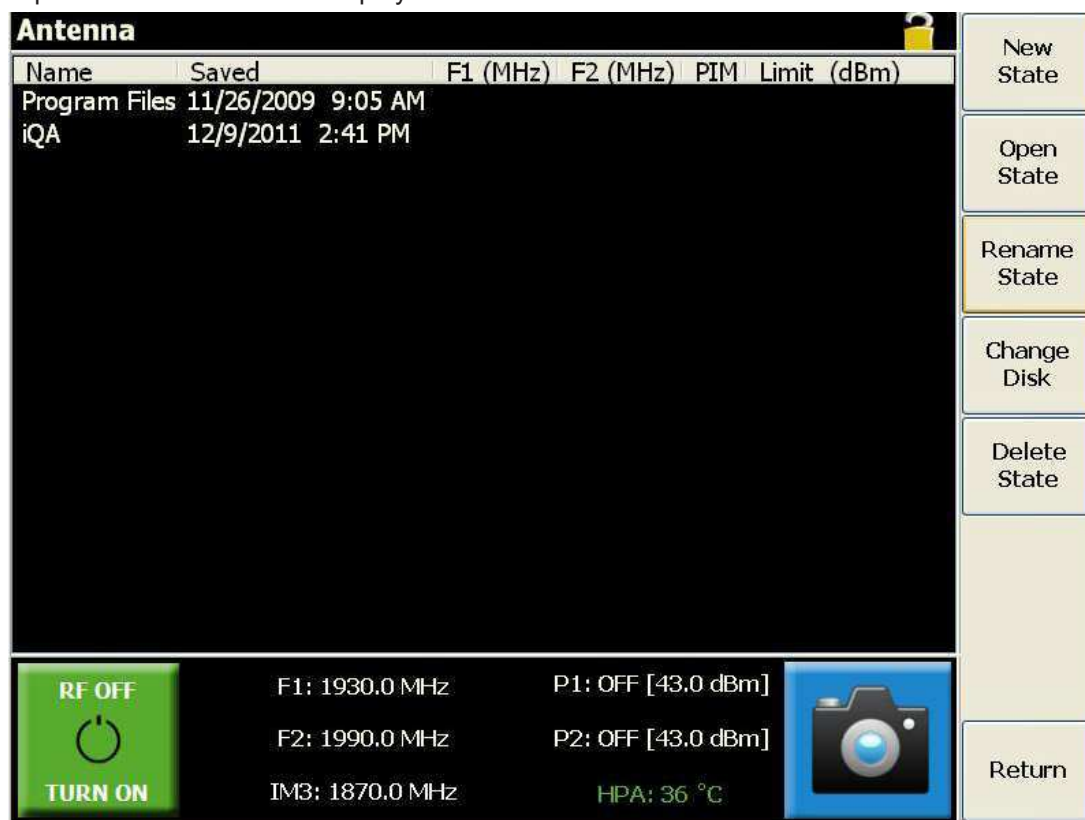


Figure 19 Open State Screen

Press the Return button to go back to the configuration screen.

#### 1.7.8.1 Recall a State

The instrument setup can be changed by uploading a new state file from the local hard disk or a memory stick. Select the file you wish to recall, and press the **Open State** button.

#### 1.7.8.2 Change Disk

To toggle through the different drives, press the **Change Disk** button. Select the drive you wish to access.

#### 1.7.8.3 Rename a State File

1. Select the file to be renamed, and press the **Rename State** button. A keyboard will be displayed.
2. Insert the new file name, and press **Enter**.

#### 1.7.8.4 Create a New State File

The user can create a new state file from:

- The current instrument configuration, or
- The State File Editor application (see section 1.7.3)

To create a new state file from the instrument, having configured it as required in section 1.6.2, press the **New State** button, and the instrument setup will be saved in a \*.sta status file.

#### 1.7.8.5 Delete a State File

To delete a state file, select the file to be deleted, and press the **Delete State** button.



## 1.7.9 Editing Test Points

Test Point labels identify the physical point in the system that the measurement is taking place. In Configuration mode the user can add, delete or modify Test Point Labels.

### 1.7.9.1 Add a Test Point Label

1. Press the **Add Label** button. A 'new label' will be displayed.
2. Select the label title at the top of the screen. A keyboard will be displayed.
3. Enter the new title and press **Enter**.

Press the **Return** button to return to the main screen.

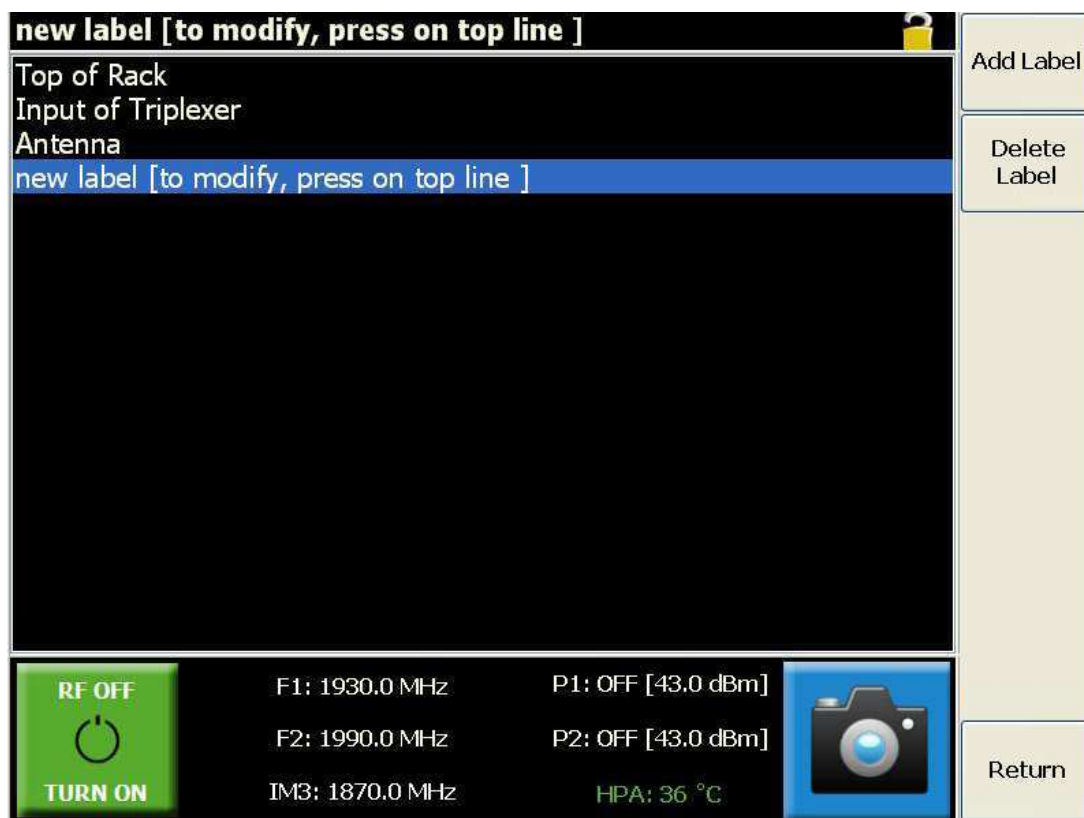


Figure 20 Changing the Test Point Label

### 1.7.9.2 Modify a Test Point Label

1. Select the label to be modified.
2. Select the label title at the top of the screen. A key board will be displayed.
3. Enter the new title and press **Enter**.
4. Press the **Return** button to return to the main screen

### 1.7.9.3 Delete a Test Point Label

1. Select the label to be deleted.
2. Press the **Delete Label** button.
3. Press the **Return** button to return to the main screen.

### 1.7.10 Change Company Name

The user is able to change the company name that appears on the test report.

1. Press the **Change Company Name** button. A keyboard will be displayed.
2. Insert the new file name, and press **Enter**.

### 1.7.11 Applying the Factory Reset

To reset the instrument to the default factory setup, press the **Factory Reset** button.

### 1.7.12 Returning to User Mode

To return to User mode press the Return button, or the **Config Mode Indicator** button.

## 1.8 Equipment Operation - Swept Measurement Modes

The swept measurement modes offer added IM measurement and diagnostics capability. The three modes offered are the Time Trace mode, Frequency Sweep mode and Spectrum Analyzer Mode.

**Note:** The user needs to take due care in ensuring that no unlicensed broadcasting of the TX carriers occurs. In this regard it is best practice to ensure that the device under test is always terminated in a low PIM cable load.

### 1.8.1 Time Trace

The Time Trace mode is particularly useful for illustrating IM performance during a set time interval and under percussive testing. The measurement trace gives a “historic view” on how the IM level changed within the set time interval. As with the default measurement mode, the TX tones remain fixed whilst the IM measurement is taken at the corresponding IM frequency. Before the IM measurement is shown, a “Waiting for power stabilization.” message will appear. This is done to allow the ALC to set the output tone powers to within +/-0.5dB of the preset level.

The features offered by this mode are as follows:

- A peak level marker highlights the peak IM level and at what time instance this measurement was taken
- The time axis is automatically scaled as per the Power Timer setting mentioned earlier
- User adjustable Pass/Fail limit line
- Measurement recording – either manual or prompted



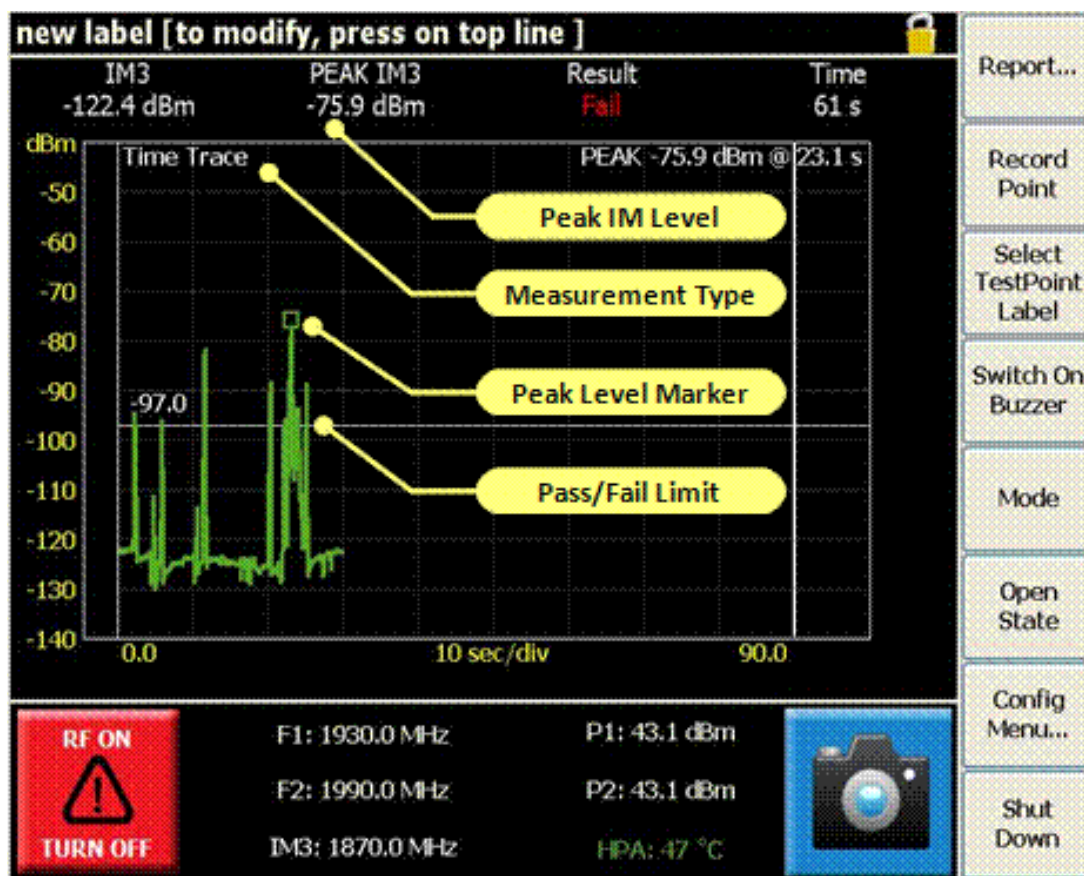


Figure 21 Time Trace Measurement Window

The foregoing figure shows a screen shot of the time trace measurement window. The shown trace is typical of a loose connector under percussive testing. If the RF is switched off before the set measurement interval expires, the user will be shown a scaled time trace per Figure 22.

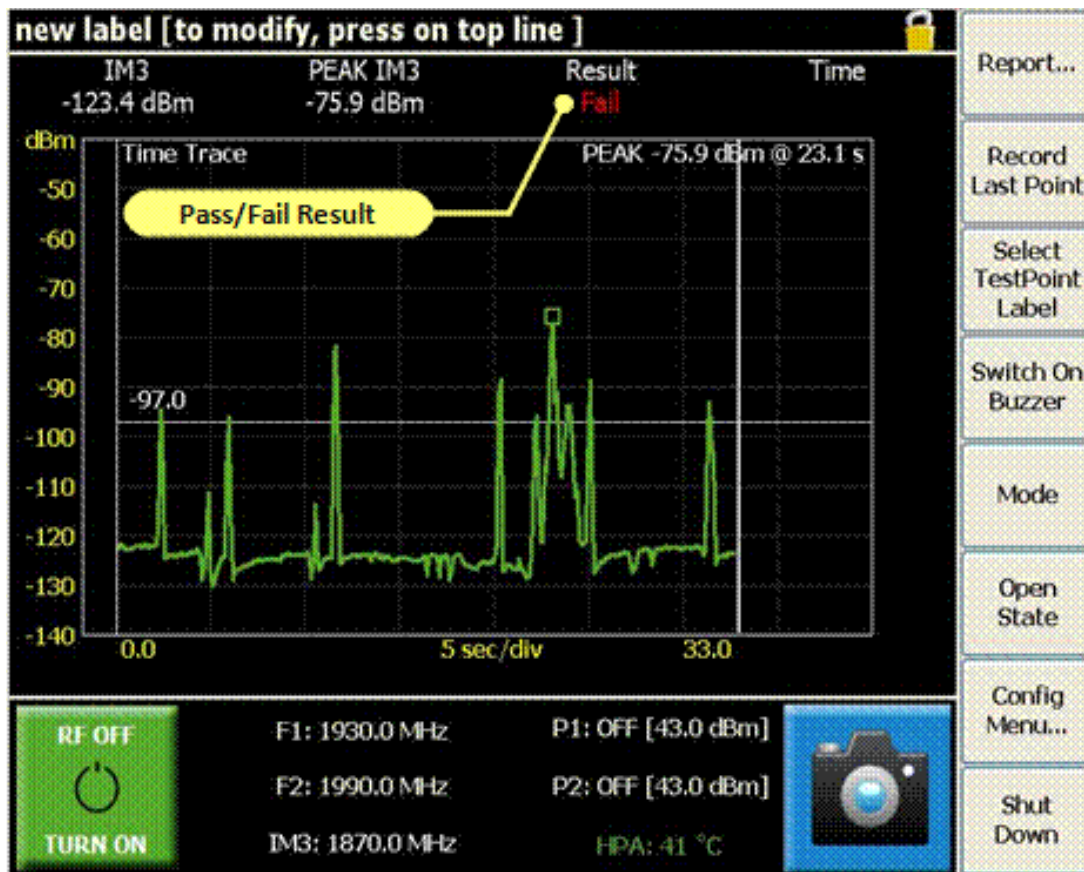


Figure 22 Scaled Time Trace

The user is at liberty to record the peak IM level of a test point at any time during the active time sweep. If the set measurement interval is allowed to expire, the Record Last Point button will remain active allowing the user to add the final result to the report.

## 1.8.2 Frequency Sweep

The Frequency Sweep mode is particularly useful for highlighting anomalies in IM performance within a specific receive band. The instrument measures the vector sum of all PIM sources present on an RF path. If two PIM sources of approximately equal magnitude are present on the RF path and are physically separated in such a way that the two signals arrive at the PIM test equipment exactly 180° out of phase, the two PIM signals will cancel and the PIM problem may not be evident. Changing the test frequencies will change the generated PIM frequency and the phase relationship between multiple PIM signals on the line, if they exist. “Sweeping” across multiple test frequency combinations provides a range of data points to accurately characterize the PIM performance of the system.

With this measurement mode, the high power tones are swept across the transmit band in such a way that their IM products fall within the receive band. To optimize speed and efficiency only those pairs of transmit frequencies which create IM products in the receive band are swept. A unique feature is the use of dual-tone sweeps: the high-frequency tone is first swept towards the stationary low-frequency tone (Sweep:1/2) and then the low-frequency tone is swept upwards toward the stationary high-frequency tone (Sweep:2/2). The progress on any dual-tone sweep is shown by the sweep number as tagged in the figure below.

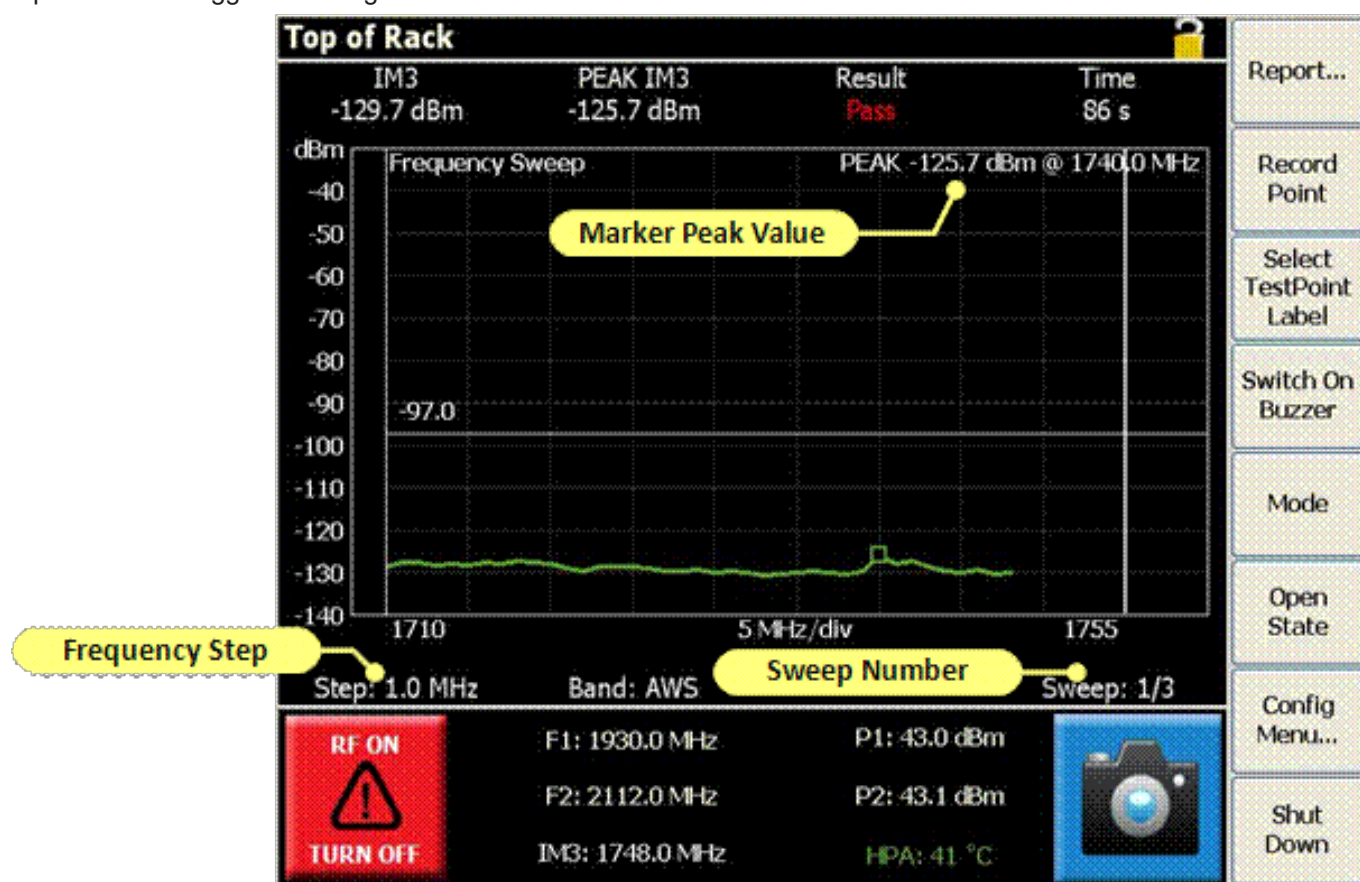


Figure 23 Frequency Sweep Measurement Window

**Note:** The instrument will complete as many dual-tone sweeps as possible within the preset time frame. Should the timer expire before the sweep, the sweep will be completed before the RF is switched off.

**Note:** The test equipment automatically changes the two test frequencies and displays the resulting IM frequency, when doing the frequency sweep.

The frequency step size is adjustable and directly impacts on the time it takes for a sweep to complete. Clicking on the frequency step label, will open a selection window with different frequency steps. The user can make a suitable selection based on the IM bandwidth in question.

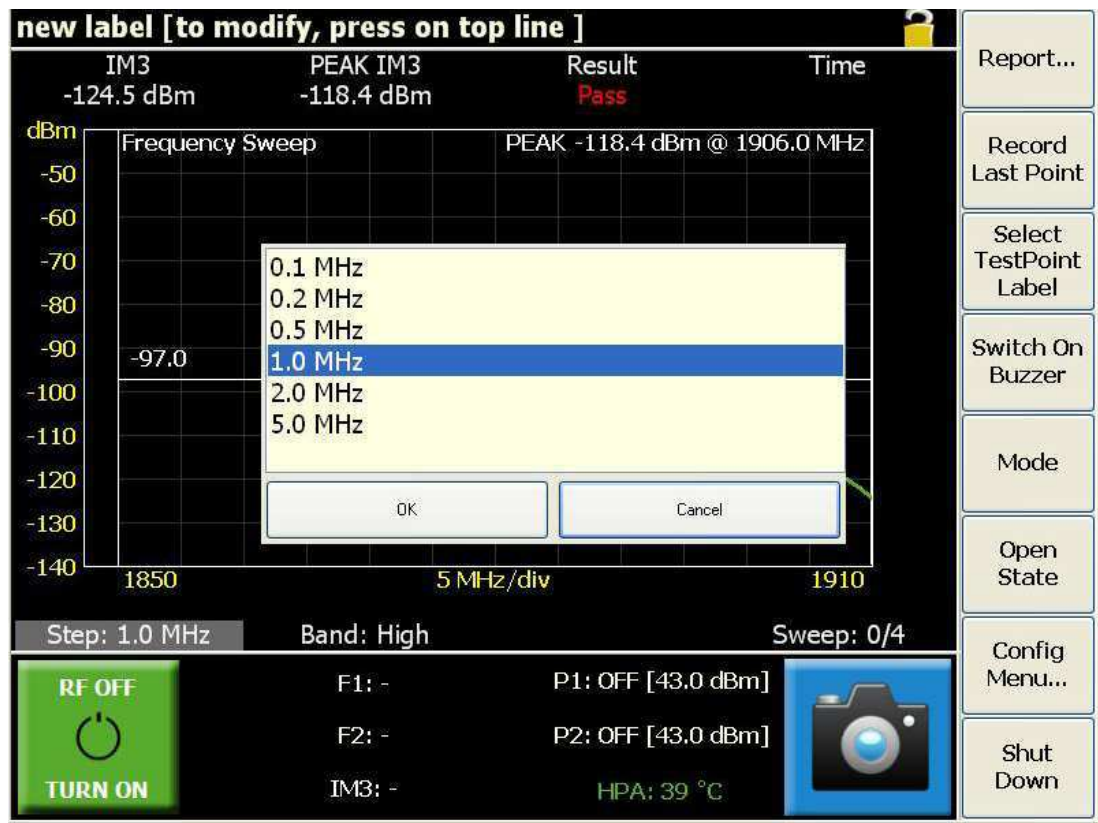
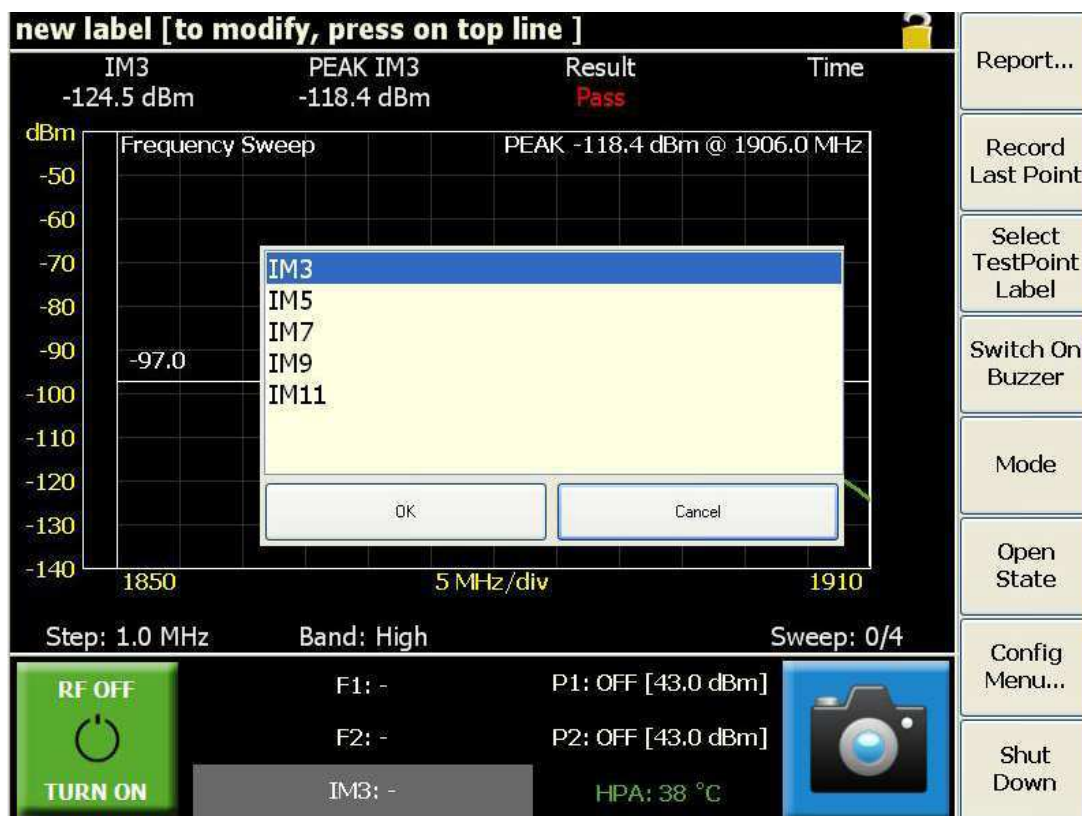


Figure 24 Frequency Step Selection Window

The figure below shows the IM order selection window. If a particular order IM band is present within the instruments receive band, it will be displayed.



**Figure 25 IM Order Selection Window**

The user is at liberty to record the peak IM level of a test point at any time during the active frequency sweep. Alternatively, if the set measurement interval is allowed to expire, the user will have the option to save the peak result to the test report.



### 1.8.3 Spectrum Analyser Mode

The Spectrum Analyzer mode offers an added analysis tool and is especially useful in detecting external interference introduced in the instrument's RX band. When the application starts up, a sweep is automatically initiated to detect interferers in the RX band of the instrument. In the default state, the two TX test tones will remain off, but the user also has the option for turning them "on". When "on" the operator will see all intermodulation products that fall within the receive band as well as wide band interference of whichever nature. A peak hold feature identifies the worst case value measured during each sweep.

The features offered by this mode are as follows:

- Adjustable sweep rate
- A peak level marker highlights the peak IM level and at what frequency this measurement was taken
- An IM Level Bar indicator corresponds with the peak level measurement
- Band select button on dual receive band units
- The option to have the RF on or off in this mode

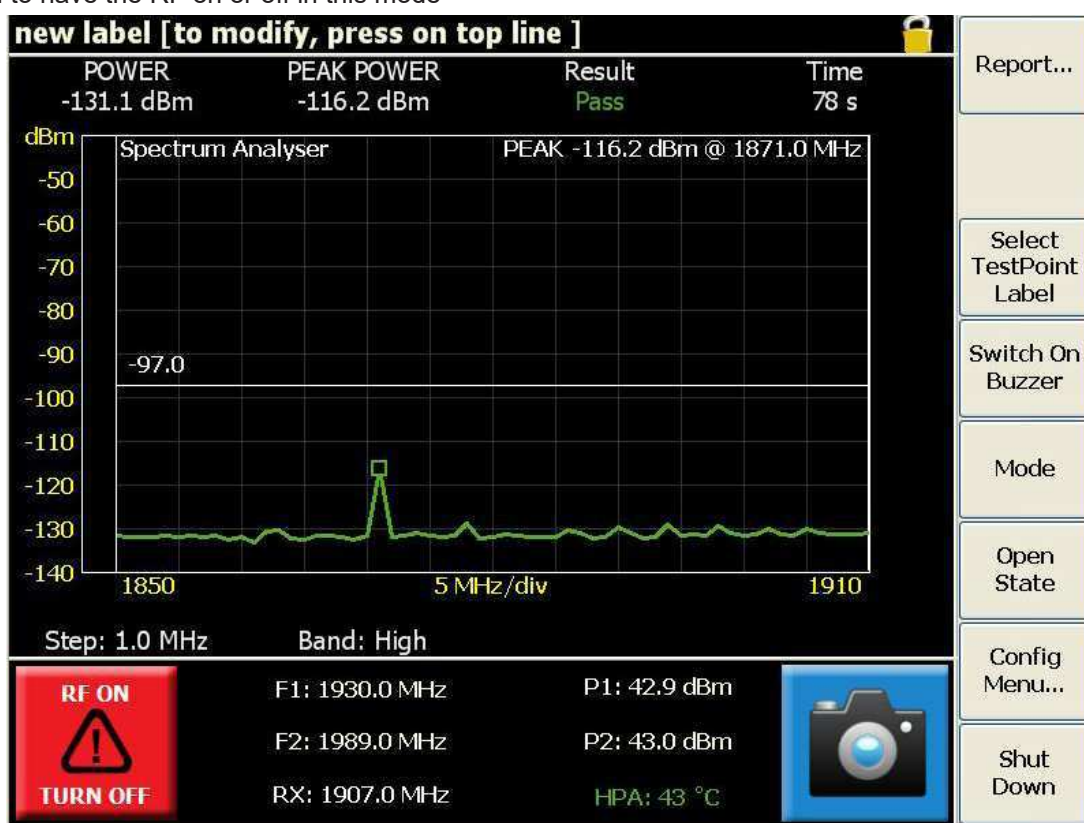


Figure 26 Spectrum Analyzer Measurement Window

The Figure 26 shows a typical spectrum analyzer trace, with an in-band interference tone at 1871MHz. An added feature in the spectrum analyzer mode is the option to switch the RF on. In practical terms, this feature allows the user to see interference in the proximity of an IM signal.

## 2. General Detail

### 2.1 Getting The Best From The Test Equipment

There are a number of practices that will allow the best to be gained from the IM test system, especially for taking PIM measurements.

#### Connector & Cable Care

- Good quality connectors and test cables are essential for making PIM and return loss measurements
- Take good care of the RF connectors on the test port and the test cable. Do avoid damaging the connectors in transit
- Remove O-rings from all test equipment adapters and test leads. This will reduce the torque required to achieve a tight, low PIM connection during test and extend the life of the connectors. (Do not remove O-rings from the site jumper cables)
- Care should be taken when mating a cable to the test port on the test set. Ensure the mating surfaces line-up correctly, and the coupling nut does not cross thread. Tighten the locking nut by hand initially, and then only do a final torque using a spanner. If a torque spanner is used, torque the 7-16 connector to a maximum of 25 Nm; otherwise ensure that the connector is firmly fastened. DO NOT allow the body of the connector to rotate. DO NOT over-torque these as this can cause permanent damage to the connector.
- Ensure that the relevant connectors are cleaned regularly as lack of cleanliness can cause PIM problems
- A cleaning kit is supplied within the accessories kit for this purpose. Clean connector mating surfaces using a cotton bud and an isopropyl wipe to remove dirt, dust & small metal filings
- The connection of the cable screen to the connector is a major cause of PIM problems, so observe connector assembly instructions closely if constructing your own
- Do not allow the body of the connector to rotate while tightening
- Keep protective caps installed on RF connectors whenever they are not in use
- RF connectors have a finite life and are typically rated for 500 mate / de-mate cycles by connector manufacturers. Longer life is achievable with proper care

#### Making PIM Measurements

- PIM measurements made by the test set are affected by all items attached to the test port. This includes the test cable, the device under test and any terminations.
- Be aware that high power resistive loads are known to have poor PIM in the region of 80 to 120 dBc for two 43 dBm tones. Choice of RF load type is important and cable loads are preferred for good PIM performance.
- Not all test cables are suitable for taking good quality PIM measurements.
- All isolators and circulators are known to be a source of poor PIM performance in the region of 100 dBc for two 43 dBm tones.
- If constructing your own cables, the major sources of PIM are in the connectors, the connection of the screen of the coax to the connector and the screen itself. Observe connector assembly instructions closely.
- PIM measurement must be taken under conditions that simulate the physical stresses that apply in the installation environment, and the recorded results can only be regarded as relevant if this stress is applied during the test sequence. International standard IEC37065 provides guidance on this matter.

#### General Tips and Caution

- Correctly terminate components to measure best return loss
- When not carrying out measurements, switch the RF Output Power OFF, for safety reasons
- When connecting or disconnecting from the measurement port, switch the RF Output Power OFF
- Do not restrict air flow of fans and vents

## 2.2 Safety Features

There are several features to enhance the tester's safety and prevent damage to the instrument. It is important that the operator is aware of these built-in features.

### 1 Auto-Power Off

The RF power is on a 'Power Timer' which is set up in the configuration menu. The maximum time the power can be on at any time is 500 Seconds. This is an added feature to prevent power being left on for an indefinite time.

### 2 2. Power Present Indicator

Whenever AC is applied the green power button surround will illuminate.

### 3 Fuses

External (T6.3A, 250V) & internal (DC bus). If the external fuse blows twice in succession or the internal fuse blows once then return the unit to the manufacturer.

### 4 Over-temperature shutdown

When the internal heat sink temperature rises above 70 °C, the unit power amplifier enters sleep mode. It is turned on automatically when the temperature drops below 65 °C.

## 2.3 Accessories Kits

Accessory kits are provided with iQAs and include the basic tools, cables, connectors, and adapters etc. to do PIM testing in the field. Users are encouraged to contact iQA service centers to discuss the specific requirements and configurations of these accessory kits.

## 2.4 Handling And Transport

- The equipment is designed for rugged handling, but it remains a precision test instrument and should be handled with care
- Do ship the equipment in a padded external box where possible
- Use a lock or external straps to secure both IM tester and accessories kit
- Airfreight is allowed as there are no dangerous items
- Transport via road freight is preferred to air freight due to care of handling

## 2.5 Cleaning The Equipment

Before commencing any cleaning, switch off the equipment and disconnect it from the supply. We recommend that the exterior surface of the equipment case is cleaned using a soft cloth moistened in water. Do not use aerosol or liquid solvent cleaners.

To prevent damage to the internal panel and instruction sheets, care should be taken not to scratch the surface during use and also when cleaning. To prevent the access of moisture and lint into the device, we recommend that the internal panels and instruction sheets should be cleaned by wiping with a slightly damp, lint-free cloth gently over the surface.



## 2.6 Troubleshooting Guide

If the remedies indicated in the chart below do not solve the problem, consult the manufacturer for further instructions.

### AC Power

#### No light on AC switch

- Insert the mains lead securely into a known active AC mains socket.
- Check & replace fuse if necessary
- If the above action does not fix the problem the test set should be returned to a Kaelus/Summitek approved service facility

### Operation

#### PIM measurements are worse than expected.

- Tester may be defective. Perform RF self check using PIM standard from accessories kit. Check PIM of an external cable load
- Confirm all test rig components are in good condition by separately testing the device or system under test
- Device under test may have poor PIM. Test a device with known PIM performance.
- RF cable may be defective. Try another RF cable or attach an external cable load directly to test port to confirm
- Benchmark against another IM tester

#### Carrier frequencies are not suitable for antenna feeders using Tower Mounted Amplifiers (TMAs).

- Bypass TMA using cable tail with known PIM. Retest PIM
- Consult manufacturer. Other frequencies can be supplied

#### Carrier frequencies cause interference or regulatory problems.

- Consult manufacturer. Other frequencies can be supplied

## 2.7 CE Declaration of Conformity

Hereby, **Kaelus Pty Ltd**  
**34 Corporate Drive**  
**Cannon Hill, QLD, 4170**  
**AUSTRALIA**

declares that the following products are in compliance with the essential requirements of Directive 2004/108/EC (EMC Directive) and Directive 2006/95/EC (LVD Directive) if installed and operated in accordance with manufacturer's instructions.

Part Number	Model Number	Description
IQ700V03A-01N	iQA700LC	Passive Intermodulation Test Set
IQ700V03A-02N	iQA700HC	Passive Intermodulation Test Set
IQ703V03C-01N	iQA703C	Passive Intermodulation Test Set
IQ790V03A-01N, V03C-01N	iQA790C	Passive Intermodulation Test Set
IQ850V03A-01N	iQA850C	Passive Intermodulation Test Set
IQ900V03A-01N	iQA900C	Passive Intermodulation Test Set
IQ901V03A-02N	iQA901C	Passive Intermodulation Test Set
IQ1800V03A-01N	iQA1800C	Passive Intermodulation Test Set
IQ1921V03A-01N	iQA1921C	Passive Intermodulation Test Set
IQ2101V03A-01N	iQA2101C	Passive Intermodulation Test Set
IQ2600V03A-01N, V03C-01N	iQA2600C	Passive Intermodulation Test Set

These products are in conformity with the following European, harmonised and published standards at the date of this declaration

Referenced EMC Standard	
EN 61326-1	EN 61000-4-4
EN 61326-2-1	EN 61000-4-5
EN 55022:2010 "Class A"	EN 61000-4-6
EN 61000-4-2	EN 61000-4-11
EN 61000-4-3	
Referenced Safety Standard	
EN 61010-1	EN 61010-030

The design, development and manufacturing of Kaelus Pty Ltd products are controlled by an ISO 9001:2008 certified Quality Management System. Authorised representation within the EU is

Kaelus, 1 Aquarius Court, Viking Way, Rosyth, Scotland, KY11 2DW

Signed by the manufacturer at 34 Corporate Drive, Cannon Hill, QLD, Australia 4170 (the location of the technical file)



## 2.8 End of Life Statement

Equipment marked with the symbol below (Crossed Out Wheelie Bin) complies with the European Parliament and Council Directive 2002/96/EC (the “WEEE Directive”) in the European Union.



Please contact your local Kaelus representative (see next section) at the end of the product's useful life to arrange its disposal in accordance with your local regulations.

## 2.9 Contacts

Kaelus has service center locations globally. Please visit [www.kaelus.com](http://www.kaelus.com) to find the service center nearest you.

When ringing, ask for IM tester support (technical or otherwise) & quote the relevant part numbers.

Send feedback to: [info@Kaelus.com](mailto:info@Kaelus.com)