

IR SnapShot™ **Portable Infrared Imaging Radiometer**



**IR SnapShot™
Model 525**

- Designed for preventive maintenance
- Standard calibration of 0-350°C (customized ranges available)



**IR SnapShot™
Model HT (High Temp)**

- Standard calibration range of 10-1200°C

DOUBLE YOUR ROI

Use the IR SnapShot for

- 1 Preventive Maintenance**
- AND**
- 2 Process Quality Management**

www.infraredsolutions.com



Prevent Downtime

Infrared imaging identifies bad battery cells in an air traffic control emergency backup system, preventing a catastrophic failure.



Reduce Energy Costs

Infrared imaging helps ensure wire insulation and electric load balances are proper to maximize efficient energy use.



Maintain Quality

Prevent your process from drifting by comparing thermal images

- Proven Technology
- First affordable radiometric camera
- Rugged design
- Easy to use (no special training required)
- Includes analysis software (no licensing limitations)



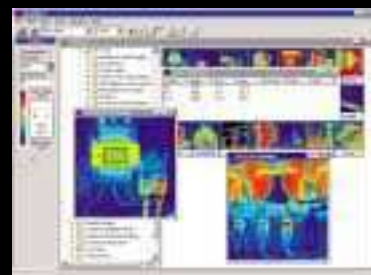
IR SnapShot™ Portable Infrared Imaging Radiometer

Specifications

Performance	
Detector	Uncooled Thermoelectric 120 element linear array
Detector Size	50 µm square on 55 µm centers
Spectral Band	8 µm to 12 µm NETD 0.1°C @ 30°C
Image Scan Time	<1.5 seconds
System Dynamic Range	16 bits with 12 bits usable
Accuracy	2°C or 2% of reading
Measurement Temperatures	Model 525: 0 to 350°C, custom from -30°C to 350°C and 0°C to 600°C Model HT: 10-1200°C
Operating Temperature	0 to 40°C, custom 0 to 50°C
Functions	Focus, snap, store, scan, recall, hot spot, frame average, histogram and setup menu
Setup Options	Emissivity, background temperature, temperature units, color palettes, autoscale and fixed ranges
Display and Image Storage	
Digital Display	4.0 inch color LCD
Digital Storage Medium	16MB Compact Flash
IR SnapView™ Software	
Image File Format	Proprietary (isi) format; can be output as Microsoft® Word® compatible JPG, PCX, BMP format
Standard Optics	
20mm f/0.8 Germanium	Field of View: 18.7° horizontal and vertical
Interfaces	
Communication	RS-232, 300 to 115K baud selectable
Video Output	Selectable NTSC or PAL
Electrical	
Battery	NiCd, 3 AH, estimated 90 minutes battery life
L x W x H	9.4 x 3.9 x 5.1 inches
Weight (with lens and battery)	4.4 LB
Standard Equipment	
<ul style="list-style-type: none"> • IR SnapView™ Image Analysis Software for Windows® • 3 AH Camcorder Battery • Battery Charger • Heavy Duty Carrying Case • 16MB ATA Compact Flash Card with PCMCIA Adapter • Padded Neck Strap • Video Cable • User Manual 	
Optional Equipment	
<ul style="list-style-type: none"> • 50mm Lens • 10.5mm Lens • Laser Pointer Assembly • Sun Shield • AC/DC Power Adapter • DC/DC Converter • 14.4 AH Battery Belt • Remote Operations Software 	

www.infraredsolutions.com

©2002 Infrared Solutions Inc. SnapShot and SnapView are trademarks of Infrared Solutions Inc.
All other trademarks and registered trademarks are property of their respective owners. All rights reserved.



IR SnapView™ Windows® Software

IR SnapView (included) provides all of the tools you need to archive, organize and analyze your infrared images. Draw regions of interest and create custom Microsoft® Word® reports to document your heat-related problems. Compare "before" and "after" images to ensure the problem has been fixed.

**Industrial Precision
Instruments Pty Ltd**

www.ipi-infrared.com
(03) 9872 5055 **phone**
(03) 9872 6055 **fax**

15/634-644 Mitcham Road
Mitcham VIC 3132



**INFRARED
SOLUTIONS**