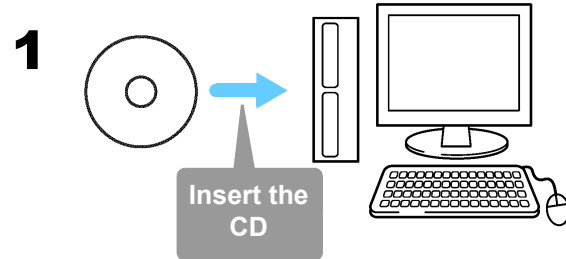


5 Importing and Displaying Data on a Computer

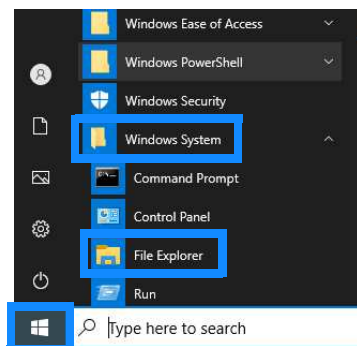
1

Installing the PC Application Program

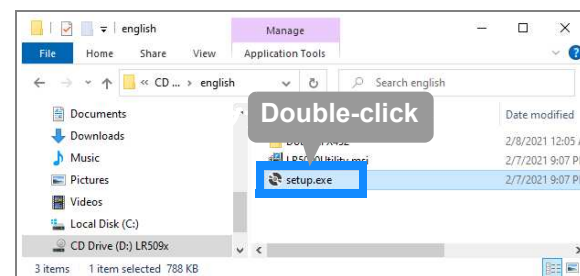
Required Items: Supplied CD



- 2 Click [Start] to display the application list.
Click [Windows System]-[File Explorer] to start Explorer.



- 3 Double-click [setup.exe] (SET UP file).



■ LR5000 Utility Program Operating Requirements

- CPU 1 GHz or faster processor clock
- RAM 1 GB or more (32-bit), 2 GB or more (64-bit)
- OS Windows 7, Windows 10
- Library .NET Framework 4.5.2 or later
- Interface USB
- Monitor Resolution 1024 × 768 or higher
- Hard Disk At least 30 MB free space (Additional space is required for storing recorded data)

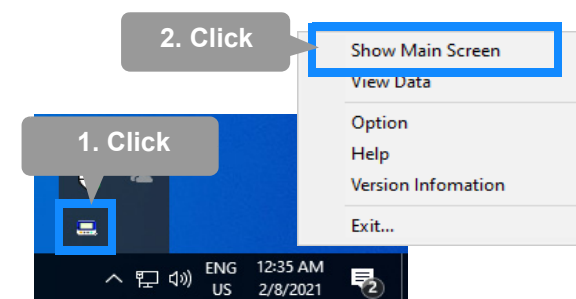
■ What if the PC Utility program cannot be installed?

- Be sure that the computer meets the above operating requirements.
- Carefully read "Installing the PC Application Program" in the Instruction manual, and reinstall. Pay special attention to the following items.
 1. Be sure to log in using an Administrator account.
 2. Before installing, be sure to close any programs running on the computer.

2 Starting the PC Utility Program

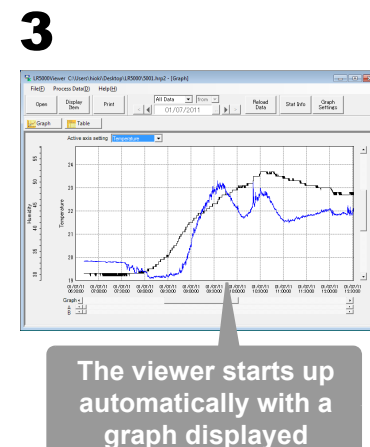
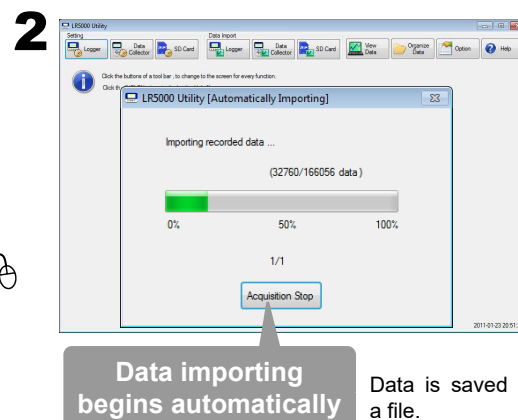
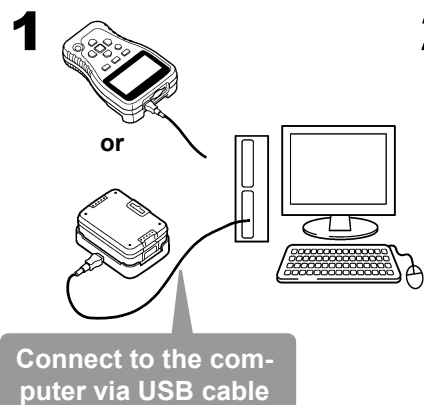
From the Windows [Start] menu, select [HIOKI LR5000 Utility Software]-[LR5000 Utility] to start the program.

The program starts automatically from the next Windows logon, and the icon appears in the task tray (notification area).



3 Importing (Saving) Recorded Data to a Computer, and Graph Display

Required Items: LR5091 or LR5092-20 and supplied USB cable



PC Utility Program Features

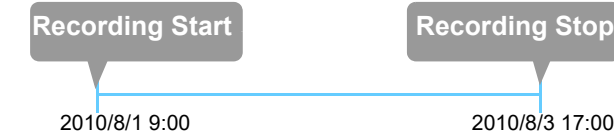
★

Making Detailed Settings

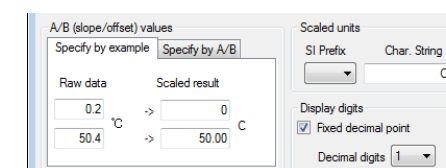
Configure settings on the LR5000 "Data Logger" series loggers, and on the LR5092-20 Data Collector. The PC utility program can access settings that cannot be accessed from the logger itself.

For example,

- Set recording start/stop method and timing to start and stop recording automatically at scheduled times (Timer Measurements).



- Measurement data can be freely scaled for display (Scaling).



- Set upper and lower thresholds so that measurements outside of the range cause [AL] (Alarm) to appear on the logger screen (Alarm Judgment).

- Add comments to measurement data.

★

Processing Recorded Data

Process data imported to the computer.

- Freely scale for display (Scaling)
- Calculate electric power easily (using clamp logger measurement values)
- Calculate energy cost easily (using clamp logger measurement values)
- Calculate duty cycle
- Integration
- Calculate dew-point temperature (using temperature/humidity logger measurement values)

★

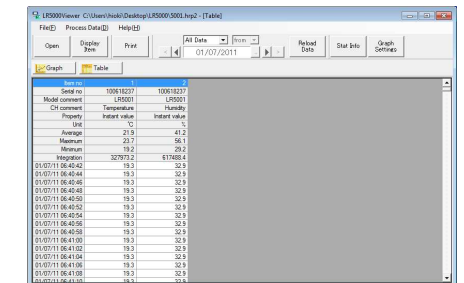
Organizing Recorded Data

Sort data imported to the computer.

- Copy (files between folders)
- Move (selected files between folders)
- Delete (selected files)
- Combine (multiple recording files into one, and save with new file name)
- Extract (data for a specified period, and save with new file name)

★

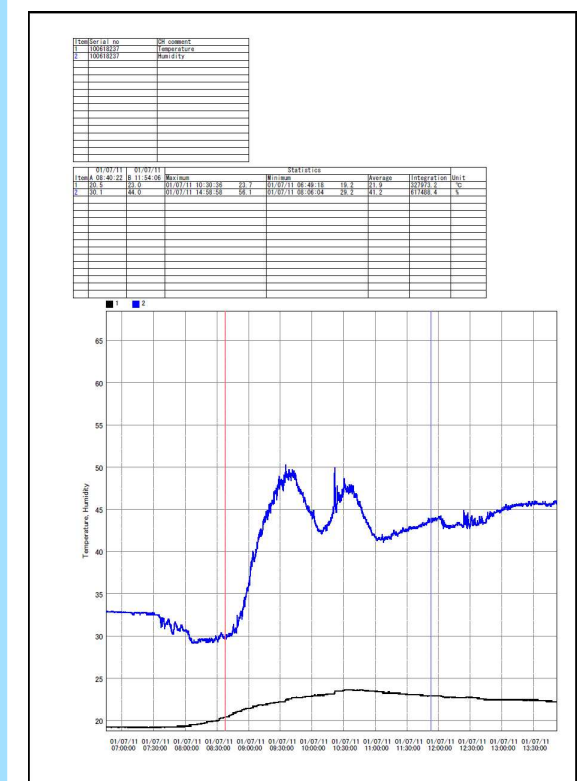
Displaying Recorded Data in a Table



★

Printing Recorded Data

Example Graph Printout



■ See the Instruction manual for details.

