

5. MAINTENANCE

Performing proper and periodic maintenance extends the product life. Wear of the product will differ depending on work environment, the quality and quantity of the solder and flux. Apply the following service procedure as dictated by the conditions of the usage.

HAKKO FA-430 counts used number of the pre-filter in order to determine the remaining life of the main filter. There are a few points to observe when replacing filters. Read “How to replace the filter” and follow the procedure. Replacing the filter without following the procedure may cause the overuse of the main filter and subsequent damage to the unit.

● Filter replacement timing

Pre-filter : 80% of the pre-filter is clogged or it was used for 160 hours. (The orange lamp flashes.)
Main filter : When the 10th pre-filter needs replacing. (The orange and red lamp flash.)

⚠ CAUTION
Replacing the filter without following the procedure will disrupt the timing for filter replacement and may cause the overuse of the filters and subsequent damage to the unit.

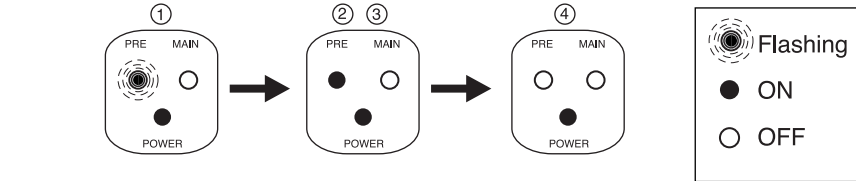
● How to replace the filter

NOTE:
● The lamp status indicates appropriate time to replace the main filter and pre-filter. If continuing to use the main filter or pre-filter after the lamp status indicates it is time for replacement, it may result in reduced performance and/or subsequent damage to the unit.
● When replacing the filter, set the flow selection switch to RESET without turning off the power switch.

A. Pre-filter

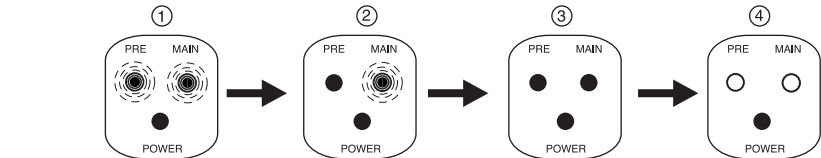
NOTE:
Do not lift the main filter when replacing the pre-filter.If the main filter is lifted for more than 3 seconds with the power switch on and the flow control set to RESET, the used number of the pre-filter are reset to zero.

- ① Pre-filter lamp (orange) flashes.
- ② Set the flow selection switch to RESET with the power switch on. (The fan will stop.)
- ③ Open the upper cover and remove the pre-filter only. Fit the new pre-filter on top of the main filter so that it lies flat with no gaps, then close the upper cover.
- ④ Set the flow selection switch back to the previous position.
The fan will start running and the unit will return to a normal operating condition.



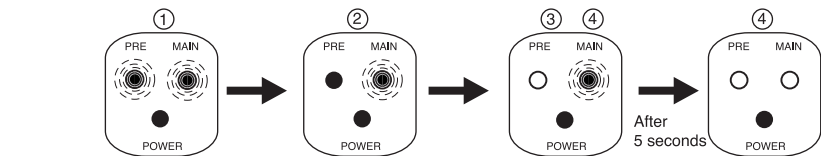
B. Main filter

- ① Pre-filter lamp (orange) and main filter lamp (red) flash.
- ② Set the flow selection switch to RESET with the power switch on. (The fan will stop.)
- ③ Open the upper cover and then remove both main filter and pre-filter.
Replace the filters with the new filters, fit them in the main unit and close the upper cover.
- ④ Set the flow selection switch back to the previous position.
The fan will start running and the unit will return to a normal operating condition.



*Pre-filter lamp (orange) and main filter lamp (red) flash, but if you can not replace the main filter immediately, observe the following procedure.

- ① Pre-filter lamp (orange) and main filter lamp (red) flash.
- ② Set the flow selection switch to RESET with the power switch on. (The fan will stop.)
- ③ Open the upper cover and then remove the pre-filter only. Fit the new pre-filter on top of the main filter so that it lies flat with no gaps, then close the upper cover.
- ④ Set the flow selection switch back to the previous position.
After 5 seconds are passed, the red lamp will be turned off.



⚠ CAUTION
Main filter lamp (red) will flash for 5 seconds every time the power switch is turned on. Performance of the main filter is reduced. Replace it at once.

6. TROUBLE SHOOTING GUIDE

● Nothing happens when the power switch is turned on.

CHECK : Is the power cord disconnected ?
ACTION : Connect it.

CHECK : Is the main filter set properly ?
ACTION : Fit the main filter properly before turning on the power switch again.

CHECK : Is the flow control set to RESET ?
ACTION : Adjust the flow suitable for working environment by using the flow selection switch.

● Orange lamp keeps flashing after replacing the pre-filter.

CHECK : When replacing the filter, Is the flow selection switch adjusted to RESET with the power switch on ?
ACTION : Make sure that power switch is ON, and set the flow selection switch to RESET again.

● Red lamp keeps flashing after replacing the main filter.

CHECK : When replacing the filter, Is the flow selection switch adjusted to RESET with the power switch on?
ACTION : Make sure that power switch is on and set the flow selection switch to RESET. Lift the main filter more than 3 seconds.

● Red lamp is flashing for 5 seconds just after turning the power switch on.

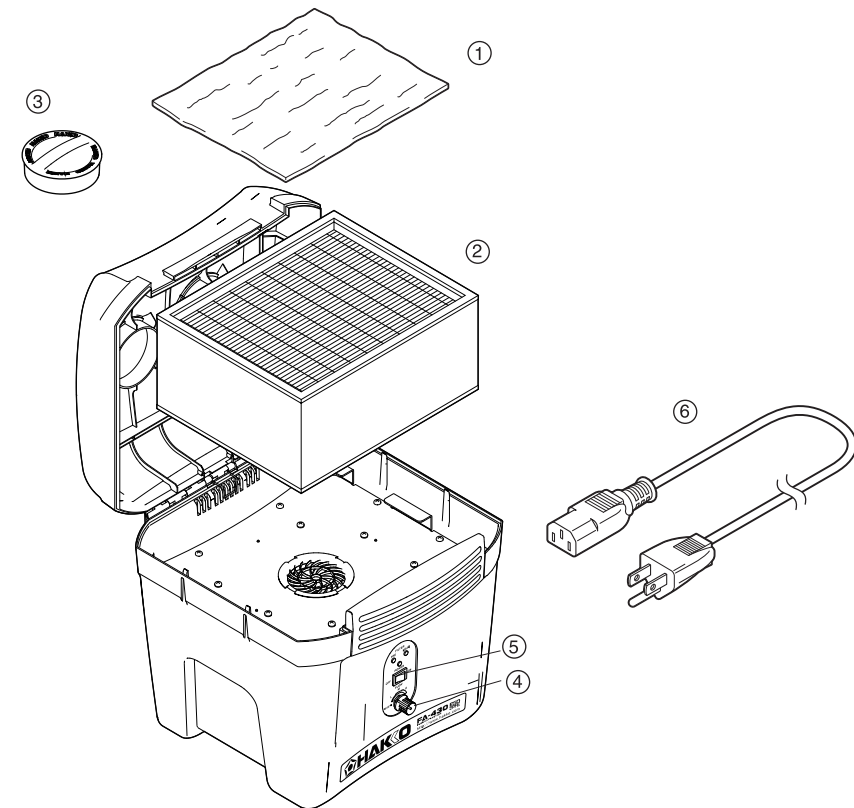
ACTION : Main filter needs to be replaced. Recommend replacing the main filter otherwise performance will be reduced.

● Red lamp lights up.

ACTION : Main filter has exceeded its service life and was never replaced. It has passed more than 2000 hours since it is used. Main filter must be replaced. Failure to do so may result in damage to the unit.
ACTION : Service Required. Contact your HAKKO representative.

● All lamp flashes at the same time.

7. PARTS LIST



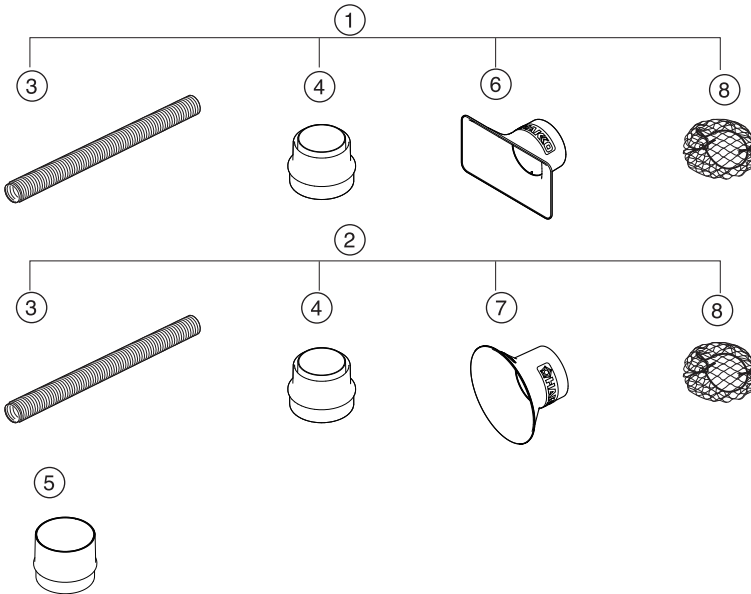
7. PARTS LIST

●HAKKO FA-430

Item No.	Part No.	Part Name	Specifications
①	A1585	Pre-filter	10 pcs.
②	A1586	Main filter	
③	B3619	Cap	
④	B1486	Knob	
⑤	B2852	Power switch	
⑥	B3641	Power cord, 3 wired cord & American plug	120V

●Option

Item No.	Part No.	Part Name	Specifications
①	C1571	Duct set / Rectangular nozzle	Duct (1) / Adapter (1) Rectangular nozzle(1) / Net (1)
②	C1572	Duct set / Round nozzle	Duct (1) / Adapter (1) Round nozzle (1) / Net (1)
③	B3642	Duct	1.2 m, φ 55 mm
④	B3620	Adapter	For standard duct
⑤	B3621	Adapter	For 3 inch duct
⑥	B3622	Rectangular nozzle	
⑦	B3623	Round nozzle	
⑧	B3625	Net	5 pcs.



※ 各言語（日本語、英語、中国語、フランス語、ドイツ語、韓国語）の取扱説明書は以下のURL、HAKKO Document Portalからダウンロードしてご覧いただけます。
（商品によっては設定の無い言語がありますが、ご了承ください）
* 各言語（日本語、英語、中文、法語、独語、韓語）の使用説明書可以通过以下网站的HAKKO Document Portal 下载参阅。
（有一部分的产品没有设定外语对应，请见谅）
* Instruction manual in the language of Japanese, English, Chinese, French, German and Korean can be downloaded from the HAKKO Document Portal.
（Please note that some languages may not be available depending on the product.）

↓
<https://doc.hakko.com>