



American Hakko Products, Inc.

# PRODUCT BULLETIN

**Bulletin No:** PB422

**Issue Date:** 10-9-2018

**Available:** 10-9-2018

**Product Description:**

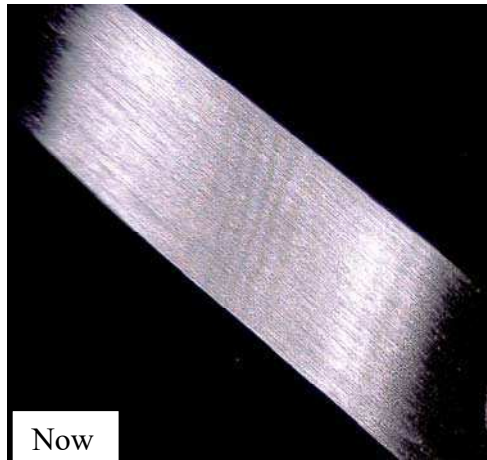
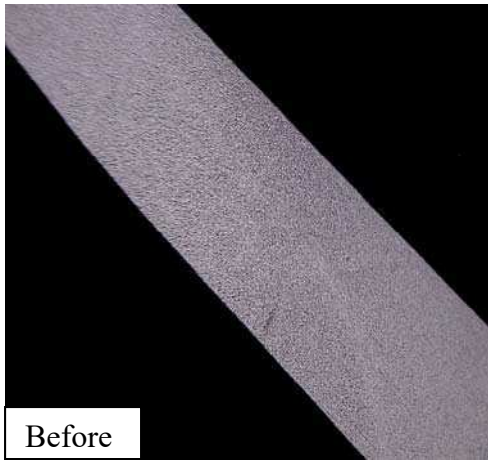
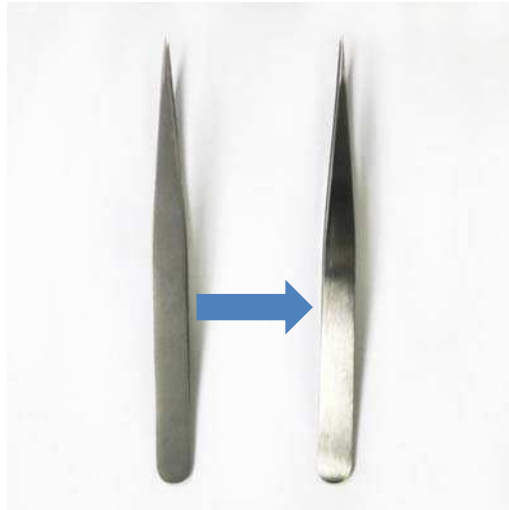
CHP Tweezers

**Part No:**

See list on page 2.

**Specification:**

Satin surface finish no longer performed.



**Comments:**

As part of the continuous process to improve our product quality, all CHP tweezers will now be manufactured without the satin surface finish. This is due to the bending radius of a small percentage of CHP tweezers affected by this process and became less consistent. The appearance of the tweezers will be different as shown in the above images, but there will not be any negative effect on its functionality. This change is being carried out through our inventory transition and will be completed after current stock run out.

For more information please visit us at [www.HakkoUSA.com](http://www.HakkoUSA.com)



American Hakko Products, Inc.

**Part Number List:**

PN	Description	PN	Description
0-SA	TWZ,SM,FINE POINT,120mm	3-SA	TWZ,SM,VERY SHARP POINT
00-SA	TWZ,SM,STRONG POINT	321-SA	TWZ,SM,FLAT ROUND END,SA
0A-SA	TWZ,SM,SLIM FINE POINT,SPECIAL	38-SA	TWZ,WIRE PLACEMENT
0C10-SA	TWZ,SM,FINE POINT,100mm	3C-SA	TWZ,SM,VERY SHARP POINT,110mm
00B-SA	TWZ,SM,STRONG POINT,GRV/GRIP	4-SA	TWZ,SM,EXTRA FINE POINT
00D-SA	TWZ,SERR.,STRONG POINT,GRV/GRIP	4A-SA	TWZ,SM,EXTRA FINE STRONG POINT
0C11-SA	TWZ,FLAT,FINE POINT,110mm	5-SA	TWZ,SM,SUPER FINE POINT
1-SA	TWZ,HEAVY,SM,SHARP POINT	5A-SA	TWZ,SM,OBLIQUE POINT,SPECIAL
102-SA	TWZ,SMD,COMP. HANDLE	51-S-SA	TWZ,BENT,SM,SUPER FINE POINT
103-SA	TWZ,SMD,COMP. HANDLE	5B-SA	TWZ,BENT,SM,SUPER FINE POINT
104-SA	TWZ,SMD,COMP. HANDLE	5C-SA	TWZ,SM,SUPER FINE POINT
105-SA	TWZ,SMD,COMP. HANDLE	6-SA	TWZ,SM,SHARP HOOK POINT,SPECIAL
106-SA	TWZ,SMD,COMP. HANDLE	65A-SA	TWZ,CRVD,SM,EXTRA LONG FINE POINT
107-SA	TWZ,SMD,COMP. HANDLE	7-SA	TWZ,CRVD,SM,FINE POINT
108-SA	TWZ,SMD,COMP. HANDLE	7A-SA	TWZ,CRVD,SM,STRONG FINE POINT
109-SA	TWZ,SMD,COMP. HANDLE	7E-SA	TWZ,CRVD,FLAT FINE POINT
110-SA	TWZ,SMD,COMP. HANDLE	85C-SA	TWZ,WAFER
111-SA	TWZ,SMD,COMP. HANDLE	A-SA	TWZ,SM,PRECISION FINE POINT
19-SA	TWZ,SERRATED POINTS	AA-SA	TWZ,SM,FINE POINT
2-SA	TWZ,SLIM,SM,FINE POINT	AC-SA	TWZ,SM,PRECISION FINE POINT,GRV/GRIP
231-SA	TWZ,ECONO,SERR.,FINE POINT	D-CARBON	TWZ,WIRE CUTTING
232-SA	TWZ,SM,HEAVY GRIP	F-SA	TWZ,SM,FLAT POINT
233-SA	TWZ,SERR.,HEAVY GRIP	PSF	TWZ,SM,FLAT SQUARE POINT,SPECIAL
26-SA	TWZ,SM/LG,VERY FINE POINT	SA-SA	TWZ,SM,FINE STRONG POINT
2A-SA	TWZ,SM,ROUND POINT	SS-SA	TWZ,SM,LONG FINE POINT
2AB-SA	TWZ,CRVD,SM,ROUND POINT		