



HAKKO 152B

MOTOR DRIVE

MOTOR DRIVE

Instruction Manual

•

Thank you for purchasing the HAKKO 152B motor drive.
Please read this manual before operating the HAKKO 152B.
Keep this manual readily accessible for reference.

•



HAKKO CORPORATION **HEAD OFFICE**

4-5, Shiokusa 2-chome, Naniwa-ku, Osaka 556-0024 JAPAN
TEL: +81-6-6561-3225 FAX: +81-6-6561-8466
<https://www.hakko.com> E-mail: sales@hakko.com

OVERSEAS AFFILIATES

U.S.A.: AMERICAN HAKKO PRODUCTS, INC.

TEL: (661) 294-0090 FAX: (661) 294-0096
Toll Free (800) 88-HAKKO
<https://www.HakkoUSA.com> E-mail: Support@HakkoUSA.com

HONG KONG: HAKKO DEVELOPMENT CO., LTD.

TEL: 2811-5588 FAX: 2590-0217
<https://www.hakko.com.cn> E-mail: info@hakko.com.hk

SINGAPORE: HAKKO PRODUCTS PTE., LTD.

TEL: 6748-2277 FAX: 6744-0033
<https://www.hakko.com.sg> E-mail: sales@hakko.com.sg

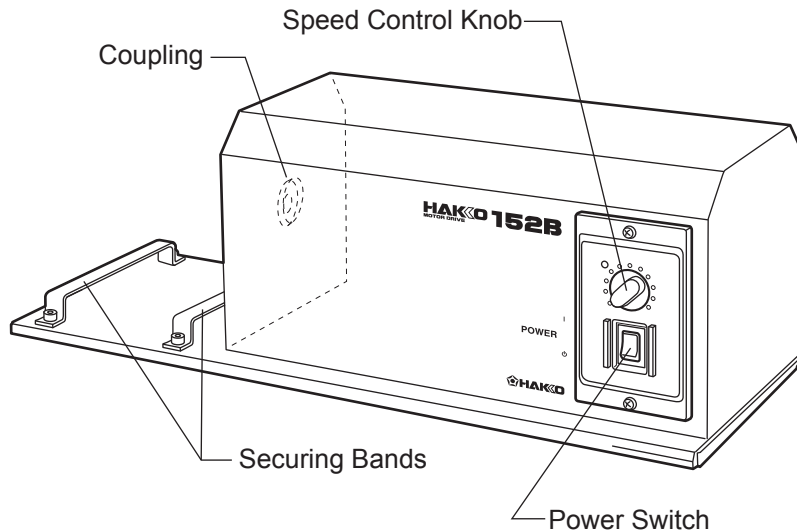
Please access the web address below for other distributors.
<https://www.hakko.com>

Specifications

Name	HAKKO 152B
Power Consumption	30 W
Rotation Speed, max	50 Hz : 28 rpm ; 60 Hz : 34 rpm
Outer Dimensions	430 (W) × 140 (H) × 150 (D) mm [16.9 × 5.5 × 5.9 in]
Weight	5.6 kg (12.34 lbs)
Processing Capacity, max.	with Lead Former ; 30,000 pcs/h (50 Hz) with Lead Former ; 36,000 pcs/h (60 Hz) with Lead Cutter ; 15,000 pcs/h (50 Hz) with Lead Cutter ; 18,000 pcs/h (60 Hz)

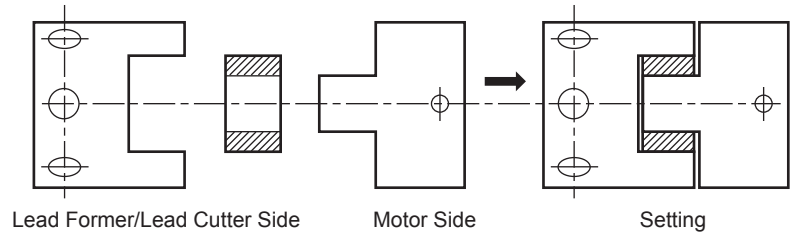
• Specifications written here may be subject to change without notice.

Names of Parts



Operating Instructions

1. Loosen the hex socket set screw securing the handle of the lead former/lead cutter and remove the handle.
2. Insert the shaft of the lead former/lead cutter into the coupling and secure it with the hex socket set screw.
3. Remove the 4 hex drive bolts securing the two securing bands and remove the bands.
4. Attach the lead former/lead cutter coupling to the motor coupling, ensuring that the gears mesh.



5. Secure the lead former/lead cutter to the motor drive with the two securing bands.
6. Adjust the gearing of the lead former/lead cutter and leads by inserting a screwdriver or other appropriate tool into the coupling hole and rotating the tool until proper alignment is achieved.
7. Turn the power switch ON and adjust the speed control knob.