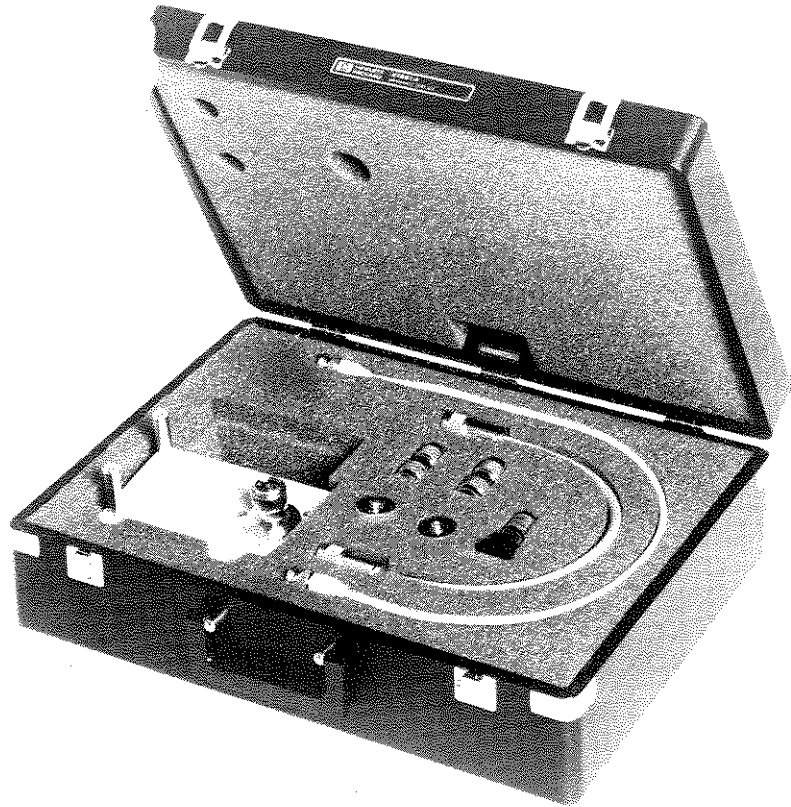


41951A

IMPEDANCE TEST KIT

for HP 4195A



NOV. 1987



WARRANTY AND ASSISTANCE

All Hewlett-Packard products are warranted against defects in materials and workmanship. This warranty applies for one year from the date of delivery, or, in the case of certain major components listed in the operating manual, for the specified period. We will repair or replace products which prove to be defective during the warranty period provided they are returned to Hewlett-Packard. No other warranty is expressed or implied. We are not liable for consequential damages.

For any assistance, contact your nearest Hewlett-Packard Sales and Service Office. Addresses are provided at the back of this manual.

MANUAL CHANGES

HP 41951A

Impedance Test Kit for HP 4195A

MANUAL IDENTIFICATION

Model Number: HP 41951A
Date Printed: November, 1987
Part Number: 41951-90000

This supplement contains information for correcting manual errors and for adapting the manual to newer instruments that contain improvements or modifications not documented in the existing manual.

To use this supplement

1. Make all ERRATA corrections
2. Make all appropriate serial-number-related changes listed below

SERIAL PREFIX OR NUMBER MAKE MANUAL CHANGES

SERIAL PREFIX OR NUMBER	MAKE MANUAL CHANGES
ALL	1

SERIAL PREFIX OR NUMBER MAKE MANUAL CHANGES

SERIAL PREFIX OR NUMBER	MAKE MANUAL CHANGES

▶ New Item

ERRATA

- ▶ Page 1-3, Table 1-2. Contents

Change the part number of item 1, Impedance Test Adapter, to 41951-61001.

- ▶ Page 1-6, Figure 1-3. Impedance Measurement Accuracy

Change the chart's inductance axis 10fH and 100fH scale labels to 10pH and 100pH, respectively.

NOTE

Manual change supplements are revised as often as necessary to keep manuals as current and accurate as possible. Hewlett-Packard recommends that you periodically request the latest edition of this supplement. Free copies are available from all HP offices. When requesting copies, quote the manual identification information from your supplement, or the model number and print date from the title page of the manual.

CHANGE 1

Page 6-6, Table 6-3. Replaceable Parts

Change item 5 as follows.

Reference Designator	HP Part Number	Qty.	Description
5	1250-1811	3	N(f)-SMA(f) Adapter (with NUT)
	2190-0054	3	Washer



OPERATION NOTE

MODEL 41951A
IMPEDANCE TEST KIT
for HP 4195A

SERIAL NUMBERS

This operation note applies directly to 41951As with 2746J- prefixed serial numbers.

© COPYRIGHT: YOKOGAWA-HEWLETT-PACKARD, LTD., 1987
9-1, TAKAKURA-CHO, HACHIOJI-SHI, TOKYO, JAPAN

Manual Part No. 41951-90000
Microfiche Part No. 41951-90050

Printed: Nov. 1987

TABLE OF CONTENTS

Section	Title	Page
<i>1. GENERAL INFORMATION</i>		
		1-1
1-1.	INTRODUCTION	1-1
1-2.	DESCRIPTION	1-1
1-3.	SPECIFICATIONS	1-1
1-4.	SAFETY CONSIDERATIONS	1-2
1-5.	UNITS COVERED BY THIS MANUAL	1-3
1-6.	CONTENTS	1-3
1-7.	ACCESSORIES AVAILABLE	
<i>2. INSTALLATION</i>		
		2-1
2-1.	INTRODUCTION	2-1
2-2.	INITIAL INSPECTION	2-1
2-3.	INTERCONNECTIONS	2-2
2-4.	STORAGE ENVIRONMENT	2-2
2-5.	PACKING	
<i>3. OPERATION</i>		
		3-1
3-1.	INTRODUCTION	3-1
3-2.	BLOCK DIAGRAM	3-1
3-3.	APC-7 CONNECTOR	3-2
3-4.	CONNECTING TEST FIXTURE	3-2
3-5.	MEASUREMENT CALIBRATION CONSIDERATION	3-2
3-5-1.	One Port Full Calibration	3-3
3-5-2.	Port Extension	3-3
3-5-3.	Offset Compensation	3-4
3-6.	TEST SIGNAL LEVEL AND OUTPUT IMPEDANCE	3-5
3-7.	DC BIAS	3-5
3-7-1.	Internal DC Bias	3-5
3-7-2.	External DC Bias	
<i>4. VERIFICATION TEST</i>		
		4-1
4-1.	INTRODUCTION	4-1
4-2.	EQUIPMENT REQUIRED	4-1
4-3.	CALIBRATION CYCLE	4-2
4-4.	DC PATH CHECK	4-3
4-5.	RF PATH CHECK	
<i>5. MANUAL CHANGES</i>		
		5-1
5-1.	INTRODUCTION	5-1
5-2.	MANUAL CHANGES	
<i>6. SERVICE</i>		
		6-1
6-1.	INTRODUCTION	6-1
6-2.	SCHEMATICS AND REPLACEABLE PARTS	

SECTION 1

GENERAL INFORMATION

1-1. INTRODUCTION

This operation note provides the information necessary to use the HP 41951A Impedance Test Kit with the HP 4195A Network/Spectrum Analyzer. Refer to the 4195A's Operation Manual for specific 4195A operating procedures.

1-2. DESCRIPTION

The 41951A Impedance Test Kit is an accessory for the 4195A. Figure 1-1 shows the contents of the HP 41951A.

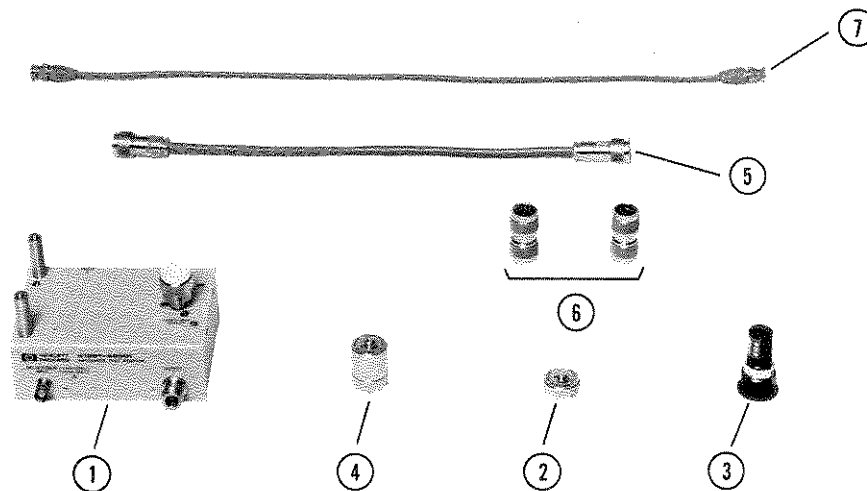


Figure 1-1. Contents of HP 41951A

1-3. SPECIFICATIONS

The specifications for the 41951A Impedance Test Kit is listed in Table 1-1. The specifications are performance standards or limits. The 41951A meets all of the specifications listed in Table 1-1 when shipped from the factory.

1-4. SAFETY CONSIDERATIONS

The 41951A Impedance Test Kit conform to the safety requirements for IEC 348, and CSA 556B instruments, and is shipped from the factory in a safe condition. This operation note contains information, **CAUTIONS**, and **WARNINGS** which must be followed by the user to ensure safe operation.

1-5. UNITS COVERED BY THIS OPERATION NOTE

Hewlett-Packard uses a two-part, nine character serial number which is stamped on the serial number plate (see Figure 1-2) attached to the inside of the carrying case. The first four digits and a letter are the prefix and the last five digits are the suffix of the serial number. The letter in the serial number identifies the country where the instrument was manufactured. The prefix is same for all identical instruments, it changes only when a change is made to the instrument. The suffix, however, is assigned sequentially and is different for each instrument. This operation note applies to instruments with serial number prefixes listed under **Serial Numbers** on the title page.

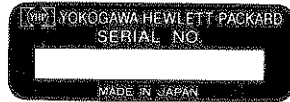


Figure 1-2. Serial Number Plate

Units manufactured after this operation note was printed may have a serial number prefix which is not listed on the title page. An unlisted serial number prefix indicates that the instrument may be different from those described in this operation note. Operation notes for new instruments may be accompanied by a yellow Manual Changes supplement page, or have a different part number. This supplement contains "**Change Information**" explaining how to adapt this operation note to newer instruments.

In addition to change information, the supplement may contain information for correcting errors (Errata) in previous operation notes. To keep this operation note as current and accurate as possible, Hewlett-Packard recommends that you periodically request the latest Manual Change supplements. The supplement for this operation note is identified by the **Print Date** and **Part Number**, both of which appear on the operation note's title page.

For information concerning the serial number prefixes not listed on the title page or in the Manual Change supplements, contact your nearest Hewlett-Packard Sales office.

1-6. CONTENTS

Table 1-2 lists the contents, and includes **No.** which are the same as the designation in Figure 1-1, **Description**, **Qty.** (Quantity), and **HP part number**.

Table 1-2. Contents

No.	Description	Qty.	HP Part Number
1	Impedance Test Adapter	1	PN 41951-69001
2	0 Ω Calibration Standard	1	PN 04191-85300
3	50 Ω Calibration Standard	1	PN 04191-85301
4	0S Calibration Standard	1	PN 04191-85302
5	N(m)-N(m) Cable	1	PN 41951-61602
6	N(m)-N(m) Adapter	2	PN 1250-0778
7	BNC(m)-BNC(m) Cable	1	PN 8120-1839
	Carrying case	1	PN 41951-60001 ¹

Note ¹: The serial number plate is not included in the carrying case.

1-7. AVAILABLE ACCESSORIES

For making certain types of measurements and for convenience in connecting samples, five accessories are available. Each is designed to meet the various measurement requirements of a variety of test devices. All accessories are developed with careful consideration to accuracy, reliability, and ease of use. A brief description and a photo of each available accessory are given in Table 1-3.

Table 1-1. Specifications (1 of 2)

41951A Specifications

Usable Frequency Range:	100 kHz to 500 MHz
DC Bias Range:	± 40 V, ± 0.5 A
UNKNOWN Port:	APC-7 Connector
Weight:	Approx. 2.7 kg Approx. 0.55 kg (Test Adapter only)
Operation Environment:	0°C to 55°C $\leq 95\%$ RH at 40°C
Storage Environment:	-40°C to 70°C

The following specifications apply to the 4195A when used with the 41951A.

Measurement Parameter:	$ Z $, $ Y $, θ , R, X, G, B, L, C, D, $Q(=1/D)$
Test Frequency Range:	100 kHz to 500 MHz
Signal Level at DUT (nominal):	-62 dBm to +3 dBm at 50 Ω load
	Note: Signal level (at DUT) is 12 dB lower than 4195A output level.
Output Impedance:	Nominal 50 Ω
DC Bias (supplied from 4195A):	
Voltage Range	-40 V to 40 V
Resolution	10 mV
Accuracy	$\pm(0.12\%+12$ mV) at 23°C $\pm 5^\circ$ C
Maximum Current	± 20 mA

Table 1-3. Specifications (2 of 2)

Measurement Range and Highest Resolution:

Parameter	Range	Resolution
Z , R, X	30 mΩ to 30 kΩ	10 mΩ
Y , G, B	30 μS to 30 S	10 μS
θ	-180° to 180°	0.01°
L	10 pH to 30 mH	10 pH
C	10 fF to 30 μF	10 fF
D	0.001 to 10	0.0001
Q	0.1 to 1000	0.01

Measurement Accuracy (Supplemental Performance Characteristics):

Measurement accuracy is specified at the connecting surface of the APC-7 connector, under the following conditions.

- 1) Warm up Time: >30 minutes
- 2) Ambient Temperature: 23°C ±5°C
at the same temperature at which Calibration was performed
- 3) Output Signal Level: 15 dB greater than the Input Range of reference port (the value indicated by ' RANGE R=' on the 4195A's display)
- 4) Signal Level at DUT: -20 to +3 dBm
- 5) Correction: ON

Figure 1-3 shows the impedance measurement accuracy of HP 4195A when used with the 41951A.

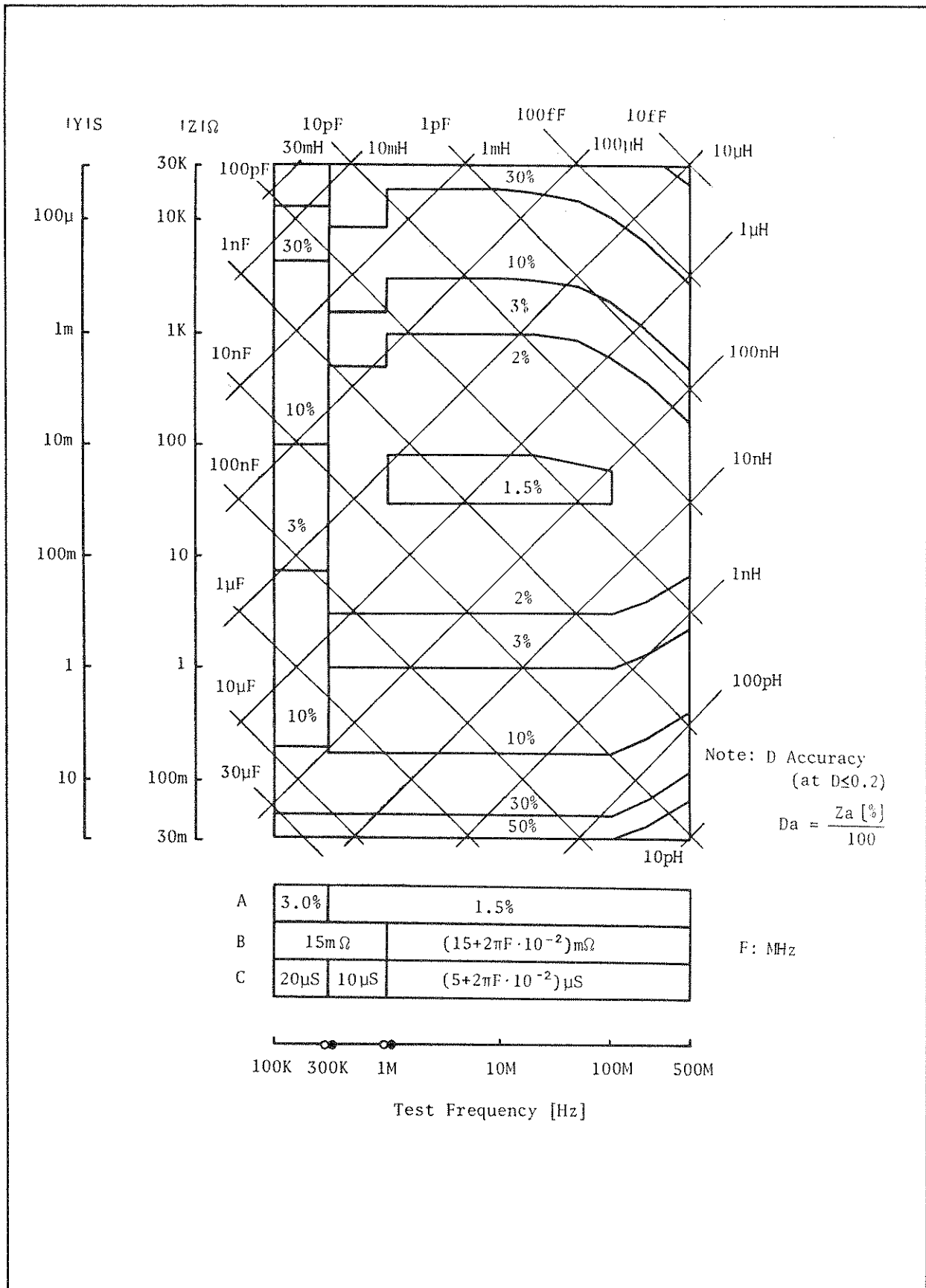
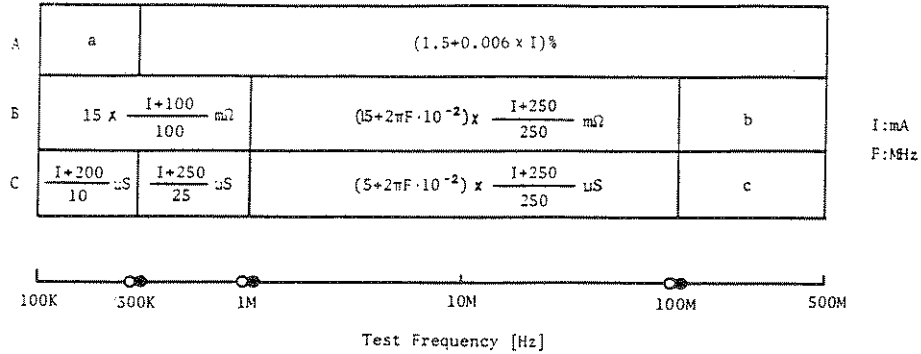


Figure 1-3. Impedance Measurement Accuracy (1 of 4)

- Note: 1. The above data applies to the averaged measurement data (applies when the VIDEO FILTER is on).
2. When the DC bias is used, use the following value of A, B, and C in place of the above value, to calculate the measurement accuracy.



$$a: (3.0+0.006 \times I)\%$$

$$b: (15+2\pi F \cdot 10^{-2}) \times \frac{I+100}{100} \text{ m}\Omega$$

$$c: (5+2\pi F \cdot 10^{-2}) \times \frac{I+100}{100} \text{ }\mu\text{S}$$

|Z| - θ Accuracy:

|Z| accuracy $Z_a = A+(B/|Z_m|+C \times |Z_m|) \times 100 (\%)$

θ accuracy $\theta_a = \sin^{-1}(Z_a/100)$

Where |Z_m| is |Z| measured. A, B and C are obtained from the graph above.

|Y| - θ Accuracy:

|Y| accuracy $Y_a = A+(B \times |Y_m|+C/|Y_m|) \times 100 (\%)$

θ accuracy $\theta_a = \sin^{-1}(Y_a/100)$

Where |Y_m| is |Y| measured. A, B and C are obtained from the graph above.

Figure 1-3. Impedance Measurement Accuracy (2 of 4)

R, X Accuracy (depends on D):

	D ≤ 0.2	0.2 < D ≤ 5	5 < D
Ra	$\pm X_m \cdot \frac{Z_a(X)}{100} (\Omega)$	$\frac{Z_a(R)}{\cos\theta} (\%)$	Za(R) (%)
Xa	Za(X) (%)	$\frac{Z_a(X)}{\sin\theta} (\%)$	$\pm R_m \cdot \frac{Z_a(R)}{100} (\Omega)$

D can be calculated as R/X,
 $R/(2 \times \pi \times f \times L_s)$ or $R \times 2 \times \pi \times f \times C_s$

θ can be calculated as $\tan^{-1}(X/R)$,
 $\tan^{-1}(2 \times \pi \times f \times L_s/R)$ or
 $\tan^{-1}(1/(R \times 2 \times \pi \times f \times C_s))$

$$Z_a(R) = A + (B/|R_m| + C \times |R_m|) \times 100 (\%)$$

$$Z_a(X) = A + (B/|X_m| + C \times |X_m|) \times 100 (\%)$$

Rm and Xm are the measured R and X, respectively. A, B and C are obtained from the preceding graph.

G, B Accuracy (depends on D):

	D ≤ 0.2	0.2 < D ≤ 5	5 < D
Ga	$\pm B_m \cdot \frac{Y_a(B)}{100} (S)$	$\frac{Y_a(G)}{\cos\theta} (\%)$	Ya(G)
Ba	Ya(B) (%)	$\frac{Y_a(B)}{\sin\theta} (\%)$	$\pm G_m \cdot \frac{Y_a(G)}{100} (S)$

D can be calculated as G/B,
 $G/(2 \times \pi \times f \times C_p)$ or $G \times 2 \times \pi \times f \times L_p$

θ can be calculated as $\tan^{-1}(B/G)$,
 $\tan^{-1}(2 \times \pi \times f \times C_p/G)$ or
 $\tan^{-1}(1/(G \times 2 \times \pi \times f \times L_p))$

$$Y_a(G) = A + (B \times |G_m| + C/|G_m|) \times 100 (\%)$$

$$Y_a(B) = A + (B \times |B_m| + C/|B_m|) \times 100 (\%)$$

Gm and Bm are measured G and B, respectively. A, B and C are obtained from the preceding graph.

Figure 1-3. Impedance Measurement Accuracy (3 of 4)

D Accuracy:

	$D \leq 0.2$	$0.2 < D$
Da	Za/100	$(Za/100) \times (1 + D^2)$

Where Za is |Z| accuracy

L Accuracy (depends on D):

	$D \leq 0.2$	$0.2 < D$
La	La	$La \times (1 + D)$

Where

$$La = A + (B/|Z| + C \times |Z|) \times 100 (\%)$$

Where $|Z| = 2 \times \pi \times f \times Lm$, f is frequency in Hz and Lm is measured L. A, B and C are obtained from the preceding graph.

C Accuracy (depends on D):

	$D \leq 0.2$	$0.2 < D$
Ca	Ca	$Ca \times (1 + D)$

Where

$$Ca = A + (B/|Zc| + C \times |Zc|) \times 100 (\%)$$

Where $|Zc| = 1/2 \times \pi \times f \times Cm$, f is frequency in Hz and Cm is the measured C. A, B and C are obtained from the preceding graph.

Figure 1-3. Impedance Measurement Accuracy (4 of 4)

Table 1-3. Available Accessories (1 of 2)

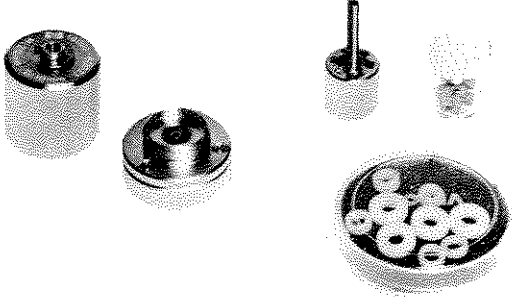
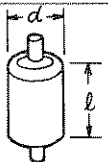
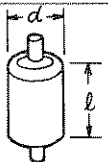
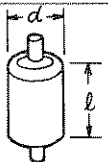
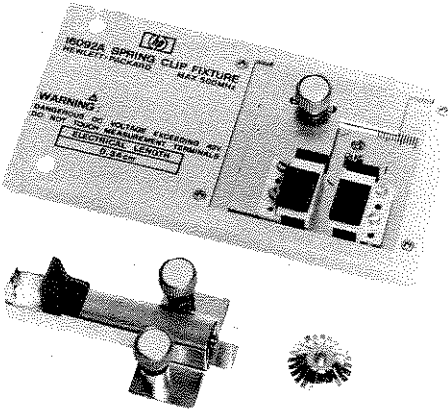
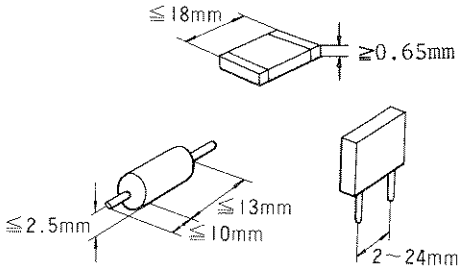
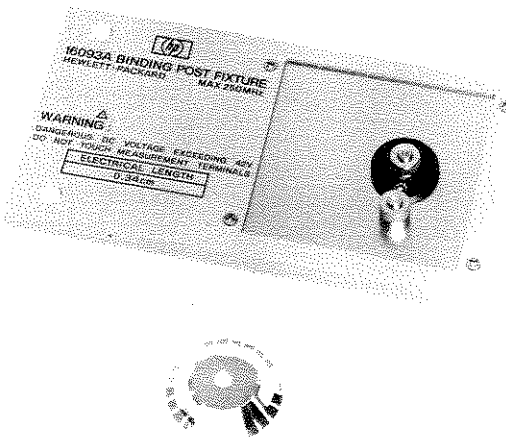
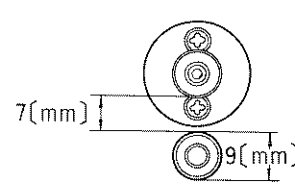
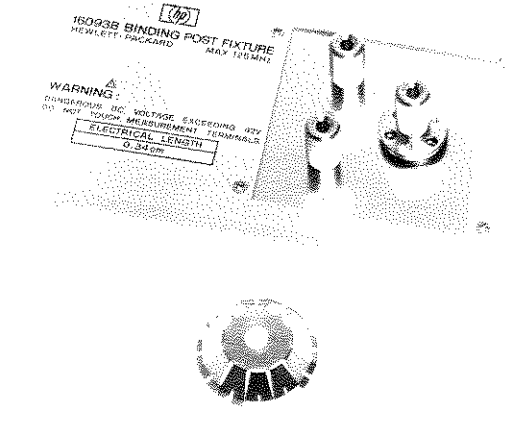
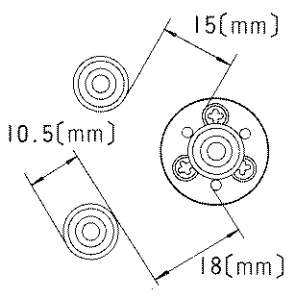
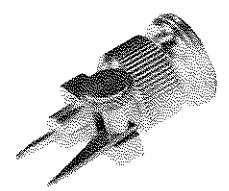
Model	Description																
<p data-bbox="337 386 480 415">HP 16091A</p> 	<p data-bbox="737 386 935 415">Coaxial Fixtures</p> <p data-bbox="737 445 1393 600">Test Fixtures (coaxial termination type) for holding a piece of sample holders accommodate a cylindrical sample in their respective inner chambers. Two kinds of fixtures fit samples dimensions given below:</p> <table border="1" data-bbox="802 625 1321 852"> <thead> <tr> <th>Sample</th> <th>Fixture</th> <th colspan="2">Max. dimensions</th> </tr> </thead> <tbody> <tr> <td rowspan="2">  </td> <td rowspan="2">04191-85302</td> <td>d</td> <td>7 mm</td> </tr> <tr> <td>ℓ</td> <td>20 mm</td> </tr> <tr> <td rowspan="2"></td> <td rowspan="2">16091-60012</td> <td>d</td> <td>10 mm</td> </tr> <tr> <td>ℓ</td> <td>20 mm</td> </tr> </tbody> </table> <p data-bbox="737 886 1273 978">Usable frequency range: DC to 1000 MHz. Electrical length: 1.87 cm (typical). Maximum applied DC bias voltage: ±40 V.</p> <p data-bbox="737 1012 1399 1167">Note: The 16091A fixture of 7 mm inner diameter (P/N 04191-85302) is actually the same as the OS standard termination. Thus, this fixture is not supplied with the 16091A fixture set since the furnished OS termination can be used.</p>	Sample	Fixture	Max. dimensions			04191-85302	d	7 mm	ℓ	20 mm		16091-60012	d	10 mm	ℓ	20 mm
Sample	Fixture	Max. dimensions															
	04191-85302	d	7 mm														
		ℓ	20 mm														
	16091-60012	d	10 mm														
		ℓ	20 mm														
<p data-bbox="347 1241 490 1270">HP 16092A</p> 	<p data-bbox="743 1234 977 1264">Spring Clip Fixture</p> <p data-bbox="743 1297 1399 1423">Test fixture for connecting axial and radial lead components, and leadless chip components. The spring clip contacts can be adjusted to the dimensions given below.</p>  <p data-bbox="743 1776 1406 1869">A slide gauge provides direct read-out of the length of the test sample. Maximum applicable DC bias is ±150 V/±0.5 A.</p>																

Table 1-3. Accessories Available (2 of 2)

<p>HP 16093A</p>  <p>The image shows the HP 16093A Binding Post Fixture, a rectangular metal device with a terminal deck on the right side. A warning label is visible on the left side, and a circular component is shown below the main unit.</p>	<p>Binding Post Fixture</p> <p>A test fixture used when measuring miniature axial and radial lead components. Two binding post terminals at intervals of 7 mm on the terminal deck ensure optimum contact of terminals and the test sample leads.</p>  <p>The diagram shows a circular terminal deck with two binding post terminals. A dimension line indicates a 7 mm interval between the terminals, and another dimension line indicates a 9 mm diameter for the terminal deck.</p> <p>The maximum DC bias that can be applied is $\pm 40 \text{ V} / \pm 0.5 \text{ A}$.</p>
<p>HP 16093B</p>  <p>The image shows the HP 16093B Binding Post Fixture, a rectangular metal device with a terminal deck on the right side. A warning label is visible on the left side, and a circular component is shown below the main unit.</p>	<p>Binding Post Fixture</p> <p>A Test fixture for connecting common axial and radial lead components. Three binding post terminals are located on the terminal deck as shown below.</p>  <p>The diagram shows a circular terminal deck with three binding post terminals. Dimension lines indicate a 15 mm interval between the top two terminals, a 10.5 mm interval between the bottom two terminals, and an 18 mm diameter for the terminal deck.</p> <p>The maximum DC bias that can be applied is $\pm 40 \text{ V} / \pm 0.5 \text{ A}$.</p>
<p>HP 16094A</p>  <p>The image shows the HP 16094A Probe Fixture, a cylindrical metal component with a probe needle extending from the tip.</p>	<p>Probe Fixture</p> <p>Test Fixture for measurement of circuit impedances and components mounted on circuit assemblies. The probe adapter unit can be attached at the tip of an extension line connected to the test port. The probe connector fits APC-7 connector of a coaxial test cable or a flexible air line. Probe needle interval is variable from 1 mm to 15 mm. Electrical length compensation in the instrument must be adjusted for probe cable length.</p> <p>Usable frequency range: DC to 125 MHz. Electrical length: 2.32 cm (typical). Maximum applied DC bias voltage: $\pm 40 \text{ V}$.</p>



SECTION 2

INSTALLATION

2-1. INTRODUCTION

This section provides installation instructions for the HP 41951A Impedance Test Kit. It also includes information on the initial inspection, damage claims, preparation for using the 41951A, packaging, storage, and shipment.

2-2. INITIAL INSPECTION

The 41951A Impedance Test Kit meet all of the specifications listed in Table 1-1. Upon receipt, inspect the shipping container for damage. If the shipping container or the cushioning material has been damaged, keep the container and packing material until the contents have been checked for completeness and the test kit has been checked out mechanically and electrically. The contents should be as shown in Figure 1-1. The procedures for checking the general electrical operation are given in Section 4.

If anything is missing, damaged (scratches, dents, broken connectors, etc.), or if performance does not meet the verification test limits, notify the nearest HP Sales office (see the list at the back of this operation note). The HP Sales Office will immediately arrange for repair or replacement without waiting for a claim settlement.

2-3. INTERCONNECTIONS

The interconnection between the 41951A and the 4195A, is achieved by connecting the **Impedance Test Adapter** to the 4195A's **Channel 1** or **2**, using the furnished Adapters and Cables.

1. Connect two female N-type connectors; **INPUT S** and **OUTPUT R**, to the 4195A's **OUTPUT S1** (or **S2**) and **INPUT R1** (or **R2**) connectors, using two furnished N(m)-N(m) Adapters, respectively.

NOTE

When connecting the **INPUT S** and **OUTPUT R** connectors, do not try to tighten one connector completely, alternately tighten each connector, little by little, until both connectors are tight.

2. Connect the **OUTPUT T** connector to the 4195A's **INPUT T1** (or **T2**) connector, using the furnished N(m)-N(m) Cable.
3. If the DC bias supplied from the 4195A is used, connect the **DC SOURCE INPUT** connector to the 4195A's **DC SOURCE OUTPUT** connector using the furnished BNC(m)-BNC(m) Cable.

NOTE

If the DC bias supplied from an external DC power supply is used, connect the **DC SOURCE INPUT** connector to the power supply's output terminal. The outer conductor of the **DC SOURCE INPUT** connector is grounded.

2-4. STORAGE ENVIRONMENT

The 41951A may be stored or shipped under the following environmental conditions.

Temperature -40°C to 70°C

The unit must be protected from temperature extremes which can cause condensation.

2-5. PACKING

Original Packing.

Containers and packing material identical to those used in factory packaging are available from Hewlett-Packard. If the unit is being returned to Hewlett-Packard for servicing, attach a tag indicating the type of service required, return address, model number and full serial number.

Other Packing.

The following general instructions should be used for repacking with commercially available materials:

- a. Wrap the unit in heavy paper or plastic. If shipping to a Hewlett-Packard Sales Office or Service Center, attach a tag indicating the type of service required, return address, model number and the full serial number.
- b. Use a strong shipping container. A double-walled carton made of 350 pound test material is adequate.
- c. Use enough shock absorbing material (a 3 to 4 inch layer) around all sides of the unit to provide a firm cushion and to prevent the unit from moving inside the container.
- d. Seal the shipping container securely.
- e. Mark the shipping container **FRAGILE** to ensure careful handling.
- f. In any correspondence, refer to unit by its model number and the full serial number.

NOTE

If you ever need to return the 41951A for servicing, HP recommends that you return your 4195A also so that system performance can be verified after repairs are made.

SECTION 3

OPERATION

3-1. INTRODUCTION

This section provides the information necessary to use the 41951A. **WARNINGS, CAUTIONS,** and **NOTES** are given throughout, and they should be followed to insure operator safety and serviceability of the unit.

NOTE

For detailed information on 4195A operation, refer to the 4195A's Operation Manual.

3-2. BLOCK DIAGRAM

The Impedance Test Adapter's block diagram is shown in Figure 3-1. The number included in Figure 3-1, indicates the insertion loss of the Impedance Test Adapter when the 41951A is connected to the HP 4195A, and the $50\ \Omega$ load is connected to the measurement terminal (APC-7 connector) of the Impedance Test Adapter. The output signal to the **OUTPUT R** connector is approximately 18 dB lower than the input signal to the **INPUT S** connector, and the output signal to the DUT is approximately 12 dB lower than the input signal (the voltage applied to DUT is about a quarter of the voltage supplied from the 4195A).

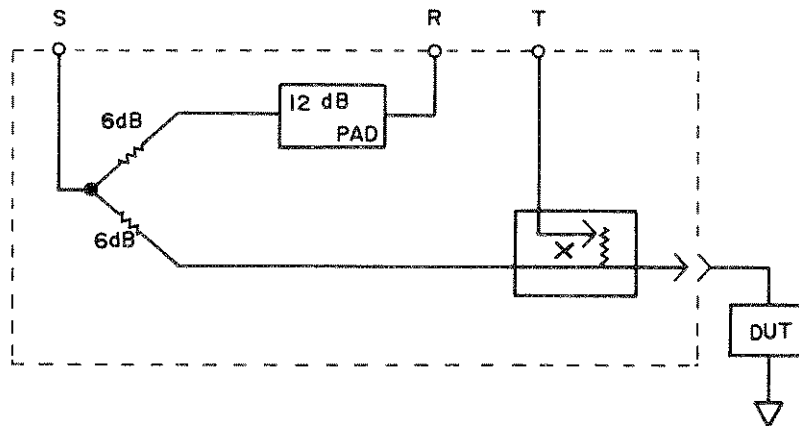


Figure 3-1. Impedance Test Adapter's Block Diagram

3-3. APC-7 CONNECTOR

The 41951A's measurement terminal is an APC-7 connector. This connector provides the capability for connecting and installing an accessory test fixture matched to the 41951A, or a user-built test fixture. The APC-7 connector test port, a two-terminal configuration, has a characteristic impedance of $50\ \Omega$ which is equal to the base impedance in reflection coefficient measurements. This base impedance represents the reference in the normalized impedance calculations for multiple parameter derivations.

The connecting surface of the APC-7 connector, the calibration standards, and the test fixtures must be kept free of spots, dust, oil and adhesives which will cause poor contact. To maintain clean contact surfaces, it is recommended that the operator perform periodic cleaning as necessary. Use a lint-free cloth and, if a cleaning fluid is needed, use isopropyl alcohol.

CAUTION

Do not use aromatic or chlorinated hydrocarbons, esters, ethers, terpenes, higher alcohols, ketones, or ether-alcohols such as benzene, toluene, turpentine, dioxane, gasoline, cellulose acetate, or carbon tetrachloride. Keep exposure of the connector parts to both the cleaning fluid and its vapors as brief as possible.

3-4. CONNECTING TEST FIXTURE

The following five test fixture are available for the impedance measurement using the 41951A with the 4195A (see Table 1-3).

HP 16091A	Coaxial Fixture
HP 16092A	Spring Clip Fixture
HP 16093A/B	Binding Post Fixture
HP 16094A	Probe Fixture

The test fixture is installed by connecting to the APC-7 connector on 41951A's Impedance Test Adapter. For the details, refer to the test fixtures' operation notes.

3-5. MEASUREMENT CALIBRATION CONSIDERATIONS

The 4195A provides the one port full calibration, port extension, and offset compensation capabilities for accurate impedance measurement. One port full calibration corrects for the measurement errors caused by the measurement instrument and Impedance Test Adapter. Port extension compensates for phase shifts in extension cables that connects the calibration plane and the DUT. Offset compensates for the measurement errors caused by the residual impedance and stray admittance, between the calibration plane and DUT. For details of the measurement calibration, refer to the 4195A's Operation Manual.

At the measurement which can perform the offset compensation at the measurement terminal, the one port full calibration and offset compensation should be performed. If the measurement terminal is extended using 50 Ω low loss cable (as the air line), or the offset compensation cannot be performed at the measurement terminal, the port extension should be performed instead of the offset compensation. If needed, all measurement calibration procedures can be performed under actual measurement conditions.

3-5-1. ONE PORT FULL CALIBRATION

The one port full calibration compensates for the measurement errors due to the frequency of the Impedance Test Adapter. This calibration is required to extend the calibration plane to the connecting surface of the APC-7 connector of the Impedance Test Adapter or the extended measurement terminal (see Figure 3-2). If the measurement terminal is extended by a cable with APC-7 connectors, the one port full calibration should be performed at the

extended measurement terminal. To perform one port full calibration, three calibration standards; 0 S , $0\ \Omega$, $50\ \Omega$, are required. For the procedure of the one port full calibration, refer to the 4195A's Operation Manual.

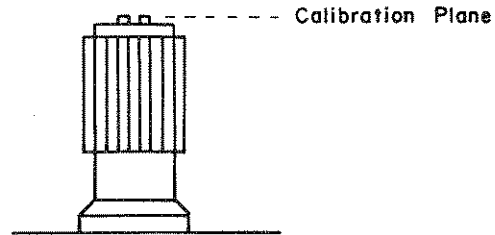


Figure 3-2. 41951A's Calibration Plane

The reference values of the furnished calibration standards are listed in Table 3-1.

Table 3-1. Reference Values for Calibration Standards

Standard	Reference Value
0 S admittance	$0\text{ S} + j \times \omega \times 82\text{ fF}$
$0\ \Omega$ impedance	$0\ \Omega + j \times \omega \times 0\text{ H}$
$50\ \Omega$ impedance	$50\ \Omega + j \times \omega \times 0\text{ H}$

These values are stored in the 4195A's battery back-up memory as the calibration reference values.

NOTE

If you extend the calibration plane beyond the connecting surface of the APC-7 connector, and you have accurate standards that can be connected to the end of the extension, calibration will be accurate to the end of the extension. Refer to the 4195A's Operation Manual for the procedure for entering the reference values of your standards.

3-5-2. PORT EXTENSION

The port extension compensates for the phase shift in the extension cable. This capability is effective when the measurement terminal is extended by the $50\ \Omega$ low loss cable as the air line, or when the offset compensation cannot be performed. For procedure of the port extension capability, refer to the 4195A's Operation Manual.

3-5-3. OFFSET COMPENSATION

The 4195A applies three offset compensation; 0 S & $0\ \Omega$ offset, 0 S offset, and $0\ \Omega$ offset compensation. The 0 S & $0\ \Omega$ offset compensates for the residual impedance and stray admittance existing in the test fixture, that is attached on an Impedance Test Adapter. The 0 S

offset compensates for the stray admittance, and the 0Ω offset compensates for the residual impedance.

To perform the offset compensation, select the offset compensation mode by pressing the '0S OFFSET', '0Ω OFFSET' or '0S&0Ω OFFSET' softkey. If the 0S & 0Ω offset compensation is selected, the '0S' and '0Ω' softkeys are displayed on the softkey area. If the 0S offset or 0Ω offset compensation is selected, one of these softkeys is displayed. To perform the offset compensation, short (or open) the measurement terminal on the test fixture, and press the '0Ω (or 0S)' softkey and ENTER/EXECUTE key.

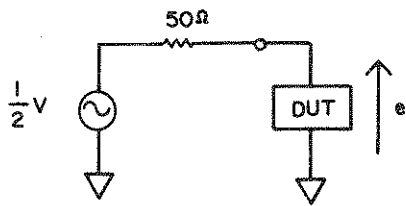
NOTE

The test fixture must be configured the same as it will be for performing compensation and for making a measurement.

3-6. TEST SIGNAL LEVEL AND OUTPUT IMPEDANCE

The test signal level applied to DUT depends on the test signal level applied from the 4195A, the output impedance and insertion loss of the Impedance Test Adapter, and the impedance of DUT. The 41951A's output impedance is approximately 50 Ω.

The equivalent circuit and equation to calculate the test signal level is shown in Figure 3-3.



$$e = V \times ZL / \{ 2 \times (ZL + 50) \} [V]$$

Where V: 4195A's output Signal Level [V]
 ZL: Impedance of DUT [Ω]
 e: Test Signal Level at DUT

Figure 3-3. Test Signal Level Calculation

The calculation example of the test signal level at DUT is shown in Table 3-2.

Table 3-2. Test Signal Level

Impedance of DUT	4195A's Signal Level Setting	
	0dBm	1V
infinite	112 mV	0.5 V
1 kΩ	106 mV	0.48 V
100 Ω	75 mV	0.33 V
50 Ω	56 mV	0.25 V

3-7. DC BIAS

3-7-1. Internal DC Bias

To use the 4195A's internal DC bias capability, connect the furnished BNC cable between the 4195A's **DC SOURCE OUTPUT** connector and the 41951A's **DC SOURCE INPUT** connector.

3-7-2. External DC Bias

External DC bias can be used up to ± 40 V and ± 500 mA.

CAUTION

DO NOT SHORT CIRCUIT WHEN AN EXTERNAL A DC BIAS IS APPLIED, OR YOU WILL BLOW THE FUSE IN THE IMPEDANCE TEST ADAPTER.

CAUTION

DO NOT PERFORM A CALIBRATION MEASUREMENT WHILE A DC BIAS IS APPLIED. THE CALIBRATION STANDARDS MAY BE DAMAGED IF YOU DO.



SECTION 4

VERIFICATION TEST

4-1. INTRODUCTION

This section contains the basic operational checkout procedures for the HP 41951A. All tests can be performed without access to the interior of the 41951A. The verification test is typically used for incoming inspection of the 41951A, and to verify that the Impedance Test Adapter is in good order after it has been repaired.

4-2. EQUIPMENT REQUIRED

Table 4-1 lists the equipment required to perform the verification test. Equipment that meets or exceeds the critical specifications listed in the table may be used as a substitute for the recommended models. The equipment used for verification testing must be calibrated.

Table 4-1. Recommended Test Equipment

Equipment	Critical Specifications	Recommended Model
Network Analyzer	Frequency: 100 kHz to 500 MHz Impedance: 50 Ω Accuracy: ± 0.5 dB	HP 4195A
Digital Multimeter	Resistance Measurement Range: 5 to 30 Ω Accuracy: $\pm 1\%$	HP 3478A
Power Splitter	Frequency: 100 kHz to 500 MHz Input Impedance: 50 Ω Output Impedance: 50 Ω	HP 11667A

4-3. CALIBRATION CYCLE

The 41951A requires periodic performance verification. The 41951A (Impedance Test Adapter) should be checked out using the verification test at least once a year or more depending on the frequency of use. Preventive maintenance should be performed at least twice a year to keep down-time to a minimum, and to insure optimum operation,

4-4. DC BIAS PATH CHECK

This test checks the resistance of the path between the 41951A's **DC SOURCE INPUT** connector and the APC-7 connector.

REQUIRED EQUIPMENT:

Digital Multimeter	HP 3478A
APC-7 to N(f) Adapter (1 ea.)	HP 11524A
Test Leads	

PROCEDURE:

1. Connect the Test Leads to the Digital Multimeter's high and low terminals.
2. Connect the APC-7 to N(f) Adapter to the Impedance Test Adapter's APC-7 connector.
3. Set the Digital Multimeter to the resistance measurement mode.
4. Connect a tip of the Test Lead connected to the DMM high input to the center conductor of the Impedance Test Adapter's **DC SOURCE INPUT** connector, and the tip of the Test Lead connected to the DMM's low input to the center conductor of the APC-7 to N(f) Adapter connected to the Impedance Test Adapter's APC-7 connector.
5. Check that the Digital Multimeter's reading is less than 10 Ω .

4-5. RF PATH CHECK

This test checks the RF path of the Impedance Test Adapter.

REQUIRED EQUIPMENT:

Network Analyzer	HP 4195A
Power Splitter	HP 11667A
N(m)-BNC(f) Adapter (4 ea.)	HP 1250-0780
BNC(m)-BNC(m) Cable (2 ea.)	HP 8120-1838

NOTE

The N(m)-N(m) Cable (2 ea. : HP 11500B) can be used instead of the N(m)-BNC(f) Adapter (4 ea.) and BNC(m)-BNC(m) Cable (2 ea.).

PROCEDURE:

1. Set the Network Analyzer as follows.

Source:	Frequency:	100 kHz to 500 MHz, Log sweep
	OSC Level:	+5 dBm
	DC Bias:	OFF
Receiver:	RBW:	1 kHz
	INPUT RANGE R-ch:	0 dBm
	T-ch:	0 dBm

2. Connect the Power Splitter to the Network Analyzer, as shown in Figure 4-1 (1).

NOTE

Use the N(m) to N(m) Adapter included with the 41951A to connect the Power Splitter's **INPUT** terminal to the Network Analyzer's **SOURCE** terminal,

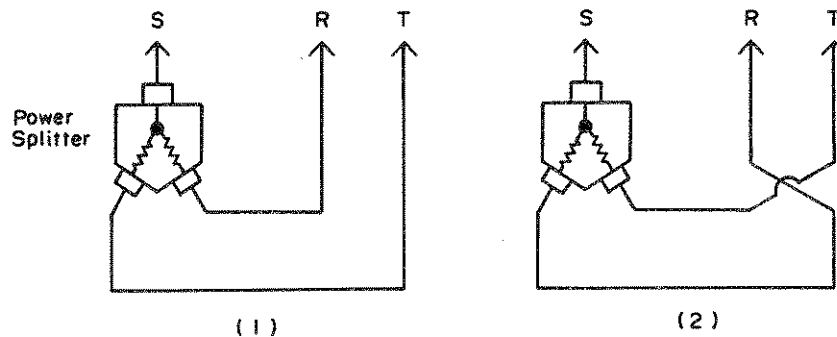


Figure 4-1. Power Splitter Connection

3. Measure the T/R and store the data (data D_1). All measured data in the measurement range, must be stored. This data is used to calculate the compensation data.
4. Swap the cable connection with the Adapter at the Network Analyzer's INPUT port (do not try to swap the cables at the Power Splitter's OUTPUT), as shown in Figure 4-1 (2).
5. Measure the T/R and store the data (data D_2).
6. Perform the following calculation, and store the result (data D_3). Data D_3 is used as the compensation data, in the following steps.

$$D_3 = \{ (\text{data } D_1) + (\text{data } D_2) \} / 2$$

7. Connect the Impedance Test Adapter to the Network Analyzer (refer to paragraph 2-3, INTERCONNECTION).
8. Connect the 0S Calibration Standard (OPEN) to the APC-7 connector of the Impedance Test Adapter, and measure the T/R.
9. Compensate the measured data by subtracting data D_3 from the measured data. Confirm that the compensated data is 0 ± 3 dB.
10. Connect the 0Ω Calibration Standard (SHORT) to the APC-7 connector of the Impedance Test Adapter, and measure the T/R.
11. Compensate the measured data by subtracting data D_3 from the measured data. Confirm that the compensated data is 0 ± 3 dB.
12. Connect the 50Ω Calibration Standard (LOAD) to the APC-7 connector of the Impedance Test Adapter, and measure the T/R.
13. Compensate the measured data by subtracting data D_3 from the measured data. Confirm that the compensated data is less than -30 dB.

NOTE

In steps 9, 11 and 13, the compensation can be performed easily, by using the 4195A's User Math capability. If the compensation data is stored in the 4195A's RA register, the following equation should be entered.

$$\text{DMA} = \text{MA} - \text{RA}$$

For the details of the User Math capability, refer to the 4195A's Operation Manual.

SECTION 5
MANUAL CHANGES

5-1. INTRODUCTION

This section contains information for adapting this manual to instruments to which its contents do not directly apply. The following paragraphs explain how to adapt this manual to older instruments which have a serial prefix/number lower than that given on the title page.

5-2. MANUAL CHANGES

To adapt this manual to your instrument, refer to Table 5-1 and make all of the manual changes listed opposite your instrument's serial number. Perform these changes in the sequence given.

If your instrument serial number is not listed on the title page of this manual or in Table 5-1, it may be documented in a yellow MANUAL CHANGES supplement. For additional information about serial number coverage, refer to UNITS COVERED BY THIS OPERATION NOTE in Section 1.

Table 5-1. Manual Changes by Serial Number

Serial Prefix or Number	Make Manual Changes



SECTION 6

SERVICE

6-1. INTRODUCTION

This section provides the information required to service the 41951A Impedance Test Kit. The Schematic Diagram, and the Replaceable Parts List are included.

6-2. SCHEMATICS AND REPLACEABLE PARTS

The 41951A consists of the assemblies listed in Table 1-2. Any assembly except for the Impedance Test Adapter, can be replaced by the assembly level, when it is damaged. The part numbers are shown in Figure 1-1, and Table 1-2.

The Impedance Test Adapter includes some replaceable parts. Figure 6-1 shows the schematic diagram of the Impedance Test Adapter. The replaceable parts mounted on the board in the Impedance Test Adapter, is listed in Table 6-1. The part's locations are shown in Figure 6-2.

NOTE

Parts that are not listed in Table 6-1 cannot be replaced, and the board assembly cannot be replaced. So if any of parts which are not listed are damaged, the Impedance Test Adapter must be replaced at the assembly level.

Table 6-2 shows an exploded view of the APC-7 connector mounted on the Impedance Test Adapter's top cover, and lists the APC-7 connector's parts. Table 6-3 lists the Impedance Test Adapter's replaceable parts except for those on the board, and shows their location.

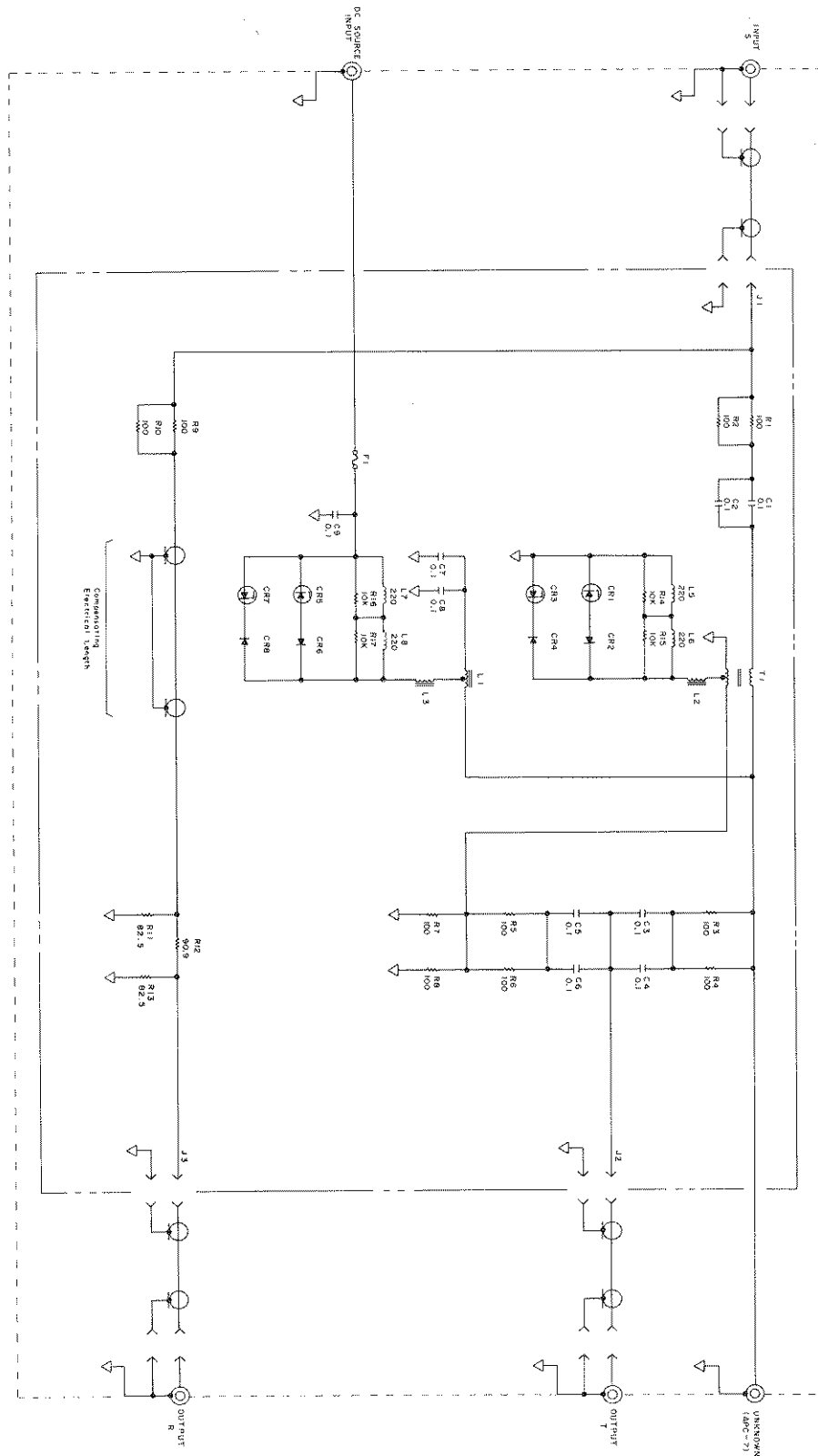


Figure 6-1. Schematic Diagram of the Impedance Test Adapter

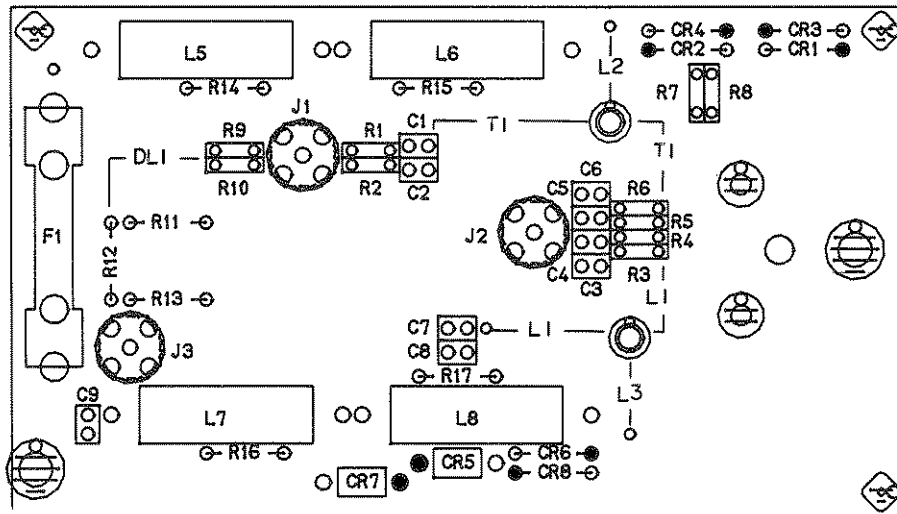
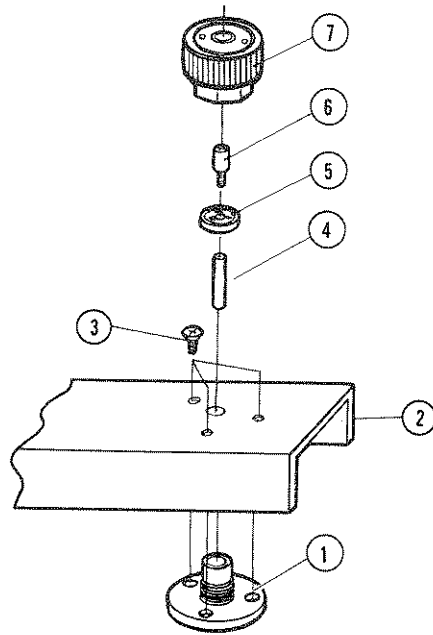


Figure 6-2. Parts Locations

Table 6-1. Replaceable Parts List

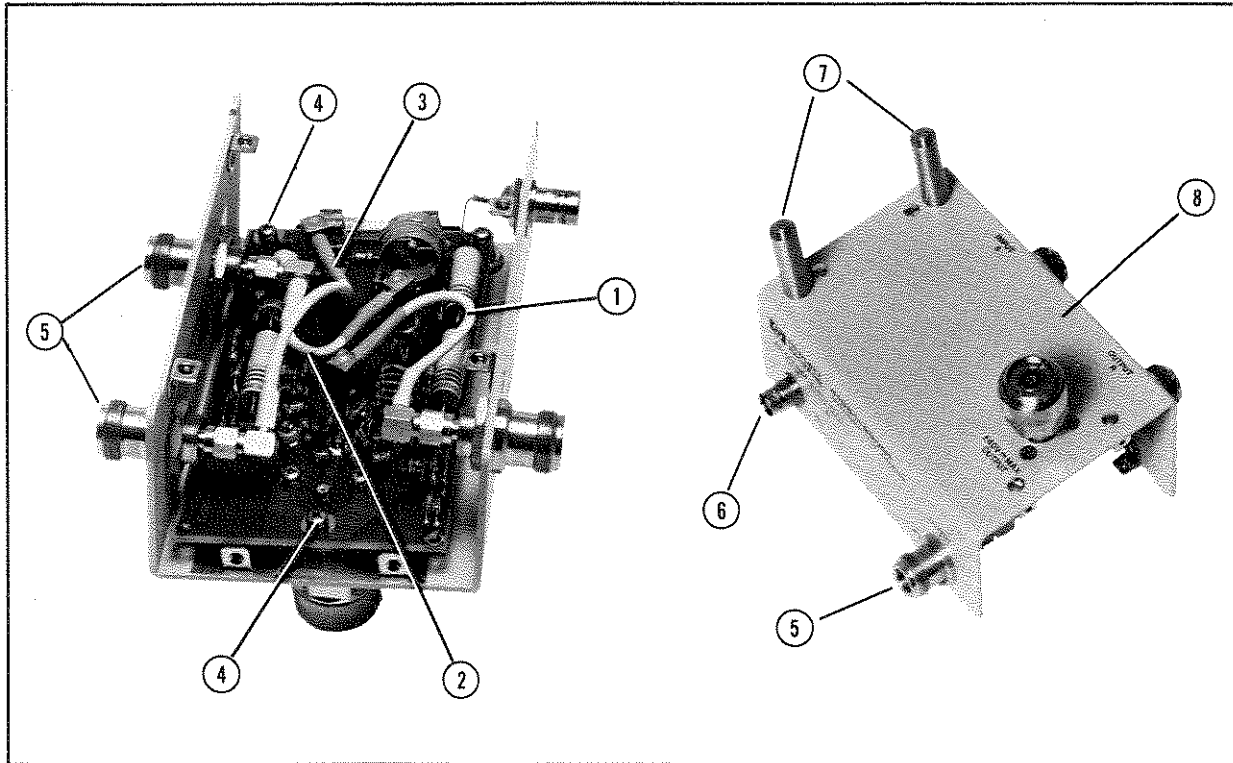
Reference Designator	HP Part Number	Description
C1	0160-0576	Capacitor 1 μ F
C2	0160-0576	Capacitor 1 μ F
C4	0160-0576	Capacitor 1 μ F
C5	0160-0576	Capacitor 1 μ F
C7	0160-0576	Capacitor 1 μ F
C8	0160-0576	Capacitor 1 μ F
C9	0160-0576	Capacitor 1 μ F
CR1	1902-0953	Diode Zener
CR2	1901-0050	Diode Switching
CR3	1902-0953	Diode Zener
CR4	1901-0050	Diode Switching
CR5	1902-0551	Diode Zener
CR6	1901-0050	Diode Switching
CR7	1902-0551	Diode Zener
CR8	1901-0050	Diode Switching
F1	2110-0001	Fuse 1 A 250 V
J1	1250-0835	Connector-RF SMC
J2	1250-0835	Connector-RF SMC
J3	1250-0835	Connector-RF SMC
L5	5080-3244	Inductor 220 μ H
L6	5080-3244	Inductor 220 μ H
L7	5080-3244	Inductor 220 μ H
L8	5080-3244	Inductor 220 μ H
R1	0698-7212	Resistor 100 Ω
R2	0698-7212	Resistor 100 Ω
R13	0757-0399	Resistor 82.5 Ω
R14	0757-0442	Resistor 10 k Ω
R15	0757-0442	Resistor 10 k Ω
R16	0757-0442	Resistor 10 k Ω
R17	0757-0442	Resistor 10 k Ω

Table 6-2. APC-7 Connector



Reference Designator	HP Part Number	Qty.	Description
1	41951-21001	1	Flange
2	41951-04001	1	Top Cover
3	0515-0914	3	Screw
4	41951-23001	1	Center Conductor
5	5040-0306	1	Insulator
6	1250-0816	1	Connector-RF
7	1250-1466	1	Connector-RF APC-7 (with a cap)

Table 6-3. Replaceable Parts List (except for board)



Reference Designator	HP Part Number	Qty.	Description
1	41951-61604	1	Cable Assembly
2	41951-61601	1	Cable Assembly
3	41951-61603	1	Cable Assembly
4	0515-1550	5	Screw
5	1250-1811	3	N(f)-SMA(f) Adapter (with Nut and Washer)
6	1250-0083	1	Connector-RF BNC
	2190-0016	1	Washer
	2950-0001	1	Nut
7	41951-24001	2	Post
	2190-0084	2	Washer
	2950-0006	2	Nut
8	41951-04001	1	Top Cover
	41951-04002	1	Bottom Cover
	0515-0914	8	Screw
	6960-0016	3	Plug-Hole



SALES & SUPPORT OFFICES

Arranged alphabetically by country



Product Line Sales/Support Key

- A Analogue
- CM Computers
- C Complete Systems
- E Electronic Instruments & Measurement Systems
- F Field Products
- P Personal Computer Products
- S Sales only for specific products
- Support only for specific products

IMPORTANT: These persons do not represent product line capability. They are not sales or support staff for the products within a line, or do not have direct year-to-year sales or support information regarding locations where HP support is available for specific products.

HEADQUARTERS OFFICES

If there is no office listed for your area, contact one of these headquarters offices.

NORTH/CENTRAL AFRICA

Cameroon, Australia
Capital Territory
Office
Hewlett-Packard Australia Ltd.
Thames House, Fern Hill,
BRIELA, C.T. 2817
P.O. Box 251
JAMBOURNA, A.C.T. 2614
Tel: 61 6099
Telex: 225550
Cable: HEPPACAD Canberra
C.O.M.E.L.P.

Melbourne, Victoria

Office
Hewlett-Packard Australia Ltd.
314 Joseph Street
P.O. Box 221
BLAKELEIGH, Victoria 3100
Tel: 03 985-9855
Telex: 31-024
Cable: HEPPACAD Melbourne
A.C.M.E.L.P.

Perth, Western Australia

Office
Hewlett-Packard Australia Ltd.
281 Slings Highway
CLAREMONT, W.A. 6017
P.O. Box 251
JAMBOURNA, A.C.T. 2614
Tel: 61 8099
Telex: 225550
Cable: HEPPACAD Canberra
C.O.M.E.L.P.

Sydney, New South Wales

Office
Hewlett-Packard Australia Ltd.
281 Slings Highway
CLAREMONT, W.A. 6017
P.O. Box 251
JAMBOURNA, A.C.T. 2614
Tel: 61 8099
Telex: 225550
Cable: HEPPACAD Canberra
C.O.M.E.L.P.

Wellington, New Zealand

Office
Hewlett-Packard Australia Ltd.
281 Slings Highway
CLAREMONT, W.A. 6017
P.O. Box 251
JAMBOURNA, A.C.T. 2614
Tel: 61 8099
Telex: 225550
Cable: HEPPACAD Canberra
C.O.M.E.L.P.

South East Europe

Hewlett-Packard S.A.
World Trade Center
19 Avenue Louise, 1050
1179 Brussels, BELGIUM, Switzerland
Tel: 32 225 95 53
Telex: 2722 95 HP

MEDITERRANEAN AND MIDDLE EAST

Hewlett-Packard S.A.
Mediterranean and Middle East
Operations
Atina Center
P.O. Box 251
JAMBOURNA, A.C.T. 2614
Tel: 61 8099
Telex: 225550
Cable: HEPPACAD Canberra
C.O.M.E.L.P.

UNITED KINGDOM

Hewlett-Packard Ltd.
Newfile House
Cassham Road, WINDINGHAM
Surrey, ENGLAND
Tel: 44 1923 7320
Telex: 844855

EASTERN USA

Hewlett-Packard Co.
4 Choke Cherry Road
ROCKVILLE, MD 20850
Tel: 301 948-0272

MIDWESTERN USA

Hewlett-Packard Co.
5021 Tollway Drive
SOLINGBROOK, IL 60088
Tel: (312) 655-9000

SOUTHERN USA

Hewlett-Packard Co.
2000 South Park Place
ATLANTA, GA 30359
Tel: 404 252-1590

WESTERN USA

Hewlett-Packard Co.
5311 Lakeshore Blvd.
SANTA CLARA, CA 95051
Tel: (415) 354-5000

OTHER INTERNATIONAL AREAS

Hewlett-Packard Co.
International Headquarters
3495 Deer Creek Road
FREDERICK, CA 94505
Tel: 415 851-1021

ALGERIA

Bureau de l'Algerie
Hewlett-Packard Alger
10 rue de l'Algerie
ALGERIA
Tel: 213 61 1910

ANGOLA

Hewlett-Packard Angola
Rua Barbosa de Gusmano
Rua Barbosa de Gusmano, 41-107,
LISBOA, PORTUGAL
Tel: 351 21 847 100

ARGENTINA

Hewlett-Packard Argentina S.A.
Montevideo 2140/50
1428 BARRIO AGUIAR
Tel: 54 1 629 249

ARMENIA

Hewlett-Packard Armenia
P.O. Box 251
JAMBOURNA, A.C.T. 2614
Tel: 61 8099
Telex: 225550
Cable: HEPPACAD Canberra
C.O.M.E.L.P.

AUSTRALIA

Headquarters
Office
Hewlett-Packard Australia Ltd.
153 Greenway Drive
HAMBURG, S.A. 5885
Tel: 41 527 5111

BANGLADESH

Hewlett-Packard Bangladesh
A.C.M.E.L.P.

Brazil, Sao Paulo

Office
Hewlett-Packard Australia Ltd.
10 Payne Road
HAMBURG, S.A. 5885
Tel: 41 527 5111

Canada

Hewlett-Packard Canada Ltd.
1000 Steeles Ave. East
Unit 100, MARKHAM, ONTARIO
L3R 9V7
Tel: 416 491-1111

Chile

Hewlett-Packard Chile S.A.
P.O. Box 251
JAMBOURNA, A.C.T. 2614
Tel: 61 8099
Telex: 225550
Cable: HEPPACAD Canberra
C.O.M.E.L.P.

Colombia

Hewlett-Packard Colombia S.A.
P.O. Box 251
JAMBOURNA, A.C.T. 2614
Tel: 61 8099
Telex: 225550
Cable: HEPPACAD Canberra
C.O.M.E.L.P.

Costa Rica

Hewlett-Packard Costa Rica S.A.
P.O. Box 251
JAMBOURNA, A.C.T. 2614
Tel: 61 8099
Telex: 225550
Cable: HEPPACAD Canberra
C.O.M.E.L.P.

Cuba

Hewlett-Packard Cuba S.A.
P.O. Box 251
JAMBOURNA, A.C.T. 2614
Tel: 61 8099
Telex: 225550
Cable: HEPPACAD Canberra
C.O.M.E.L.P.

Czechoslovakia

Hewlett-Packard Czechoslovakia S.A.
P.O. Box 251
JAMBOURNA, A.C.T. 2614
Tel: 61 8099
Telex: 225550
Cable: HEPPACAD Canberra
C.O.M.E.L.P.

Denmark

Hewlett-Packard Denmark A/S
P.O. Box 251
JAMBOURNA, A.C.T. 2614
Tel: 61 8099
Telex: 225550
Cable: HEPPACAD Canberra
C.O.M.E.L.P.

France

Hewlett-Packard France S.A.
P.O. Box 251
JAMBOURNA, A.C.T. 2614
Tel: 61 8099
Telex: 225550
Cable: HEPPACAD Canberra
C.O.M.E.L.P.

Germany

Hewlett-Packard Germany GmbH
P.O. Box 251
JAMBOURNA, A.C.T. 2614
Tel: 61 8099
Telex: 225550
Cable: HEPPACAD Canberra
C.O.M.E.L.P.

Greece

Hewlett-Packard Greece S.A.
P.O. Box 251
JAMBOURNA, A.C.T. 2614
Tel: 61 8099
Telex: 225550
Cable: HEPPACAD Canberra
C.O.M.E.L.P.

India

Hewlett-Packard India Pvt. Ltd.
P.O. Box 251
JAMBOURNA, A.C.T. 2614
Tel: 61 8099
Telex: 225550
Cable: HEPPACAD Canberra
C.O.M.E.L.P.

Indonesia

Hewlett-Packard Indonesia S.A.
P.O. Box 251
JAMBOURNA, A.C.T. 2614
Tel: 61 8099
Telex: 225550
Cable: HEPPACAD Canberra
C.O.M.E.L.P.

Italy

Hewlett-Packard Italia S.p.A.
P.O. Box 251
JAMBOURNA, A.C.T. 2614
Tel: 61 8099
Telex: 225550
Cable: HEPPACAD Canberra
C.O.M.E.L.P.

Japan

Hewlett-Packard Japan Ltd.
P.O. Box 251
JAMBOURNA, A.C.T. 2614
Tel: 61 8099
Telex: 225550
Cable: HEPPACAD Canberra
C.O.M.E.L.P.

Korea

Hewlett-Packard Korea S.A.
P.O. Box 251
JAMBOURNA, A.C.T. 2614
Tel: 61 8099
Telex: 225550
Cable: HEPPACAD Canberra
C.O.M.E.L.P.

Malaysia

Hewlett-Packard Malaysia S.A.
P.O. Box 251
JAMBOURNA, A.C.T. 2614
Tel: 61 8099
Telex: 225550
Cable: HEPPACAD Canberra
C.O.M.E.L.P.

Mexico

Hewlett-Packard Mexico S.A.
P.O. Box 251
JAMBOURNA, A.C.T. 2614
Tel: 61 8099
Telex: 225550
Cable: HEPPACAD Canberra
C.O.M.E.L.P.

Netherlands

Hewlett-Packard Netherlands B.V.
P.O. Box 251
JAMBOURNA, A.C.T. 2614
Tel: 61 8099
Telex: 225550
Cable: HEPPACAD Canberra
C.O.M.E.L.P.

New Zealand

Hewlett-Packard New Zealand Ltd.
P.O. Box 251
JAMBOURNA, A.C.T. 2614
Tel: 61 8099
Telex: 225550
Cable: HEPPACAD Canberra
C.O.M.E.L.P.

Norway

Hewlett-Packard Norway A/S
P.O. Box 251
JAMBOURNA, A.C.T. 2614
Tel: 61 8099
Telex: 225550
Cable: HEPPACAD Canberra
C.O.M.E.L.P.

Philippines

Hewlett-Packard Philippines S.A.
P.O. Box 251
JAMBOURNA, A.C.T. 2614
Tel: 61 8099
Telex: 225550
Cable: HEPPACAD Canberra
C.O.M.E.L.P.

Poland

Hewlett-Packard Poland S.A.
P.O. Box 251
JAMBOURNA, A.C.T. 2614
Tel: 61 8099
Telex: 225550
Cable: HEPPACAD Canberra
C.O.M.E.L.P.

Portugal

Hewlett-Packard Portugal S.A.
P.O. Box 251
JAMBOURNA, A.C.T. 2614
Tel: 61 8099
Telex: 225550
Cable: HEPPACAD Canberra
C.O.M.E.L.P.

Romania

Hewlett-Packard Romania S.A.
P.O. Box 251
JAMBOURNA, A.C.T. 2614
Tel: 61 8099
Telex: 225550
Cable: HEPPACAD Canberra
C.O.M.E.L.P.

Spain

Hewlett-Packard Spain S.A.
P.O. Box 251
JAMBOURNA, A.C.T. 2614
Tel: 61 8099
Telex: 225550
Cable: HEPPACAD Canberra
C.O.M.E.L.P.

Sweden

Hewlett-Packard Sweden AB
P.O. Box 251
JAMBOURNA, A.C.T. 2614
Tel: 61 8099
Telex: 225550
Cable: HEPPACAD Canberra
C.O.M.E.L.P.

Switzerland

Hewlett-Packard Switzerland S.A.
P.O. Box 251
JAMBOURNA, A.C.T. 2614
Tel: 61 8099
Telex: 225550
Cable: HEPPACAD Canberra
C.O.M.E.L.P.

Taiwan

Hewlett-Packard Taiwan S.A.
P.O. Box 251
JAMBOURNA, A.C.T. 2614
Tel: 61 8099
Telex: 225550
Cable: HEPPACAD Canberra
C.O.M.E.L.P.

Thailand

Hewlett-Packard Thailand S.A.
P.O. Box 251
JAMBOURNA, A.C.T. 2614
Tel: 61 8099
Telex: 225550
Cable: HEPPACAD Canberra
C.O.M.E.L.P.

U.S.A.

Hewlett-Packard Co.
P.O. Box 251
JAMBOURNA, A.C.T. 2614
Tel: 61 8099
Telex: 225550
Cable: HEPPACAD Canberra
C.O.M.E.L.P.

U.S.S.R.

Hewlett-Packard U.S.S.R. S.A.
P.O. Box 251
JAMBOURNA, A.C.T. 2614
Tel: 61 8099
Telex: 225550
Cable: HEPPACAD Canberra
C.O.M.E.L.P.

Yugoslavia

Hewlett-Packard Yugoslavia S.A.
P.O. Box 251
JAMBOURNA, A.C.T. 2614
Tel: 61 8099
Telex: 225550
Cable: HEPPACAD Canberra
C.O.M.E.L.P.

Canada

Hewlett-Packard Canada Ltd.
1120-7700 Street
EDMONTON, Alberta T6C 1P2
Tel: (403) 486-6666
A.C.M.E.L.P.

Brazil

Hewlett-Packard (Canada) Ltd.
1911 Sheppard Ave. W.
TORONTO, ONTARIO
Tel: (416) 770-2277
A.C.M.E.L.P.

Costa Rica

Hewlett-Packard (Canada) Ltd.
171-1200 Douglas Street
VICTORIA, British Columbia V8S 1C1
Tel: (604) 381-5615
C

Denmark

Hewlett-Packard (Canada) Ltd.
1625 Meade Blvd.
WINNIPEG, Manitoba R2T 1R3
Tel: (204) 684-2777
A.C.M.E.L.P.

New Zealand

Hewlett-Packard (Canada) Ltd.
614 Main Street
MOUNTAIN VIEW, New Zealand
Tel: (06) 857-1001
A

Cyprus

Hewlett-Packard (Canada) Ltd.
P.O. Box 152
7, Alibonita Avenue
Nicosia, Cyprus
Tel: 358 2242-2400-19
Tel: 358 41-81-50
A

Greece

Hewlett-Packard (Canada) Ltd.
3025a Services Rd., Unit 903
SCARBOROUGH, Ontario M1V 3S2
Tel: (416) 493-6444
C.M.

India

Hewlett-Packard (Canada) Ltd.
4900 Highway 7
KINGSTON, Ontario K7M 5G4
Tel: (513) 334-2888
A

Indonesia

Hewlett-Packard (Canada) Ltd.
2550 Steeles Ave. E. Unit 218
LONDON, Ontario M8S 2B3
Tel: (416) 490-8111
A.C.M.E.L.P.

Japan

Hewlett-Packard (Canada) Ltd.
2875 Bayview Ave.
SCARBOROUGH, Ontario M1W 2K1
Tel: (416) 490-8111
A.C.M.E.L.P.

Malaysia

Hewlett-Packard (Canada) Ltd.
2875 Bayview Ave.
SCARBOROUGH, Ontario M1W 2K1
Tel: (416) 490-8111
A.C.M.E.L.P.

Netherlands

Hewlett-Packard (Canada) Ltd.
2875 Bayview Ave.
SCARBOROUGH, Ontario M1W 2K1
Tel: (416) 490-8111
A.C.M.E.L.P.

Portugal

Hewlett-Packard (Canada) Ltd.
2875 Bayview Ave.
SCARBOROUGH, Ontario M1W 2K1
Tel: (416) 490-8111
A.C.M.E.L.P.

Spain

Hewlett-Packard (Canada) Ltd.
2875 Bayview Ave.
SCARBOROUGH, Ontario M1W 2K1
Tel: (416) 490-8111
A.C.M.E.L.P.

Sweden

Hewlett-Packard (Canada) Ltd.
2875 Bayview Ave.
SCARBOROUGH, Ontario M1W 2K1
Tel: (416) 490-8111
A.C.M.E.L.P.

Switzerland

Hewlett-Packard (Canada) Ltd.
2875 Bayview Ave.
SCARBOROUGH, Ontario M1W 2K1
Tel: (416) 490-8111
A.C.M.E.L.P.

Taiwan

Hewlett-Packard (Canada) Ltd.
2875 Bayview Ave.
SCARBOROUGH, Ontario M1W 2K1
Tel: (416) 490-8111
A.C.M.E.L.P.

Thailand

Hewlett-Packard (Canada) Ltd.
2875 Bayview Ave.
SCARBOROUGH, Ontario M1W 2K1
Tel: (416) 490-8111
A.C.M.E.L.P.

U.S.A.

Hewlett-Packard Co.
P.O. Box 251
JAMBOURNA, A.C.T. 2614
Tel: 61 8099
Telex: 225550
Cable: HEPPACAD Canberra
C.O.M.E.L.P.

U.S.S.R.

Hewlett-Packard U.S.S.R. S.A.
P.O. Box 251
JAMBOURNA, A.C.T. 2614
Tel: 61 8099
Telex: 225550
Cable: HEPPACAD Canberra
C.O.M.E.L.P.

Yugoslavia

Hewlett-Packard Yugoslavia S.A.
P.O. Box 251
JAMBOURNA, A.C.T. 2614
Tel: 61 8099
Telex: 225550
Cable: HEPPACAD Canberra
C.O.M.E.L.P.

Canada

Hewlett-Packard Canada Ltd.
1120-7700 Street
EDMONTON, Alberta T6C 1P2
Tel: (403) 486-6666
A.C.M.E.L.P.

Brazil

Hewlett-Packard (Canada) Ltd.
1911 Sheppard Ave. W.
TORONTO, ONTARIO
Tel: (416) 770-2277
A.C.M.E.L.P.

Costa Rica

Hewlett-Packard (Canada) Ltd.
171-1200 Douglas Street
VICTORIA, British Columbia V8S 1C1
Tel: (604) 381-5615
C

Denmark

Hewlett-Packard (Canada) Ltd.
1625 Meade Blvd.
WINNIPEG, Manitoba R2T 1R3
Tel: (204) 684-2777
A.C.M.E.L.P.

New Zealand

Hewlett-Packard (Canada) Ltd.
614 Main Street
MOUNTAIN VIEW, New Zealand
Tel: (06) 857-1001
A

Cyprus

Hewlett-Packard (Canada) Ltd.
P.O. Box 152
7, Alibonita Avenue
Nicosia, Cyprus
Tel: 358 2242-2400-19
Tel: 358 41-81-50
A

Greece

Hewlett-Packard (Canada) Ltd.
3025a Services Rd., Unit 903
SCARBOROUGH, Ontario M1V 3S2
Tel: (416) 493-6444
C.M.

India

Hewlett-Packard (Canada) Ltd.
4900 Highway 7
KINGSTON, Ontario K7M 5G4
Tel: (513) 334-2888
A

Indonesia

Hewlett-Packard (Canada) Ltd.
2550 Steeles Ave. E. Unit 218
LONDON, Ontario M8S 2B3
Tel: (416) 490-8111
A.C.M.E.L.P.

Japan

Hewlett-Packard (Canada) Ltd.
2875 Bayview Ave.
SCARBOROUGH, Ontario M1W 2K1
Tel: (416) 490-8111
A.C.M.E.L.P.

Malaysia

Hewlett-Packard (Canada) Ltd.
2875 Bayview Ave.
SCARBOROUGH, Ontario M1W 2K1
Tel: (416) 490-8111
A.C.M.E.L.P.

Netherlands

Hewlett-Packard (Canada) Ltd.
2875 Bayview Ave.
SCARBOROUGH, Ontario M1W 2K1
Tel: (416) 490-8111
A.C.M.E.L.P.

###

SALES & SUPPORT OFFICES

Arranged alphabetically by country



Hawaii-Pacifi of Mexico, S.A. de C.V.
Moni Molino No. 299
Paseo de la Reforma 1000
Cuauhtemoc, Mexico
Tel: 52-55-521-48-60
Telex: 0684 180 ECOMEX

Microcomputers Hawaii-Pacifi, S.A. de C.V.
Moni Molino No. 115
Lomas de Chapultepec, 11900
Mexico, D.F.
Tel: 52-55-521-48-60

Hawaii-Pacifi de Mexico, S.A. de C.V.
Moni Molino No. 111
Lomas de Chapultepec, 11900
Mexico, D.F.
Tel: 52-55-521-48-60

Hawaii-Pacifi de Mexico, S.A. de C.V.
Moni Molino No. 111
Lomas de Chapultepec, 11900
Mexico, D.F.
Tel: 52-55-521-48-60

MICROSUBSTITUTES OF OMAN
P.O. Box 201
Kadim Al-Baladi Industrial Estate
Muscat, Oman
Tel: 968-251-1111

SOUTH AFRICA
POWER-PACK SA Africa (Pty) Ltd.
P.O. Box 100
Newlands, Cape Province 7740
South Africa
Tel: 27-21-533-7954

PAKISTAN
Murphy & Company Ltd.
House No. 11, Street No. 10
Meezan Road, Durrani Chowk
Islamabad
Tel: 999-4343

Hawaii-Pacifi de Mexico, S.A. de C.V.
Moni Molino No. 111
Lomas de Chapultepec, 11900
Mexico, D.F.
Tel: 52-55-521-48-60

TAIWAN
Hawaii-Pacifi Taiwan Ltd.
111, Sec. 1, Roosevelt Rd.
Taipei, Taiwan
Tel: 886-2-271-1111

Hawaii-Pacifi Taiwan Ltd.
111, Sec. 1, Roosevelt Rd.
Taipei, Taiwan
Tel: 886-2-271-1111

Hawaii-Pacifi Taiwan Ltd.
111, Sec. 1, Roosevelt Rd.
Taipei, Taiwan
Tel: 886-2-271-1111

Massachusetts
Hawaii-Pacifi of Mexico, S.A. de C.V.
1775 Massachusetts Ave.
Boston, MA 02118
Tel: 617-865-2000

Michigan
Hawaii-Pacifi of Mexico, S.A. de C.V.
2945 Center Street
Livonia, MI 48150
Tel: 313-491-6555

Minnesota
Hawaii-Pacifi of Mexico, S.A. de C.V.
2945 Center Street
Livonia, MI 48150
Tel: 313-491-6555

YEMEN/ARABIA
Hawaii-Pacifi of Yemen/Arabia
P.O. Box 100
Sana'a, Yemen
Tel: 968-251-1111

YEMEN/ARABIA
Hawaii-Pacifi of Yemen/Arabia
P.O. Box 100
Sana'a, Yemen
Tel: 968-251-1111

MEXICO
Hawaii-Pacifi de Mexico, S.A. de C.V.
Moni Molino No. 111
Lomas de Chapultepec, 11900
Mexico, D.F.
Tel: 52-55-521-48-60

MEXICO
Hawaii-Pacifi de Mexico, S.A. de C.V.
Moni Molino No. 111
Lomas de Chapultepec, 11900
Mexico, D.F.
Tel: 52-55-521-48-60

THAILAND
Hawaii-Pacifi Thailand Ltd.
111, Sec. 1, Roosevelt Rd.
Taipei, Taiwan
Tel: 886-2-271-1111

THAILAND
Hawaii-Pacifi Thailand Ltd.
111, Sec. 1, Roosevelt Rd.
Taipei, Taiwan
Tel: 886-2-271-1111

Florida
Hawaii-Pacifi of Mexico, S.A. de C.V.
1775 Massachusetts Ave.
Boston, MA 02118
Tel: 617-865-2000

Florida
Hawaii-Pacifi of Mexico, S.A. de C.V.
1775 Massachusetts Ave.
Boston, MA 02118
Tel: 617-865-2000

California
Hawaii-Pacifi of Mexico, S.A. de C.V.
1775 Massachusetts Ave.
Boston, MA 02118
Tel: 617-865-2000

California
Hawaii-Pacifi of Mexico, S.A. de C.V.
1775 Massachusetts Ave.
Boston, MA 02118
Tel: 617-865-2000

California
Hawaii-Pacifi of Mexico, S.A. de C.V.
1775 Massachusetts Ave.
Boston, MA 02118
Tel: 617-865-2000

California
Hawaii-Pacifi of Mexico, S.A. de C.V.
1775 Massachusetts Ave.
Boston, MA 02118
Tel: 617-865-2000

PHILIPPINES
Hawaii-Pacifi Philippines Corp.
201 Filipinas, EDSA
Pasig, Rizal
Tel: 773-1111

PHILIPPINES
Hawaii-Pacifi Philippines Corp.
201 Filipinas, EDSA
Pasig, Rizal
Tel: 773-1111

INDONESIA
Hawaii-Pacifi Indonesia
P.O. Box 100
Jakarta, Indonesia
Tel: 62-21-533-7954

INDONESIA
Hawaii-Pacifi Indonesia
P.O. Box 100
Jakarta, Indonesia
Tel: 62-21-533-7954

INDONESIA
Hawaii-Pacifi Indonesia
P.O. Box 100
Jakarta, Indonesia
Tel: 62-21-533-7954

INDONESIA
Hawaii-Pacifi Indonesia
P.O. Box 100
Jakarta, Indonesia
Tel: 62-21-533-7954

INDONESIA
Hawaii-Pacifi Indonesia
P.O. Box 100
Jakarta, Indonesia
Tel: 62-21-533-7954

INDONESIA
Hawaii-Pacifi Indonesia
P.O. Box 100
Jakarta, Indonesia
Tel: 62-21-533-7954

INDONESIA
Hawaii-Pacifi Indonesia
P.O. Box 100
Jakarta, Indonesia
Tel: 62-21-533-7954

INDONESIA
Hawaii-Pacifi Indonesia
P.O. Box 100
Jakarta, Indonesia
Tel: 62-21-533-7954

NETHERLANDS
Hawaii-Pacifi Nederland B.V.
P.O. Box 100
Amsterdam, Netherlands
Tel: 31-20-533-7954

NETHERLANDS
Hawaii-Pacifi Nederland B.V.
P.O. Box 100
Amsterdam, Netherlands
Tel: 31-20-533-7954

NETHERLANDS
Hawaii-Pacifi Nederland B.V.
P.O. Box 100
Amsterdam, Netherlands
Tel: 31-20-533-7954

NETHERLANDS
Hawaii-Pacifi Nederland B.V.
P.O. Box 100
Amsterdam, Netherlands
Tel: 31-20-533-7954

NETHERLANDS
Hawaii-Pacifi Nederland B.V.
P.O. Box 100
Amsterdam, Netherlands
Tel: 31-20-533-7954

NETHERLANDS
Hawaii-Pacifi Nederland B.V.
P.O. Box 100
Amsterdam, Netherlands
Tel: 31-20-533-7954

NETHERLANDS
Hawaii-Pacifi Nederland B.V.
P.O. Box 100
Amsterdam, Netherlands
Tel: 31-20-533-7954

NETHERLANDS
Hawaii-Pacifi Nederland B.V.
P.O. Box 100
Amsterdam, Netherlands
Tel: 31-20-533-7954

NETHERLANDS
Hawaii-Pacifi Nederland B.V.
P.O. Box 100
Amsterdam, Netherlands
Tel: 31-20-533-7954

NETHERLANDS
Hawaii-Pacifi Nederland B.V.
P.O. Box 100
Amsterdam, Netherlands
Tel: 31-20-533-7954

NEW ZEALAND
Hawaii-Pacifi New Zealand Ltd.
P.O. Box 100
Auckland, New Zealand
Tel: 64-9-533-7954

NEW ZEALAND
Hawaii-Pacifi New Zealand Ltd.
P.O. Box 100
Auckland, New Zealand
Tel: 64-9-533-7954

NEW ZEALAND
Hawaii-Pacifi New Zealand Ltd.
P.O. Box 100
Auckland, New Zealand
Tel: 64-9-533-7954

NEW ZEALAND
Hawaii-Pacifi New Zealand Ltd.
P.O. Box 100
Auckland, New Zealand
Tel: 64-9-533-7954

NEW ZEALAND
Hawaii-Pacifi New Zealand Ltd.
P.O. Box 100
Auckland, New Zealand
Tel: 64-9-533-7954

NEW ZEALAND
Hawaii-Pacifi New Zealand Ltd.
P.O. Box 100
Auckland, New Zealand
Tel: 64-9-533-7954

NEW ZEALAND
Hawaii-Pacifi New Zealand Ltd.
P.O. Box 100
Auckland, New Zealand
Tel: 64-9-533-7954

NEW ZEALAND
Hawaii-Pacifi New Zealand Ltd.
P.O. Box 100
Auckland, New Zealand
Tel: 64-9-533-7954

NEW ZEALAND
Hawaii-Pacifi New Zealand Ltd.
P.O. Box 100
Auckland, New Zealand
Tel: 64-9-533-7954

NEW ZEALAND
Hawaii-Pacifi New Zealand Ltd.
P.O. Box 100
Auckland, New Zealand
Tel: 64-9-533-7954

SAUDI ARABIA
Hawaii-Pacifi Saudi Arabia
P.O. Box 100
Riyadh, Saudi Arabia
Tel: 968-251-1111

SAUDI ARABIA
Hawaii-Pacifi Saudi Arabia
P.O. Box 100
Riyadh, Saudi Arabia
Tel: 968-251-1111

SAUDI ARABIA
Hawaii-Pacifi Saudi Arabia
P.O. Box 100
Riyadh, Saudi Arabia
Tel: 968-251-1111

SAUDI ARABIA
Hawaii-Pacifi Saudi Arabia
P.O. Box 100
Riyadh, Saudi Arabia
Tel: 968-251-1111

SAUDI ARABIA
Hawaii-Pacifi Saudi Arabia
P.O. Box 100
Riyadh, Saudi Arabia
Tel: 968-251-1111

SAUDI ARABIA
Hawaii-Pacifi Saudi Arabia
P.O. Box 100
Riyadh, Saudi Arabia
Tel: 968-251-1111

SAUDI ARABIA
Hawaii-Pacifi Saudi Arabia
P.O. Box 100
Riyadh, Saudi Arabia
Tel: 968-251-1111

SAUDI ARABIA
Hawaii-Pacifi Saudi Arabia
P.O. Box 100
Riyadh, Saudi Arabia
Tel: 968-251-1111

SAUDI ARABIA
Hawaii-Pacifi Saudi Arabia
P.O. Box 100
Riyadh, Saudi Arabia
Tel: 968-251-1111

SAUDI ARABIA
Hawaii-Pacifi Saudi Arabia
P.O. Box 100
Riyadh, Saudi Arabia
Tel: 968-251-1111

SCOTLAND
Hawaii-Pacifi Scotland Ltd.
P.O. Box 100
Glasgow, Scotland
Tel: 44-1-533-7954

SCOTLAND
Hawaii-Pacifi Scotland Ltd.
P.O. Box 100
Glasgow, Scotland
Tel: 44-1-533-7954

SCOTLAND
Hawaii-Pacifi Scotland Ltd.
P.O. Box 100
Glasgow, Scotland
Tel: 44-1-533-7954

SCOTLAND
Hawaii-Pacifi Scotland Ltd.
P.O. Box 100
Glasgow, Scotland
Tel: 44-1-533-7954

SCOTLAND
Hawaii-Pacifi Scotland Ltd.
P.O. Box 100
Glasgow, Scotland
Tel: 44-1-533-7954

SCOTLAND
Hawaii-Pacifi Scotland Ltd.
P.O. Box 100
Glasgow, Scotland
Tel: 44-1-533-7954

SCOTLAND
Hawaii-Pacifi Scotland Ltd.
P.O. Box 100
Glasgow, Scotland
Tel: 44-1-533-7954

SCOTLAND
Hawaii-Pacifi Scotland Ltd.
P.O. Box 100
Glasgow, Scotland
Tel: 44-1-533-7954

SCOTLAND
Hawaii-Pacifi Scotland Ltd.
P.O. Box 100
Glasgow, Scotland
Tel: 44-1-533-7954

SCOTLAND
Hawaii-Pacifi Scotland Ltd.
P.O. Box 100
Glasgow, Scotland
Tel: 44-1-533-7954



Part No. 41951-90000

Printed in JAPAN

www.valuetronics.com