

METRAHIT | ULTRA

High Resolution TRMS System Multimeter

3-349-683-03

4/9.13

- Handheld digital multimeter with TRMS measurement including, amongst other measuring functions:
V AC TRMS, V AC+DC TRMS, V DC, A AC TRMS, A AC+DC TRMS, A DC, dB, Hz(V), Hz(A), Ω , V \rightarrow +, °C / °F (TC/RTD)
- Resolution of 310,000 digits, triple display, display illumination can be activated under difficult lighting conditions
- 1 kHz / -3 dB low-pass filter can be activated in the alternating voltage measuring ranges
- 1 nA to 10 A direct current measurement, 16 A short-term, current measurement with current clamp transformers and sensors (transformation ratio is accounted for by the display)
- Temperature measurement with Pt100/Pt1000 resistance thermometer
- Broad range capacitance measurement
- TRMS AC and AC + DC, 100 kHz bandwidth
- Measurement data memory for up to 300,000 measured values
- Instrument can be **remote controlled** via IR interface with optional accessory: USB X-TRA (Z216C)
- Instrument can be **remote controlled** via Bluetooth interface (M248B variant only)
- Connector jack for external power pack



CAT IV

Quality Management System


DQS certified per
DIN EN ISO 9001

German
Accreditation Body
D-K-15080-01-01

DAKKS Calibration Certificate
as Standard Feature


Applications

Instruments included in the so-called E and high-resolution series are extremely rugged, reliable digital multimeters with housings made of impact resistant ABS. With a resolution of 310,000 digits and roughly 30 different measuring functions, they've been developed for professional use.

Features

RMS Value with Distorted Waveform

The utilized measuring method allows for waveform independent RMS measurement (TRMS AC and AC+DC) for voltage (up to 100 kHz) and current (up to 10 kHz).

Activatable Filter for V AC Measurement

A 1 kHz low-pass filter can be activated if required, for example when measuring motor voltage at electronic frequency converters. The input signal is checked by a voltage comparator for dangerous voltages as long as the low-pass filter is activated. A high-voltage symbol appears at the display if dangerous voltage (> 45 V) is present.

Automatic / Manual Measuring Range Selection

Measured quantities are selected by means of a rotary switch and a function key. The measuring range is automatically matched to the measured values. The measuring range can also be selected and locked manually with a key.

Three Connector Jacks with Automatic Blocking Sockets (ABS) *

All current ranges are implemented via a single connector jack which prevents any possibility of operator error. Auto-ranging is available in all current measuring ranges.

Beyond this, the automatic blocking sockets prevent incorrect connection of the measurement cables, as well as selection of the wrong measured quantity. Danger to the user, the instrument and the device under test resulting from operator error is thus ruled out.

* Patented (patent no. DE 10 2005 062 624, US 7,439,725)

Overload Protection

Overload protection safeguards the instrument in all measuring functions for up to 600 V. Voltages of greater than 600 V and currents of greater than 10 or 16 A are indicated acoustically. Dangerous contact voltages are indicated when the 1 kHz low-pass filter has been activated.

FUSE appears at the display if the fuse for the current measuring input blows. Switching between high and low impedance measuring functions is disabled in the vent of dangerous contact voltage.

Measurement with Current Clamp Transformers and Sensors

Current clamp transformer and sensors are used for current measurements without interrupting the circuit under test, and for high amperages (> 16 A). The measured current value is automatically calculated and displayed for the user with the help of the adjustable clamp factor.

METRAHIT | ULTRA

High Resolution TRMS System Multimeter

Fast Acoustic Continuity Test

Testing for short circuiting and interruption is possible with the selector switch in the Ω position. The threshold value for acoustic signaling can be set to 1, 10, 20 ... 300 Ω in 10 Ω steps.

Automatic Storage of Measured Values *

The DATA function automatically saves the digitally displayed measured value after settling in. Acoustic signaling is also used to indicate whether the new measured value deviates from the initial reference value less or more than 0.1% of the measuring range.

* Patented

Storage of Min-Max Values

Comparable to the slave-pointer function of an analog instrument, the device saves the highest and lowest measured values after the Min-Max function has been activated or reset. These extreme values can be queried at the display.

Memory Mode Operation

The METRAHIT ULTRA is equipped with a quartz-movement synchronized measurement data memory (2 MB), which has enough capacity for up to 300,000 measured values depending upon configuration. This allows for use of the instrument as an autonomous real-time data logger.

Measurement data recording is executed either:

- Time-controlled with an adjustable storage interval ranging from 0.1 s to 9 hours
- Dependent upon measured value in the event of exceeded limit/delta value
- Automatically after the measured value settles in
- As an individual measured value by pressing a key

Memory content can be read out from a PC with the help of the interfaces mentioned below, as well as analyzed and documented with METRAWin 10 evaluation software.

Battery Charging Status – Power Saving Circuit

The battery charging status is indicated by means of four symbols. The device is switched off automatically if the measured value remains unchanged for a period of between 10 and 59 minutes (adjustable), and if none of the controls are activated during this time. Automatic shutdown can be disabled by switching the instrument to continuous operation. The standby mode for the infrared/Bluetooth interface can be deactivated.

Protective Cover for Harsh Conditions

The instrument is protected against damage in the event of impacts or dropping by means of a soft rubber cover with tilt stand and test probe holder. The rubber material also assures that the instrument does not wander if it is set up on a vibrating surface.

Data Interfaces

The device can be remote configured, and momentary and saved measurement data can be read out via the bidirectional infrared interface (M248B: additionally via Bluetooth interface). The USB X-TRA interface adapter is required for the infrared interface, and METRAWin 10 software is required for both interfaces (see accessories). The interface protocol is available upon request.

DAkKS Calibration Certificate

Each multimeter is individually adjusted, subjected to final inspection and calibrated. Adherence to the specification is confirmed by means of the included DAkKS calibration certificate, which is valid worldwide

(recognized by EA and ILAC). After the specified calibration interval has elapsed (recommended interval: 1 to 3 years), the multimeters can be recalibrated at any time in our own DAkKS calibration laboratory.

Applicable Regulations and Standards

IEC/EN 61010, part 1:2010/VDE 0411-1:2011	Safety requirements for electrical equipment for measurement, control and laboratory use
DIN EN 61326-1 VDE 0843-20-1	Electrical equipment for measurement, control and laboratory use – EMC requirements – Part 1: General requirements
DIN EN 60529 DIN VDE 0470, part 1	Test instruments and test procedures – degrees of protection provided by enclosures (IP code)

Included Functions

Function	METRAHIT ULTRA
Voltage, V_{DC} ($R_i = 10\text{ M}\Omega$)	✓
Voltage, V_{AC} TRMS ($R_i = 5\text{ M}\Omega$)	✓
Voltage, V_{AC+DC} TRMS ($R_i \geq 5\text{ M}\Omega$)	✓
Frequency, Hz @ V_{AC} , V_{AC+DC}	Up to 300 kHz
1 kHz low-pass filter	@ V_{AC} @ V_{AC+DC}
Bandwidth @ V_{AC+DC} or V_{AC}	100 kHz
Pulse frequency, MHz @ 5 V TTL	1 Hz to 1 MHz
Duty cycle as %	2.0% ... 98%
Voltage level measurement, dB	@ V_{AC} @ V_{AC+DC}
Resistance, Ω	✓
Continuity test where $I_{CONST} = 1\text{ mA}$	✓
Diode test where $I_{CONST} = 1\text{ mA}$	✓
Temp. measurement $^{\circ}\text{C}/^{\circ}\text{F}$ @ T_C	Type K
Temperature measurement $^{\circ}\text{C}/^{\circ}\text{F}$ R_{TD}	Pt100/Pt1000
Capacitance measurement in F	✓
Current, A_{DC}	300 μA / 3 mA
Current, A_{AC+DC} TRMS	30 mA/300 mA
Current, A_{AC} TRMS	3 A / 10 A (16 A)
Bandwidth @ A_{AC+DC} or A_{AC}	10 kHz
Frequency, Hz @ A_{AC} @ V_{AC+DC}	Up to 30 kHz
Measurement with current clamp with adjustable transformation ratio	∞ mV / A ∞ mA / A
Data logger function ¹ (memory)	16 MBit (2 MB)
Relative value measurement ΔREL	✓
Zero point	✓
Min / Max / data hold	✓
IR interface (38.4 kBd)	✓
Bluetooth interface (38.4 kBd)	M248B only
Power pack socket	✓
Rubber holster	✓
Fuse	10 A / 1000 V
Protection	IP 52
Measuring category	600 V CAT III 300 V CAT IV
DAkKS Calibration Certificate	✓

¹) 16 MBit = 2048 kByte = 300,000 measured values, sampling rate adjustable from 0.5 seconds to 9 hours

Scope of Delivery

- 1 Multimeter
- 1 KS17-2 cable set
- 2 Batteries, 1.5 V, type AA
- 1 Condensed operating instructions, English/German
- 1 CD ROM with operating instructions in English and German, as well as other available languages
- 1 DAkKS calibration certificate
- 1 Rubber holster

Extended, Voluntary Manufacturer's Guarantee

- 36 months for materials and workmanship
1 to 3 years for calibration (depending upon application)

METRAHIT | ULTRA

High Resolution TRMS System Multimeter

Characteristic Values

Meas. Function	Measuring Range	Resolution at Upper Range Limit			Input Impedance		Intrinsic Uncertainty under Reference Conditions			Overload Capacity ¹²	
		DC	AC/AC+DC				±(... % rdg + % MR + ... d)	±(... % rdg. + ... d)	±(... % rdg. + ... d)	Value	Time
		309,999	30,999	3099							
V	300 mV	1 µV	10 µV		>10 MΩ	> 5 MΩ // < 50 pF	0.02 + 0.005 + 10 with ZERO	0.5 + 30 ²	0.5 + 30	600V DC AC RMS Sinusoidal	Max. 10 sec.
	3 V	10 µV	100 µV		>10 MΩ	> 5 MΩ // < 50 pF	0.02 + 0.005 + 5	0.2 + 30 ¹	0.5 + 30		Cont.
	30 V	100 µV	1 mV		>10 MΩ	> 5 MΩ // < 50 pF	0.02 + 0.005 + 5				
	300 V	1 mV	10 mV		>10 MΩ	> 5 MΩ // < 50 pF	0.02 + 0.005 + 5				
	600 V	10 mV	100 mV		>10 MΩ	> 5 MΩ // < 50 pF	0.02 + 0.005 + 5	0.2 + 30	0.5 + 30		
					Display Range for Reference Voltage U _{REF} = 0.775 V			Intrinsic Uncertainty			
dB	0.3 V / 3 V ... 600 V~			0.01 dB	-42 dB ... + 57 dB			0.1 dB (U > 10% MR)		600 V AC RMS sine	Cont.
		DC	AC/AC+DC		Voltage drop at approx. range limit			~ ²	≈ ²		
A	300 µA	1 nA	10 nA		65 mV		0.05 + 0.02 + 5 with ZERO	0.5 + 30	0.5 + 30	0.7 A	Cont.
	3 mA	10 nA	100 nA		170 mV		0.05 + 0.01 + 5				
	30 mA	100 nA	1 µA		170 mV		0.02 + 0.01 + 5				
	300 mA	1 µA	10 µA		200 mV		0.1 + 0.05 + 5	0.7 + 30	0.7 + 30	10 A: ≤ 5 min. ^{10, 11} 16 A: ≤ 30 s ¹¹	
	3 A	10 µA	100 µA		150 mV		0.2 + 0.05 + 5 with ZERO				
	10 A	100 µA	1 mA		470 mV		0.2 + 0.05 + 5	0.5 + 30	0.5 + 30		
	Factor: 1:1/10/100/1000		Input		Input impedance						
A	0.03, 0.3, 3, 30 A		30 mA		Current measurement input (A socket)		See current measuring ranges for specification. Plus current transformer clamp error			Meas. input 0.7 A cont. 3 A: 5 min.	
	0.3, 3, 30, 300 A		300 mA								
	3/30/300/3000 A		3 A								
A	0.3, 3, 30, 300 A 3/30/300/3000 A		300 mV 3 V / 30 V		Voltage measurement input (V jack) Ri ≈ 5 MΩ/10 MΩ		See voltage measuring ranges for specification.			Meas. input 600 V TRMS	
Ω					Open-circuit voltage	Measuring current at range limit	±(... % rdg. + % MR ... d)			600 V DC AC RMS Sinusoidal	Max. 10 sec. (PTC)
	300 Ω	1 mΩ			< 2 V	Approx. 0.5 mA	0.05 + 0.01 + 5 with ZERO function active				
	3 kΩ	10 mΩ			< 2 V	Approx. 130 µA	0.05 + 0.01 + 5 with ZERO function active				
	30 kΩ	100 mΩ			< 2 V	Approx. 20 µA	0.05 + 0.01 + 5				
	300 kΩ	1 Ω			< 2 V	Approx. 2 µA	0.05 + 0.01 + 5				
	3 MΩ	10 Ω			< 2 V	Approx. 1 µA	0.1 + 0.02 + 5				
30 MΩ	100 Ω			< 2 V	Approx. 200 nA	1 + 0.2 + 5					
di)	300 Ω	—		0.1 Ω	< 4.5 V	Approx. 1 mA const.	1 + 5 with ZERO function active			600 V	Max. 10 sec.
→	4,5 V ³	—		1 mV	< 6 V	Approx. 1 mA const.	0.2 + 3			600 V	Max. 10 sec.
					Discharge resistance	U ₀ max	±(... % rdg. + ... d) ⁴				
F	3 nF	—	—	1 pF	1 MΩ	2 V	2 + 15 with ZERO function active		600 V DC AC RMS sine	Max. 10 s	
	30 nF	—	—	10 pF	1 MΩ	2 V	1 + 6 with ZERO function active				
	300 nF	—	—	100 pF	100 kΩ	2 V	1 + 6				
	3 µF	—	—	1 nF	100 kΩ	2 V					
	30 µF	—	—	10 nF	10 kΩ	2 V					
	300 µF	—	—	100 nF	2.5 kΩ	2 V	5 + 6				
3 mF	—	—	1 µF		2 V						
Hz (V)	300 Hz	0.001 Hz				f _{min} ⁵	±(... % rdg. + ... d)			Hz (V) ⁶ , Hz(A>C) ⁶ 600 V Hz (A): ⁷	Max. 10 sec.
Hz (A)	3 kHz	0.01 Hz				5 Hz	Hz(V) 0.05 + 2 ⁸ Hz(A) 0.05 + 3 ⁸				
Hz (A>C)	30 kHz	0.1 Hz				10 Hz					
Hz (V)	300 kHz	1 Hz									
MHz	300 Hz to 1 MHz	0.01 ...100 Hz				1 Hz	> 3 V ... 5 V		600 V	Max. 10 sec.	
%	2.00 to 98.00%		—	0.01%	15 Hz ... 1 kHz		0.1 MR ± 10 d	> 3 V ... 5 V	600 V	Max. 10 sec.	
	5.00 to 95.00%		—	0.01%	1 ... 10 kHz		0.1 MR per kHz ± 10 d	> 3 V ... 5 V			
°C/°F							±(... % rdg. + ... d)				
	Pt100 Pt1000 K (NiCr-Ni)	-200.0 ... +100.0 °C + 100.0 ... + 850.0 °C -270.0 ... +1372.0 °C	0.1 K				0.3 + 10 ⁹		600 V DC/AC RMS sine	Max. 10 sec.	
						1% + 2.0 K ⁹					
	Internal temp. measurement	-10 ... +80 °C	0.1 K		Auxiliary display in ampere range		±2 K				

¹ Specified accuracy valid as of 1% of the measuring range

² Specified accuracy valid as of 2% of the measuring range

³ Display of up to max. 4.5 V, above which overload display appears: "OL"

⁴ Applies to measurements at film capacitors during battery operation

⁵ Lowest measurable frequency for sinusoidal measuring signals symmetrical to the zero point

⁶ Overload capacity of the voltage measurement input:
power limiting: frequency x voltage max. 3 x 10⁶ V x Hz for U > 100 V

⁷ Overload capacity of the current measurement input: see current measuring ranges for max. current values.

⁸ Input sensitivity, sinusoidal signal: 10% to 100% of voltage/current measuring range; in the 300 kHz range the specified intrinsic uncertainty applies as from 15% of MR

⁹ Plus sensor deviation

¹⁰ As of a measured value of 7 A, measurement is limited to an ambient temperature of 30 °C or a maximum duration of 5 minutes.

¹¹ Off-time > 30 min. and T_A ≤ 40 °C after a 10 or 16 A measurement

¹² At 0 ° ... + 40 °C

Key: d = digit(s), MR = measuring range, rdg. = reading (measured value)

METRAHIT | ULTRA

High Resolution TRMS System Multimeter


Internal Measured Value Storage

Memory capacity 16 MBit for approx. 300,000 measured values with indication of date and time

Power Supply

Battery 2 ea. 1.5 V mignon cell (2 ea. size AA)
Alkaline manganese per IEC LR6
(2 ea. 1.2 V NiMH rechargeable battery also possible)

Service life With alkaline manganese: approx. 200 hrs.

Battery indicator Battery capacity display with battery symbol in 4 segments: .
Querying of momentary battery voltage via menu function.

Power OFF function The multimeter is switched off automatically:
– If battery voltage drops to below approx. 1.8 V
– If none of the keys or the rotary switch are activated for an adjustable duration (10 to 59 min.) and the multimeter is not in the continuous operation mode

Power pack socket If the NA X-TRA power pack has been plugged into the instrument, the installed batteries are disconnected automatically. Rechargeable batteries can only be recharged externally.

Acoustic Signals

For voltage Above 600 V in the 600 V range: intermittent (250 ms on, 250 ms off)

For current
– Above 10 A: intermittent signal
– Above 16 A: continuous signal
– For displayed temperature > 50 °C

Fuse

Fuse link FF (UR) 10 A/1000 V AC/DC, 10 x 38 mm,
Switching capacity: 30 kA at 1000 V AC/DC,
protects the current measurement input in the 300 µA through 10 A ranges

Electrical Safety

per IEC 61010-1:2010/VDE 0411-1:2011

Protection class	II	
Measuring category	CAT III	CAT IV
Operating voltage	600 V	300 V
Pollution degree	2	
Test Voltage	5.2 kV~	

Electromagnetic Compatibility (EMC)

Interference emission EN 610326-1:2006 class B
Interference immunity EN 610326-1:2006
EN 610326-2-1:2006

Display

Transreflective LCD panel (65 mm x 36 mm) with display of up to 3 measured values, unit of measure, type of current and various special functions.



Background illumination

Background illumination is switched off approximately 1 minute after it has been activated.

Digital

Display / char. height 7-segment characters
Main display: 13 mm
Auxiliary display: 7.5 mm

Number of places 309,999 steps

Overflow display "OL" is displayed for ≥ 310,000 digits

Polarity display "–" (minus sign) is displayed if plus pole is connected to "⊥"

Measuring rate 10 or 40 measurements per second with the Min-Max function except for the capacitance and frequency measuring functions

Refresh Rate 2 times per second, every 500 ms

Ambient Conditions

Accuracy range 0 °C to +40 °C

Operating temperature range T_A –100 °C to +50 °C *

Storage temp. range –25 °C to +70 °C (without batteries)

Relative humidity 40 to 75%, no condensation allowed

Elevation To 2000 m

Deployment Indoors, except within specified ambient conditions

* Exception: current > 10 A to 16 A, operation at up to 40 °C

Mechanical Design

Housing Impact resistant plastic (ABS)

Dimensions 200 x 87 x 45 mm (without rubber holster)

Weight Approx. 0.4 kg with batteries

Protection Housing: IP 52 (pressure equalization by means of the housing)
Sockets: IP 20

Table Excerpt Regarding Significance of IP Codes

IP XY (1 st digit X)	Protection Against Foreign Object Entry	IP XY (2 nd digit Y)	Protection Against Penetration by Water
2	≥ 12.5 mm dia.	0	Not protected
5	Dust protected	2	Dripping (at 15° angle)

METRAHIT | ULTRA

High Resolution TRMS System Multimeter

Accessories for Operation at a PC

Interface adapter for USB connection

The following functions can be executed with the USB X-TRA bidirectional interface adapter:

- Configure the **METRAHIT** multimeter from a PC.
- Transmit live measurement data to the PC.
- Read data out of memory at the **METRAHIT** multimeter.

The adapter does not require a separate power supply.

Its baud rate is 38,400 baud.

A CD ROM is included which contains current drivers for Windows operating systems.



METRAWin®10/METRAHit® software

METRAWin®10/METRAHit®PC software is a multilingual, measurement data logging program for recording, visualizing, evaluating and documenting measured values with reference to time from **METRAHIT** E series multimeters.

Communications between the PC and the measuring instrument(s) is established via available interface adapters.

One or more of the following operating modes are possible, depending on device and interface type (infrared or Bluetooth):

• Device Configuration

Remote configuration and querying of device-specific functions and parameters, for example measuring function, measuring range and memory parameters. Frequently used device settings can be saved to configuration files for easy recall.

• Online Recording of Measurement Data

Read-in, display and recording of momentarily measured data from the interconnected device

- Measuring channels up to 10
- Start recording Manual, triggered by measured value, time triggered
- Recording mode
 - > Time controlled with sampling interval of (0.05 s* ...) 1 s ... 60 min.
 - > manually controlled
 - > measured value controlled in the event of exceeded limit/delta value
- Recording duration: max. 10 million intervals

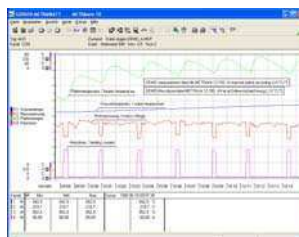
* Depending upon device type, measuring function, number of measuring channels and communication mode (e.g. via modem), sample intervals of less than 1 s cannot be used.

• Reading Out and Visualizing Stored Data

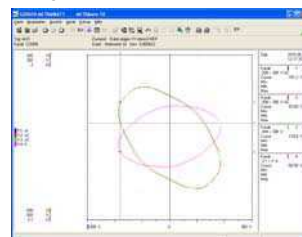
If supported by the device: read-in and display of offline data recorded to device memory

For purposes of analysis, data recorded online or read in from the device's memory can be displayed in various formats:

Y(t) Recorder Display for Up to 6 Channels



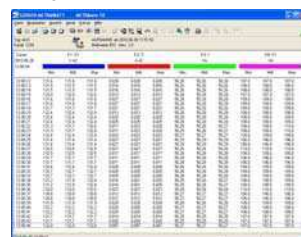
XY Recorder Display for Up to 4 Channels



Multimeter Display for Up to 4 Channels



Tabular Display for Up to 10 Channels



System Requirements

METRAWin 10 (as of version 5.3) can be run on IBM compatible PCs with Microsoft Windows® XP, Vista (32/64 bit) or 7 (32/64 bit).

METRAHIT | ULTRA

High Resolution TRMS System Multimeter

Order Information

Designation	Type	Article number
TRMS Multimeter for direct, alternating and pulsating current measurement (TRMS values), direct and via current clamp transformers and sensors in consideration of transformer ratios, frequency and resistance measurement, continuity test, diode measurement, temperature measurement with type K thermocouples, triple digital display with a resolution of 310,000 digits, measuring categories: 300 V/CAT IV, 600 V/CAT III, including KS17-2 measurement cable set, two mignon batteries, condensed operating instructions, CD ROM, DAkkS calibration certificate	METRAHIT ULTRA	M248A
Same as M248A but additionally with Bluetooth interface	METRAHIT ULTRA BT	M248B
Accessories for operation at a PC		
Bidirectional interface adapter, IR-USB	USB X-TRA	Z216C
METRAwin 10 software	METRAwin 10	GTZ3240000R0001
Accessories for Temperature Measurement with Resistance Thermometer		
Pt100 temperature sensor for surface and immersion measurement, -40 to + 600 °C	Z3409	GTZ3409000R0001
Pt1000 temperature sensor for measurement in gases and liquids, -50 ... +220 °C	TF220	Z102A
Pt100 oven sensor, -50 ... +550 °C	TF550	GTZ3408000R0001
Ten adhesive Pt100 temperature sensors, -50 ... +550 °C	TS Chipset	GTZ3406000R0001
Replacement fuse		
Fuses (pack of 10)	FF (UR) 10 A / 1000 V AC/DC	Z109L
Power pack	NA X-TRA	Z218G
Rubber holster and carrying strap	GH X-TRA	Z104C
2 magnetic test probes with touch protection – set with magnetic holder, 5.5 mm measuring contact diameter, insulated, CAT III 1000 V / 4 A, temperature from -10 to 60 °C, holder power under standard conditions with flat head screws: 1200 g perpendicular to the contact surface; measuring instrument connection for multimeter via angled multilam plug	Set 1 – magnetic test probes	Z502U

Transport Accessories

HitBag Cordura Belt Pouch

For METRA HIT (with/without rubber holster)



HC30 hard case

For two multimeters (with an without rubber holster) and accessories



F836 ever-ready case for multimeter (without rubber holster) and accessories



F829 carrying pouch for multimeters (with and without protective rubber cover) and accessories



Designation	Type	Article number
Imitation leather carrying pouch for METRA HIT and METRAmax	F829	GTZ3301000R0003
Cordura belt pouch for METRA HIT and METRAport series multimeters	HitBag	Z115A
Imitation leather ever-ready case with cable compartment	F836	GTZ3302000R0001
Ever-ready case for 2 METRA HITs, 2 adapters and accessories	F840	GTZ3302001R0001
Hard case for one METRA HIT and accessories	HC20	Z113A
Hard case for two METRA HITs and accessories	HC30	Z113A

For additional information regarding accessories please refer to

- Measuring Instruments and Testers catalog
- www.gossenmetrawatt.com

METRAHIT | ULTRA

High Resolution TRMS System Multimeter

Current Measuring Accessories								
All current sensors and transformers are equipped with connection via 4 mm safety banana plugs.								
Type	Designation	Measuring Range	Meas. Category	Max. Cable Diameter	Transmission Ratio	Frequency Range	Intrinsic Uncertainty ±(% rdg. + ...)	Article Number
DC/AC current sensors with voltage output								
CP30	DC/AC current clamp sensor, with battery mode (30 h)	5 mA to 30 A (DC / AC pk)	300 V / CAT III	25 mm	100 mV/A	DC ... 20 kHz (-3 dB)	1% + 2 mA	Z201B
CP330	DC/AC current clamp sensor, with 2 measuring ranges, battery mode (50 h)	Range: 0.5 ... 30 A Range: 5 ... 300 A (DC / AC rms)	300 V / CAT III	25 mm	10 mV/A, 1 mV/A	DC ... 20 kHz (-3 dB)	1% + 50 mA 1% + 100 mA	Z202B
CP1100	DC/AC current clamp sensor, with 2 measuring ranges, battery mode (50 h)	Range: 0.5 ... 100 A Range: 5 ... 1000 A (DC / AC rms)	300 V / CAT III	32 mm	10 mV/A, 1 mV/A	DC ... 20 kHz (-1 dB)	1% + 100 mA 1% + 500 mA	Z203B
CP1800	DC/AC current clamp sensor, with 2 measuring ranges, battery mode (50 h)	Range: 0.5 ... 125 A Range: 5 ... 1250 A (DC / AC rms)	300 V / CAT III	32 mm	10 mV/A, 1 mV/A	DC ... 20 kHz (-1 dB)	1% + 100 mA 1% + 500 mA	Z204A
Z13B	DC/AC current clamp sensor, with 2 measuring ranges, battery mode (50 h)	0.2 ... 40 A~/60 A~; 0.5 ... 400 A~/600A~ (DC / AC rms)	300 V CAT IV	50 mm	10 mV/A, 1 mV/A	DC ... 65 Hz Up to 10 kHz	1.5% 2.0%	Z213B
AC Current Sensors with Voltage Output								
WZ12B	AC current clamp sensor	10 mA~ ... 100 A~	300 V CAT III	15 mm	100 mV/A	<u>45 ... 65</u> Up to 500 Hz	1.5% + 0.1 mA	Z219B
WZ12C	AC current clamp sensor with 2 measuring ranges	1 mA~ ... 15 A~, 1 ... 150 A ~	300 V CAT III	15 mm	1 mV/mA, 1 mV/A	<u>45 ... 65</u> Up to 400 Hz	3% + 0.15 mA, 2% + 0.1 A	Z219C
WZ11B	AC current clamp sensor with 2 measuring ranges	0.5 ... 20 A~, 5 ... 200 A ~	600 V CAT III	20 mm	100 mV/A, 10 mV/A	<u>30 ... 48 ... 65</u> Up to 500 Hz	1 to 3%	Z208B
Z3512A	AC current clamp sensor with 4 measuring ranges	1 mA ... 1/10/100/ 1000 A~	600 V CAT III	52 mm	1 V/A, 100 mV/A, 10 mV/A; 1 mV/A	<u>10 ... 48 ... 65</u> Up to 3 kHz	0.5 ... 3%, 0.2 to 1%	Z225A
METRAFLX3000	Flexible AC current sensor with 3 measuring ranges, battery mode (2000 h)	0.5 ... 30 A, 0.5 ... 300A, Range: 5 ... 3000A	1000 V CAT III 600 V CAT IV	176 mm	100 mV/A, 10 mV/A, 1 mV/A	10 Hz to 20 kHz	1% + 0.1 A 1% + 0.1 A 1% + 1 A	Z207E
METRA-FLEX 300M	Flexible, miniature AC current sensor with 3 measuring ranges, battery mode (150 h)	1 ... 3 A, 1 ... 30 A, 5 ... 300 A	1000 V CAT III 600 V CAT IV	50 mm	1 V/A, 100 mV/A, 10 mV/A	10 Hz to 100 kHz	1% + 0.2 A 1% + 0.2 A 1% + 1 A	Z207M
AC Current Transformers with Current Output								
WZ12A	AC current clamp transformer	15 ... 180 A ~	300 V CAT III	15 mm	1 mA/A	<u>45 ... 65</u> Up to 400 Hz	3%	Z219A
WZ12D	AC current clamp transformer	30 mA ... 150 A~	300 V CAT III	15 mm	1 mA/A	<u>45 ... 65</u> Up to 500 Hz	2.5% + 0.1 mA	Z219D
WZ11A	AC current clamp transformer	1 ... 200 A ~	600 V CAT III	20 mm	1 mA/A	<u>48 ... 65</u> Up to 400 Hz	1 to 3%	Z208A
Z3511	AC current clamp transformer	4 ... 500 A ~	600 V CAT III	30 ea. 63 mm	1 mA/A	<u>48 ... 65</u> Up to 1 kHz	3% + 0.4 A	GTZ351100 0R0001
Z3512	AC current clamp transformer	0.5 ... 1000 A ~	600 V CAT III	52 mm	1 mA/A	<u>30 ... 48 ... 65</u> Up to 5 kHz	0.5% ... 0.7%	GTZ351200 0R0001
Z3514	AC current clamp transformer	1 ... 2000 A ~	600 V CAT III	64 ea. 150 mm	1 mA/A	<u>30 ... 48 ... 65</u> Up to 5 kHz	0.5% + 0.1 A	GTZ351400 0R0001

Edited in Germany • Subject to change without notice • PDF version available on the Internet



GMC-I Messtechnik GmbH
Südwestpark 15
90449 Nürnberg • Germany

Phone: +49-911-8602-111
Fax: +49-911-8602-777
e-mail: info@gossenmetrawatt.com
www.gossenmetrawatt.com