

# A150 POWER AMPLIFIER

## 150 Watts RF Power For:

- Ultrasonic
- Testing
- Laboratory Use



## Featuring:

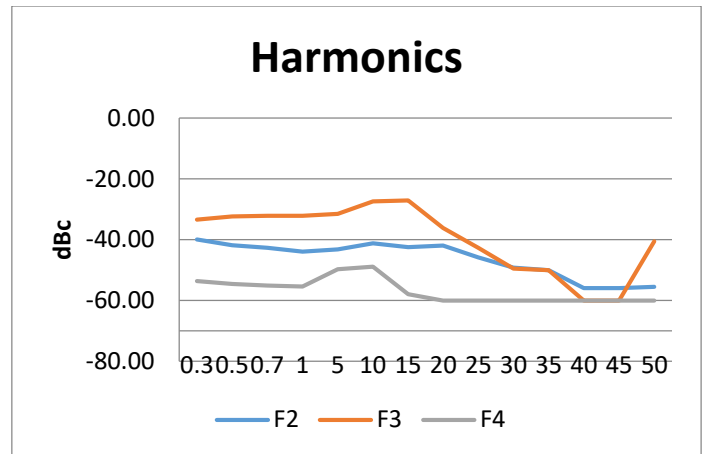
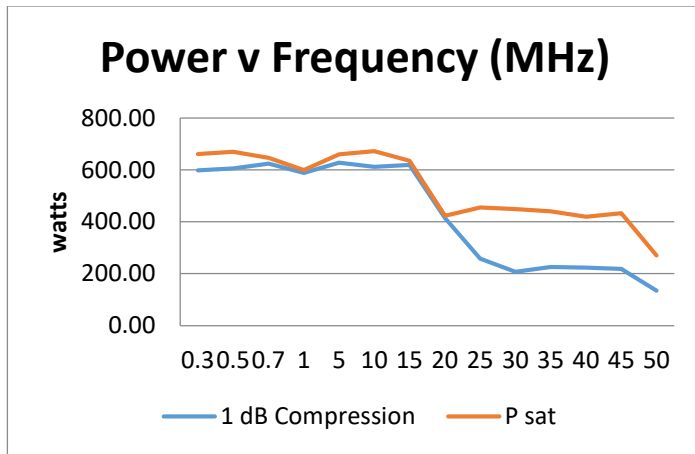
- 300 KHz – 35 MHz
- Power Measurement
  - Forward & Reflected
- Instantaneous Bandwidth
- Solid State Reliability
- Forced Air Cooling

### E&I A150 Specifications

<b>Class of Operation:</b>	Class A
<b>Frequency Coverage:</b>	300 KHz – 35 MHz
<b>Rated Power:</b>	150 Watts P1dB
<b>Saturated Power:</b>	250 Watts
<b>Power Gain:</b>	55 dB nominal
<b>Gain Flatness:</b>	+/- 1.5 dB
<b>Input Power for Rated Pout:</b>	0.5 mW Max
<b>Input Impedance / VSWR:</b>	50 $\Omega$ / 1.5:1 maximum
<b>Output Impedance / VSWR:</b>	50 $\Omega$ / 2:1 maximum
<b>Harmonic Level:</b>	< -25dBc @ 150 Watts
<b>Ruggedness:</b>	$\infty$ :1 VSWR
<b>Stability:</b>	Unconditional into any passive load
<b>Protection:</b>	Unit will withstand input signal of +13 dBm without damage (1.0 V rms) max.
<b>Third Order Intercept:</b>	IP3 ~ 60 dBm
<b>AC Input:</b>	100 – 240 Volts 47 – 63 Hz 8.8 A @ 120 V 4.4 A @ 240 V
<b>Temperature Range:</b>	0° – 40° C
<b>Cooling:</b>	Forced Air
<b>Dimensions (H x W x D):</b>	5.3 x 16.5 x 18.4 inches 134.5 x 420 x 467 mm
<b>Weight:</b>	48 lbs (21.8 kg)
<b>Connectors:</b>	BNC
<b>Rack Mounting:</b>	Optional
<b>RF Input Signal:</b>	AM, FM, SSB, Pulsed



# A150 POWER AMPLIFIER



#### Protection:

- Software Overdrive Limit: 250 Watts
- Software Reverse Power Limit: 200 Watts

#### Performance into 50 ohms

Input				Amplifier Gain Nominal dB	Output			
Input Power Watts	dBm	V p-p Volts	V rms Volts		Output Power dBm	Watts	V p-p Volts	V rms Volts
0.000079	-11.02	0.18	0.06	55	43.98	25.00	100.00	35.36
0.0003	-5.00	0.36	0.13	55	50.00	100.00	200.00	70.71
0.0005	-3.24	0.44	0.15	55	51.76	150.06	245.00	86.62
0.0006	-1.98	0.50	0.18	55	53.02	200.22	283.00	100.06



Electronics & Innovation, Ltd.  
 150 Research Blvd.  
 Rochester, NY 14623  
 Tel: 585-214-0598 / Fax: 585-214-0580  
 www.eandiltd.com