

# LGP 312 - PANCAKE LOAD CELL

The compression-only model LGP 312 has a load button which is fixed as an integral part of the load cell and cannot be removed or changed. This model must be used on a flat smooth surface to achieve rated specifications. The LGP 312 achieves impressive linearity, hysteresis and repeatable specifications for applications which include; tube mills, extruding processes and weighing. A variety of options are available including: 0-5Vdc, 4-20mA output, fatigue rating, high/low temperature compensation, hermetically sealed and ultra precision accuracy.

- **COMPRESSION ONLY**
- **LOW PROFILE**
- **WELDED STAINLESS STEEL**
- **VARIETY OF OPTIONS**
- **0-5 VDC OR 4-20 MA OUTPUT OPTION**

## SPECIFICATIONS

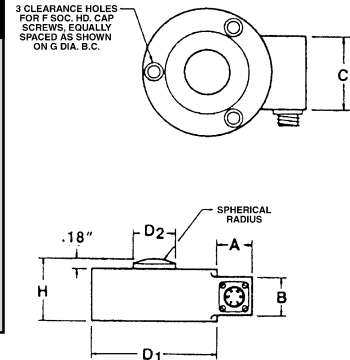
LOAD RANGES:	5 lb to 500,000 lb
LINEARITY:	5 lb to 25 lb - $\pm 0.2\%$ FS 50 lb to 400,000 lb - $\pm 0.1\%$ FS
HYSTERESIS:	5 lb to 25 lb - $\pm 0.1\%$ FS 50 lb to 400,000 lb - $\pm 0.08\%$ FS
REPEATABILITY:	5 lb to 25 lb - $\pm 0.1\%$ 50 lb to 400,000 lb - $\pm 0.03\%$
MATERIAL:	5 lb to 200,000 - lb - Stainless Steel 300,000 lb to 400,000 lb - 17-4 PH
TEMPERATURE RANGE:	60° to 160° F
OUTPUT:	5 lb to 25 lb - 2mv/v 50 lb to 400,000 lb - 3mv/v
BRIDGE RESISTANCE:	350 ohm
EXCITATION:	10 Vdc
SAFE OVERLOAD:	50% Over Capacity
DEFLECTION:	.003" F.S.
CONNECTOR:	5 lb to 5000 lb - PTO6A-10-6S 7500 lb to 400,000 lb - MS3106A-14S-6S, Not Included



## AVAILABLE RANGES

	D1" Dia	D2" Dia	H" H"	F Typ.	G Dia B.C.	A"	B"	C"
5; 10; 25 lb*	2.50	.37	.98	#8	2.000	.82	.75	1.25
50; 100; 250; 500; 1000 lb	3.00	.56	1.18	1/4	2.250	.82	.75	1.25
2000; 3000; 4000; 5000 lb	3.50	.69	1.18	5/16	2.625	.82	.75	1.25
7500; 10,000; 15,000; 20,000; 30,000 lb	4.50	1.50	2.00	3/8	3.790	1.25	1.50	2.00
50,000; 75,000; 100,000 lb	4.50	1.50	2.00	3/8	3.790	1.25	1.50	2.00
150,000; 200,000 lb	5.50	2.00	2.18	3/8	4.812	1.25	1.50	2.00
300,000 lb	7.00	2.50	2.68	3/8	6.000	1.25	1.50	2.00
400,000; 500,000 lb	7.50	2.50	2.68	3/8	6.750	1.25	1.50	2.00
500,000 lb	11.00	4.75	4.50	3/4	9.500	1.25	1.50	2.00

\* All ranges below 1000 lbs and 3" diameter are LPG 310 w/6 mounting holes and compression only has load button welded.



## ALLOWABLE EXTRANEIOUS FORCE WITHOUT DAMAGE

	Side Load (Lbs)	Bending (lb/in)	Torque (lb/in)	Total Extran. Forces
25; 50; 100; 250; 500 lb	50%	40%	25%	100%
1000; 2000; 3000; 4000; 5000 lb	30%	25%	25%	100%
10,000; 15,000; 20,000; 30,000; 50,000 lb	20%	20%	15%	100%
100,000; 150,000; 200,000 lb	20%	20%	10%	100%