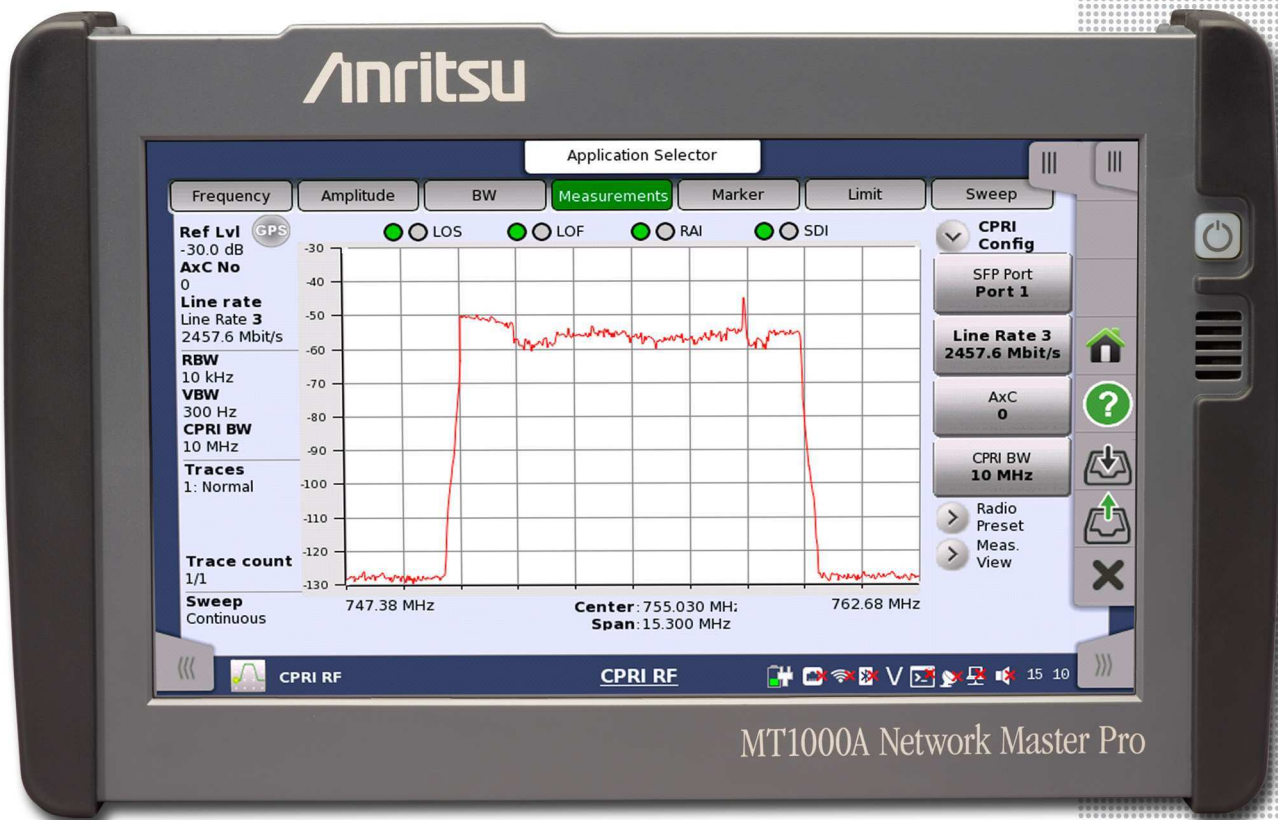


Anritsu envision : ensure

Network Master™ Series

Network Master Pro MT1000A

CPRI RF Module MU100040B



MT1000A Network Master Pro

Introduction

The MT1000A Network Master Pro is a handheld, battery-powered tester designed to facilitate the installation and maintenance of cellular networks. CPRI RF measurements are configured and displayed on the 9-inch color touch screen. The MU100040B CPRI RF module for the MT1000A Network Master Pro adds CPRI RF measurements to Anritsu's transport and fiber test platform. The modular design of the MT1000A means that it can be configured just for CPRI measurements or combined with the 10G/100G transport module and OTDR module to create the most comprehensive and versatile fiber and transport tester available.

Key Benefits and Features

- Displays LTE spectrum of ALU/Nokia, Ericsson and Huawei CPRI radios
- Fast update rate to capture intermittent interferers
- Spectrum pan and zoom for detailed analysis of interferers
- Spectrogram display captures and holds data for intermittent interferers
- Two SFP slots for simultaneous uplink and downlink testing
- SFP data reading and display
- Layer 2 alarm monitoring and display
- Auto configuration of CPRI parameters
- Base Band Unit Emulation ALu-Nokia LTE (Option 10)
- GPS data reading and display (used with Option 10)
- Modular design for use with MT1000A OTDR and 10G/100G transport test modules
- Battery powered for field use

Table of Contents

Connector Panel and Interface Overview4

Network Master Pro MT1000A Mainframe5

 User Interfaces.....5

 Service Interfaces5

 Other Interfaces.....5

 Miscellaneous.....5

 Environmental5

 Compliance and Safety.....5

CPRI LTE RF Measurements (Option 1).....6

 Measurements.....6

 Setup Parameters6

 Sweep Functions6

 Trace Functions6

 Marker Functions.....6

 Limit Line Functions6

 Bandwidth.....6

 CPRI Parameters6

 CPRI Interfaces.....6

CPRI Base Band Unit Emulation ALu-Nokia LTE (Option 10).....7

 Measurements.....7

 RF Measurements7

 RF Transmission.....7

 GPS Receiver.....7

Ordering Information.....8

 Mainframe8

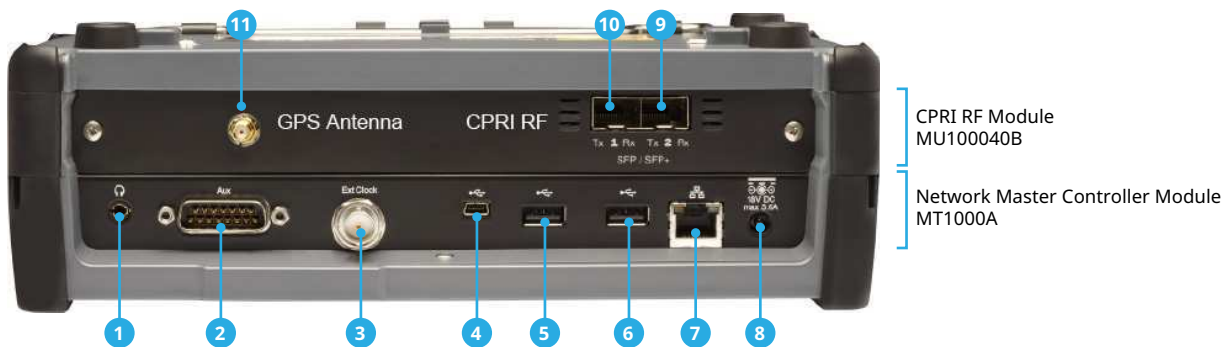
 CPRI RF Module8

 Miscellaneous Accessories.....8

 Maintenance Service.....9

All specifications and features subject to change without notice. For the most current data sheet, please visit the Anritsu web site: www.anritsu.com

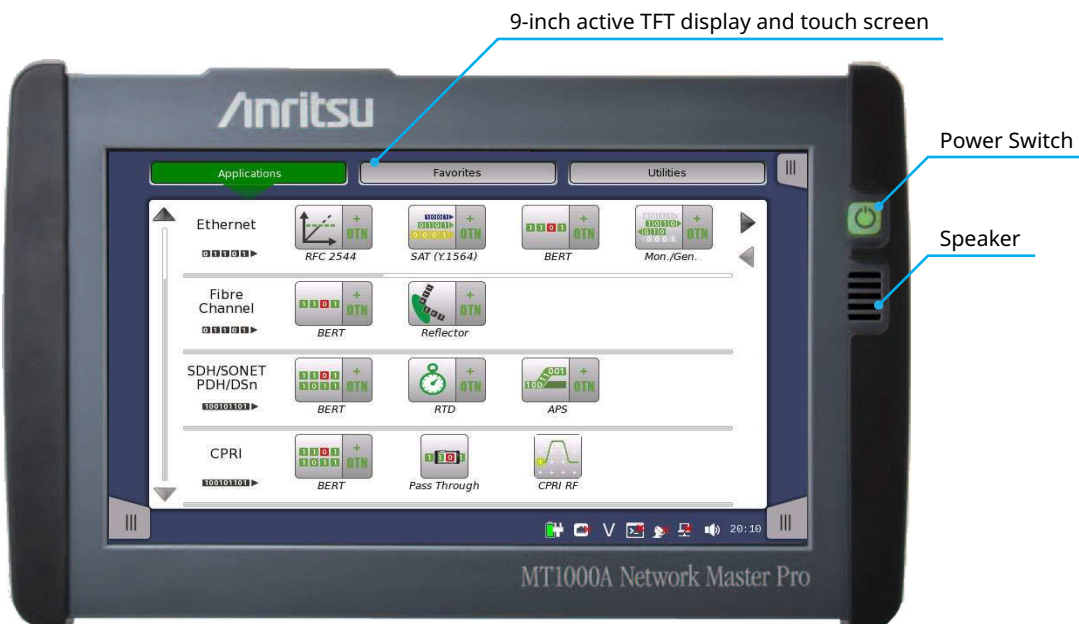
Connector Panel and Interface Overview



CPRI RF Module
MU100040B

Network Master Controller Module
MT1000A

- 1. Audio (3.5Ø: CTIA Standard)
- 2. AUX (G0325A/with MT1000A-005, MU100090A)
- 3. Clock Input
- 4. USB Mini-B
- 5. USB A
- 6. USB A
- 7. Ethernet Service Interface
- 8. DC Input (18 VDC)
- 9. CPRI SFP Port 2
- 10. CPRI SFP Port 1
- 11. SMA (f), GPS connection for use with MU100040B-010 only



9-inch active TFT display and touch screen

Power Switch

Speaker

Network Master Pro MT1000A Mainframe

User Interfaces		
Display	9-inch active TFT display (800 × 480 pixels) and touch screen	
Supported Languages	English	
Service Interfaces		
USB Data Interface	MT1000A operates as host: USB 2.0 type A (2 ports) MT1000A operates as device: USB 2.0 type Mini-B (1 port)	
Ethernet Interface	Ethernet 10M/100M/1000M, Connector: RJ45	
WLAN Interface ¹	IEEE 802.11 b/g/n	
Bluetooth Interface ¹	Bluetooth 2.1 +EDR	
Other Interfaces		
Audio Interface	For connection of CTIA Standard head set Connector: 3.5 mm diameter jack	
AUX Connector	For connection of optional G0325A GPS receiver With MT1000A-005: For connection of optional MU100090A	
Built-in Loudspeaker	Monitors voice channel Output level: user-controlled from user interface	
Ext. Clock Input	For connection of external clock signals: SETS (E1: 2.048 Mbps), BITS (DS1: 1.544 Mbps) or 2.048 MHz TTL signal in accordance with ITU-T G.703, 10 MHz Connector: BNC	
Miscellaneous		
Battery	10.8 V rechargeable and replaceable intelligent Li-ion battery Operating time: 4 hours (typical) Charging time: 3 to 6 hours (typical) Remaining capacity indication: %	
Mains Adapter	Input: 100 VAC to 240 VAC, 50 Hz/60 Hz Output: 18 VDC, 3.62 A (max) Power Consumption: ≤ 65 W With MT1000A-006 ² Input: 100 VAC to 240 VAC, 50 Hz/60 Hz Output: 18 VDC, 6.6 A (max) Power Consumption: ≤ 120 W	
Dimensions and Mass	255 (W) × 164 (H) × 80 (D) mm ≤2.6 kg (including MT1000A, MU100040B and battery)	
Environmental		
Temperature	Operating: 0 °C to +45 °C (non-condensing) with MU100040B Charging: 0 °C to +40 °C (non-condensing) Storage: -30 °C to +60 °C (non-condensing, without battery or AC adapter) -20 °C to +50 °C (non-condensing, with battery and AC adapter)	
Humidity	Operating: ≤ 85 % RH (non-condensing) Storage and Transportation: ≤ 90 % RH (non-condensing)	
Compliance and Safety		
EMC	EN61326-1, EN61000-3-2	
LVD	EN61010-1	
Laser Safety ³	IEC 60825-1: 2007 CLASS 1, 21CFR1040.10, and 1040.11 ⁴ (MU100040B with optical modules)	

1. Available for certified countries and regions including USA, Canada, Japan and all EU countries. Please visit www.anritsu.com for updated information.
 2. Required for MU100011A (100G Multirate Module).
 3. Safety measures for laser products. This product complies with optical safety standards in 21CFR1040.10, 1040.11, and IEC 60825-1. The descriptive labels are affixed to the product.
 4. Excludes deviations caused by conformance to Laser Notice No. 50 dated June 24, 2007.



CPRI LTE RF Measurements (Option 1)

Measurements	(CPRI RF measurements support LTE technology)
Spectrum	LTE Uplink and Downlink
Spectrogram	LTE Uplink and Downlink
Layer 2 Alarms	Signal Loss, LOS, LOF, LSS, Remote LOS, Remote LOF, RAI, SDI, Reset
SFP Data	Reads device information
Optical Power	Reads Tx/Rx Optical Power from SFP

Setup Parameters

Frequency	Center, Span
Amplitude	Reference Level (RL), Scale
Bandwidth	RBW, Auto RBW, VBW, Auto VBW, VBW/Average Type, RBW/VBW, Span/RBW
Measurements	CPRI Spectrum, Spectrogram, Layer 2 Alarms, SFP Data (SFP Info/Compliance Info)
CPRI Configure	Line Rate, AxC Container #, CPRI BW, Radio Presets
Radio Presets	Ericsson (Uplink/Downlink), Alcatel (Uplink/Downlink) Huawei (Uplink/Downlink), Advanced
Advanced	IQ Bit Width, Number of Reserve Bits, Aggregation (On/Off)

Sweep Functions

Sweep	Single/Continuous
-------	-------------------

Trace Functions

Traces	Up to three Traces (1, 2, 3), Blank, Hold/View, Active
Trace 1 Operations	Normal, Max Hold, Min Hold, Average (2 to 512 averages)
Trace 2 Operations	Max Hold, Min Hold
Trace 3 Operations	Max Hold, Min Hold

Marker Functions

Markers	Markers 1 to 6, Marker Table (On/Off), All Markers Off
Marker Auto-Position	Peak Search, Next Peak (Right/Left), Marker Frequency to Center, Fine Tune Marker Control (Right/Left)
Marker Table	1 to 6 markers frequency and amplitude

Limit Line Functions

Limit Lines	Upper/Limit, On/Off, Move, Limit Alarm
Limit Line Move	By dB

Bandwidth

Resolution Bandwidth (RBW)	10 Hz to 3 MHz in 1-3-10 sequence ±10 % (-3 dB bandwidth point) typical
Video Bandwidth (VBW)	10 Hz to 3 MHz in 1-3-10 sequence ±10 % (-3 dB bandwidth) typical
Line Bit Rate	Line bit rate 1: 614.4 Mbit/s Line bit rate 2: 1228.8 Mbit/s Line bit rate 3: 2457.6 Mbit/s Line bit rate 4: 3072.0 Mbit/s Line bit rate 5: 4915.2 Mbit/s Line bit rate 6: 6144.0 Mbit/s Line bit rate 7: 9830.4 Mbit/s

CPRI Parameters

IQ Sample Width	10 bits, 12 bits, 15 bits, 16 bits
Bandwidth	5 MHz, 10 MHz, 15 MHz, 20 MHz
Aggregation	On/Off

CPRI Interfaces Two SFP (small form factor pluggable) optical transceiver ports.

SFP 4.25G	850 nm
SFP+ 8G-FC/10G-SR	850 nm
SFP 2.7G	1310 nm
SFP+ 10G-LR	1310 nm
SFP 3.07Gbps	1310 nm
SFP 3.7Gbps	850 nm
SFP+ 10.5Gbps	1310 nm
SFP+ 10.5Gbps	850 nm

CPRI Base Band Unit Emulation ALu-Nokia LTE (Option 10)

Measurements

BBU Test	Initialization; RRH information Manufacturer Model Number Serial Number Frequency Range Output Power Firmware SFP Location
SFP Data	Reads SFP information installed in RRH
CPRI Alarms	LOS, LOF, RAI, SDI status lights

RF Measurements

RRH Antenna VSWR/Return Loss	While RRH is transmitting; Pass/Fail Limit
Uplink Spectrum	While RRH is transmitting; Uplink Markers Limit Lines Max., Min. Traces RBW/VBW Pan & Zoom
Uplink Spectrogram	While RRH is transmitting; Uplink Markers Limit Lines Max., Min. Traces RBW/VBW Pan & Zoom

RF Transmission

Test Models	LTE test model waveforms Test models: E-Tm1.1, E-Tm1.2, E-Tm2, E-Tm3.1, E-Tm3.2, E-Tm3.3 Bandwidths: 5 MHz, 10 MHz, 15 MHz, 20 MHz
Single Carrier Over CPRI	Adjust transmit power and center frequency of RRH
Waveform Manager	Manages waveforms for transmission

GPS Receiver

GPS data	Number of Tracked Satellites, Latitude, Longitude, Altitude, Fix available Yes/No, Almanac, Antenna and Receiver Status, Antenna Voltage, Current
GPS Lock Accuracy	$\pm 5.0 \times 10^{-8}$, 3 minutes after satellite lock, 0 °C to 50 °C ambient temperature
Connector	SMA, female
Supplied Antenna	2000-1760-R GPS Antenna, SMA (m), 25 dB gain, 2.5 VDC to 3.7 VDC

Ordering Information Please specify the model/part number, description, and quantity when ordering.

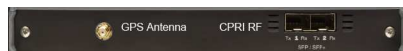
Mainframe



Part Number	Description
MT1000A	Network Master Pro
Standard Accessories	
MT1000A-006 ^a	High Power Supply
B0690A	Soft Case
B0728A	Rear Panel and Screw Kit
G0310A	Li-ion Battery
G0385A	High Power AC Adapter
J1565A ^b	Line Cord USA
J1594A ^b	Line Cord Japan
J1566A ^b	Line Cord Europe
J1567A ^b	Line Cord UK
J1568A ^b	Line Cord Australia
J1596A ^b	Line Cord Korea
Z1746A	Stylus
Z1747A ^c	Shoulder Strap
Z1748A ^d	Handgrip
Options	
MT1000A-003 ^e	Connectivity for WLAN/Bluetooth
MT1000A-005 ^f	AUX I/O

- a. Required for MU100011A (100G Multirate Module).
- b. One of the power line cords is supplied with the MT1000A.
- c. This strap is mounted on the MT1000A.
- d. This handgrip is mounted on the MT1000A.
- e. Available for certified countries and regions including USA, Canada, Japan and all EU countries. Please visit the Anritsu web site for updated information.
- f. Required to carry MU100090A. Contact Anritsu to retrofit your instrument.

CPRI RF Module



Part Number	Description
MU100040B	CPRI RF Module (requires Option 1)
Options	
MU100040B-001	Option 1, CPRI LTE RF Measurements
MU100040B-010	Option 10, CPRI Base Band Unit Emulation ALu-Nokia LTE
Accessories (included with Option 10)	
2000-1760-R	GPS Antenna, SMA (m), 25 dB gain, 2.5 VDC to 3.7 VDC
Optional CPRI Accessories	
67-12-R	80/20 Optical Tap; Single Mode/Multi Mode
67-13-R	80/20 Optical Tap; Single Mode
67-14-R	50/50 Optical Tap; Single Mode/Multi Mode
67-15-R	50/50 Optical Tap; Single Mode
68-5-R	SFP (Optical Module), 4.25G, 850 nm, 500 m
68-6-R	SFP+ (Optical Module), 8G FC/10G SR 850 nm
68-7-R	SFP (Optical Module), 2.7G, 1310 nm, 15 km
68-8-R	SFP+ (Optical Module), 10G LR, 1310 nm
68-9-R	SFP (Optical Module), 3.07Gbps SFP, 1310 nm
68-10-R	SFP (Optical Module), 3.7Gbps SFP, 850 nm
68-11-R	SFP (Optical Module), 10.5Gbps SFP+, 1310 nm
68-12-R	SFP (Optical Module), 10.5Gbps SFP+, 850 nm
68-16-R	SFP (Optical Module), 9.83Gbps SFP+, 1310 nm
2100-29-R	Fiber Optic Cable, 3 m, LC/UPC, Single Mode (SM), Simplex
2100-30-R	Fiber Optic Cable, 10 m, LC-SC, Multi Mode (MM), Simplex
2100-31-R	Fiber Optic Cable, 3 m, LC/UPC, Single Mode (SM), Duplex
971-14-R	Ferrule Cleaner, 2.5 mm SC
971-15-R	Ferrule Cleaner, 1.25 mm LC
971-16-R	Fiber Ferrule Cleaner
808-16-R	3m, DUPLEX, MM, LC-LC
808-17-R	3m, SIMPLEX, MM, LC-LC
2000-1849-R	ESD Box

Miscellaneous Accessories

Part Number	Description
760-286-R	Compact Transit Case with Wheels and Handle 55.6 cm x 35.5 cm x 22.9 cm (22" x 14" x 9")
G0309A	AC Adapter
G0324A	Battery Charger
J1569B	Car 12 VDC Adapter
J1667A ^a	GPIO-USB Converter
Operation Manuals	
10580-00443	MT1000A/MU100040B Network Master Pro Operation Manual

- a. J1667A is required for SCPI remote control via GPIO.

Ordering Information (Continued)

Maintenance Service

Part Number	Description
MT1000A-ES210	2 Years Extended Warranty Service
MT1000A-ES310	3 Years Extended Warranty Service
MT1000A-ES510	5 Years Extended Warranty Service
MU100040B-ES210	2 Years Extended Warranty Service
MU100040B-ES310	3 Years Extended Warranty Service
MU100040B-ES510	5 Years Extended Warranty Service

Training at Anritsu

Anritsu has designed courses to help you stay up to date with technologies important to your job. For available training courses, visit: www.anritsu.com/training



• United States

Anritsu Company

1155 East Collins Blvd, Suite 100
Richardson, TX 75081, U.S.A.
Toll Free: 1-800-267-4878
Phone: +1-972-644-1777
Fax: +1-972-671-1877

• Canada

Anritsu Electronics Ltd.

700 Silver Seven Road, Suite 120
Kanata, Ontario K2V 1C3, Canada
Phone: +1-613-591-2003
Fax: +1-613-591-1006

• Brazil

Anritsu Eletrônica Ltda.

Praça Amadeu Amaral, 27 - 1 Andar
01327-010 Bela Vista, São Paulo, SP, Brazil
Phone: +55-11-3283-2511
Fax: +55-11-3288-6940

• Mexico

Anritsu Company, S.A. de C.V.

Av. Ejército Nacional No. 579 Piso 9, Col. Granada
11520 México, D.F., México
Phone: +52-55-1101-2370
Fax: +52-55-5254-3147

• United Kingdom

Anritsu EMEA Ltd.

200 Capability Green
Luton, Bedfordshire LU1 3LU
United Kingdom
Phone: +44-1582-433280
Fax: +44-1582-731303

• France

Anritsu S.A.

12 Avenue du Québec
Bâtiment Iris 1-Silic 612
91140 Villebon-sur-Yvette, France
Phone: +33-1-60-92-15-50
Fax: +33-1-64-46-10-65

• Germany

Anritsu GmbH

Nemetschek Haus, Konrad-Zuse-Platz 1
81829 München, Germany
Phone: +49-89-442308-0
Fax: +49-89-442308-55

• Italy

Anritsu S.r.l.

Via Elio Vittorini 129
00144 Roma, Italy
Phone: +39-06-509-9711
Fax: +39-06-502-2425

• Sweden

Anritsu AB

Kistagången 20B
164 40 KISTA, Sweden
Phone: +46-8-534-707-00
Fax: +46-8-534-707-30

• Finland

Anritsu AB

Teknobulevardi 3-5
FI-01530 Vantaa, Finland
Phone: +358-20-741-8100
Fax: +358-20-741-8111

• Denmark

Anritsu A/S

Kay Fiskers Plads 9
2300 Copenhagen S, Denmark
Phone: +45-7211-2200
Fax: +45-7211-2210

• Russia

Anritsu EMEA Ltd.

Representation Office in Russia

Tverskaya str. 16/2, bld. 1, 7th floor
Moscow, 125009, Russia
Phone: +7-495-363-1694
Fax: +7-495-935-8962

• Spain

Anritsu EMEA Ltd.

Representation Office in Spain

Edificio Cuzco IV, Po. de la Castellana, 141, Pta. 8
28046, Madrid, Spain
Phone: +34-915-726-761
Fax: +34-915-726-621

• United Arab Emirates

Anritsu EMEA Ltd.

Dubai Liaison Office

902, Aurora Tower,
P O Box: 500311- Dubai Internet City
Dubai, United Arab Emirates
Phone: +971-4-3758479
Fax: +971-4-4249036

• India

Anritsu India Private Limited

2nd & 3rd Floor, #837/1, Binnamangla 1st Stage
Indiranagar, 100ft Road, Bangalore - 560038, India
Phone: +91-80-4058-1300
Fax: +91-80-4058-1301

• Singapore

Anritsu Pte. Ltd.

11 Chang Charn Road, #04-01, Shriro House
Singapore 159640
Phone: +65-6282-2400
Fax: +65-6282-2533

• P.R. China (Shanghai)

Anritsu (China) Co., Ltd.

27th Floor, Tower A
New Caohejing International Business Center
No. 391 Gui Ping Road Shanghai, Xu Hui Di District
Shanghai 200233, P.R. China
Phone: +86-21-6237-0898
Fax: +86-21-6237-0899

• P.R. China (Hong Kong)

Anritsu Company Ltd.

Unit 1006-7, 10/F., Greenfield Tower
Concordia Plaza
No. 1 Science Museum Road, Tsim Sha Tsui East
Kowloon, Hong Kong, P. R. China
Phone: +852-2301-4980
Fax: +852-2301-3545

• Japan

Anritsu Corporation

8-5, Tamura-cho, Atsugi-shi
Kanagawa, 243-0016 Japan
Phone: +81-46-296-1221
Fax: +81-46-296-1238

• Korea

Anritsu Corporation, Ltd.

5FL, 235 Pangyoyeok-ro, Bundang-gu, Seongnam-si
Gyeonggi-do, 13494 Korea
Phone: +82-31-696-7750
Fax: +82-31-696-7751

• Australia

Anritsu Pty. Ltd.

Unit 20, 21-35 Ricketts Road,
Mount Waverley, Victoria 3149, Australia
Phone: +61-3-9558-8177
Fax: +61-3-9558-8255

• Taiwan

Anritsu Company Inc.

7F, No. 316, Sec. 1, Neihu Rd, Taipei 114, Taiwan
Phone: +886-2-8751-1816
Fax: +886-2-8751-1817

List Revision Date: 20160317

Data subject to change without notice.
For the most recent specifications, visit: www.anritsu.com.

MT1000A/MU100040B TDS, PN: 11410-00944, Rev. C
Copyright May 2020, Anritsu Company, USA. All Rights Reserved.

© Anritsu All trademarks are registered trademarks of their respective companies.
Anritsu utilizes recycled paper and environmentally conscious inks and toner.