



Agilent 16850 Series Portable Logic Analyzers

Installation/Quick Start Guide

REPRODUCTION AND DISTRIBUTION OF THIS TECHNICAL
MANUAL IS AUTHORIZED FOR GOVERNMENT PURPOSES.



Agilent Technologies

Notices

© Agilent Technologies, Inc. 2013

No part of this manual may be reproduced in any form or by any means (including electronic storage and retrieval or translation into a foreign language) without prior agreement and written consent from Agilent Technologies, Inc. as governed by United States and international copyright laws.

Manual Part Number

16850-97001

Edition

First Edition, August 2013

Printed in Malaysia

Agilent Technologies, Inc.
1900 Garden of the Gods Road
Colorado Springs, CO 80907 USA

Warranty

The material contained in this document is provided “as is,” and is subject to being changed, without notice, in future editions. Further, to the maximum extent permitted by applicable law, Agilent disclaims all warranties, either express or implied, with regard to this manual and any information contained herein, including but not limited to the implied warranties of merchantability and fitness for a particular purpose. Agilent shall not be liable for errors or for incidental or consequential damages in connection with the furnishing, use, or performance of this document or of any information contained herein. Should Agilent and the user have a separate written agreement with warranty terms covering the material in this document that conflict with these terms, the warranty terms in the separate agreement shall control.

Technology Licenses

The hardware and/or software described in this document are furnished under a license and may be used or copied only in accordance with the terms of such license.

Restricted Rights Legend

U.S. Government Restricted Rights. Software and technical data rights granted to the federal government include only those rights customarily provided to end user customers. Agilent provides this customary commercial license in Software and technical data pursuant to FAR 12.211 (Technical Data) and 12.212 (Computer Software) and, for the Department of Defense, DFARS 252.227-7015 (Technical Data - Commercial Items) and DFARS 227.7202-3 (Rights in Commercial Computer Software or Computer Software Documentation).

Safety Notices

CAUTION

A **CAUTION** notice denotes a hazard. It calls attention to an operating procedure, practice, or the like that, if not correctly performed or adhered to, could result in damage to the product or loss of important data. Do not proceed beyond a **CAUTION** notice until the indicated conditions are fully understood and met.

WARNING

A **WARNING** notice denotes a hazard. It calls attention to an operating procedure, practice, or the like that, if not correctly performed or adhered to, could result in personal injury or death. Do not proceed beyond a **WARNING** notice until the indicated conditions are fully understood and met.

16850 Series Logic Analyzers—At a Glance

The Agilent Technologies 16850 series logic analyzers are portable logic analyzers that range from 34 to 136 logic acquisition channels, depending on the model.

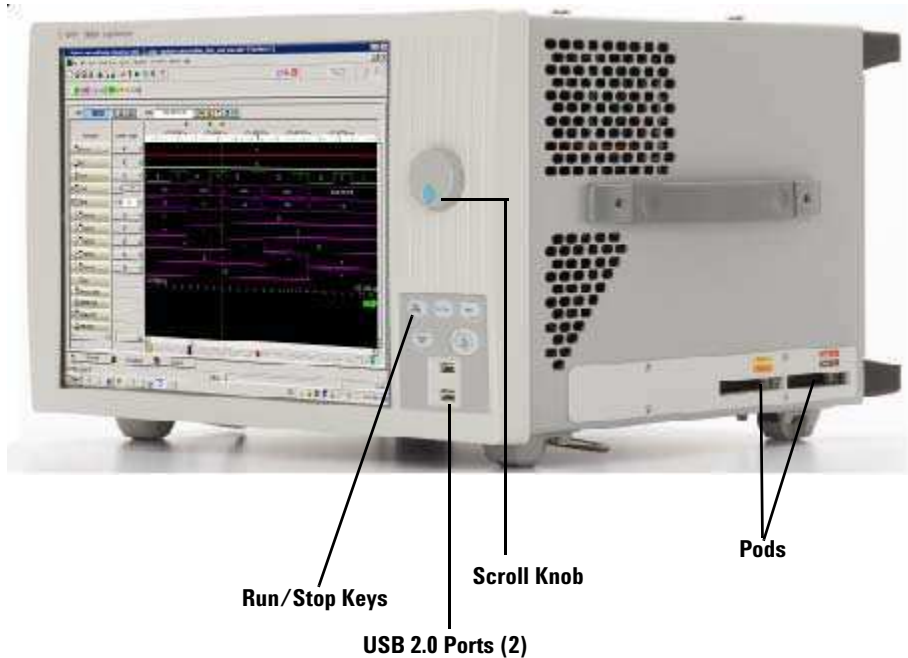


Table 1 Model comparisons

Agilent model number	16851A	16852A	16853A	16854A
Logic acquisition channels	34	68	102	136

Features, Logic Acquisition

- 2 M to 128 M samples of memory depth per channel (depending on memory option), software upgradeable.
- 350 MHz or 700 MHz maximum state data rate (depending on state speed option), software upgradeable.

- Full Channel Timing Mode at 2.5 GHz sampling with 12.5 GHz Timing Zoom.
- Half Channel Timing Mode at 5.0 GHz sampling with 12.5 GHz Timing Zoom
- *Eye scan* (automatic threshold and sample position setup) feature.
- Single-ended and differential probing support

Features, Mainframe

- Built-in 15 inch color touch screen with 1024 x 768 resolution
- Removable hard drive
- 10/100 Base-T LAN port
- USB 2.0 ports (six total, two on front, four on back)
- One PCI expansion slot
- One PCI Express x1 expansion slot
- Windows 7 installation
- *Agilent Logic and Protocol Analyzer* application which takes the complexity out of making logic analyzer measurements. You can perform all operations directly from one window.

Supplied Accessories

- PS/2 mouse
- PS/2 keyboard
- Accessory pouch and power cord

Snap the accessories pouch to the top of the 16850 Series logic analyzer. Use it to store probe leads, accessories, or manuals. Use the tie-down straps under the flap to conveniently hold pod cables not in use or during transport.

Optional Accessories

- Probes

Front Panel

Refer to the online help in the logic and protocol analyzer software for information on using the analyzer.

Rear Panel

Before you turn on the system, connect your mouse and keyboard to the 16850 Series logic analyzer rear panel.

In This Guide...

This guide describes how to set up, use, and update your 16850 series logic analyzer. It also contains information on solving problems and additional safety information.

1 First-Time Set Up

This chapter describes the steps in setting up the logic analyzer for the first time.

2 Getting Started with the Logic Analyzer

This chapter describes some basic features of the logic analyzer and tells you where to find more information on using the logic analyzer.

3 Updating the Logic Analyzer

This chapter describes how to change your logic analyzer's network and Windows Firewall settings. It also describes how to get and install software updates.

4 Solving Problems

This chapter describes the logic analyzer's built-in self tests and recovering system software.

5 Safety Notices

This chapter contains additional safety information.

Contents

1	First-Time Set Up	11
	Proper Cooling	12
	First-Time Set Up Considerations	13
	Determine Whether the Instrument will be Connected to the Network	13
	Get Network Setup Information	13
	First-Time Set Up On 16850 Series Logic Analyzers	15
	Additional First-Time Setup Steps	17
	Establishing an Administrator Account (recommended for standalone and networked instruments)	17
	Protecting the Instrument's Operating System	17
2	Getting Started with the Logic Analyzer	19
	Probing	20
	Making a Measurement	21
	Snap to Edge Markers	23
	Left-Click Menus	24
	Tree Structure Bus/Signal Names	24
	Offline Analysis	25
	Marker Overview	25
	Tool Tips	26
	Trigger History	27
	To power off the system	28
	Using the Windows Shutdown	28

Contents

	Using a Short Press of the Power Button	28
	Using a Long Press of the Power Button	29
	Unplugging the Power Cord or Power Loss	29
	Specifications and Characteristics	30
3	Updating the Logic Analyzer	33
	Changing Network Settings	34
	Changing Windows Firewall Settings	35
	To give other applications/ports access through the firewall	35
	To restore the logic analyzer firewall defaults	36
	Software Installation and Upgrades	37
	Agilent Logic and Protocol Analyzer Software	37
	Optional Products	37
4	Solving Problems	39
	Running Self-Tests	40
	If the logic analyzer powers itself down	42
	If the Power LEDs do not come on	42
	If you get a registry error and the system won't boot	42
	If there are network connection problems	43
	If there are touch screen problems	44
	Using the System Recovery Software	47
	Contacting Agilent Service/Support	51
5	Safety Notices	53
	Warnings	54
	To clean the instrument	56
	Safety Symbols	57

Index 59

Contents



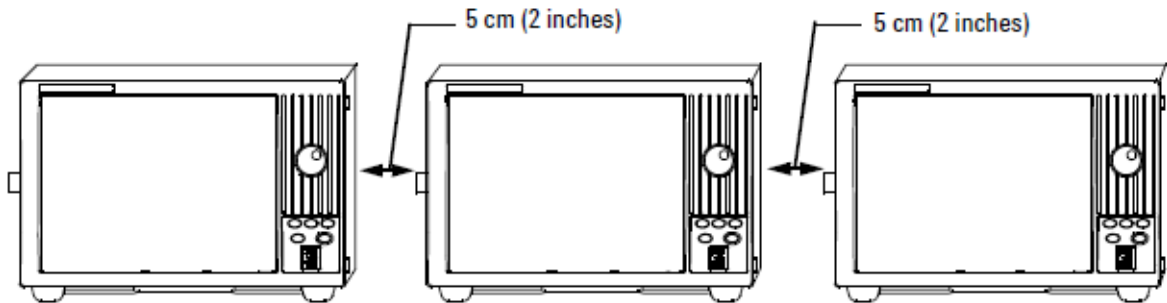
1 First-Time Set Up

Proper Cooling 12
First-Time Set Up Considerations 13
First-Time Set Up On 16850 Series Logic Analyzers 15
Additional First-Time Setup Steps 17



Proper Cooling

Allow at least 5 cm (2 inches) of space between instruments for proper cooling.



First-Time Set Up Considerations

Determine Whether the Instrument will be Connected to the Network

NOTE

If you plan to use COM automation to programmatically control a logic analyzer from a remote computer, be aware that the remote computer and the logic analyzer must both have the same kind of network membership; that is, they must both be members of a "Workgroup", or they must both be members of a "Domain". This is due to the security requirements of Distributed COM.

Standalone

You are going to use the logic analyzer as a standalone instrument (no LAN connection). Printing requires a printer attached to the logic analyzer, sharing files is done via USB flash drive or floppy disk.

Connected to a Network

If you require the ability to print, share files, remotely control the logic analyzer, etc. over the network, you need to either join a workgroup or domain.

Get Network Setup Information

For networking, find out whether the network that your instrument will be connected to uses the Microsoft Workgroup model or Microsoft Domain model. In order for your instrument to perform tasks over the network (print, transfer files, etc.) your instrument must be configured appropriately for the networking model in use at your site.

Information you may require to complete your network configuration may include, but is not limited to:

- The Workgroup or Domain name.

1 First-Time Set Up

- Methodology for assigning IP addresses at your site (for example, DHCP).
- Domain Name Service (DNS).

Other network information that may be readily available from your network administrator.

First-Time Set Up On 16850 Series Logic Analyzers

The first time you turn on a 16850 series logic analyzer (shipped with Windows 7 installation), you are automatically logged on to the system using the Administrator account and the Windows 7 desktop is displayed.

Once you are logged on to the system, you must set the following logic analyzer configurations based on how you want to use your logic analyzer. You use the standard Windows 7 procedures to set these configurations.

Table 2 Logic Analyzer Configurations on a 16850 Series Logic Analyzer with Windows 7 Installation

Configuration Task	Standalone (No LAN)	Logic Analyzer Usage	Domain
		Workgroup	
Protect your instrument's PC	N/A	Turn on Automatic Updates	Turn on Automatic Updates
Specify computer name	If your organization has a standard naming scheme, use that scheme. Otherwise, choose a descriptive name (less than 15 characters)		
Specify the administrator password	Agilent recommends entering an administrator password for administrator accounts. See page 17 for actions that require administrator accounts.		
Specify the domain name (if applicable)	No (Is given WORKGROUP membership)	No (Is given WORKGROUP membership)	Yes Enter the domain name the logic analyzer will log onto.
Enter your domain settings.	N/A	N/A	Enter the name/password of the user who can add the logic analyzer to the domain.
Configure connectivity to the Internet	N/A	N/A	Choose the appropriate Internet connectivity.
Set up a high-speed connection	N/A	N/A	Enter either the fixed IP/DNS assigned by your network administrator or select "Obtain Automatically".

1 First-Time Set Up

Configuration Task	Standalone (No LAN)	Logic Analyzer Usage	Domain
		Workgroup	
Determine if you want to connect the instrument's PC to the Internet directly or through a network.	N/A	Agilent does not support connecting to the Internet through a modem directly connected to the logic analyzer.	N/A
Register with Microsoft	The 16850 series of Logic Analyzers have the Windows 7 operating system already enabled to run. This registration is to allow Microsoft to contact you.		
Specify users for the instrument's PC	You can add multiple users with administrator permissions to allow these users to use the logic analyzer.		

Additional First-Time Setup Steps

Establishing an Administrator Account (recommended for standalone and networked instruments)

Agilent recommends that you set up an Administrator account for your logic analyzer. You have to be logged in to the Administrator account to do the following:

- Install most software (applies whether the instrument is networked or standalone).
- Change the workgroup.
- Perform "Windows Updates".
- Change firewall settings.

Protecting the Instrument's Operating System

Microsoft recommends the following three steps to ensure the instrument's PC is protected.

- 1 Use an internet firewall.
- 2 Get operating system updates.
- 3 Use up-to-date antivirus software.

1 First-Time Set Up



2 Getting Started with the Logic Analyzer

Probing	20
Making a Measurement	21
Snap to Edge Markers	23
Left-Click Menus	24
Tree Structure Bus/Signal Names	24
Offline Analysis	25
Marker Overview	25
Tool Tips	26
Trigger History	27
Specifications and Characteristics	30



Probing

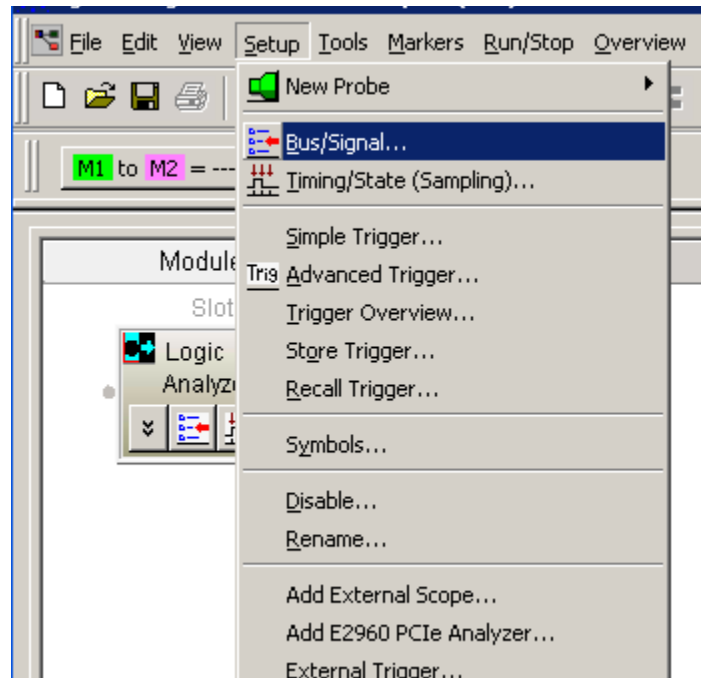
Probing is the key to effective and efficient use of logic analyzers. Agilent Technologies offers a wide variety of probing accessories that support general-purpose and application-specific measurement needs. We provide reliable, electrically and mechanically unobtrusive probes that make it easy to connect your Agilent logic analyzer to your system under test. For more information on Agilent probes:

- See the quick reference card that came with your logic analyzer for an overview of probing solutions.
- Go to www.agilent.com/find/logic_analyzer_probes for the most up-to-date information on probe compatibility with a given logic analyzer and purchasing information.
- Go to www.agilent.com and search for *Probing Solutions for Logic Analysis Systems* (publication 5968-4632E) for a catalog of detailed probing information.

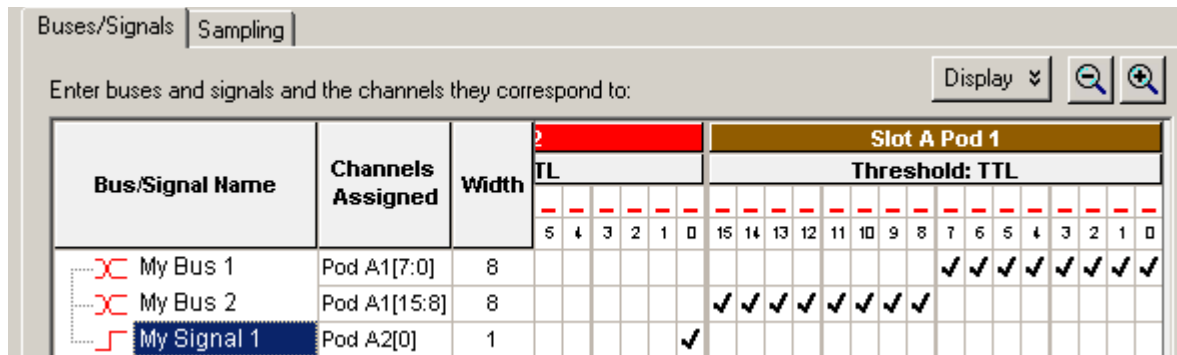
To connect and set up a probe, follow the instructions that came with the probe.

Making a Measurement

- 1 Start up the logic analyzer, connect to your target system, and select **Setup>Bus/Signal**.

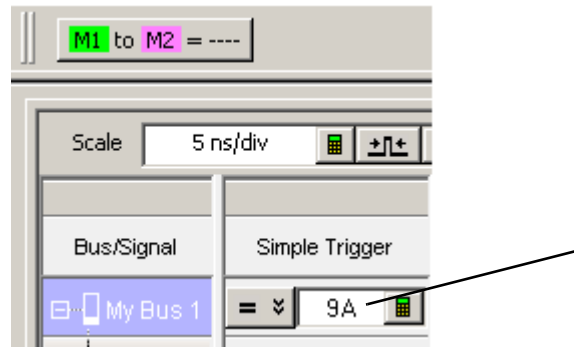


- 2 Assign buses and signals and click OK.

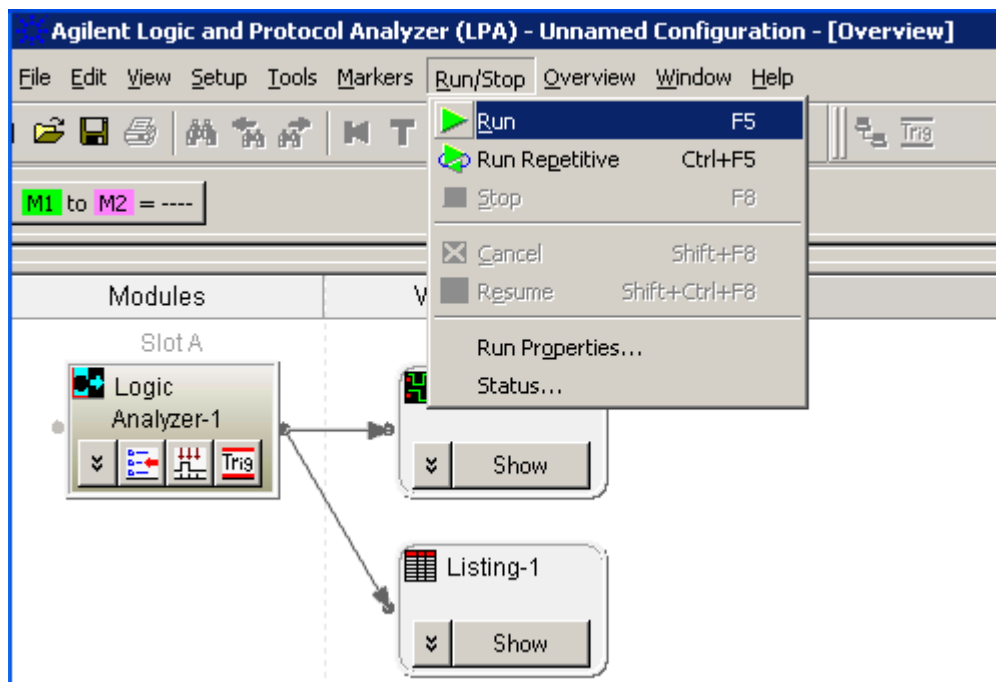


2 Getting Started with the Logic Analyzer

3 Enter a trigger value in the Waveform View.

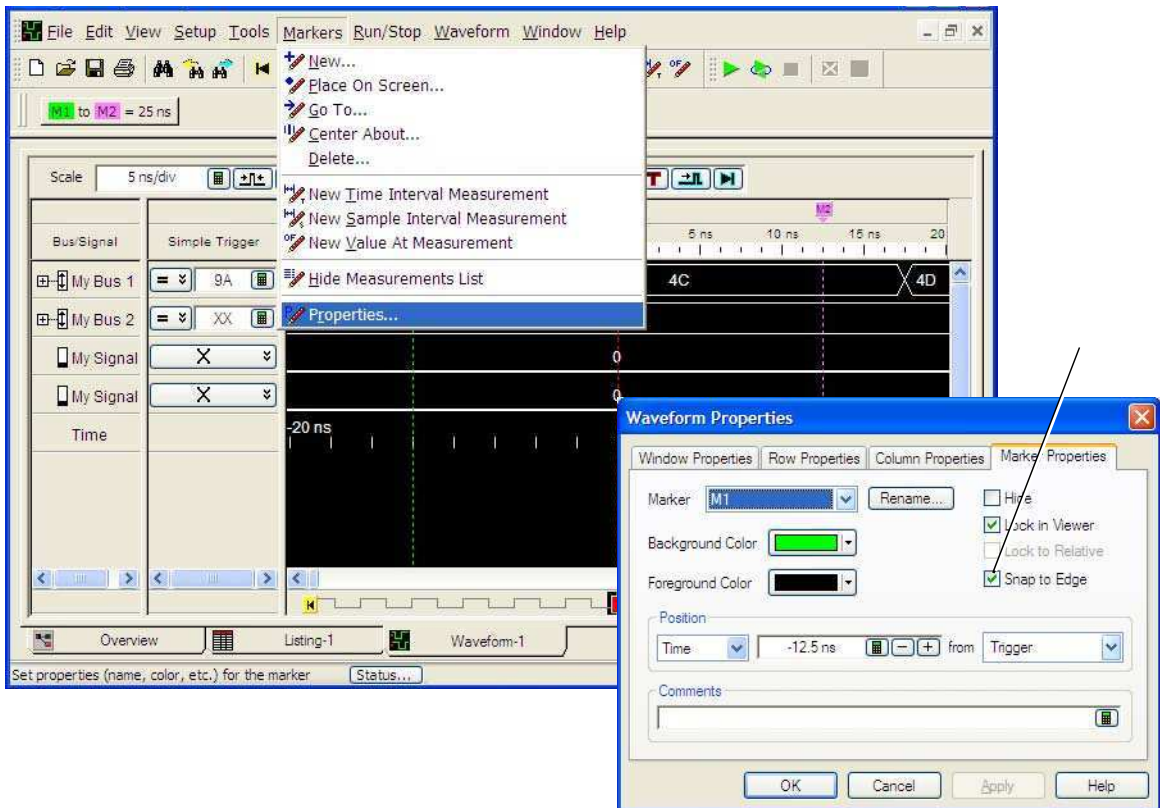


4 Acquire and view data.



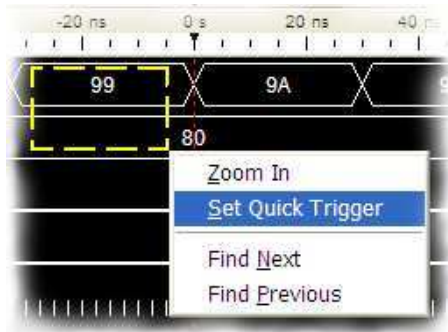
Snap to Edge Markers

You can set the markers to jump to the nearest edge of a waveform. A yellow target will show which edge the marker will jump to.



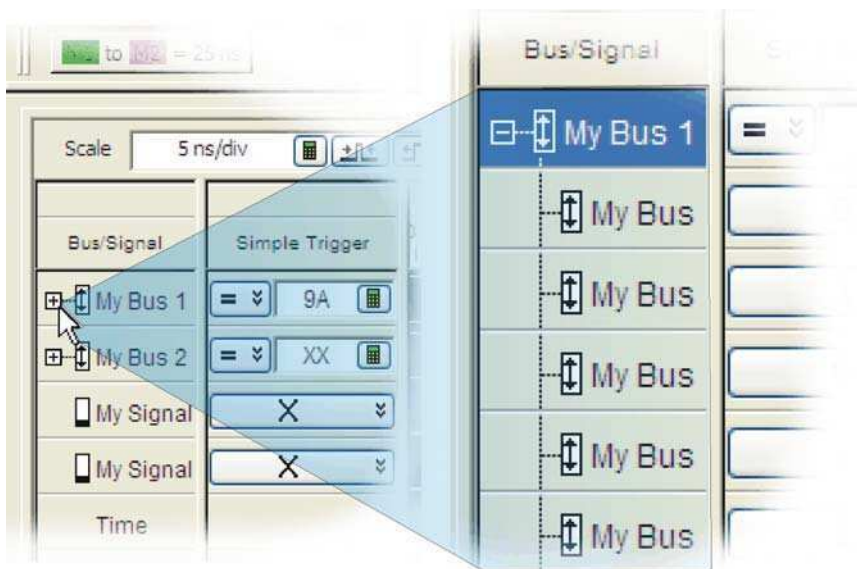
Left-Click Menus

Drag a box around parts of the data. When you release the mouse button, a menu appears.



Tree Structure Bus/Signal Names

Show individual signals in buses by clicking on the + to expand.



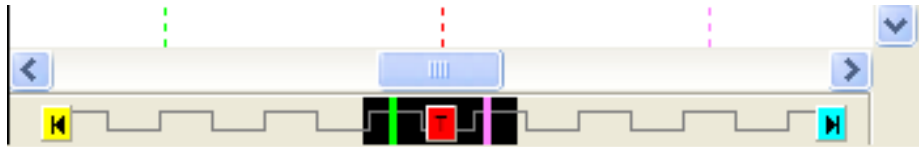
Offline Analysis

Install the *Agilent Logic and Protocol Analyzer* application on another Windows XP, Windows 7, or Windows 2000 computer and you can analyze data without the 16850 Series logic analyzer.

- 1 Follow the instructions in “[Software Installation and Upgrades](#)” on page 37 to load the 16850 Series logic analyzer software on your PC.
- 2 Acquire a trace with the logic analyzer.
- 3 Save a configuration file with data.
- 4 Copy the file to the PC being used for offline analysis.
- 5 From the *Agilent Logic and Protocol Analyzer* application software on your PC, open the configuration file.

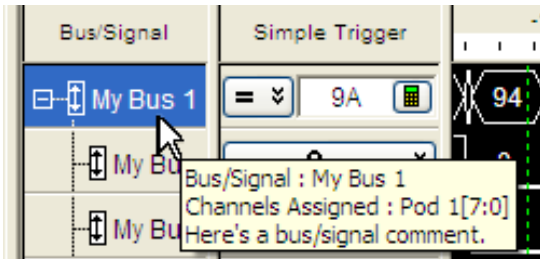
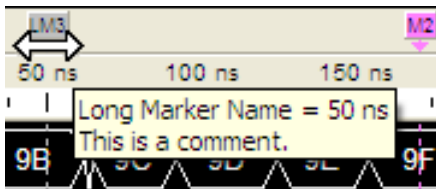
Marker Overview

The marker overview display shows marker locations within the data and the part of data currently being displayed.



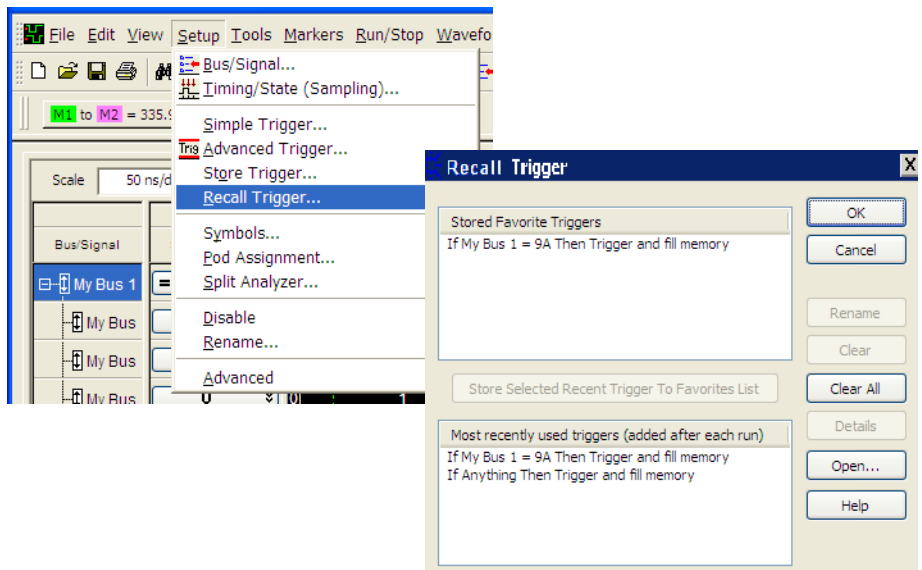
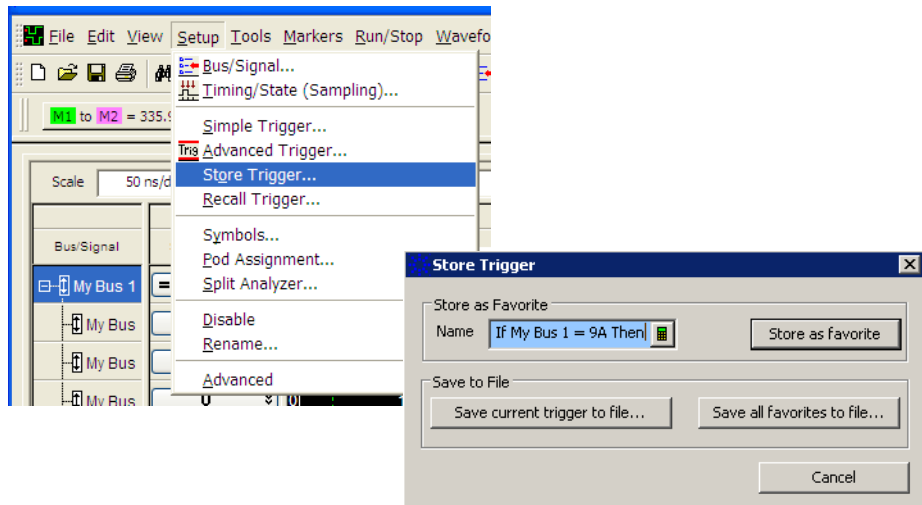
Tool Tips

Pause the cursor over a tool Icon and a “Tool Tip Window” will appear.



Trigger History

Save and recall trigger settings.



To power off the system

You can power off the logic analyzer using Windows Shutdown or a short press of the power button.

NOTE

When powering off the logic analyzer, wait until the fans stop turning (about 15 seconds) before turning the logic analyzer back on. This ensures that internal circuitry restarts in a known state.

Using the Windows Shutdown

On the logic analyzer desktop click **Start>Shut Down** or if you are running remote desktop, click **Start>Windows Security>Shut Down**. This:

- Closes all programs that are running.
- Writes all data to the disk.
- Turns off the power supply.
- If the system is unplugged while it is off and then plugged back in, the system will not power on until the power button is pressed.

Using a Short Press of the Power Button

Pressing the power button on the logic analyzer for a short time (less than 2 seconds):

- Closes all programs that are running.
- Writes all data to the disk.
- Turns off the power supply.

If the power button on the Remote Desktop is depressed for a short time (less than 2 seconds or so), a message on the logic analyzer screen (not on the remote desktop) will pop up asking if you really want to power down. Clicking the 'yes' button results in the above events. Clicking 'no' will prevent the shutdown. Not answering the dialog box (clicking neither "Yes" nor "No") will have no effect. Further short presses on the power button will have no effect.

Using a Long Press of the Power Button

CAUTION

Only use a long press of the power button when the logic analyzer is unresponsive to Windows Shutdown or a short press of the power button.

Pressing the power button for more than 4 seconds will power the system down abruptly:

- Programs that are running will not be shut down. Any data that has not been written to the disk will be lost.
- Turns off the power supply.
- If the system is unplugged while it is off and then plugged back in, the system will not power on until the power button is pressed

Unplugging the Power Cord or Power Loss

CAUTION

Only unplug the power cord when the logic analyzer is unresponsive to all other methods for powering off the system.

Unplugging power or a power loss is similar to the long press of the power button with one exception:

- When the system is plugged back in, it will power up and boot into Windows.

Specifications and Characteristics

The following electrical and operating characteristics are not specifications, but are typical operating characteristics for the Agilent 16850 series logic analyzers.

Electrical Characteristics

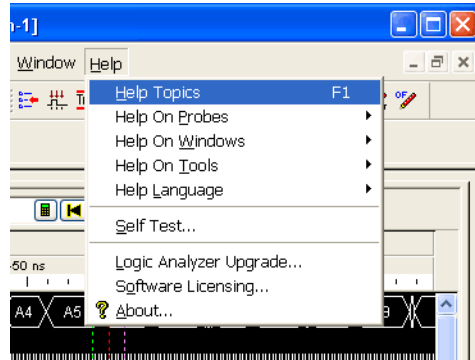
Power Requirements	16851A, 16852A, 16853A, and 16854A: 100-240 V \pm 10%, 50/60Hz, 400W Max CAT II (Line voltage in appliance and to wall outlet). Pollution degree 2.
---------------------------	---

Environmental Characteristics (Operating)

Temperature	Instrument: 5° C to 40° C (+41° F to +104° F).
Altitude	2000 m (6561 ft)
Humidity	Maximum 80% Relative humidity, non-condensing Intended for use in an indoor lab environment

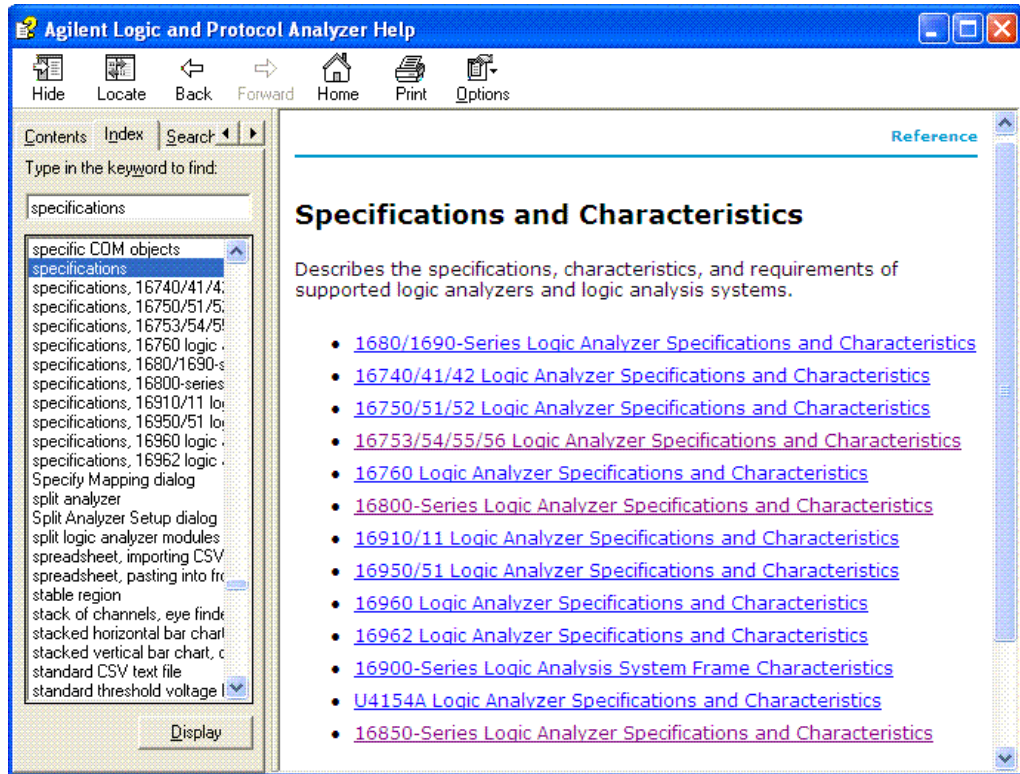
More specifications and characteristics for your instrument and measurement modules are in the on-line help. To find them go to:

1 Click Help>Help Topics.



2 Click Reference; then, click Specifications and Characteristics.

2 Getting Started with the Logic Analyzer





3 Updating the Logic Analyzer

Changing Network Settings 34

Changing Windows Firewall Settings 35

Software Installation and Upgrades 37



Changing Network Settings

To make network changes after the first-time power up:

The following steps are applicable for a logic analysis system with Windows 7 operating system:

- To change from a workgroup to a domain or vice versa, click **Computer** and select **Properties**. Click the **Change Settings** link in the **Computer name, domain and workgroup settings** section. Then select the **Computer Name** tab and click **Change**.
- To change network connection properties, click **Start>Control Panel>Network and Sharing Center**. Select the connection you want to change and then set the properties of this connection.

For more information on changing network settings, refer to the Windows 7 online help.

Changing Windows Firewall Settings

When 16850 series logic analyzers are shipped from the factory, the Windows Firewall is enabled and set up with the exceptions required by the logic analyzer.

To give other applications/ports access through the firewall

For example, you may need to change firewall settings in order to:

- Use NetOp to remotely control the logic analyzer.
- Use RealVNC to remotely control the logic analyzer.

To change firewall settings on Windows 7 to give other applications/ports access:

- 1** From the Windows Start menu, choose **Start > Control Panel > System and Security**.
- 2** In the Control Panel window, click **Windows Firewall**.
- 3** Click the **Allow a program or a feature through Windows firewall** link.
- 4** The list of allowed programs and features is displayed. If the required program or service is listed, check its box to enable it; otherwise, click **Allow another program...** to give unlisted programs permission to penetrate the firewall.

Refer to the application's documentation for more information on port numbers or other firewall setup information.

NOTE

Note that there are separate Windows Firewall profiles: Domain for when the computer has domain membership, and Standard for when the computer has workgroup membership. If you change the type of membership, any changes you made to the Windows Firewall settings will have to be made again.

To restore the logic analyzer firewall defaults

- 1 From the Windows Start menu, choose **Start > Control Panel > System Security**.
- 2 Click the **Windows Firewall** link.
- 3 Click **Restore defaults** in the left pane of the window.
- 4 Again click **Restore defaults**.
- 5 Uninstall and then reinstall the Logic Analyzer software from www.agilent.com/find/la-sw-download.

The logic analyzer firewall defaults enable the following exceptions:

- Agilent Logic Analysis Application program.
- Agilent Logic Analysis Service program.
- File and Printer Sharing.
- Microsoft RPC Endpoint Mapper TCP port.
- Remote Desktop service.
- Web Server (HTTP) port.

The logic analyzer firewall defaults also enable the following ICMP (Internet Control Message Protocol) settings:

- Allow incoming echo request.
- Allow outgoing destination unreachable.
- Allow outgoing time exceeded.

NOTE

Note that there are separate Windows Firewall profiles: Domain for when the computer has domain membership, and Standard for when the computer has workgroup membership. When you restore the logic analyzer firewall defaults, the defaults for both profiles are restored.

Software Installation and Upgrades

Agilent Logic and Protocol Analyzer Software

The Agilent 16850 Series logic analyzers are shipped with software already installed, including any licensed optional products that you may have purchased. The licensing process (described below) has been performed and the (*.lic) license file is in place.

To upgrade/reinstall the logic and protocol analyzer software or to install this software onto your PC for offline processing:

- Download the Logic and Protocol Analyzer software from <http://www.agilent.com/find/la-sw-download> and then install the software using the downloaded file. These systems are not shipped with an application CD. You need the Agilent Logic and Protocol Analyzer software version 5.70 or later for these systems.

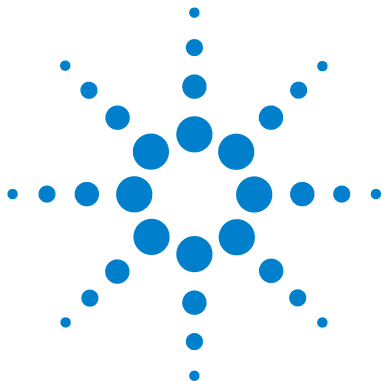
To be notified when software upgrades are available for downloading from the web, please sign up for e-mail notifications at:

www.agilent.com/find/emailupdates

Optional Products

If applicable, follow the instructions on the entitlement certificate that came with your purchase to enable the optional tool.

3 Updating the Logic Analyzer



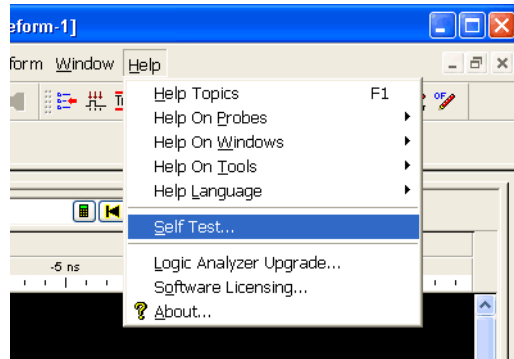
4 Solving Problems

Running Self-Tests	40
If the logic analyzer powers itself down	42
If the Power LEDs do not come on	42
If you get a registry error and the system won't boot	42
If there are network connection problems	43
If there are touch screen problems	44
Using the System Recovery Software	47
Contacting Agilent Service/Support	51

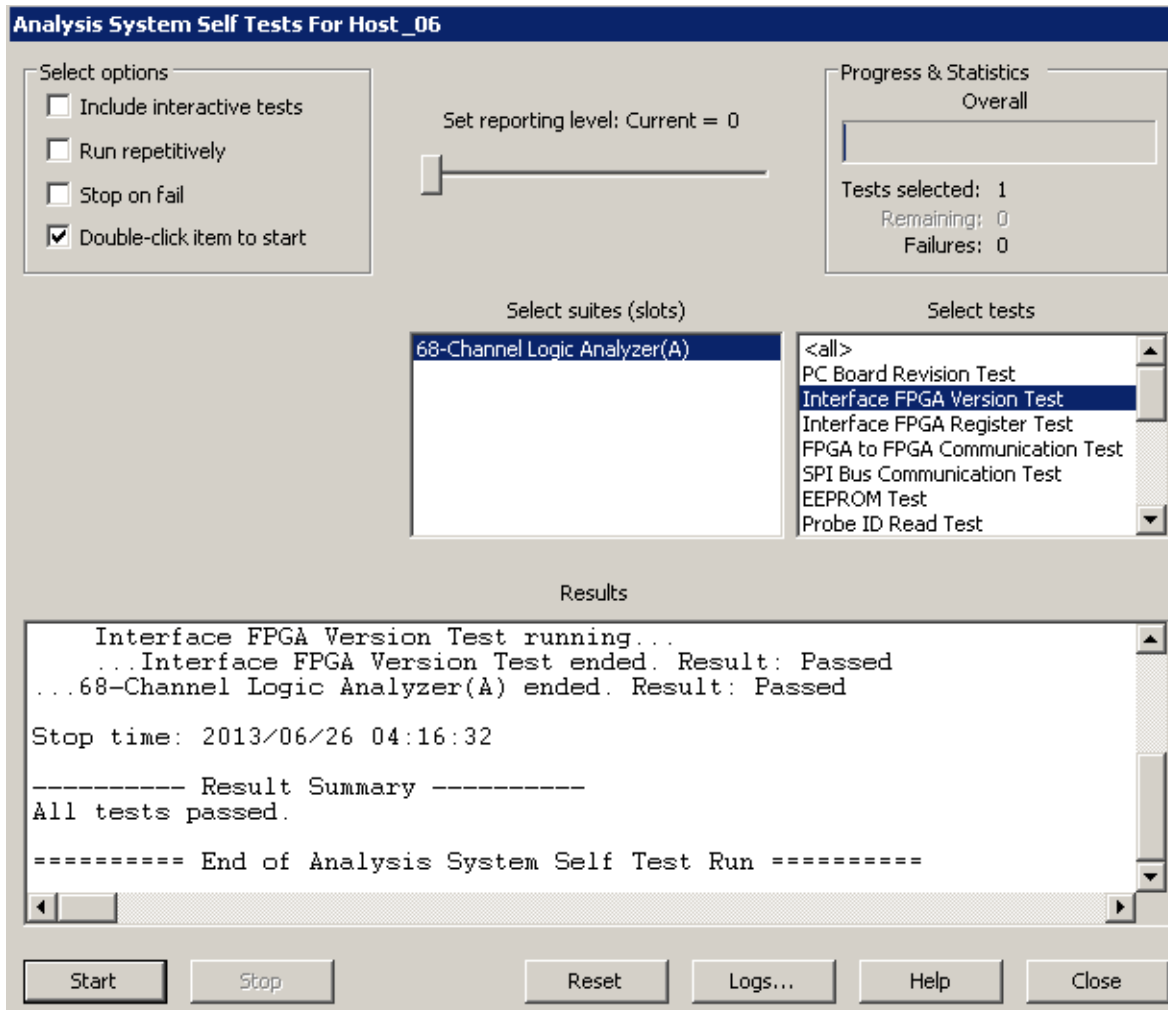


Running Self-Tests

- 1 In the Agilent Logic and Protocol Analyzer application, click **Help>Self Test**.



- 2 In the **Analysis System Self Test** dialog, double-click the test you want to run.



If the logic analyzer powers itself down

If the logic analyzer warns you it is powering down before it powers down, the dialog will describe the problem (such as a fan/overtemp problem). If the logic analyzer just powers down, it is likely a power supply problem.

If the Power LEDs do not come on

If the lights do not come on and if the system powers up momentarily when you plug it in, make sure the power button hasn't become jammed or stuck in the pushed in position.

If you get a registry error and the system won't boot

When powered off unexpectedly (for example, with a long press of the power button or a power loss), Windows may not flush all system information to disk and is vulnerable to problems. When you power back on you may get a "Registry Error" and the system won't boot. If this happens you will need to restore the system software using the recovery process. This process overwrites all the user data and restores the system back to the original condition in which it was shipped. Refer to the topic ["Using the System Recovery Software"](#) on page 47 to know more about this process.

It is best to keep regular backups of your data and use proper power down procedures. If you have data that was not backed up that you need to try to save:

- 1 Physically remove the disk drive.
- 2 Mount it under another Windows 7 system.
- 3 Move the data to the boot disk until you can restore the operating system.

If there are network connection problems

See the “Network Troubleshooting Guide” topic in the *Agilent Logic Analyzer* application’s online help. Briefly:

- The Windows Firewall must be set to allow access to the “Agilent Logic Analysis” service in order use remote connections (see [“To restore the logic analyzer firewall defaults”](#) on page 36).
- The Windows Firewall must be set to respond to the following ICMP (Internet Control Message Protocol) requests in order to use remote connections:
 - Allow incoming echo requests.
 - Allow outgoing destination unreachable.
 - Allow outgoing time exceeded.

(See [“To restore the logic analyzer firewall defaults”](#) on page 36.)

- The link activity light must be on; If these LEDs are not on, the LAN segment may be dead.
- If connecting two logic analysis systems directly together (that is, no hub or switch between them), make sure you are using a special cross-over cable.

If your IP address is in the same subnet as a working computer’s (use “ipconfig /all | more” to view IP addresses on machine in question), it is possible that your network administrators have denied access to any resources if the computer is not in the domain. In this case, you need to add the computer (logic analysis system) to the domain.

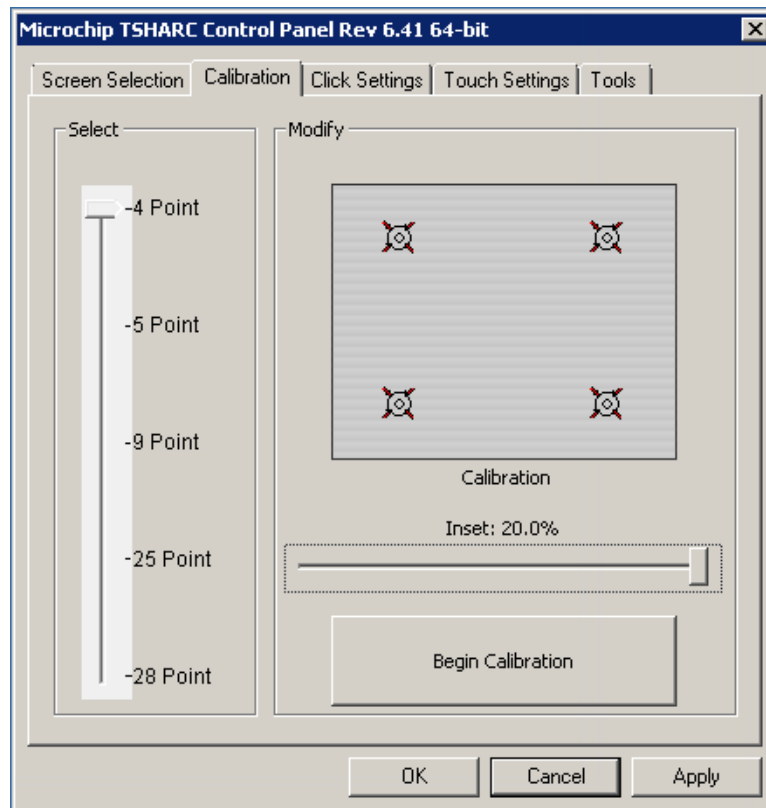
If there are touch screen problems

If you observe the following touch screen problems:

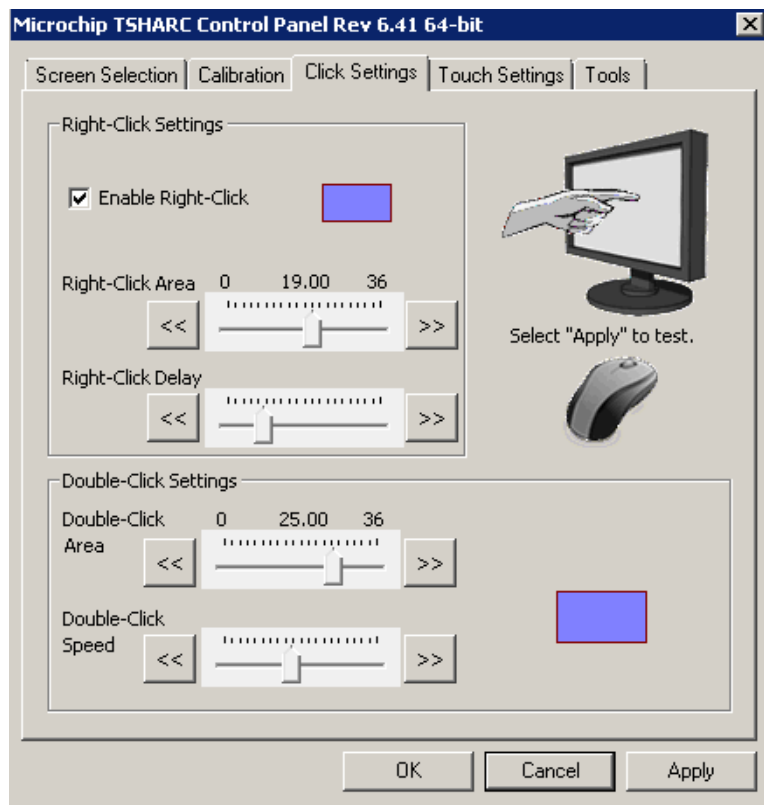
- If the Touch Off button on the instrument's front panel doesn't work.
- If there are problems with the right-click functionality on the touch screen.
- If the accuracy of touch locations is off.

You may be able to calibrate the touch screen to fix the problem by following the procedures described below for 16850 series of logic analyzers.

- 1 From the Windows Start menu, choose **Start>All Programs>Agilent Logic Analyzer>Utilities>Touch Screen>Touch Screen Calibration and Settings**.
- 2 In the Microchip TSHARC Control Panel dialog, select the **Calibration** tab.



- 3 By default, the number of points is set to 4 and the Inset is set at 20.0%.
- 4 Click **Begin Calibration**.
- 5 If you want to enable the right-click functionality on the touch screen, select the **Click Settings** tab and then select the **Enable Right-Click** checkbox. You can also set the area on the touch screen on which you want to enable the right-click functionality.



If calibrating the touch screen doesn't fix the problem, see [“Contacting Agilent Service/Support”](#) on page 51.

Using the System Recovery Software

Restoring your system software might be necessary for the following reasons:

- Hard drive failure.
- Virus in the system or unstable system.
- Intentional disk clean - for example if you are passing the system to another team or returning it to a rental company and you do not want any data left on it.

The 16850 series of Logic Analyzers have the Windows 7 operating system installed. These systems also have the Agilent Logic Analyzer software version 5.70 or later preinstalled. These systems do not have any recovery CD or DVD in their shipment.

If you need to restore the logic analysis system software, you run the recovery process on the hard drive of the system. This recovery process uses the hidden partition on the hard drive to restore the hard disk drive back to its original state in which it was shipped. When you run this process, the recovered hard disk drive contains:

- the Windows 7 operating system
- the version of the Logic and Protocol Analyzer software which was installed when the system was originally shipped and not the latest or upgraded version of the software that might be available at the time of system recovery.
- the license files of any licensed optional products that you had purchased with the Logic Analyzer and that were installed when the system was originally shipped.

NOTE

When you run the recovery process, the software licensing Host ID of your logic analyzer may change. If this happens, the restored license files will not work with the new host ID and you will need rehosted license files. To get these files, you can contact your nearest Agilent sales/service office. To locate a sales or service office, go to www.agilent.com/find/contactus.

CAUTION

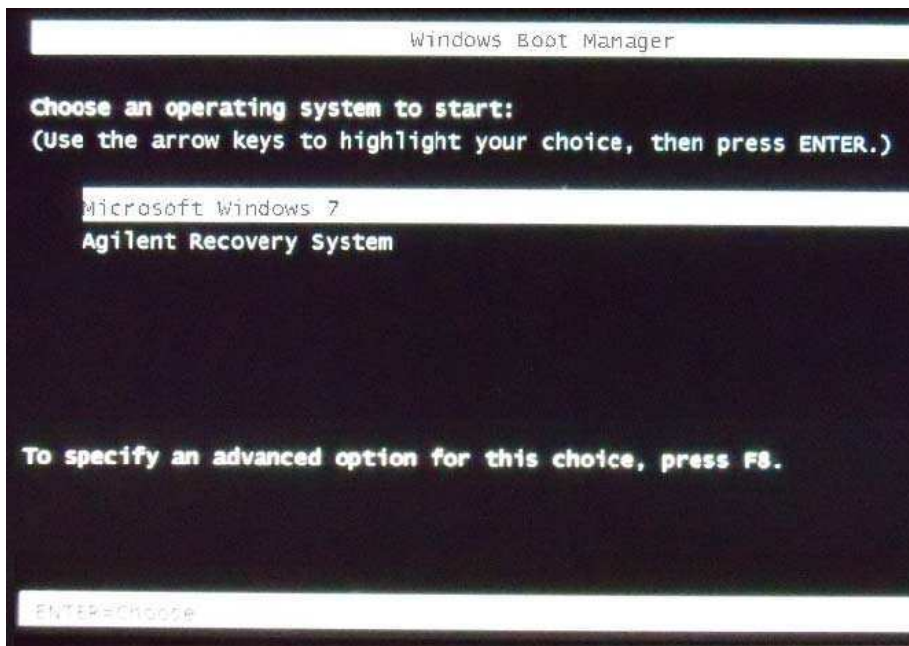
Running the recovery process reformats your logic analyzer's hard disk drive to the state in which it was originally shipped to you. All user data files and programs are overwritten when the recovery process runs. Therefore, save your data to a CD or to another machine before you start recovering the system software.

To run the recovery process

- 1 Shut down and then restart your Logic Analyzer.

While booting up, the Logic Analyzer displays the Windows Boot Manager screen. This screen provides you the following options:

- **Microsoft Windows 7** - This is the default selected option. This option starts the Logic Analyzer with the Windows 7 operating system. This is the normal startup of the system.
- **Agilent Recovery system** - You should select this option when you want to restore/repair your Logic Analyzer software by running the Agilent recovery process.

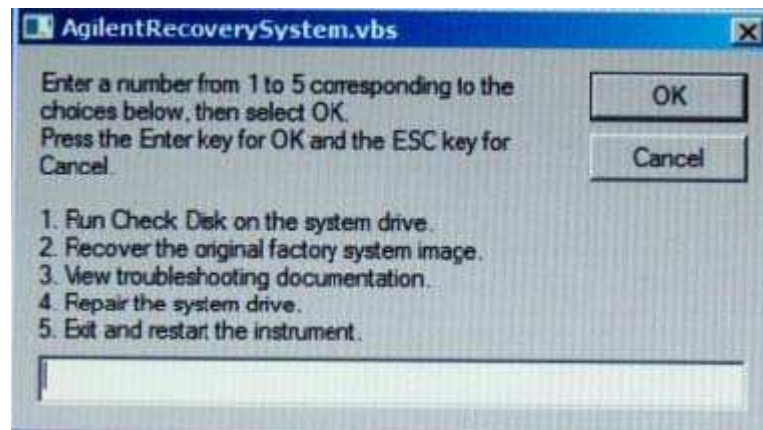


- 2 After a few seconds, Logic Analyzer automatically starts with the option selected in the Windows Boot Manager. Select the **Agilent Recovery**

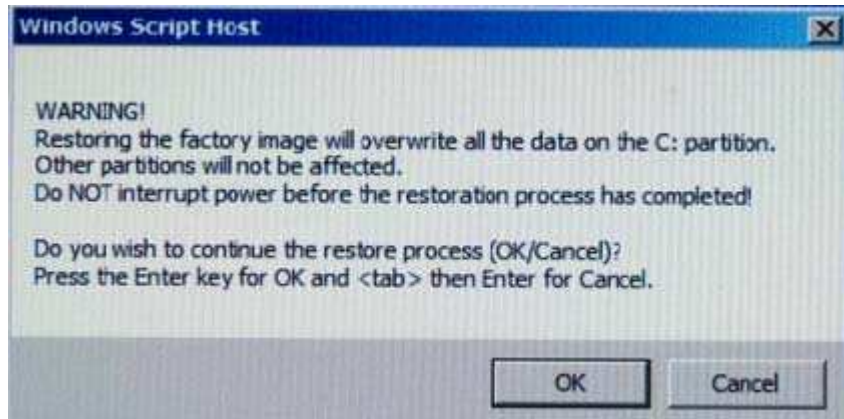
system option in the Windows Boot Manager screen using the arrow keys and then press Enter.

The recovery process starts preparing the system for recovery and displays the following screen with options to choose. You can enter:

- **1** to run Check Disk on the Logic Analyzer's hard disk drive. If the recovery process encounters any problems while running Check Disk, it reports these problems else it returns to the Agilent Recovery system prompt on completion of Check Disk.
- **2** to restore your Logic Analyzer software back to its original state in which it was shipped.
- **3** to view a document that provides information on the recovery process.
- **4** to repair the Logic Analysis system hard disk drive.
- **5** to exit the recovery process and restart the Logic Analyzer in the normal mode.

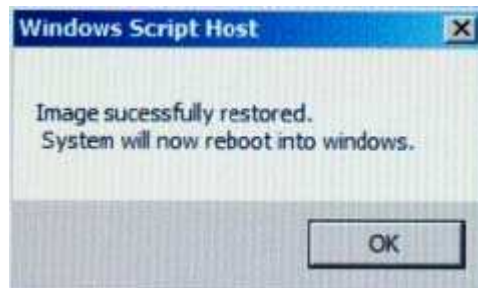


- 3** Select the second option in the above screen by entering **2** in the text box and clicking **OK**.
- 4** A warning message is displayed stating that the recovery process overwrites the data on C: drive. If you want to save your data to a CD or to another machine before you proceed further, then exit the recovery process and save your data. Else, click **OK** to proceed with the recovery process.



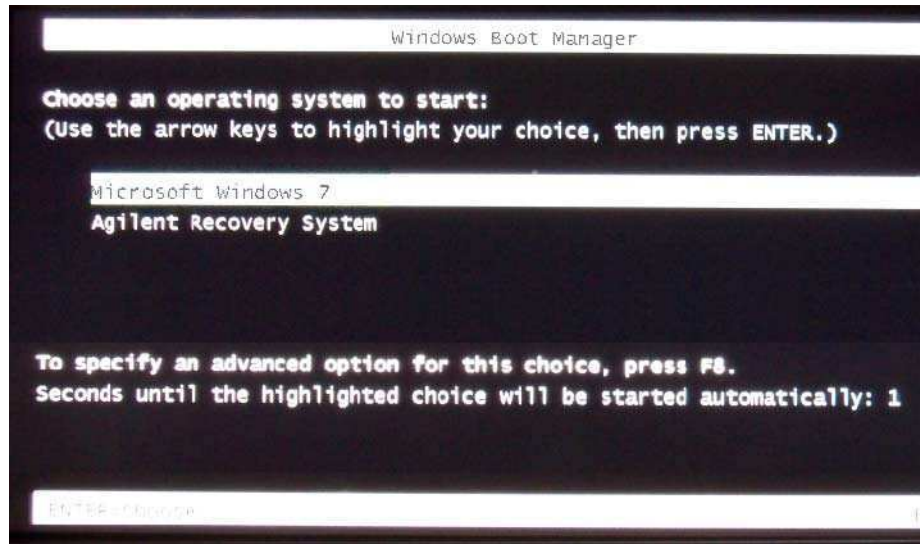
The recovery process starts.

If the recovery process is able to restore the system software successfully, then the following screen is displayed.



- 5 Click **OK** to proceed. You Logic Analysis system now reboots to Windows 7.
- 6 The Windows Boot Manager screen is displayed with **Microsoft Windows 7** as the default selection. The system automatically starts

with this default selection. Alternatively, you can press Enter to proceed with the default selection.

**NOTE**

There are situations when you are not able to run the recovery process, (for instance, when the hard disk drive of your system fails) or when running the recovery process does not recover your system software. In such situations, you can send your Logic Analysis system for hard disk repair/replacement to Agilent. Alternatively, you can contact your nearest Agilent sales/service office. To locate a sales or service office, go to www.agilent.com/find/contactus.

Contacting Agilent Service/Support

To locate a sales or service office near you, go to:
<http://www.agilent.com/find/contactus>



5 Safety Notices

Warnings	54
To clean the instrument	56
Safety Symbols	57

This apparatus has been designed and tested in accordance with IEC Publication 1010, Safety Requirements for Measuring Apparatus, and has been supplied in a safe condition. This is a Safety Class I instrument (provided with terminal for protective earthing). Before applying power, verify that the correct safety precautions are taken (see the following warnings). In addition, note the external markings on the instrument that are described under "Safety Symbols."



Warnings

- Before turning on the instrument, you must connect the protective earth terminal of the instrument to the protective conductor of the (mains) power cord. The mains plug shall only be inserted in a socket outlet provided with a protective earth contact. You must not negate the protective action by using an extension cord (power cable) without a protective conductor (grounding). Grounding one conductor of a two-conductor outlet is not sufficient protection.
- Only fuses with the required rated current, voltage, and specified type (normal blow, time delay, etc.) should be used. Do not use repaired fuses or short-circuited fuse holders. To do so could cause a shock or fire hazard.
- Do not use this instrument with a power cord other than the one provided by Agilent. Other power cords may not have appropriate ratings.
- If you energize this instrument by an auto transformer (for voltage reduction or mains isolation), the common terminal must be connected to the earth terminal of the power source.
- Whenever it is likely that the ground protection is impaired, you must make the instrument inoperative and secure it against any unintended operation.
- Service instructions are for trained service personnel. To avoid dangerous electric shock, do not perform any service unless qualified to do so. Do not attempt internal service or adjustment unless another person, capable of rendering first aid and resuscitation, is present.
- Do not install substitute parts or perform any unauthorized modification to the instrument.
- Capacitors inside the instrument may retain a charge even if the instrument is disconnected from its source of supply.
- Do not operate the instrument in the presence of flammable gasses or fumes. Operation of any electrical instrument in such an environment constitutes a definite safety hazard.
- Do not use the instrument in a manner not specified by the manufacturer.

- To optimize your comfort and productivity, it is important that you set up your work area correctly and use your equipment properly. Refer to http://www.agilent.com/quality/Working_In_Comfort.pdf for set-up and use recommendations
- Position equipment so that it is not difficult to disconnect the power cord.

To clean the instrument

If the instrument requires cleaning:

- 1** Remove power from the instrument.
- 2** Clean the external surfaces of the instrument with a soft cloth dampened with water.
- 3** Make sure that the instrument is completely dry before reconnecting it to a power source.

Safety Symbols



Instruction manual symbol: the product is marked with this symbol when it is necessary for you to refer to the instruction manual in order to protect against damage to the product.



Indicates hazardous voltages and potential for electrical shock.



Earth terminal symbol: Used to indicate a circuit common connected to grounded chassis.



N10149

The C-tick mark is a registered trademark of the Spectrum Management Agency of Australia. This signifies compliance with the Australia EMC Framework regulations under the terms of the Radio Communication Act of 1992.



ICES/NMB-001 CE compliance marking to the EU Safety and EMC Directives.

ISM GRP-1A classification according to the international EMC standard.

ICES/NMB-001 compliance marking to the Canadian EMC standard.



1B16850SERIES

KC certification mark to demonstrate compliance with the South Korean EMC requirements.

South Korean Class A EMC declaration:

This equipment is Class A suitable for professional use and is for use in electromagnetic environments outside of the home.



CSA is the Canadian certification mark to demonstrate compliance with the Safety requirements.



Notice for the European Community: This product complies with the WEEE Directive (2002/96/EC) marking requirements. The affixed label indicates that you must not discard this electrical/electronic product in domestic household waste. Product Category: With reference to the equipment types in the WEEE Directive Annex I, this product is classed as a “Monitoring and Control instrumentation” product.

Do not dispose in domestic household waste. To return unwanted products, contact your local Agilent office or get more information from www.agilent.com/environment/product.

Index

A

- administrator, 13
- administrator account, 17
- Agilent web
 - service/support, 51
- antivirus, 17

C

- caution
 - electrostatic discharge, 29
- CD
 - product software, 37
- change network settings, 34
- characteristics, 31
- Check Disk, 49
- contact information, 51

D

- debugging network, 43
- disk
 - clean/reformat, 47
- domain, 13

E

- electrostatic discharge, 29

F

- firewall, 17
 - changing settings, 17, 35

G

- grounding, 29

H

- hard drive, 47

I

- ICMP settings, 36
- install
 - software, 37
- inverse assemblers, 37

L

- LEDs, 42

N

- network
 - adding logic analyzer, 13
 - connection decision, 13
 - debugging, 43
- network connection problems, 43
- network settings, 34

O

- optional tools, 37

P

- power
 - turning off, 28

R

- recovery procedures, 47
- recovery process, 47
- registry error, 42
- restoring system, 47
- running self tests, 40

S

- self tests, 40
- service
 - contacting Agilent, 51
 - ground modules, 29
- shut down system, 28
- software
 - add-in, 37
 - installation, 13, 17, 37
 - updating, 37
- specifications, 31
- standalone operation, 13
- system
 - recovery, 47
 - software, 37

T

- tools, optional, 37
- touchscreen problems, 44

U

- update software, 37

V

- virus software, 17

W

- windows
 - power problems, 42
 - updates, 17
- Windows Boot Manager, 48
- Windows Firewall settings
 - changing, 35

Index

workgroup, 13
 changing, 17

www.agilent.com

© Agilent Technologies, Inc. 2013

Printed in Malaysia
First edition, August 2013



Agilent Technologies

www.valuetronics.com