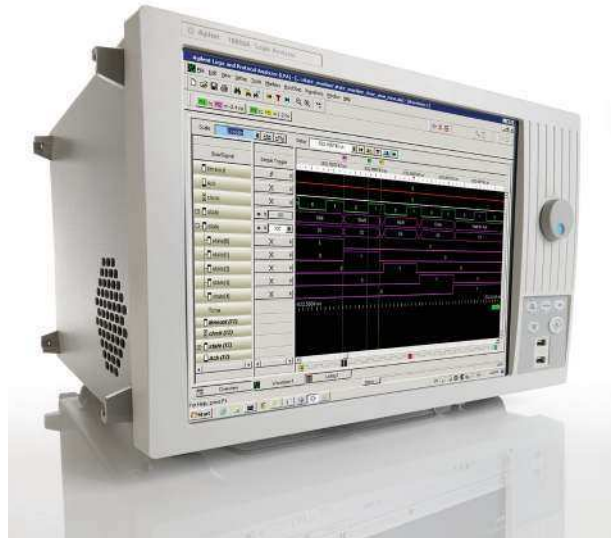
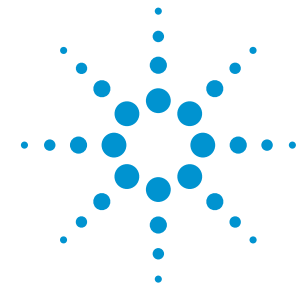


Agilent 16850 Series Portable Logic Analyzers

The industry's fastest timing capture with deep memory for fast debug



Why is the 16850 Series such a versatile tool for general purpose debug and validation challenges?

2.5 GHz timing capture with up to 128 M sample memory

- Find elusive timing problems quickly, even far from the trigger point

Up to 1.4 GHz trigger sequencer

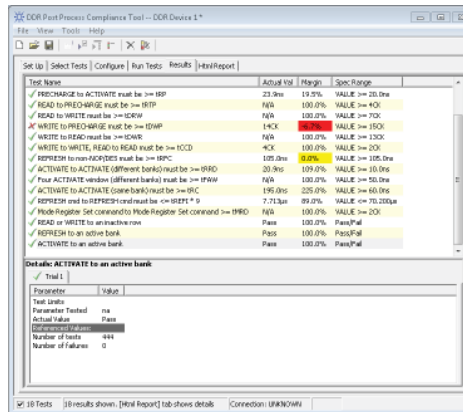
- For state and timing capture to track your high-speed designs

Single-ended and differential probing

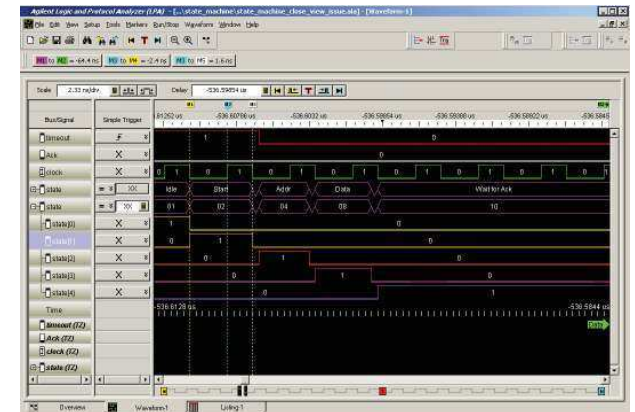
- Provide the widest range of supported technologies

Key specifications

Timing speed with deep memory (half/full ch)	5 GHz (200 ps)/2.5 GHz (400 ps) up to 128 M samples depth
Channels	34, 68, 102 and 136
Trigger sequencer	1.4 GHz (timing mode standard); 700 MHz state mode standard; 1.4 GHz state mode with option 700)
State data rate	700 Mbps standard; 1400 Mbps upgrade
Timing Zoom	12.5 GHz (80 ps) with 256 k samples depth
Memory depth	2 M samples standard; 4 M, 8 M, 16 M, 32 M, 64 M, and 128 M options
Probing options	Single-ended and differential
Memory measurements	Configurations for addr/cmd state capture, decode, conformance test up to DDR2/3 1333



The 16850 Series offers not only memory decode on addr/cmd for up to DDR2/3 1333, but also allows for conformance testing as shown.



Often it is easy to trigger on a symptom of a problem, like an error flag. In this example, one can look far back in time before the trigger with 2.5 GHz (400 ps) timing to see the timing and functional details of the root cause of failure.



Product Fact Sheet

Agilent 16850 Series Portable Logic Analyzers

1 Choose the channel count

Model	16851A	16852A	16853A	16854A
Channels	34	68	102	136

2 Choose the state speed

Standard	350 MHz state clock; 700 Mbps data rate
16851A-700	700 MHz state clock; 1.4 Gbps data rate
16852A-700	700 MHz state clock; 1.4 Gbps data rate
16853A-700	700 MHz state clock; 1.4 Gbps data rate
16854A-700	700 MHz state clock; 1.4 Gbps data rate

* For all after-purchase upgrades use model numbers 16851AU, 16852AU, 16853AU and 16854AU to order memory depth or state speed upgrades.

3 Choose the memory depth

Standard	2 M
16851A-004	4 M for 34-ch models
16851A-008	8 M for 34-ch models
16851A-016	16 M for 34-ch models
16851A-032	32 M for 34-ch models
16851A-064	64 M for 34-ch models
16851A-128	128 M for 34-ch models
16852A-004	4 M for 68-ch models
16852A-008	8 M for 68-ch models
16852A-016	16 M for 68-ch models
16852A-032	32 M for 68-ch models
16852A-064	64 M for 68-ch models
16852A-128	128 M for 68-ch models
16853A-004	4 M for 102-ch models
16853A-008	8 M for 102-ch models
16853A-016	16 M for 102-ch models
16853A-032	32 M for 102-ch models
16853A-064	64 M for 102-ch models
16853A-128	128 M for 102-ch models
16854A-004	4 M for 136-ch models
16854A-008	8 M for 136-ch models
16854A-016	16 M for 136-ch models
16854A-032	32 M for 136-ch models
16854A-064	64 M for 136-ch models
16854A-128	128 M for 136-ch models

Logic analyzer probes are ordered separately. Please specify probes when ordering to ensure the correct connection between your logic analyzer and the device under test.

16850 Series direct connect logic analyzer probes

General-purpose flying lead

U4203A	34-ch single-ended data, differential clock, direct connect
E5381A	17-ch differential probe for 90 pin LA pod ^{1,2}
E5382A	17-ch single-ended probe for 90 pin LA pod ^{1,2}

Connectorless probes

E5387A	Soft Touch Classic Series: 17-ch differential for 90 pin LA pod ^{1,2}
E5398A	Half-Size Soft Touch: 17-ch single-ended for 90 pin LA pod ^{1,2}
E5390A	Soft Touch Classic Series: 34-ch single-ended for 90 pin LA pod ^{1,3}
E5405A	Soft Touch Pro Series: 17-ch differential for 90 pin LA pod ^{1,2}
E5406A	Soft Touch Pro Series: 34-ch single-ended for 90 pin LA pod ^{1,3}

Connector probes

U4205A	34-ch single-ended data and clock, direct connect
E5378A	Samtec: 34-ch single-ended probe for 90 pin LA pod ^{1,3}
E5379A	Samtec: 17-ch differential probe for 90 pin LA pod ^{1,2}
E5380A	Mictor: 34-ch single-ended probe ^{1,3}

1. Logic analyzer probes are ordered separately. Please specify probes when ordering to ensure the correct connection between your logic analyzer and the device under test.
2. 17 channel probes require one of two 90 pin pods provided on the U4201A logic analyzer direct connect cable.
3. 34 channel probes require both 90 pin pods provided on the U4201A logic analyzer cable.

Additional 16850 Series options

Agilent product or option number	Description	Ordering information
E5864A	Additional external hard drive	Order E5864A

Recommended service options

Additional two years of Return-to-Agilent warranty
 Additional two years of Return-to-Agilent calibrations
 For more information go to www.agilent.com/find/removealldoubt



Three-Year Warranty

www.agilent.com/find/ThreeYearWarranty

Agilent's combination of product reliability and three-year warranty coverage is another way we help you achieve your business goals: increased confidence in uptime, reduced cost of ownership and greater convenience.

www.agilent.com/find/16850-Series

Technical data, availability, and pricing subject to change without notice.
 © Agilent Technologies, Inc. 2013. Printed in USA, August 10, 2013
 5991-2815EN



Agilent Technologies